



**Northumbria  
University**  
NEWCASTLE

# SAMPLE OPEN DAY PROGRAMME

## CITY CAMPUS

**PLEASE NOTE:** *This sample Open Day Programme provides an overview of what to expect. Details are incomplete as they may be subject to change, but you will receive a full programme with specific session times and locations closer to the event.*

**#NUOpenDay**



THE  TIMES  
THE SUNDAY TIMES

**GOOD UNIVERSITY  
GUIDE 2025**

**MODERN UNIVERSITY  
OF THE YEAR**

# Welcome!

Welcome to Northumbria University, we are delighted that you are considering studying here and are pleased to welcome you on campus for our Open Day.

Open Days are a great opportunity to find out more about why we are a research-intensive university that unlocks potential for all, changing lives regionally, nationally and internationally. And you can find out why we are the winner of the Modern University of the Year title in the latest Good University Guide.

Visit our outstanding facilities and discover the range of support services we offer our students, as well as enjoying the vibrant student community that we have here in Newcastle. Be sure to talk to our staff and students and ask lots of questions while you are here.

We hope you enjoy your day!

**Northumbria University  
Open Day Team**

[ug.events@northumbria.ac.uk](mailto:ug.events@northumbria.ac.uk)

*We recommend that you arrive on campus at least 30 minutes before your first talk or activity to give yourself time to check in at one of our Registration points.*

*Please note that information, advice and guidance received at the Open Day is accurate as of today, but can be subject to change as we review our courses to ensure that they are up to date and relevant and that you are receiving the best possible educational experience. Our website is the most up to date place to review our information. In the event of changes the University will consult and inform students in good time and will take reasonable steps to minimise disruption.*



# Which Campus?

## Check Which Campus to Attend

Northumbria University has **two** campuses in Newcastle – City Campus and Coach Lane Campus. Please make sure you check which Campus the subjects that you are interested in are held at.

If the subjects that you are interested in are at **City Campus**, you are on the correct side of the Programme for your Subject Sessions. If you are interested in any of the courses in the list to the right, these are at **Coach Lane Campus**, so please turn the Programme over for further information on your Subject Sessions, General Sessions and Tours.

- Childhood and Early Years Studies
- Guidance and Counselling
- Health and Social Care
- Midwifery
- Nursing
- Occupational Therapy
- Operating Department Practice
- Physiotherapy
- Primary Education
- Social Work

There is lots on offer at both campuses so you won't miss out. There is also a **free shuttle bus** between City Campus and Coach Lane Campus running on the day if you would like to see both campuses (see page 7).

## Contents

Welcome	2
Which Campus?	3
How to Make the Most of Your Day	4
Getting Here	6
Shuttle Buses	7
City Campus Map	8
Accommodation Map	9
City Central Exhibition Guide	10
General Sessions and Tours	11
Grab a Bite to Eat	13
Day Planner	14
Find Out More	15
Coach Lane Campus Programme	16–21

# How to Make the Most of Your Day

## Check-in \*

Register and collect your Open Day programme on arrival, then take a look around the Central Exhibition. As there is so much to see we recommend that you arrive early, Registration and the Central Exhibition are open from 09.00.

At **City Campus**, Registration is in Sport Central - postcode NE1 8SG / what3words: canny.slowly.exit

At **Coach Lane Campus**, Registration is on Campus West - postcode NE7 7XA / what3words: lists.rents.raced

*\*You can register at **either** our City or Coach Lane Campus – check which is most relevant to the subjects you are interested in.*

## Plan Your Day

Use this guide to decide what you want to see and plan your day to maximise your time with us.

## Welcome Talk

Find out why you should choose to study at Northumbria at our University Executive Welcome.

## Subject Sessions

Discover more information about the courses you are interested in and talk to academics and current students. Staff and students are also available on the Department stands in the Central Exhibition.

## Accommodation

Some of our student accommodation is open and available for you to view on the day, or speak to our Accommodation Team in the Central Exhibition to find out more.

## Chat to Students

Talk to our Event Reps about what it is like to be a current student living and studying here. They are on hand to guide you around the Campus and answer your questions; they are in black t-shirts with **Ask Me** on the front.





### **Take a Break**

Have a bite to eat in one of our catering outlets, or there is complimentary tea and coffee available in the Central Exhibition at City Campus, or Reception at Coach Lane Campus.

### **Facilities**

Check out our fantastic facilities with tours of the Campus, Clinical Skills Centre, Library, Sport Central and Students' Union.

### **Support Services**

Speak to our specialist staff who offer a range of support services to our students, including student funding and disability support, all situated in the Central Exhibition.

### **More than a Degree**

See what activities you can take part in outside of your studies, including volunteering, placements, part-time work, clubs and societies.

### **Advice**

Come along to our General Sessions for advice on topics from writing your Personal Statement to Student Finance.

### **See the City**

City Campus is a 5-minute walk from the city centre, take a walk in to town after you have attended the Open Day.

### **The Fun Zone**

Visit The Fun Zone and try your luck with our carnival games to win prizes.

### **Emergencies**

For any incidents or injuries whilst on campus, please contact the Ask For Help or Security stands in the Central Exhibition or call 0191 227 3999.



# Getting Here



Newcastle has excellent transport links from across the UK and globally, by road, rail, air and sea. Once in Newcastle we have an extensive public transport system, which includes the Metro, Tyneside's urban light railway system.

## Travelling by Road

The A1 passes through Newcastle, linking the area to London and the South, Scotland and other major routes across the country. The A69 heads west to Carlisle, the Lake District and, via the M6, Wales and the West of England.

City Campus is situated in the heart of Newcastle city centre, follow the signs for City Centre and A167. When you arrive on campus, Registration is in Sport Central - postcode NE1 8SG / what3words: canny.slowly.exit

Coach Lane Campus is approximately 3.5 miles from the city centre via the A1058 Coast Road and Red Hall Drive. When you arrive on campus, Registration is on Campus West - postcode NE7 7XA / what3words: lists.rents.raced

## Parking

City Campus – on Saturday we have access to the main University car park free of charge at **City Campus East Car Park** - postcode NE1 2SU / what3words: builds.beyond.either

We also have a number of spaces available in our smaller car parks free of charge:

**Camden Street** – NE2 1XE /

what3words: double.brands.jolly

**Day Street** – NE1 8SU / what3words: ally.fields.leave

**Sport Central** – NE1 8QD /

what3words: mass.visits.people

Coach Lane Campus – on Saturday we have access to the car park at **Coach Lane Campus East** free of charge. The nearest post code is NE7 7TR (this will guide you to a nearby housing estate,

so as you get close please follow the signs to the University) / what3words: fine.truly.healers

Alternative City Centre Parking at Pay & Display car parks include:

- **Civic Centre** - NE2 1DF
- **College Street** - NE1 8JG
- **John Dobson Street** - NE1 8HL
- **Manors** - NE1 2LA
- **MEA House** - NE1 8SX

Alternative Coach Lane Parking is at **Four Lane Ends Metro**, postcode NE7 7TG, where there is a large car park that is approx. 10-minutes walk to the Campus.

During the Open Day a free shuttle bus will also run for visitors between City Campus and Coach Lane Campus.

### Travelling by Rail

Newcastle Central Station is on a number of main rail lines, including LNER, TransPennine, Cross Country and Northern. To reach City Campus by foot will take approximately 15-minutes, alternatively we have a bus between 08.30 and 11.00 from Central Station to City Campus, or you can take the Metro to Haymarket. To reach Coach Lane Campus take the Metro to Four Lane Ends which is then a 10-minute walk to the Campus.




### Travelling by Air

Newcastle International Airport is 7 miles from the city centre, and connected via the Metro from Airport to Haymarket for City Campus, or to Four Lane Ends (changing at South Gosforth) for Coach Lane Campus.

## Shuttle Buses

You can travel from City Campus to Coach Lane Campus free of charge on our shuttle bus on the day.

Buses depart from City Campus East (see  on the map on page 8) between 08.30 and 15.30 every 20-30 minutes.

The last bus back to City Campus East from Coach Lane Campus East leaves at 15.30.

Please allow up to 25 minutes for your journey.

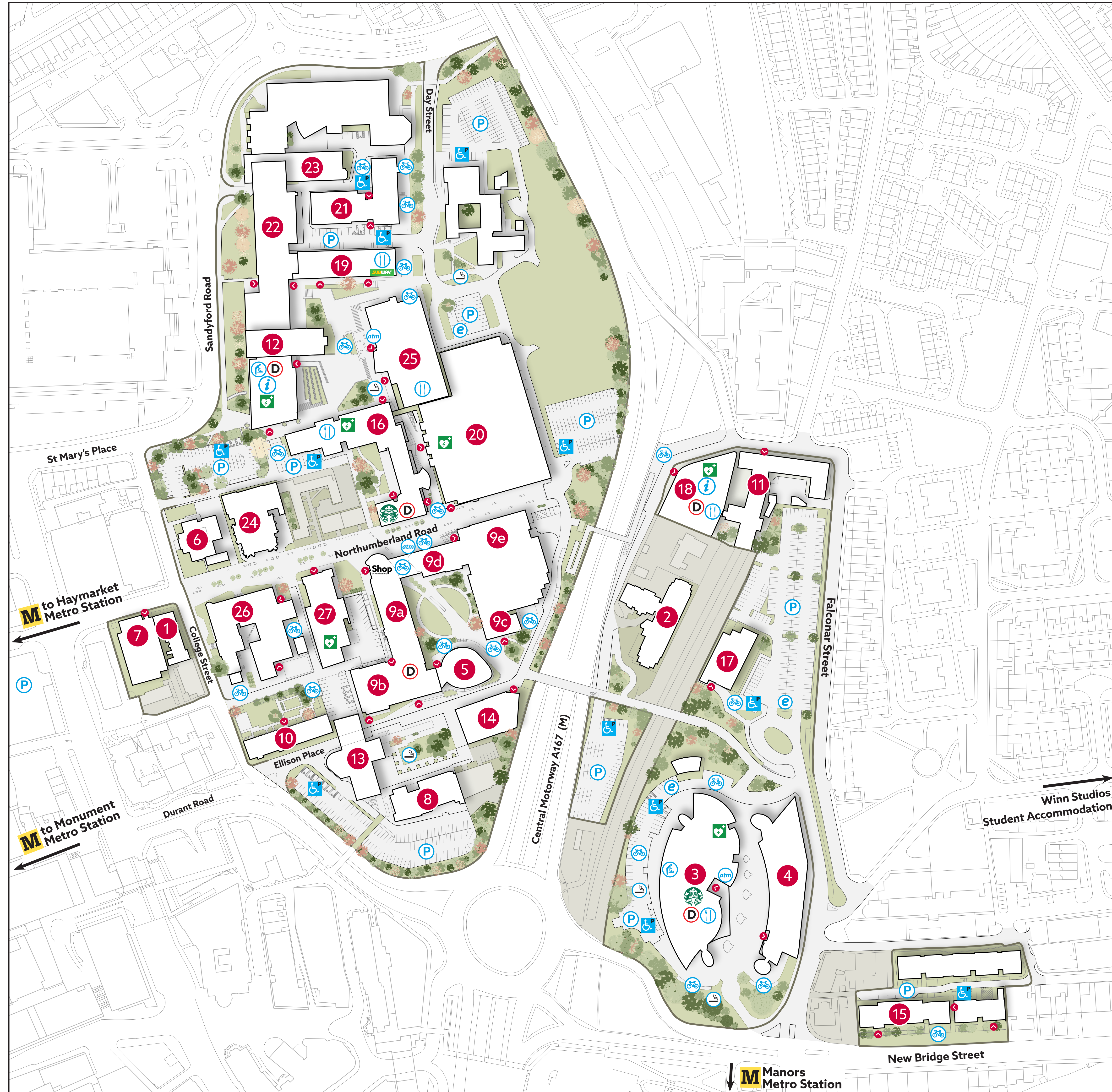




**Northumbria  
University**  
NEWCASTLE

# City Campus

- 1 Burt Hall (BUR)
- 2 Camden Court (CCT)
- 3 City Campus East 1 (CCE1)  
CCE Hub & Starbucks Coffee Shop
- 4 City Campus East 2 (CCE2)
- 5 CIS Building (CIS)
- 6 College House (CH)
- 7 Drill Hall (DH)
- 8 Durant Hall (DUR)
- 9a Ellison Building A Block (ELA)  
Shop at Northumbria Merchandise
- 9b Ellison Building B Block (ELB)  
Equipment Loans Centre
- 9c Ellison Building C Block (ELC)
- 9d Ellison Building D Block (ELD)  
The Zone
- 9e Ellison Building E Block (ELE)
- 10 Ellison Terrace
- 11 Glenamara House
- 12 Library (LIB)  
Student Central  
Ask4Help  
Spiritual Commons  
Student Support and Wellbeing  
The IT Place
- 13 MEA House (MEA)
- 14 North East Space Skills and Technology Centre (NST)
- 15 Newbridge (NBR)  
The Business Clinic  
The Incubator  
Newbridge Student Accommodation
- 16 Northumberland Building (NBD)  
Café Central – Starbucks  
University Library Digital Commons
- 17 Northumbria University Nursery (NUR)
- 18 Pandon Building (PAN)  
Facilities & Estates  
Pandon Café
- 19 Sandyford Building (SAN)  
The Corner Café – Subway  
Business Hub  
The University Gallery  
Gallery North  
The University Collection
- 20 Sport Central (SPCEN)
- 21 Squires Annexe (SQX)
- 22 Squires Building (SQB)  
Technical Resource Centre
- 23 Squires Workshops (SQW)
- 24 St James's United Reformed Church (SJC)
- 25 Students' Union (STU)  
The Venue
- 26 Sutherland Building (SUB)
- 27 Trinity Building (TRY)  
Security, Mail and Transport

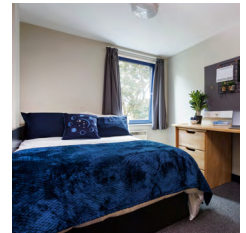
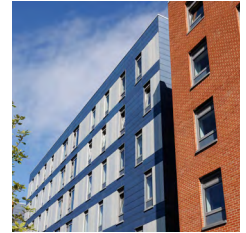
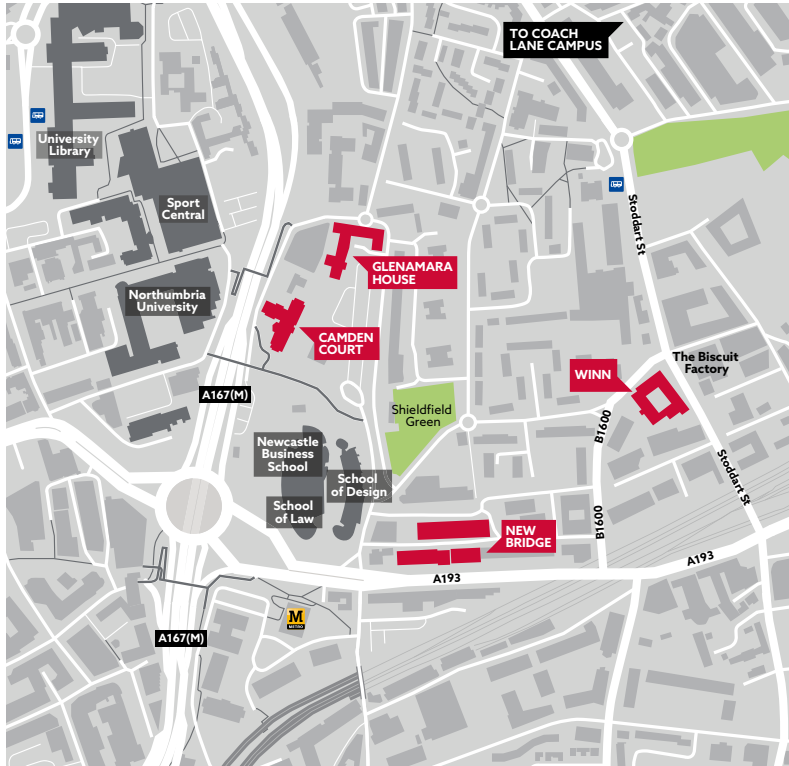


## MAP KEY

- Reception/Information
- Parking
- Cycle Parking
- Electric Vehicle Charge Point
- Food and Drink
- ATM Machine
- Shop** Branded Merchandise  
at Northumbria
- Automated External Defibrillator
- Accessible Building Entrance
- Accessible Parking
- Parenting Room
- Smoking Area
- Uni Food App Delivery/  
Collection Points
- Starbucks
- Subway

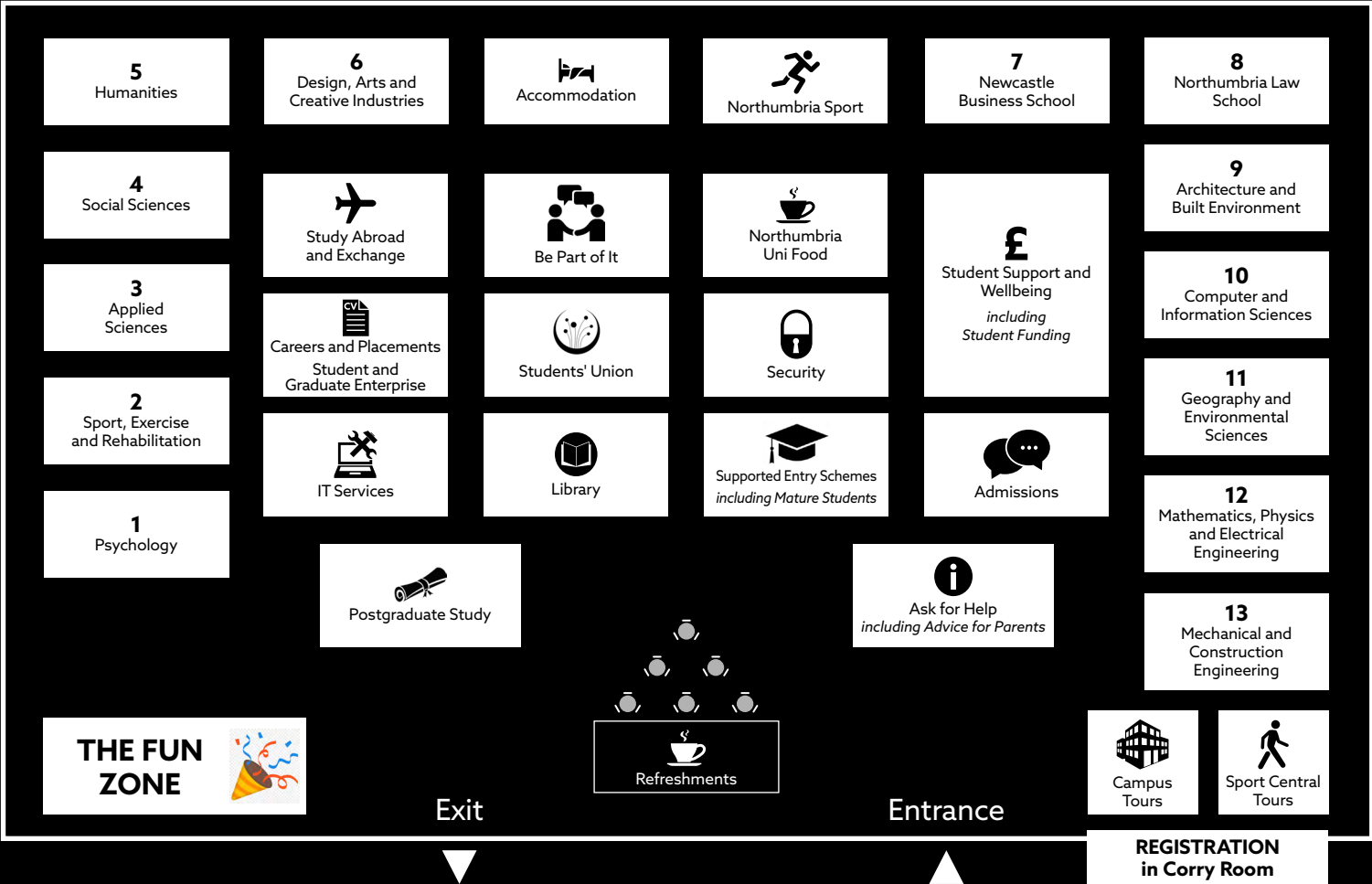


# Accommodation



# City Campus Exhibition Guide

Please note this is a sample and subject to change



# General Sessions and Tours – City Campus

## City Campus Building Key

EL Ellison Building   SB Sutherland Building   SC Sport Central   SU Students' Union

Session	Description	Time	Venue	Map Reference
<b>Central Exhibition</b>	Find out more about our fantastic courses, facilities, accommodation and support services. Staff from across the University and current students will be available to tell you everything you need to know.	TBC	TBC	TBC
<b>The Fun Zone</b>	Visit The Fun Zone and try your luck with our carnival games to win prizes.	TBC	TBC	TBC
<b>University Executive Welcome</b>	A welcome to Northumbria University, explaining who we are and why you should choose to study at Northumbria.	TBC	TBC	TBC
<b>Funding Your Undergraduate Study</b>	An opportunity to find out information about applying for UK* undergraduate student funding, maximising your income, as well as guidance on budgeting. <i>*Non-UK students can get advice at the Student Support and Wellbeing Stand in the Central Exhibition.</i>	TBC	TBC	TBC
<b>Persuasive Personal Statement and your UCAS Journey</b>	A detailed look at the UCAS application process and writing of a personal statement, including real examples sent to Northumbria.	TBC	TBC	TBC
<b>Northumbria Sport</b>	Find out about our sport scholarships, athlete support services, facilities and performance sport programmes.	TBC	TBC	TBC
<b>Campus Tours</b>	A student-led walking tour of the campus. (allow 45 minutes)	TBC	TBC	TBC
<b>Self-guided Library Tours</b>	Visitors are welcome to look around the Library at their leisure, with staff on hand to answer any questions.	TBC	TBC	TBC
<b>Sport Central Tours</b>	A student-led walking tour of the award winning facilities in Sport Central.	TBC	TBC	TBC
<b>Students' Union Tours</b>	Visit Northumbria University Students' Union and take a tour of the facilities.	TBC	TBC	TBC
<b>Accommodation Open Houses</b>	See the map for locations, call in at your leisure or visit the Accommodation stand in the Central Exhibition for a student guide.	TBC	TBC	TBC





**Northumbria  
University**  
NEWCASTLE

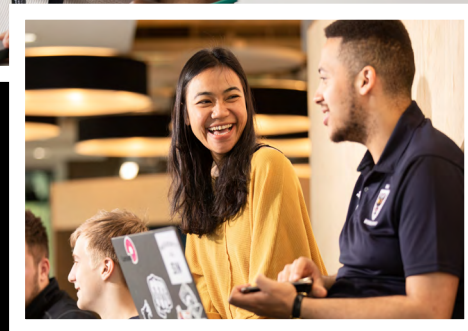
# EXPLORE OUR VIRTUAL EVENTS.

We know you will have lots of questions about studying at Northumbria, and you may not get time to ask them all today. Which is why we have developed a range of virtual events that allow you to discover more about the things that matter to you, from the comfort of your own home.



**BOOK A VIRTUAL EVENT**

[northumbria.ac.uk/experiencenu](https://northumbria.ac.uk/experiencenu)











# Grab a Bite to Eat

There are refreshments available in our Central Exhibition at City Campus or in Reception at Coach Lane Campus. Or you can get a real taste for Northumbria life at one of our on-campus eateries. Check out our catering outlets in the list opposite for food, drinks and snacks.

## City Campus

	<b>CCE1 Starbucks</b>	<b>5</b>	08.00 – 15.00
	<b>Café Central</b>	<b>16</b>	08.00 – 15.00
	<b>Habita</b>	<b>26</b>	11.00 – 19.00 (bar and food)
	<b>Shop Central</b>	<b>16</b>	10.00 – 16.00
	<b>Subway</b>	<b>19</b>	10.00 – 15.00

## Coach Lane Campus

	<b>Foragers Pod</b>	<b>15</b>	08.00 – 15.00
	<b>Foragers Restaurant</b>	<b>15</b>	11.30 – 14.30

# Day Planner

There is a lot to see throughout the day and we want you to get the most from your visit. This planner will help you to structure your day so that you can plan effectively and maximise your time with us.

Time	Activity	Location	Notes
On arrival	Registration	Sport Central or Coach Lane Campus West	
09.00			
09.30			
10.00			
10.30			
11.00			
11.30			
12.00			
12.30			
13.00			
13.30			
14.00			
14.30			
15.00	End of Open Day – Thank you for visiting us		

## Next Steps

Should you decide to apply to Northumbria University and we make you an offer, you will be invited to attend one of our NU Experience Days, where you will get to look around again and talk to staff and students in more detail about the course and life at Northumbria.

## Find Out More

For the most up to date information about Northumbria University visit our website.

<b>Accommodation</b>	<a href="http://www.northumbria.ac.uk/accommodation">www.northumbria.ac.uk/accommodation</a>
<b>Campus Facilities</b>	<a href="http://www.northumbria.ac.uk/campus">www.northumbria.ac.uk/campus</a>
<b>Careers</b>	<a href="http://www.northumbria.ac.uk/careers">www.northumbria.ac.uk/careers</a>
<b>International Student Support</b>	<a href="http://www.northumbria.ac.uk/internationalsupport">www.northumbria.ac.uk/internationalsupport</a>
<b>Library</b>	<a href="http://www.northumbria.ac.uk/library">www.northumbria.ac.uk/library</a>
<b>Money Matters</b>	<a href="http://www.northumbria.ac.uk/moneymatters">www.northumbria.ac.uk/moneymatters</a>
<b>Parents Page</b>	<a href="http://www.northumbria.ac.uk/parents">www.northumbria.ac.uk/parents</a>
<b>Scholarships</b>	<a href="http://www.northumbria.ac.uk/scholarships">www.northumbria.ac.uk/scholarships</a>
<b>Sport</b>	<a href="http://www.northumbria.ac.uk/sport">www.northumbria.ac.uk/sport</a>
<b>Student Support</b>	<a href="http://www.northumbria.ac.uk/slw">www.northumbria.ac.uk/slw</a>
<b>Students' Union</b>	<a href="http://www.northumbria.ac.uk/studentsunion">www.northumbria.ac.uk/studentsunion</a>

## Get In Touch

If you are unable to find the answer to your question on our website you can contact our teams by email or phone.

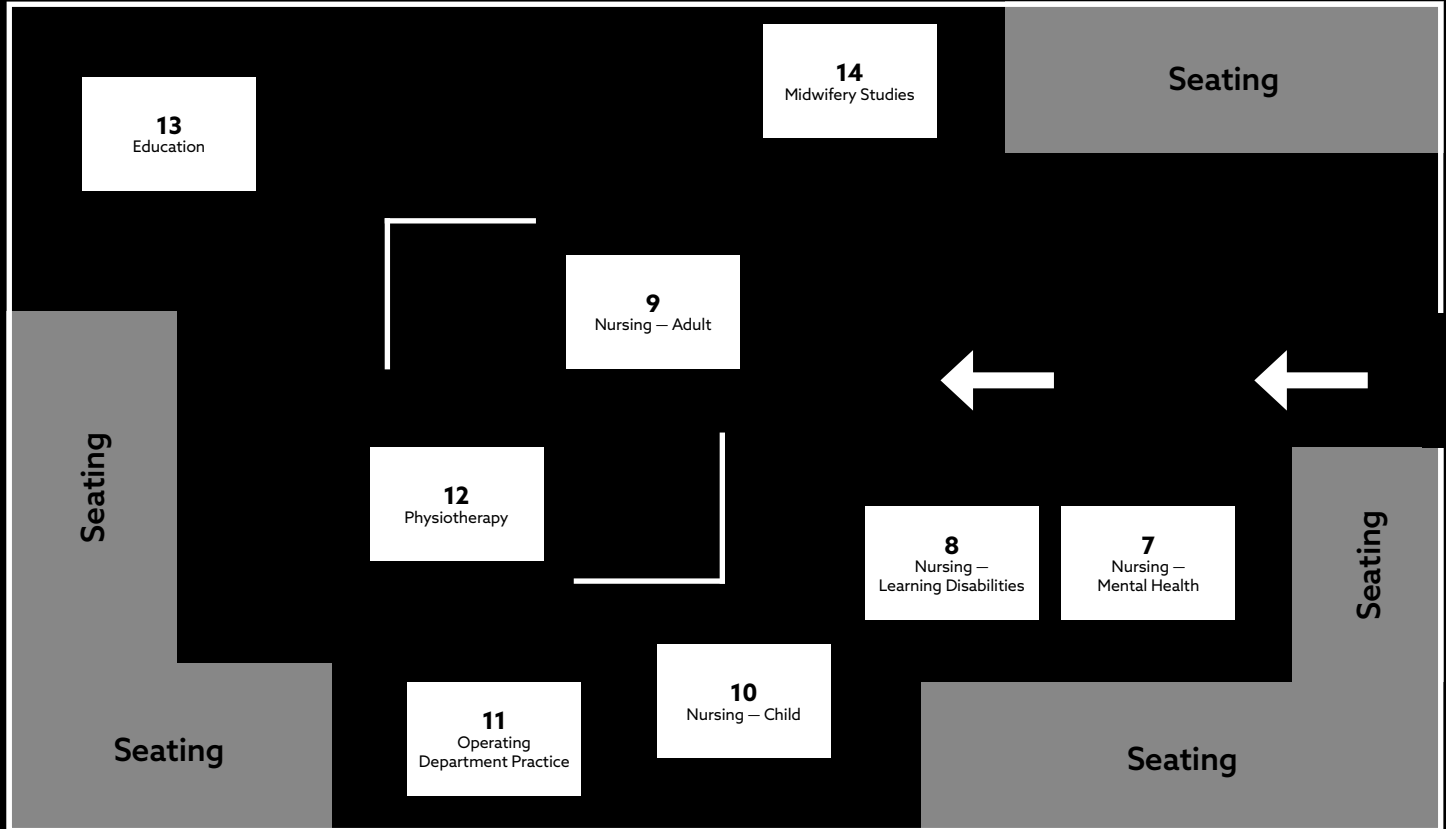
<b>Accommodation</b>	<a href="mailto:rc.accommodation.office@northumbria.ac.uk">rc.accommodation.office@northumbria.ac.uk</a>	0191 227 4209
<b>Applicant Services</b>	<a href="mailto:bc.applicantservices@northumbria.ac.uk">bc.applicantservices@northumbria.ac.uk</a>	0191 406 0901
<b>Sport Central</b>	<a href="mailto:northumbriasport@northumbria.ac.uk">northumbriasport@northumbria.ac.uk</a>	0191 227 4700
<b>Student Funding</b>	<a href="mailto:ask4help@northumbria.ac.uk">ask4help@northumbria.ac.uk</a>	0191 227 4050
<b>Student Support</b>	<a href="mailto:ask4help@northumbria.ac.uk">ask4help@northumbria.ac.uk</a>	0191 227 4646

# General Sessions and Tours – Coach Lane Campus

Session	Description	Time	Venue	Map Reference
<b>Central Exhibition</b>	Find out more about our fantastic courses, facilities, accommodation and support services. Staff from across the University and current students will be available to tell you everything you need to know.	TBC	TBC	TBC
<b>University Executive Welcome</b>	A welcome to Northumbria University, explaining who we are and why you should choose to study at Northumbria.	TBC	TBC	TBC
<b>Funding Your Undergraduate Study</b>	An opportunity to find out information about applying for UK* undergraduate student funding, maximising your income, as well as guidance on budgeting. <i>*Non-UK students can get advice at the Student Support and Wellbeing Stand in the Central Exhibition.</i>	TBC	TBC	TBC
<b>Persuasive Personal Statement and your UCAS Journey</b>	A detailed look at the UCAS application process and writing of a personal statement, including real examples sent to Northumbria.	TBC	TBC	TBC
<b>Campus Tours</b>	A student-led walking tour of the campus. (allow 30 minutes)	TBC	TBC	TBC
<b>Clinical Skills Centre Tours</b>	A tour of our innovative Clinical Skills Centre	TBC	TBC	TBC
<b>Self-guided Library Tours</b>	Visitors are welcome to look around the Library at their leisure, with staff on hand to answer any questions.	TBC	TBC	TBC
<b>Sport Central Tours (City Campus)</b>	A student-led walking tour of the award winning facilities in Sport Central.	TBC	TBC	TBC
<b>Accommodation Open Houses (City Campus)</b>	See the map for locations, call in at your leisure or visit the Accommodation stand in the Central Exhibition for a student guide.	TBC	TBC	TBC

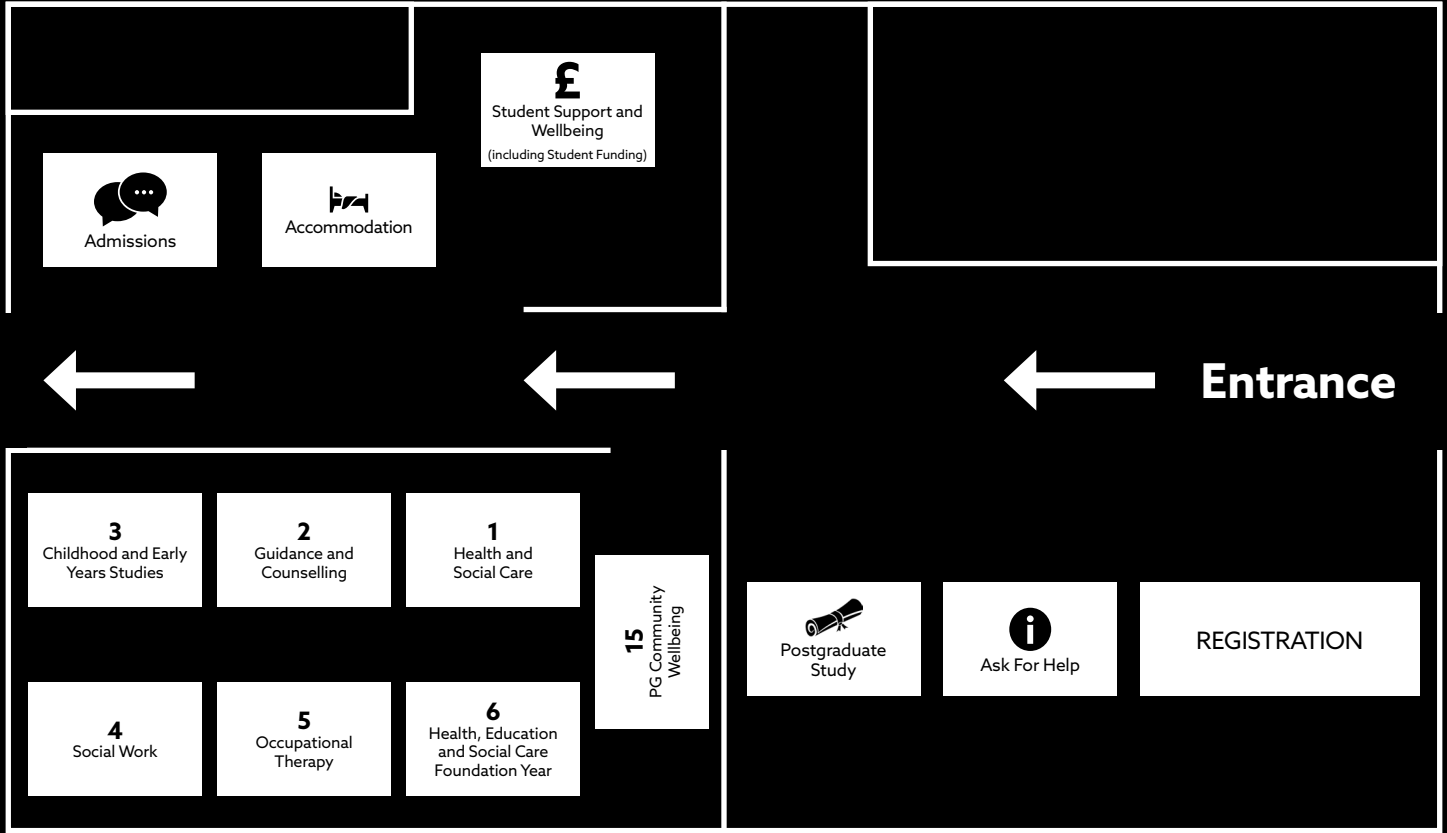
# Coach Lane Campus - Hub Subject Stands

*Please note this is a sample and subject to change*



# Coach Lane Campus - Registration, Support Services & Subject Stands

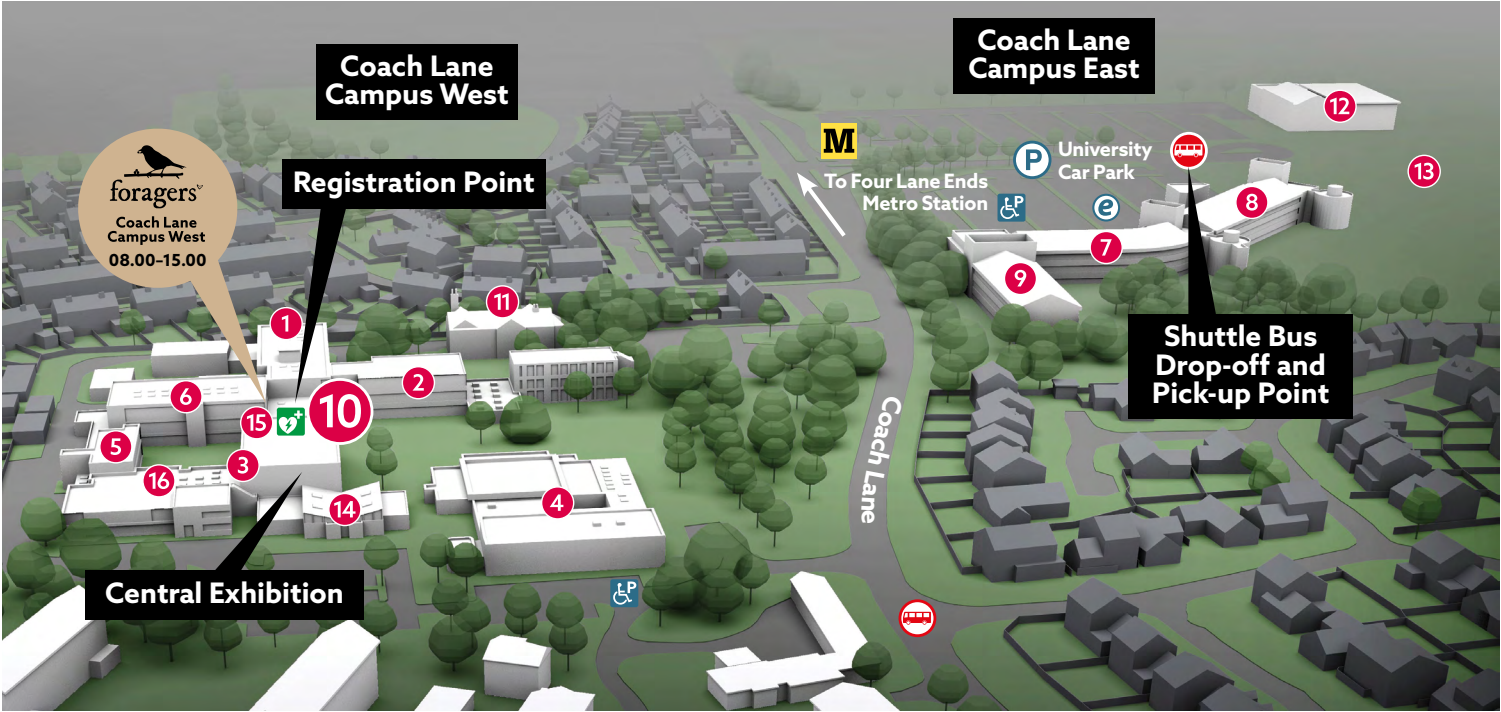
*Please note this is a sample and subject to change*





# Coach Lane Campus Map


- Parking
- Bus Stop (Free Bus)
- Public Bus
- Accessible Parking
- Automated External Defibrillator
- Electric Vehicle Charge Point



- KEY**  
 1. A Block  
 2. B Block
3. C Block (Halls A and B)  
 4. Clinical Skills Centre  
 5. D Block
6. E Block  
 7. G Block  
 8. H Block
9. F Block Library Student Central  
**10. Main Reception and Entrance**  
 11. Manor House
12. High Performance Centre  
 13. Sports Pitches
14. Coach Lane Hub  
 15. Foragers  
 16. Hall D

## Shuttle Buses

You can travel from Coach Lane Campus to and from City Campus free of charge on our shuttle bus during the day.

Buses depart from Coach Lane Campus East (see  on the map on page 28) between 09.30 and 15.30 every 20-30 minutes.

The last bus back to City Campus East from Coach Lane Campus East leaves at 15.30.

Please allow up to 25 minutes for your journey.



# Which Campus?

## Check Which Campus to Attend

Northumbria University has **two** campuses in Newcastle – City Campus and Coach Lane Campus. Please make sure you check which Campus the subjects that you are interested in are held at.

If you are interested in any of the courses in the list to the right, these are at **Coach Lane Campus** so you are on the correct side of the Programme for your Subject Sessions. If the subjects that you are interested in are at **City Campus**, please turn the Programme over for further information on your Subject Sessions, General Sessions and Tours.

- Childhood and Early Years Studies
- Guidance and Counselling
- Health and Social Care
- Health, Education and Social Care Foundation Year
- Midwifery
- Nursing
- Occupational Therapy
- Operating Department Practice
- Physiotherapy
- Primary Education
- Social Work

There is lots on offer at both campuses so you won't miss out. There is also a **free shuttle bus** between City Campus and Coach Lane Campus running on the day if you would like to see both campuses (see page 29).

## Contents

Welcome	21
Which Campus?	20
Shuttle Buses	20
Coach Lane Campus Map	19
Coach Lane Central Exhibition Guide	18-17
General Sessions and Tours	16
Find Out More	15
Day Planner	14
Grab a Bite to Eat	13
City Campus Programme Accommodation Map	10-11 9
Getting Here	6
How to Make the Most of Your Day	4

# Welcome!

Welcome to Northumbria University, we are delighted that you are considering studying here and are pleased to welcome you on campus for our Open Day.

Open Days are a great opportunity to find out more about why we are a research-intensive university that unlocks potential for all, changing lives regionally, nationally and internationally. And you can find out why we are the winner of the Modern University of the Year title in the latest Good University Guide.

Visit our outstanding facilities and discover the range of support services we offer our students, as well as enjoying the vibrant student community that we have here in Newcastle. Be sure to talk to our staff and students and ask lots of questions while you are here.

We hope you enjoy your day!

**Northumbria University  
Open Day Team**

[ug.events@northumbria.ac.uk](mailto:ug.events@northumbria.ac.uk)

*We recommend that you arrive on campus at least 30 minutes before your first talk or activity to give yourself time to check in at one of our Registration points.*

*Please note that information, advice and guidance received at the Open Day is accurate as of today, but can be subject to change as we review our courses to ensure that they are up to date and relevant and that you are receiving the best possible educational experience. Our website is the most up to date place to review our information. In the event of changes the University will consult and inform students in good time and will take reasonable steps to minimise disruption.*







**Northumbria  
University**  
NEWCASTLE

# SAMPLE OPEN DAY PROGRAMME

## COACH LANE CAMPUS

**PLEASE NOTE:** *This sample Open Day Programme provides an overview of what to expect. Details are incomplete as they may be subject to change, but you will receive a full programme with specific session times and locations closer to the event.*

**#NUOpenDay**



THE  TIMES  
THE SUNDAY TIMES

**GOOD UNIVERSITY  
GUIDE 2025**

**MODERN UNIVERSITY  
OF THE YEAR**