

FIRE EQUIPMENT

⊙ FIRE ALARM CALL POINT/BREAK GLASS

FIRE EXTINGUISHERS

▲<sub>H<sub>2</sub>O</sub> WATER EXTINGUISHER

▲<sub>CO<sub>2</sub></sub> CARBON DIOXIDE EXTINGUISHER

▲<sub>F</sub> FOAM EXTINGUISHER

▲<sub>P</sub> POWDER EXTINGUISHER

▲<sub>B</sub> FIRE BLANKET

⊙<sub>G</sub> GAS SHUT OFF VALVE

⊙<sub>W</sub> WATER SHUT OFF TAP (LOCATED ON PATH)

⊙<sub>E</sub> ELECTRIC SHUT OFF SWITCH



**Campus Services**

Pandon Building  
Camden Street  
Newcastle Upon Tyne  
NE1 8ST

Campus: CITY CENTRE  
Building: COLLEGE HOUSE  
Project: GROUND FLOOR

Scale: NTS Date: APRIL 2017

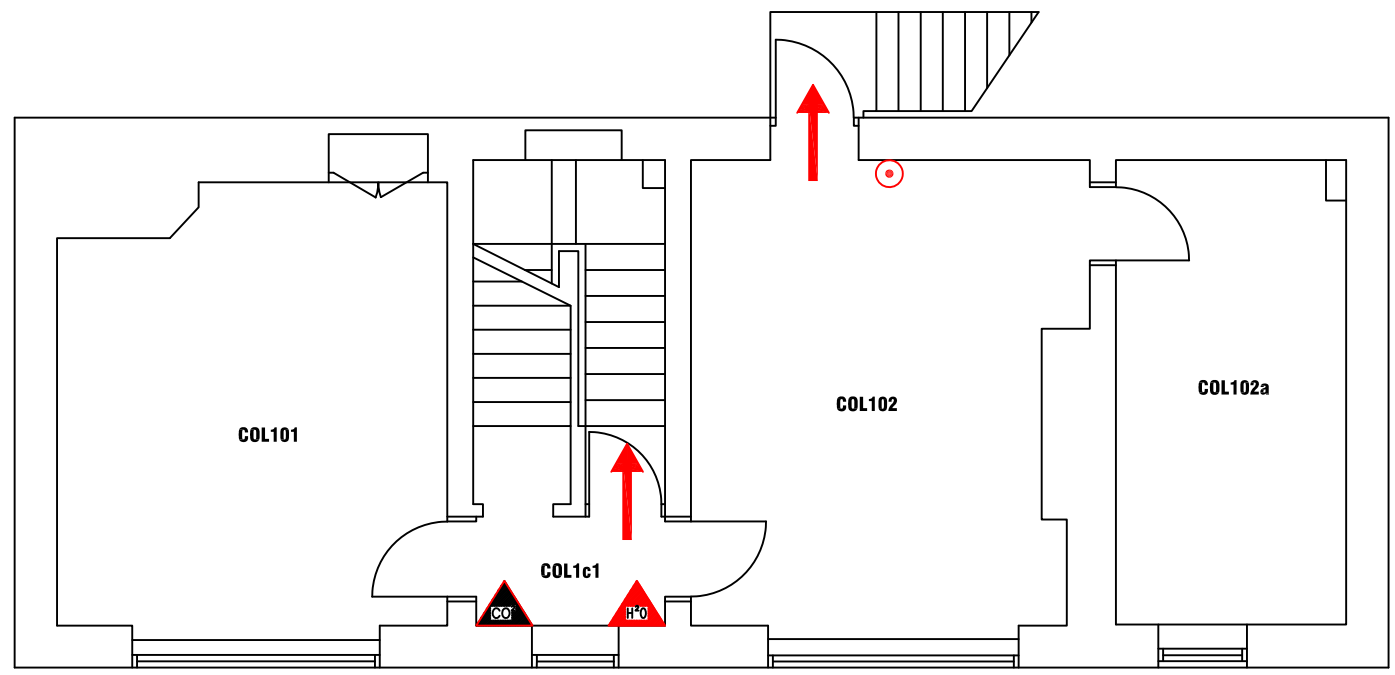
Drawn:

Issued:

Job Reference No:

Drawing No:


Revision



FIRE EQUIPMENT

⊙ FIRE ALARM CALL POINT/BREAK GLASS

FIRE EXTINGUISHERS

 WATER EXTINGUISHER

 CARBON DIOXIDE EXTINGUISHER

 FOAM EXTINGUISHER

 POWDER EXTINGUISHER

 FIRE BLANKET



**Campus Services**

Pandon Building  
Camden Street  
Newcastle Upon Tyne  
NE1 8ST

Campus: CITY CENTRE  
Building: COLLEGE HOUSE

Project: FIRST FLOOR

Scale:

NTS

Date: APRIL 2017

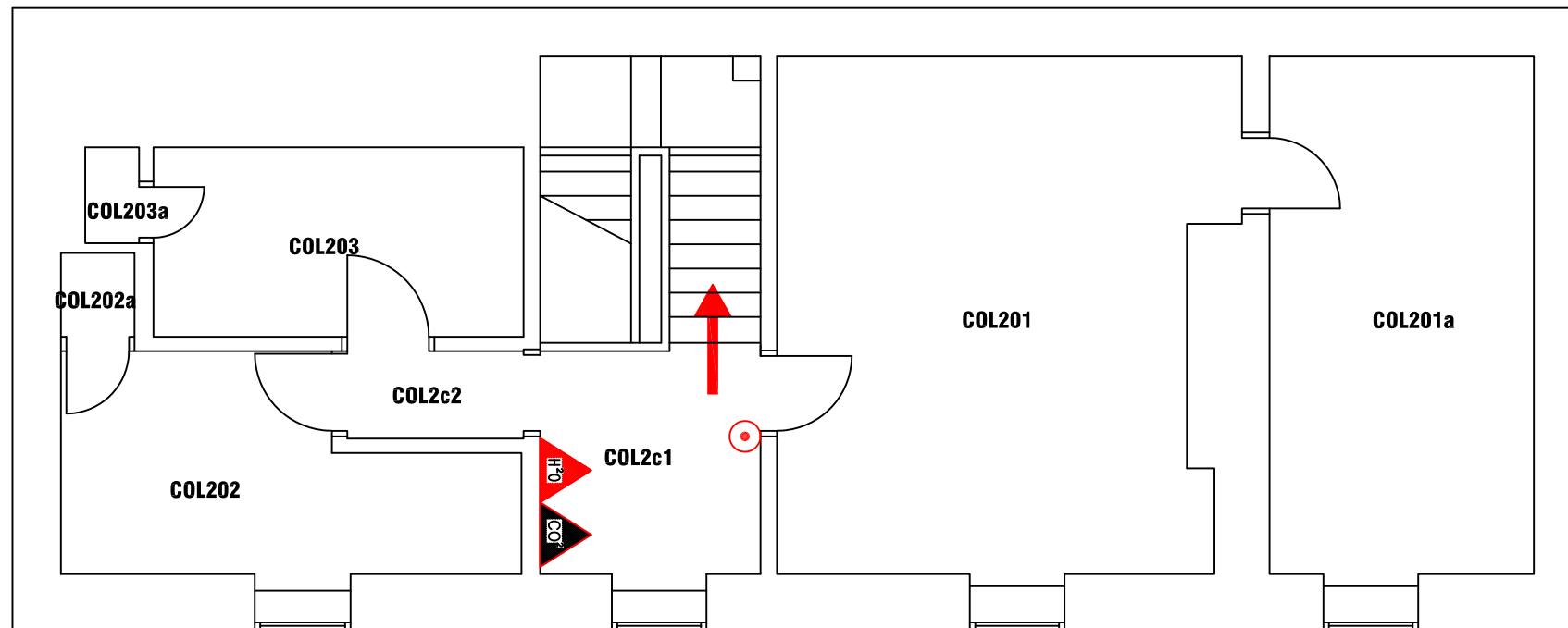
Drawn:

Issued:

Job Reference No:

Drawing No:

Revision



FIRE EQUIPMENT

 FIRE ALARM CALL POINT/BREAK GLASS

FIRE EXTINGUISHERS

 WATER EXTINGUISHER

 CARBON DIOXIDE EXTINGUISHER

 FOAM EXTINGUISHER

 POWDER EXTINGUISHER

 FIRE BLANKET



**Campus Services**

Pandon Building  
Camden Street  
Newcastle Upon Tyne  
NE1 8ST

Campus: CITY CENTRE  
Building: COLLEGE HOUSE  
Project: SECOND FLOOR

Scale: NTS Date: APRIL 2017

Drawn:

Issued:

Job Reference No:

Drawing No:

Revision