










- FIRE EQUIPMENT**
-  FIRE ALARM CALL POINT/BREAK GLASS
- FIRE EXTINGUISHERS**
-  WATER EXTINGUISHER
  -  CARBON DIOXIDE EXTINGUISHER
  -  FOAM EXTINGUISHER
  -  POWDER EXTINGUISHER
  -  FIRE BLANKET
- SHUT OFF POINTS**
-  GAS SHUT OFF VALVE
  -  WATER SHUT OFF TAP
  -  ELECTRIC SHUT OFF SWITCH



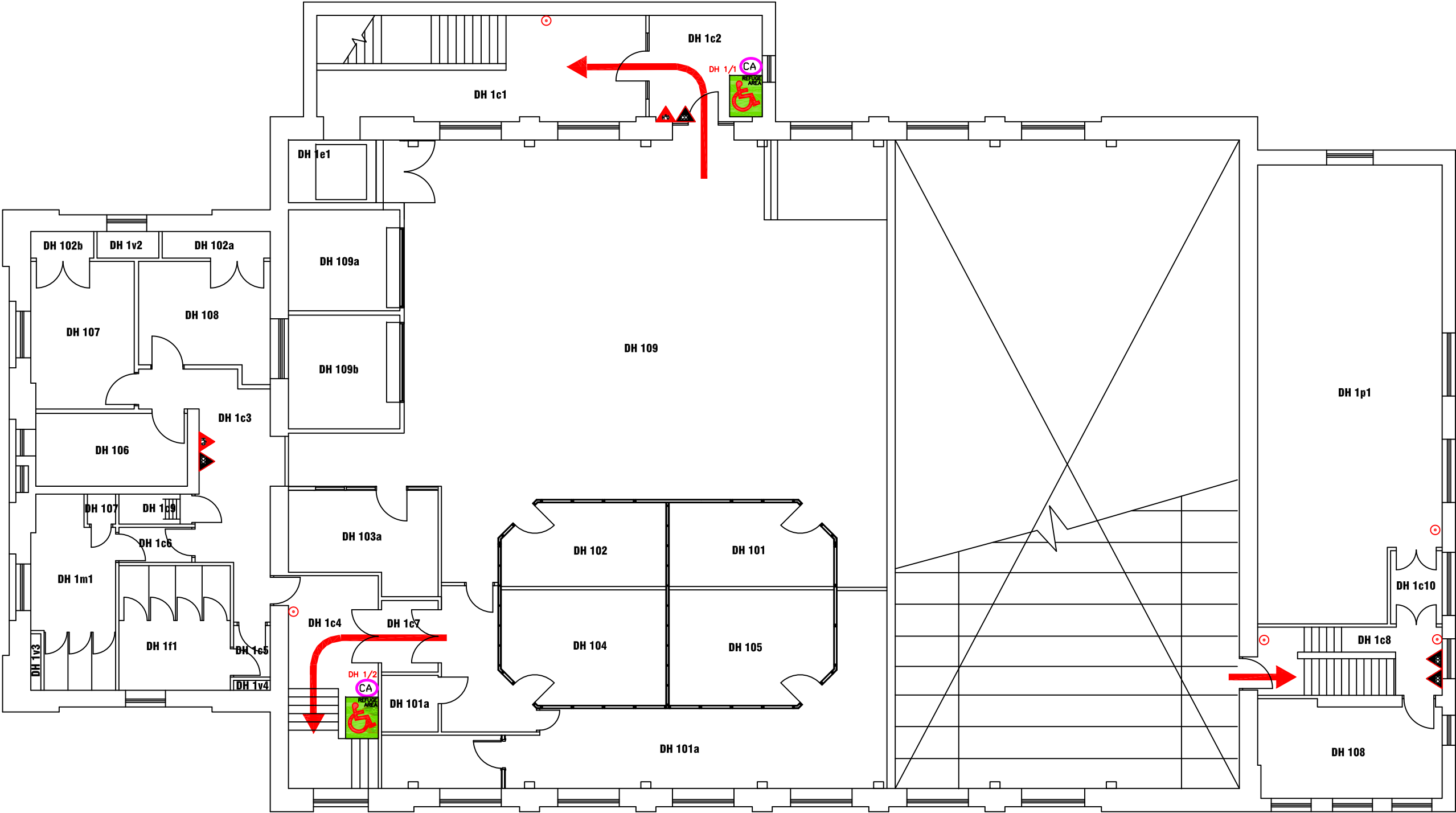


Campus: CITY CENTRE  
 Building: DRILL HALL  
 Project: GROUND FLOOR

Scale: NTS	Date: NOV 2016
	Drawn:
	Issued:

Job Reference No:

Drawing No:	Revision
-------------	----------

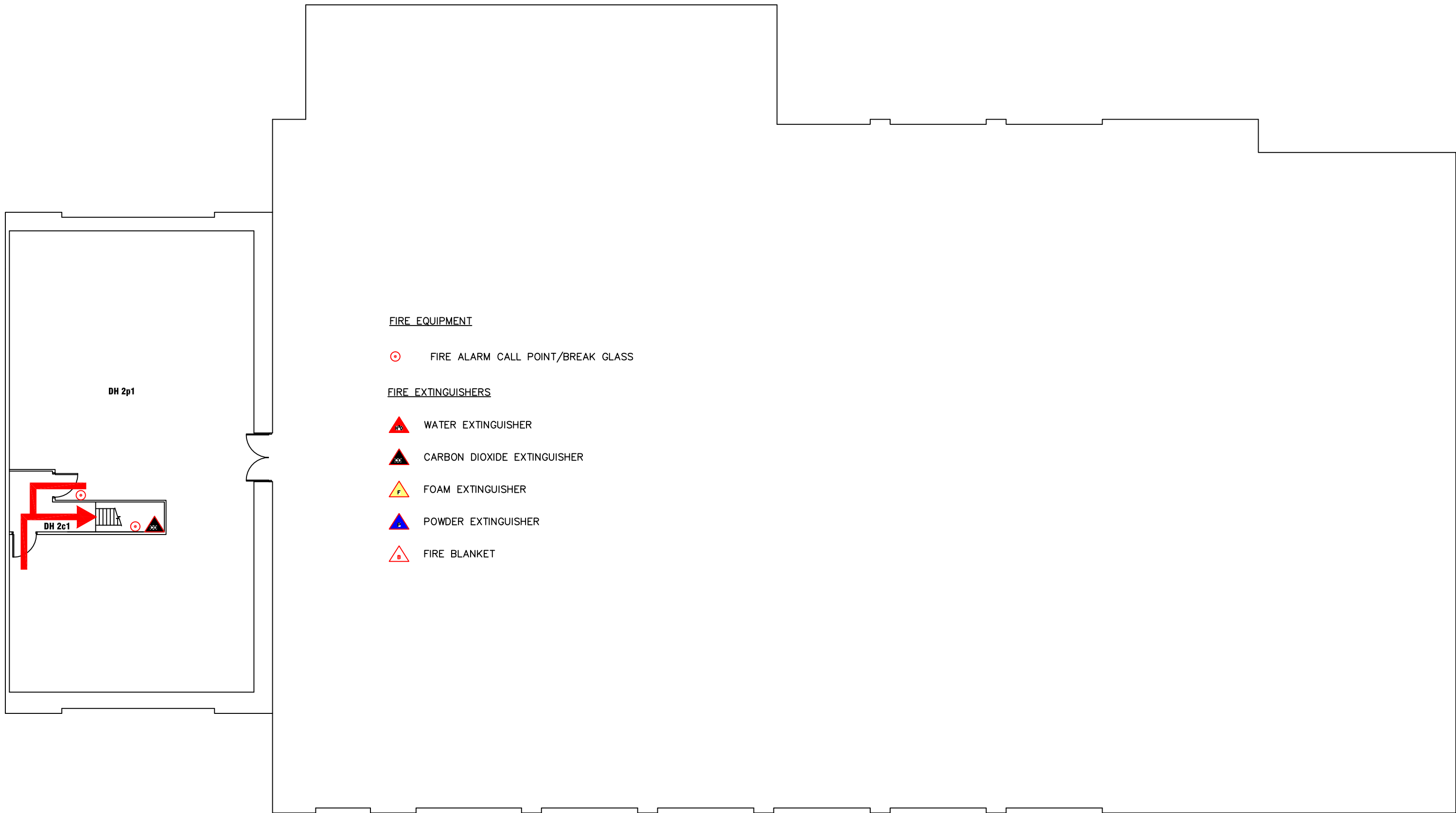


- FIRE EQUIPMENT**
- FIRE ALARM CALL POINT/BREAK GLASS
- FIRE EXTINGUISHERS**
- WATER EXTINGUISHER
  - CARBON DIOXIDE EXTINGUISHER
  - FOAM EXTINGUISHER
  - POWDER EXTINGUISHER
  - FIRE BLANKET
- FIRE REFUGE**
- REFUGE AREA
  - REFUGE AREA WITH EVACUATION CHAIR
  - EVACUATION CHAIR
  - CALL ASSISTANCE POINT



Campus: CITY CENTRE  
 Building: DRILL HALL  
 Project: FIRST FLOOR

Scale:	Date: JUNE 2017
NTS	Drawn:
	Issued:
Job Reference No:	
Drawing No:	Revision



FIRE EQUIPMENT

⊙ FIRE ALARM CALL POINT/BREAK GLASS

FIRE EXTINGUISHERS

⚠ WATER EXTINGUISHER

⚠ CARBON DIOXIDE EXTINGUISHER

⚠ FOAM EXTINGUISHER

⚠ POWDER EXTINGUISHER

⚠ FIRE BLANKET



**Campus Services**

Pandon Building  
Camden Street  
Newcastle Upon Tyne  
NE1 8ST

Campus: CITY CENTRE  
Building: DRILL HALL  
Project: SECOND FLOOR

Scale: Date: MAY 2015

NTS Drawn:

Issued:

Job Reference No:

Drawing No: Revision