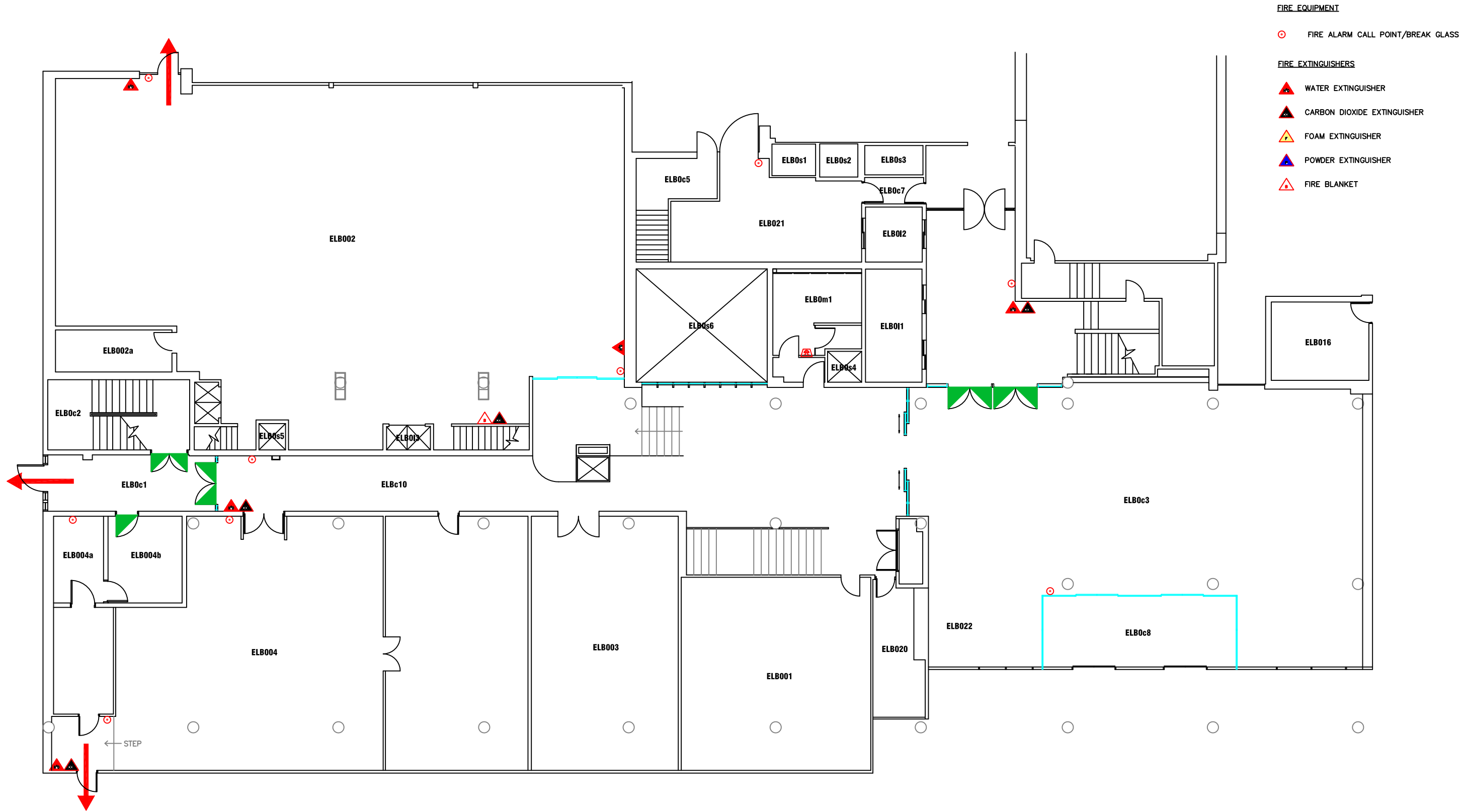


- FIRE EQUIPMENT**
- FIRE ALARM CALL POINT/BREAK GLASS
- FIRE EXTINGUISHERS**
- ▲ WATER EXTINGUISHER
 - ▲ CARBON DIOXIDE EXTINGUISHER
 - ▲ FOAM EXTINGUISHER
 - ▲ POWDER EXTINGUISHER
 - ▲ FIRE BLANKET
- FIRE REFUGE**
- REFUGE AREA
 - REFUGE AREA WITH EVACUATION CHAIR
 - ♿ EVACUATION CHAIR
 - CA CALL ASSISTANCE POINT



Campus: CITY CENTRE Building: ELLISON BUILDING BLOCK B Project: BASEMENT LEVEL	Scale:	Date: JUNE 2017
	NTS	Drawn:
		Issued:
Job Reference No:		
Drawing No:	Revision	

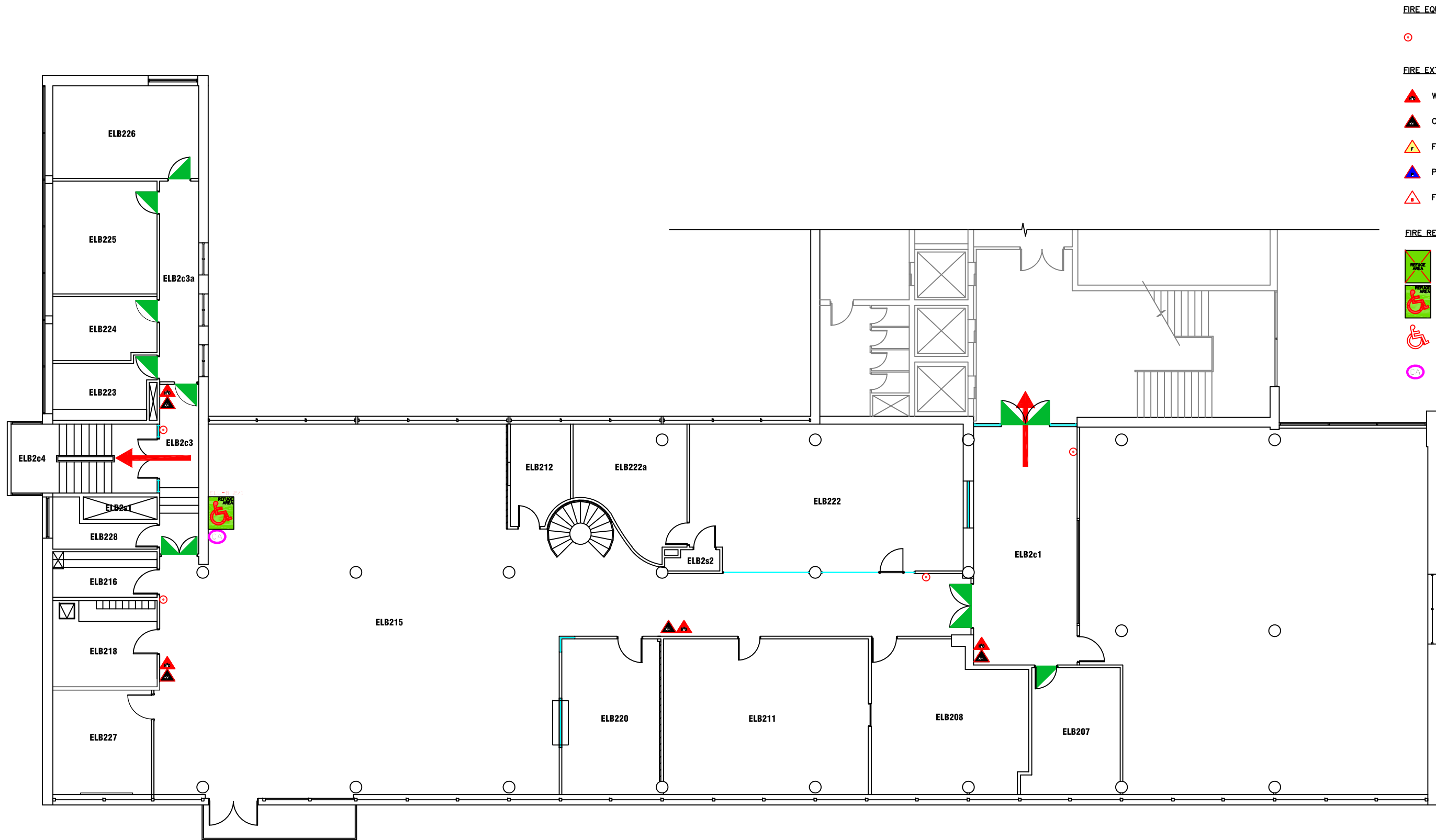


- FIRE EQUIPMENT**
- FIRE ALARM CALL POINT/BREAK GLASS
- FIRE EXTINGUISHERS**
- ▲ WATER EXTINGUISHER
 - ▲ CARBON DIOXIDE EXTINGUISHER
 - ▲ FOAM EXTINGUISHER
 - ▲ POWDER EXTINGUISHER
 - ▲ FIRE BLANKET



Campus: CITY CENTRE
 Building: ELLISON BUILDING BLOCK B
 Project: GROUND FLOOR






Scale: NTS	Date: FEB 2017
	Drawn:
	Issued:
Job Reference No:	
Drawing No:	Revision







FIRE EQUIPMENT

○ FIRE ALARM CALL POINT/BREAK GLASS

FIRE EXTINGUISHERS

-  WATER EXTINGUISHER
-  CARBON DIOXIDE EXTINGUISHER
-  FOAM EXTINGUISHER
-  POWDER EXTINGUISHER
-  FIRE BLANKET

FIRE REFUGE

-  REFUGE AREA
-  REFUGE AREA WITH EVACUATION CHAIR
-  EVACUATION CHAIR
-  CALL ASSISTANCE POINT



Campus Services

Pandon Building
Camden Street
Newcastle Upon Tyne
NE1 8ST

Campus: CITY CENTRE
Building: ELLISON BUILDING BLOCK B
Project: SECOND FLOOR

Scale: NTS Date: FEB 2017

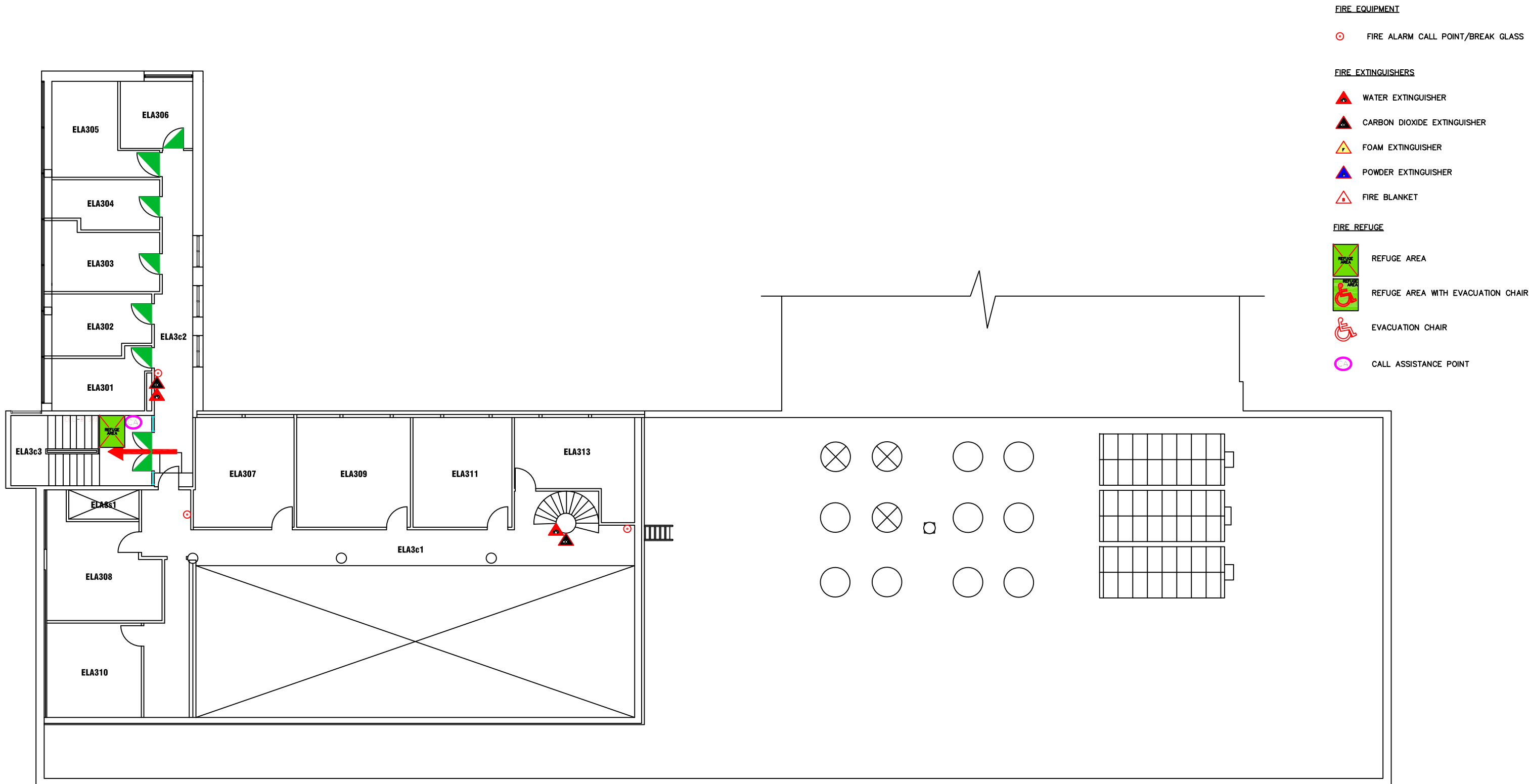
Drawn:

Issued:

Job Reference No:

Drawing No:

Revision



Campus: CITY CENTRE Building: ELLISON BUILDING BLOCK B Project: THIRD FLOOR	Scale:	Date: SEPT 2017
	NTS	Drawn:
		Issued:
Job Reference No:		
Drawing No:	Revision	