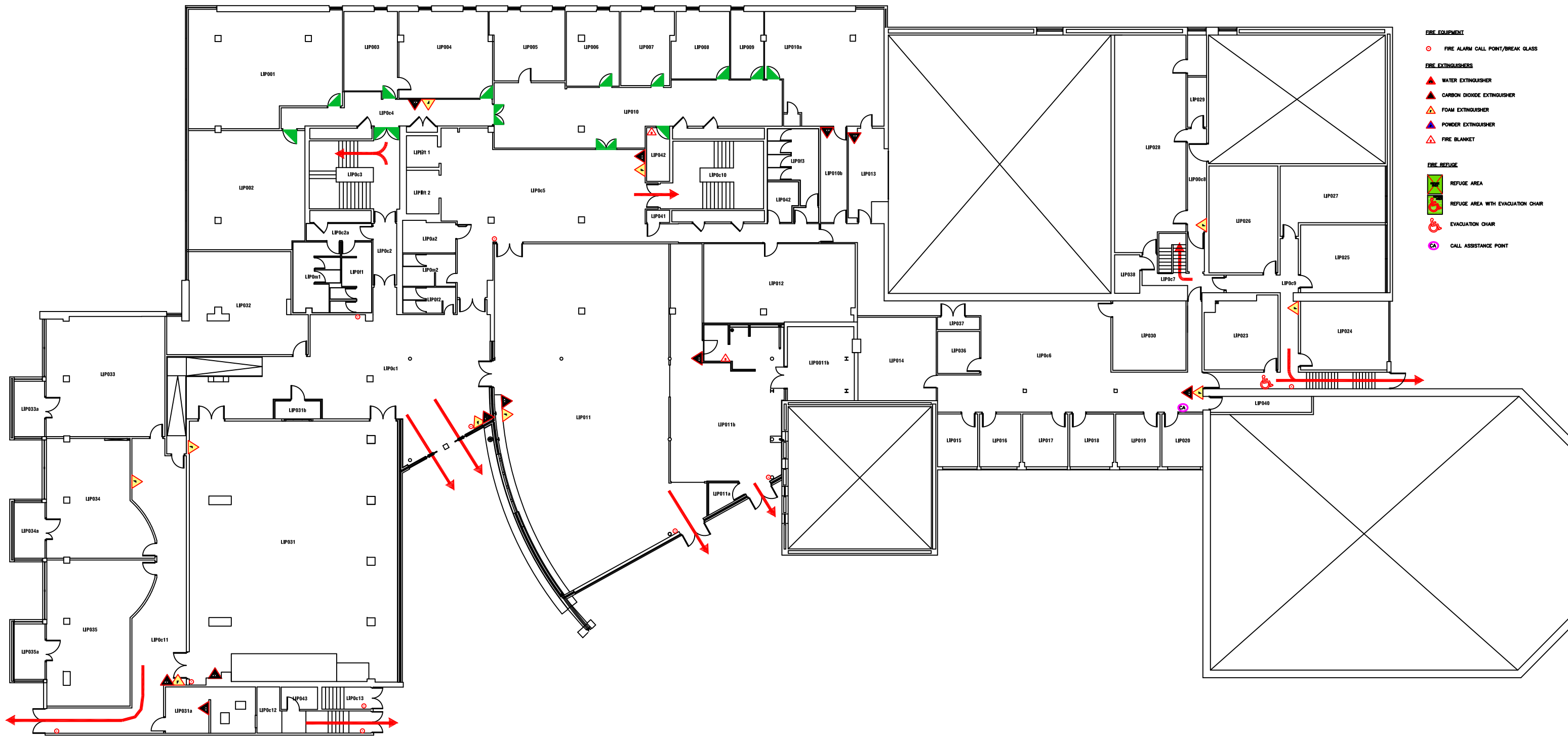


- FIRE EQUIPMENT**
- FIRE ALARM CALL POINT/BREAK GLASS
- FIRE EXTINGUISHERS**
- ▲ WATER EXTINGUISHER
 - ▲ CARBON DIOXIDE EXTINGUISHER
 - ▲ FOAM EXTINGUISHER
 - ▲ POWDER EXTINGUISHER
 - ▲ FIRE BLANKET
- FIRE REFUGE**
- REFUGE AREA
 - REFUGE AREA WITH EVACUATION CHAIR
 - ♿ EVACUATION CHAIR
 - CALL ASSISTANCE POINT



Campus: CITY CENTRE
 Building: LIPMAN
 Project: BASEMENT LEVEL

Scale:	Date: SEPT 2017
NTS	Drawn:
	Issued:
Job Reference No:	
Drawing No:	Revision



- FIRE EQUIPMENT**
- FIRE ALARM CALL POINT/BREAK GLASS
- FIRE EXTINGUISHERS**
- ▲ WATER EXTINGUISHER
 - ▲ CARBON DIOXIDE EXTINGUISHER
 - ▲ FOAM EXTINGUISHER
 - ▲ POWDER EXTINGUISHER
 - ▲ FIRE BLANKET
- FIRE REFUGE**
- REFUGE AREA
 - REFUGE AREA WITH EVACUATION CHAIR
 - ♿ EVACUATION CHAIR
 - CA CALL ASSISTANCE POINT



Campus: CITY CENTRE
 Building: LIPMAN
 Project: GROUND FLOOR

Scale: NTS	Date: OCT 2017
	Drawn:
	Issued:
Job Reference No:	
Drawing No:	Revision



- FIRE EQUIPMENT**
- FIRE ALARM CALL POINT/BREAK GLASS
- FIRE EXTINGUISHERS**
- ▲ WATER EXTINGUISHER
 - ▲ CARBON DIOXIDE EXTINGUISHER
 - ▲ FOAM EXTINGUISHER
 - ▲ POWDER EXTINGUISHER
 - ▲ FIRE BLANKET
- FIRE REFUGE**
- REFUGE AREA
 - REFUGE AREA WITH EVACUATION CHAIR
 - ♿ EVACUATION CHAIR
 - CALL ASSISTANCE POINT



Pandon Building
Camden Street
Newcastle Upon Tyne
NE1 8ST











Campus: CITY CENTRE
Building: LIPMAN BUILDING
Project: FIRST FLOOR

Scale: NTS	Date: SEPT 2017
	Drawn:
	Issued:

Job Reference No:

Drawing No:	Revision
-------------	----------



- FIRE EQUIPMENT**
-  FIRE ALARM CALL POINT/BREAK GLASS
- FIRE EXTINGUISHERS**
-  WATER EXTINGUISHER
 -  CARBON DIOXIDE EXTINGUISHER
 -  FOAM EXTINGUISHER
 -  POWDER EXTINGUISHER
 -  FIRE BLANKET
- FIRE REFUGE**
-  REFUGE AREA
 -  REFUGE AREA WITH EVACUATION CHAIR
 -  EVACUATION CHAIR
 -  CALL ASSISTANCE POINT



Campus Services

Pandon Building
Camden Street
Newcastle Upon Tyne
NE1 8ST

Campus: CITY CENTRE
Building: LIPMAN
Project: SECOND FLOOR

Scale:	Date: SEPT 2017
NTS	Drawn:
	Issued:

Job Reference No:

Drawing No:	Revision
-------------	----------



- FIRE EQUIPMENT**
- FIRE ALARM CALL POINT/BREAK GLASS
- FIRE EXTINGUISHERS**
- WATER EXTINGUISHER
 - CARBON DIOXIDE EXTINGUISHER
 - FOAM EXTINGUISHER
 - POWDER EXTINGUISHER
 - FIRE BLANKET
- FIRE REFUGE**
- REFUGE AREA
 - REFUGE AREA WITH EVACUATION CHAIR
 - EVACUATION CHAIR
 - CALL ASSISTANCE POINT

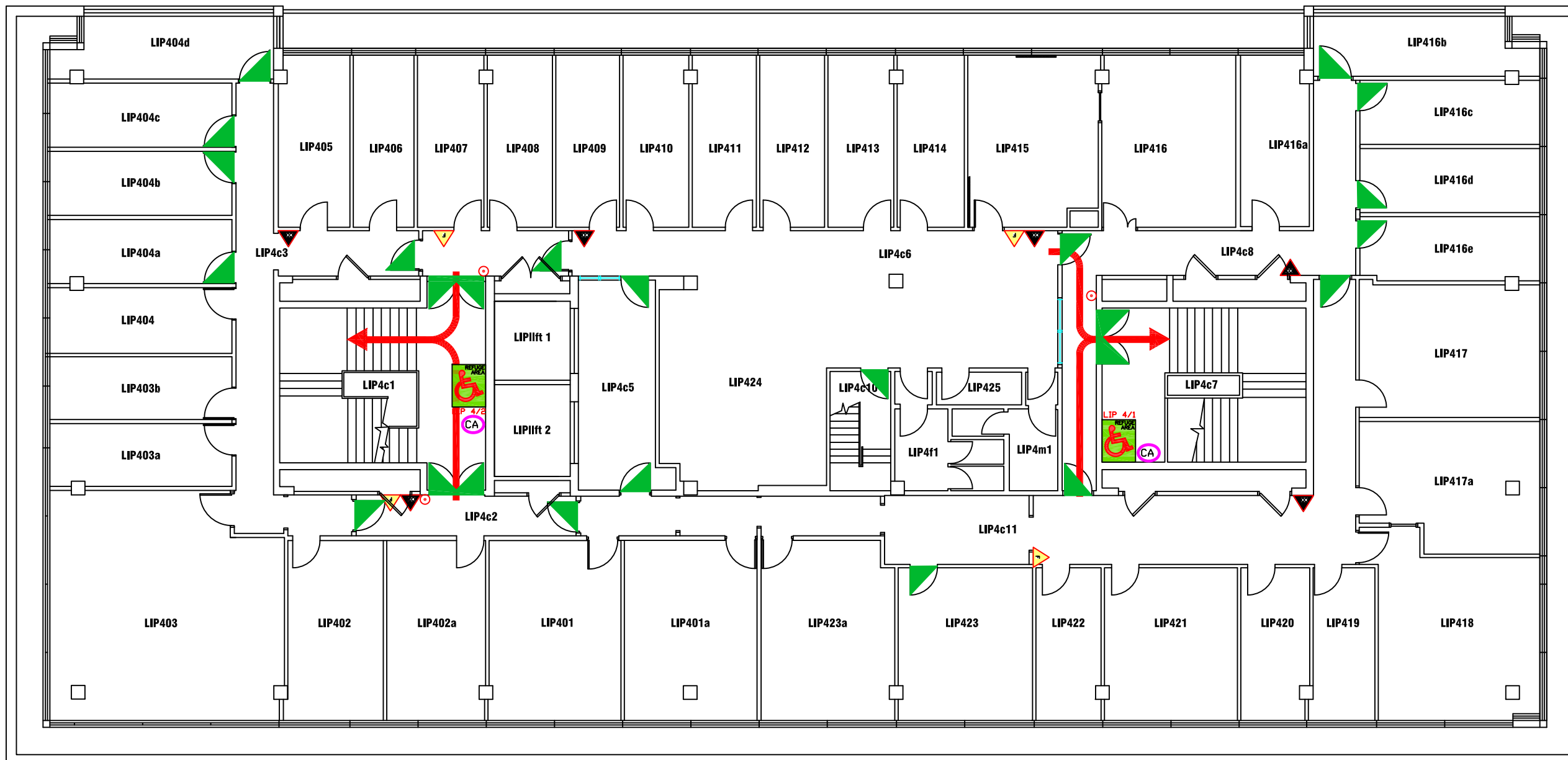


Campus: CITY CENTRE
 Building: LIPMAN
 Project: THIRD FLOOR

Scale:	Date: SEPT 2017
NTS	Drawn:
	Issued:

Job Reference No:

Drawing No:	Revision
-------------	----------

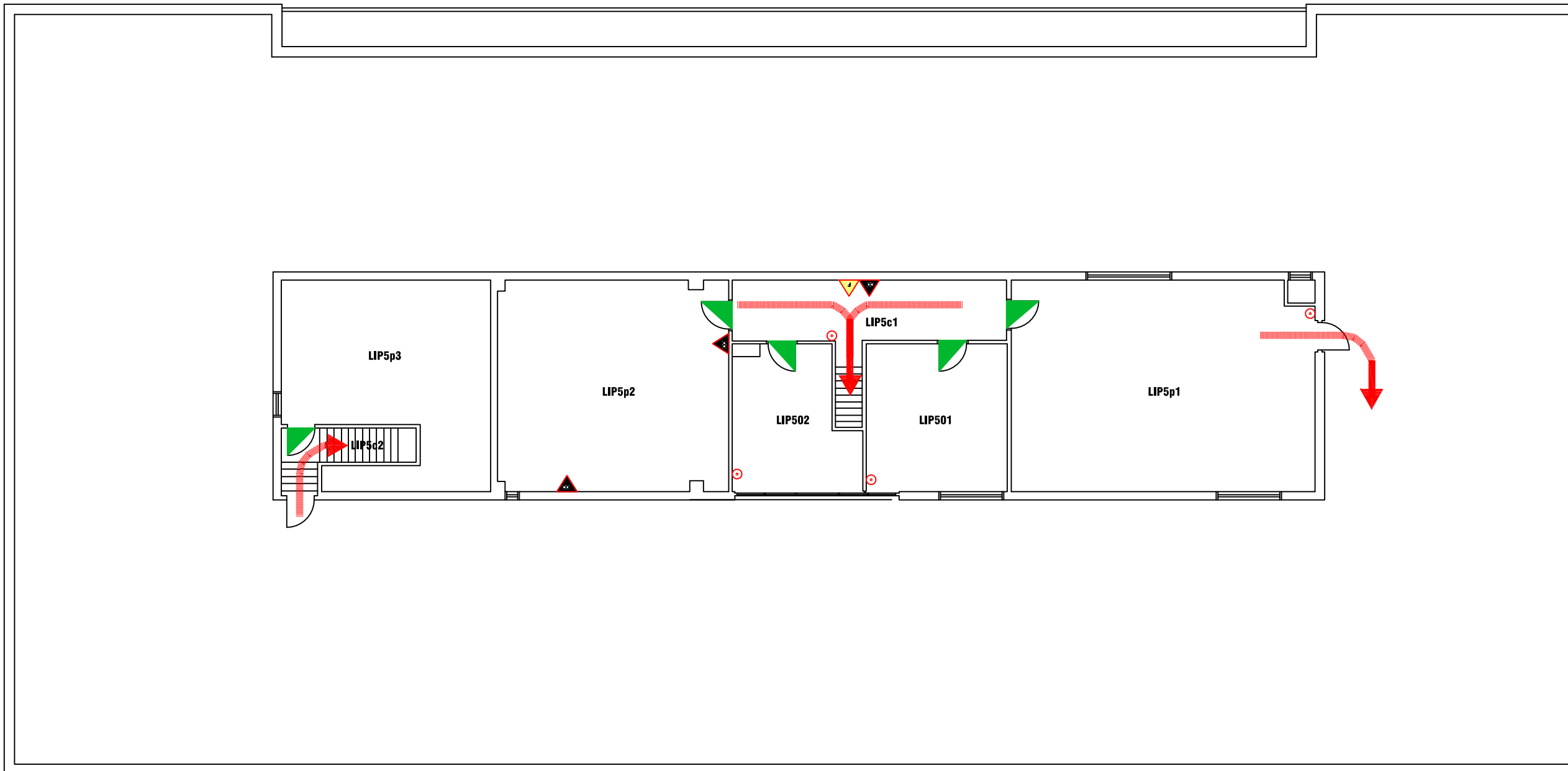


- FIRE EQUIPMENT**
- FIRE ALARM CALL POINT/BREAK GLASS
- FIRE EXTINGUISHERS**
- WATER EXTINGUISHER
 - CARBON DIOXIDE EXTINGUISHER
 - FOAM EXTINGUISHER
 - POWDER EXTINGUISHER
 - FIRE BLANKET
- FIRE REFUGE**
- REFUGE AREA
 - REFUGE AREA WITH EVACUATION CHAIR
 - EVACUATION CHAIR
 - CALL ASSISTANCE POINT



Campus: CITY CENTRE
 Building: LIPMAN
 Project: FOURTH FLOOR

Scale:	Date: SEPT 2017
NTS	Drawn:
	Issued:
Job Reference No:	
Drawing No:	Revision



FIRE EQUIPMENT

○ FIRE ALARM CALL POINT/BREAK GLASS

FIRE EXTINGUISHERS

▲ WATER EXTINGUISHER

▲ CARBON DIOXIDE EXTINGUISHER

▲ FOAM EXTINGUISHER

▲ POWDER EXTINGUISHER

▲ FIRE BLANKET



Campus Services

Pandon Building
Camden Street
Newcastle Upon Tyne
NE1 8ST

Campus: CITY CENTRE

Building: LIPMAN

Project: FIFTH FLOOR

Scale:

NTS

Date: JULY 2017

Drawn:

Issued:

Job Reference No:

Drawing No:

Revision