









**FIRE EQUIPMENT**

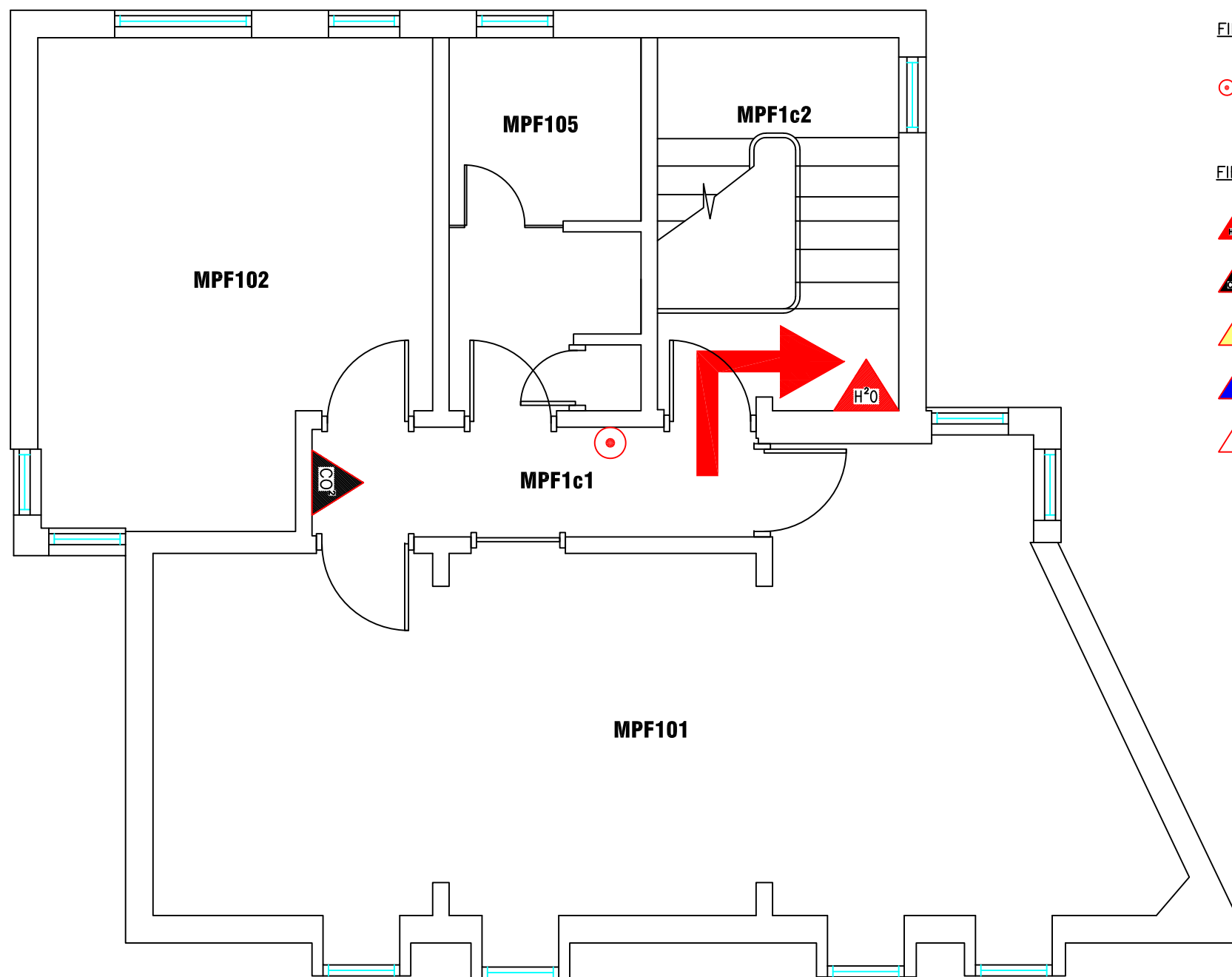
● FIRE ALARM CALL POINT/BREAK GLASS

**FIRE EXTINGUISHERS**

-  WATER EXTINGUISHER
-  CARBON DIOXIDE EXTINGUISHER
-  FOAM EXTINGUISHER
-  POWDER EXTINGUISHER
-  FIRE BLANKET
-  GAS SHUT OFF VALVE
-  WATER SHUT OFF TAP
-  ELECTRIC SHUT OFF SWITCH



Campus: CITY CENTRE Building: MUSLIM PRAYER FACILITY Project: GROUND FLOOR	Scale: NTS	Date: NOV 2016
		Drawn: Issued:
Job Reference No:		
Drawing No:	Revision	



**FIRE EQUIPMENT**

 FIRE ALARM CALL POINT/BREAK GLASS

**FIRE EXTINGUISHERS**

 WATER EXTINGUISHER

 CARBON DIOXIDE EXTINGUISHER

 FOAM EXTINGUISHER

 POWDER EXTINGUISHER

 FIRE BLANKET



**Campus Services**

Pandon Building  
Camden Street  
Newcastle Upon Tyne  
NE1 8ST

Campus: CITY CENTRE  
Building: MUSLIM PRAYER FACILITY  
Project: FIRST FLOOR

Scale: Date: NOV 2016

NTS Drawn:

Issued:

Job Reference No:

Drawing No:

Revision