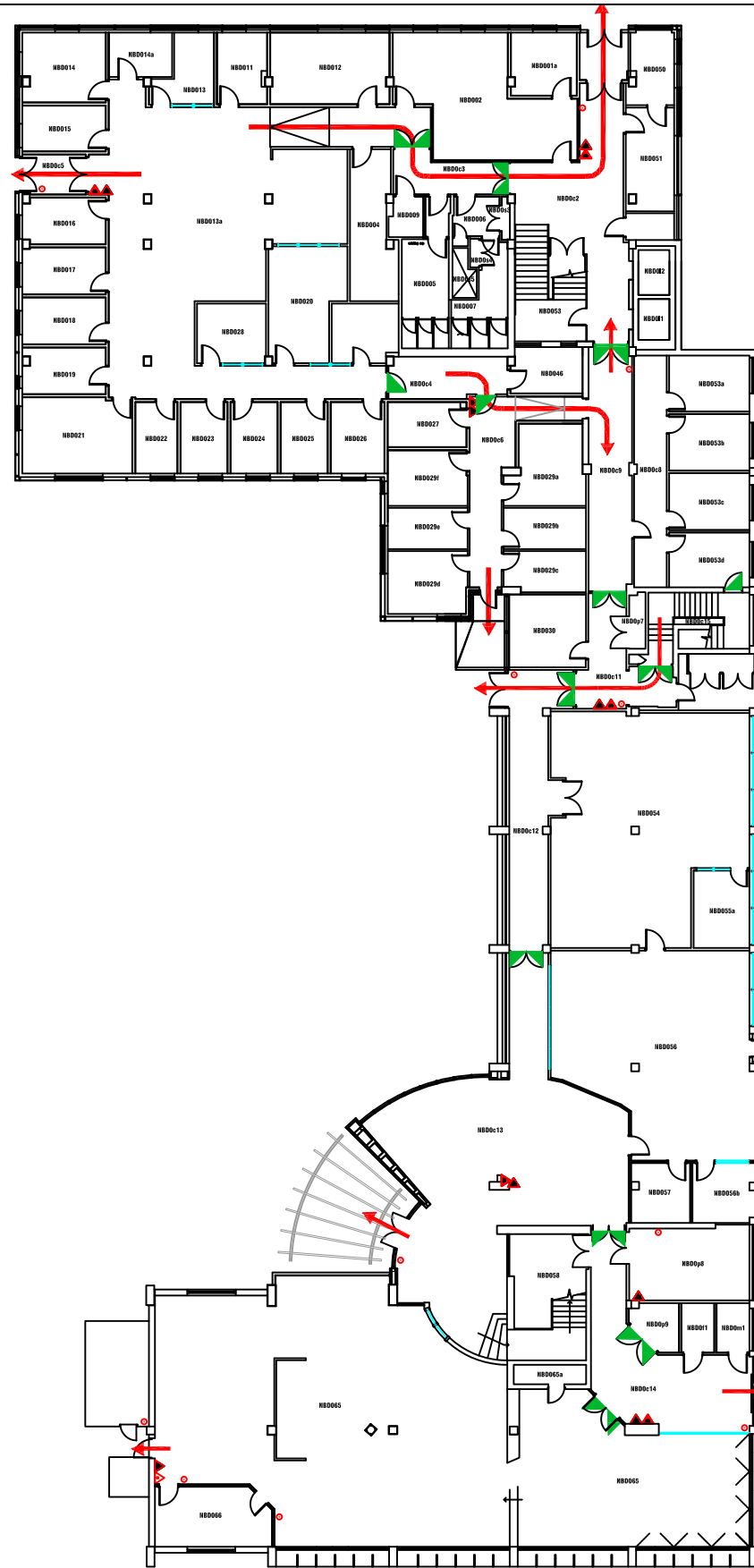
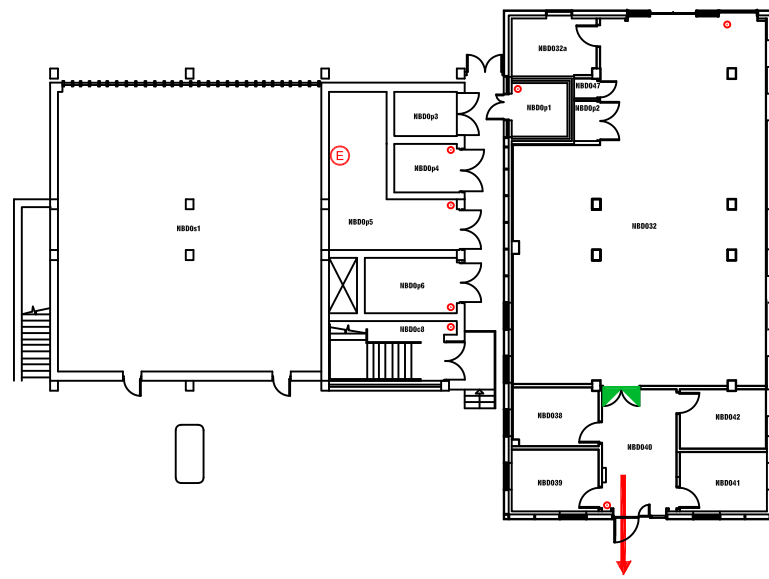


- G GAS SHUT OFF VALVE
- W WATER SHUT OFF TAP
- E ELECTRIC SHUT OFF SWITCH



Campus: CITY CENTRE		Scale:	Date: OCT 2016
Building: NORTHUMBERLAND		NTS	Drawn:
Project: BASEMENT LEVEL			Issued:
Job Reference No:			
Drawing No:			Revision



- FIRE EQUIPMENT**
- FIRE ALARM CALL POINT/BREAK GLASS
- FIRE EXTINGUISHERS**
- ▲ WATER EXTINGUISHER
  - ▲ CARBON DIOXIDE EXTINGUISHER
  - ▲ FOAM EXTINGUISHER
  - ▲ POWDER EXTINGUISHER
  - ▲ FIRE BLANKET
- SHUT OFF VALVES**
- GAS SHUT OFF VALVE
  - WATER SHUT OFF TAP
  - ELECTRIC SHUT OFF SWITCH



**Campus Services**

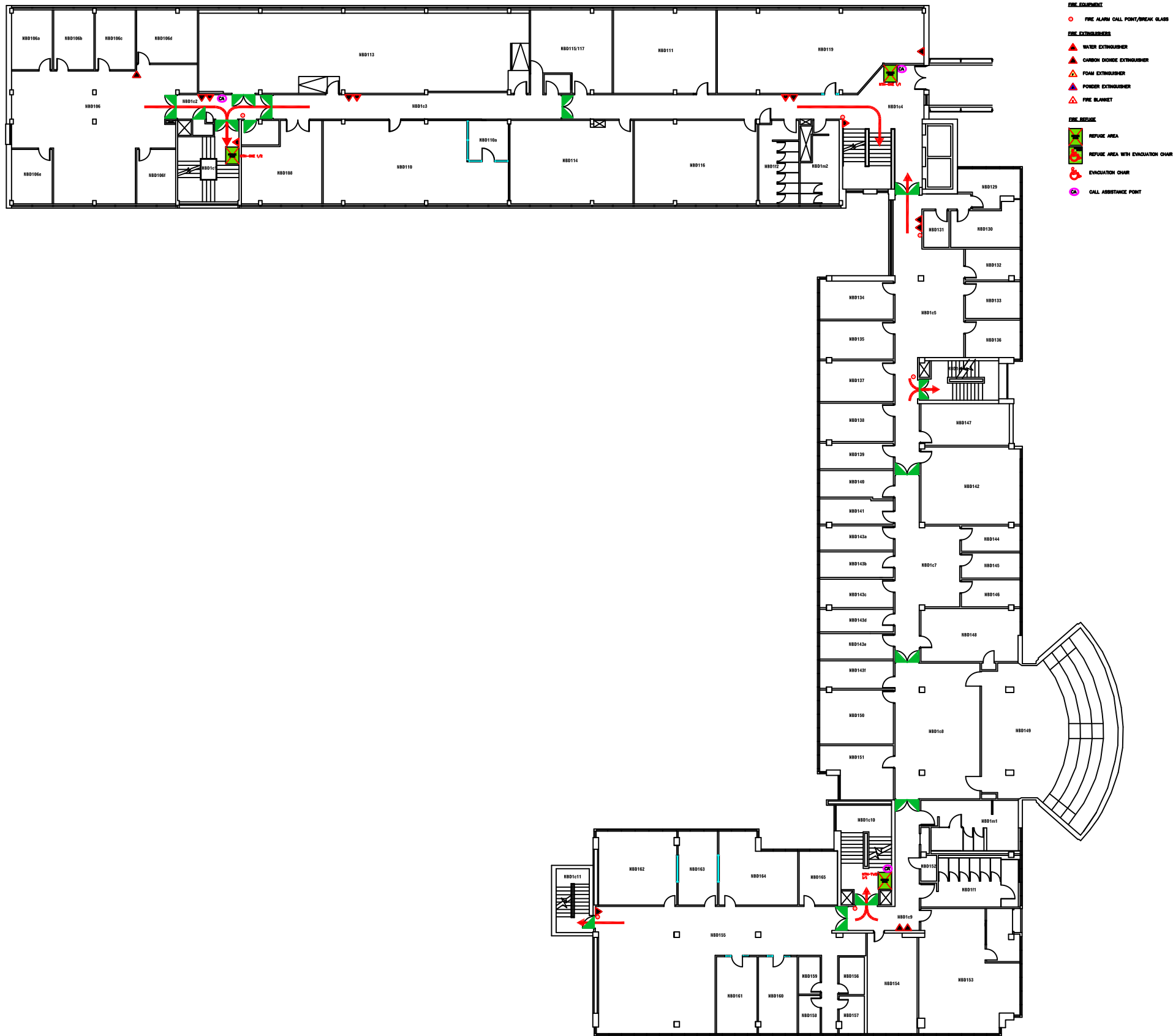
Pandon Building  
Camden Street  
Newcastle Upon Tyne  
NE1 8ST

Campus: CITY CENTRE  
Building: NORTHUMBERLAND  
Project: GROUND FLOOR LEVEL

Scale: NTS	Date: SEPT 2017
	Drawn:
	Issued:

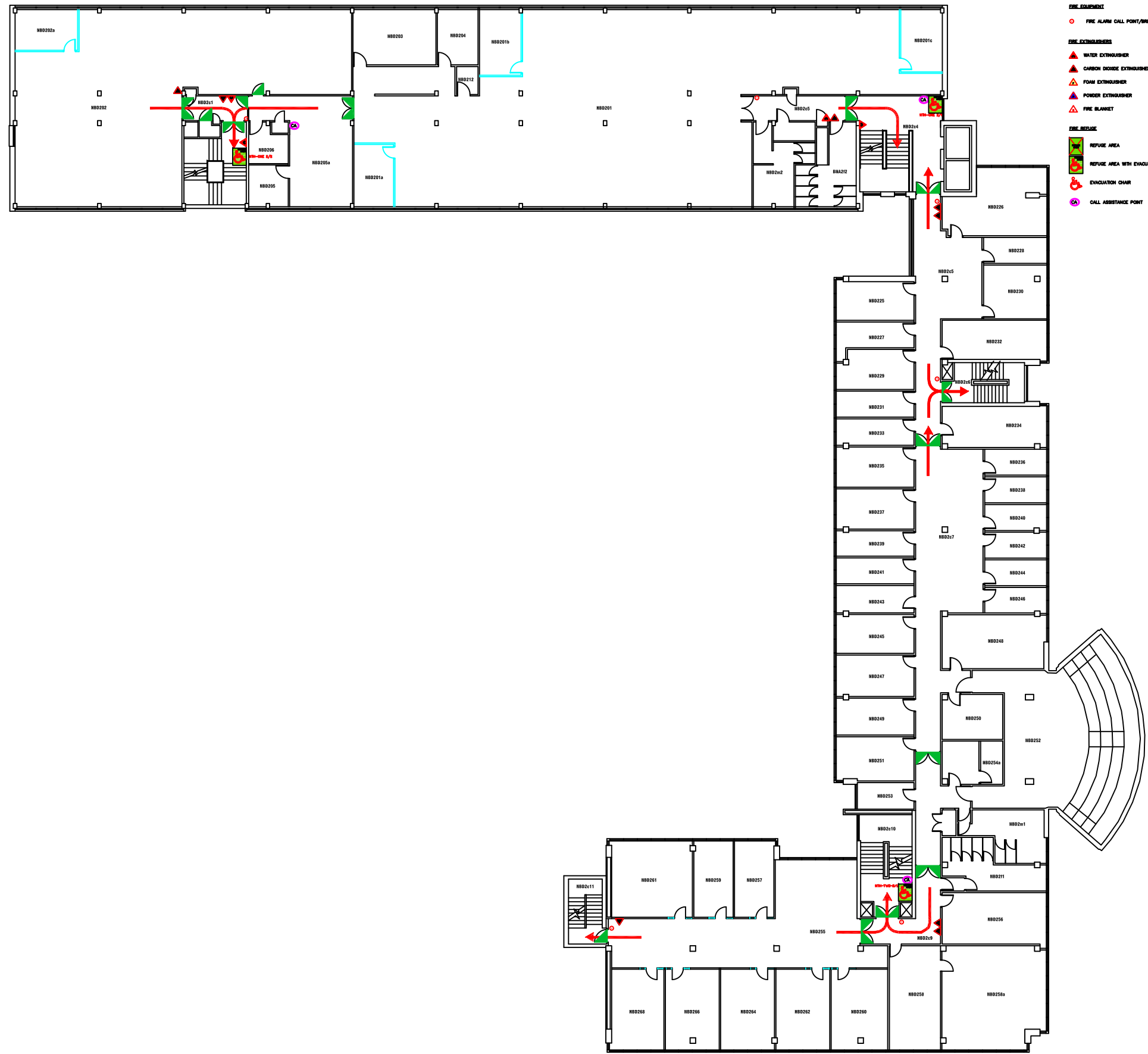
Job Reference No:

Drawing No:	Revision
-------------	----------



Campus: CITY CENTRE  
 Building: NORTHUMBERLAND  
 Project: FIRST FLOOR

Scale:	Date: JUNE 2017
NTS	Drawn:
	Issued:
Job Reference No:	
Drawing No:	Revision

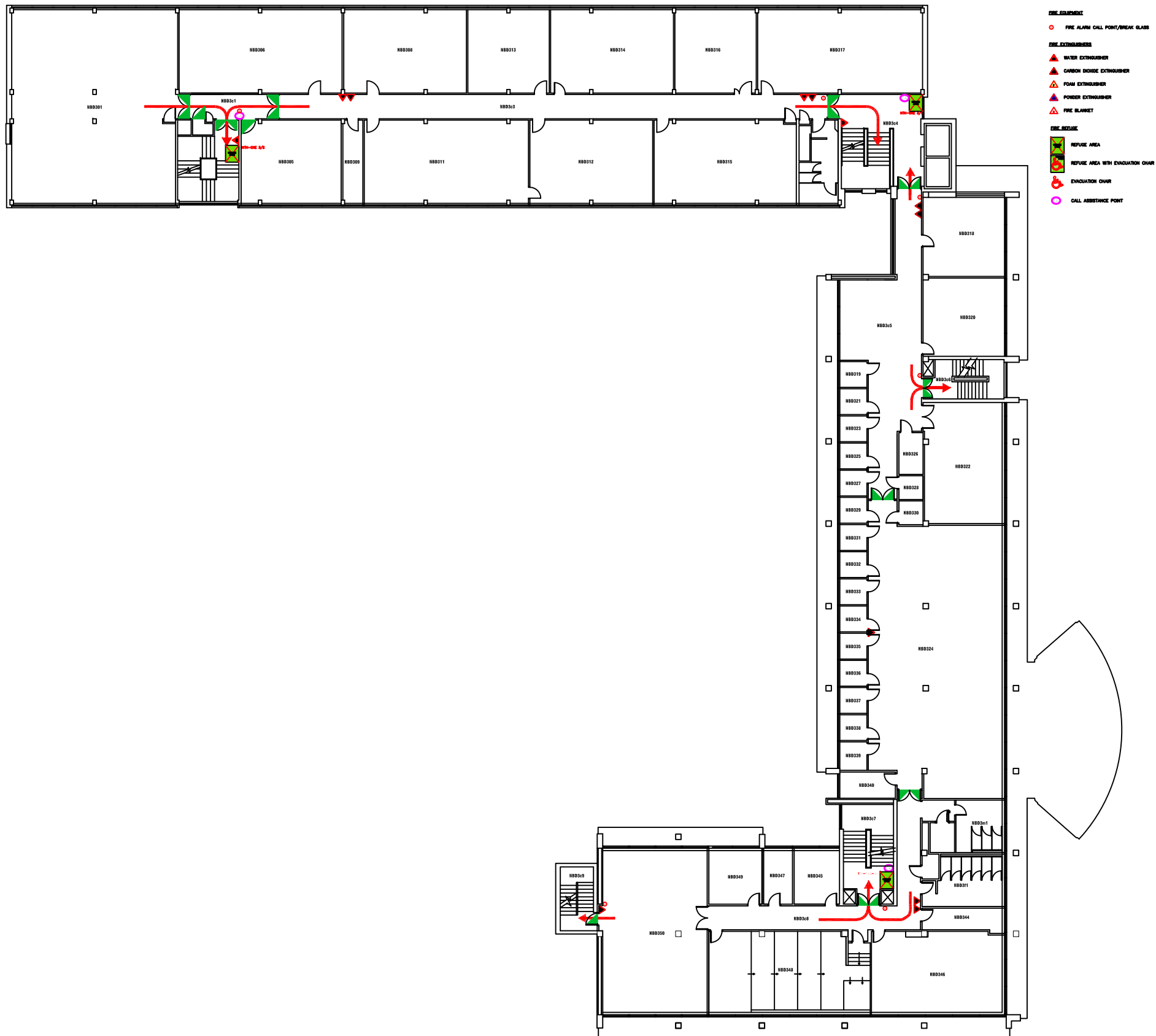


- FIRE EQUIPMENT**
- FIRE ALARM CALL POINT/BREAK GLASS
- FIRE EXTINGUISHERS**
- ▲ WATER EXTINGUISHER
  - ▲ CARBON DIOXIDE EXTINGUISHER
  - ▲ FOAM EXTINGUISHER
  - ▲ POWDER EXTINGUISHER
  - ▲ FIRE BLANKET
- FIRE BRIDGE**
- REFUGE AREA
  - REFUGE AREA WITH EVACUATION CHAIR
  - ♿ EVACUATION CHAIR
  - CALL ASSISTANCE POINT



Campus: CITY CENTRE  
Building: NORTHUMBERLAND  
Project: SECOND FLOOR

Scale: NTS	Date: JUNE 2017
	Drawn:
	Issued:
Job Reference No:	
Drawing No:	Revision



**Campus Services**

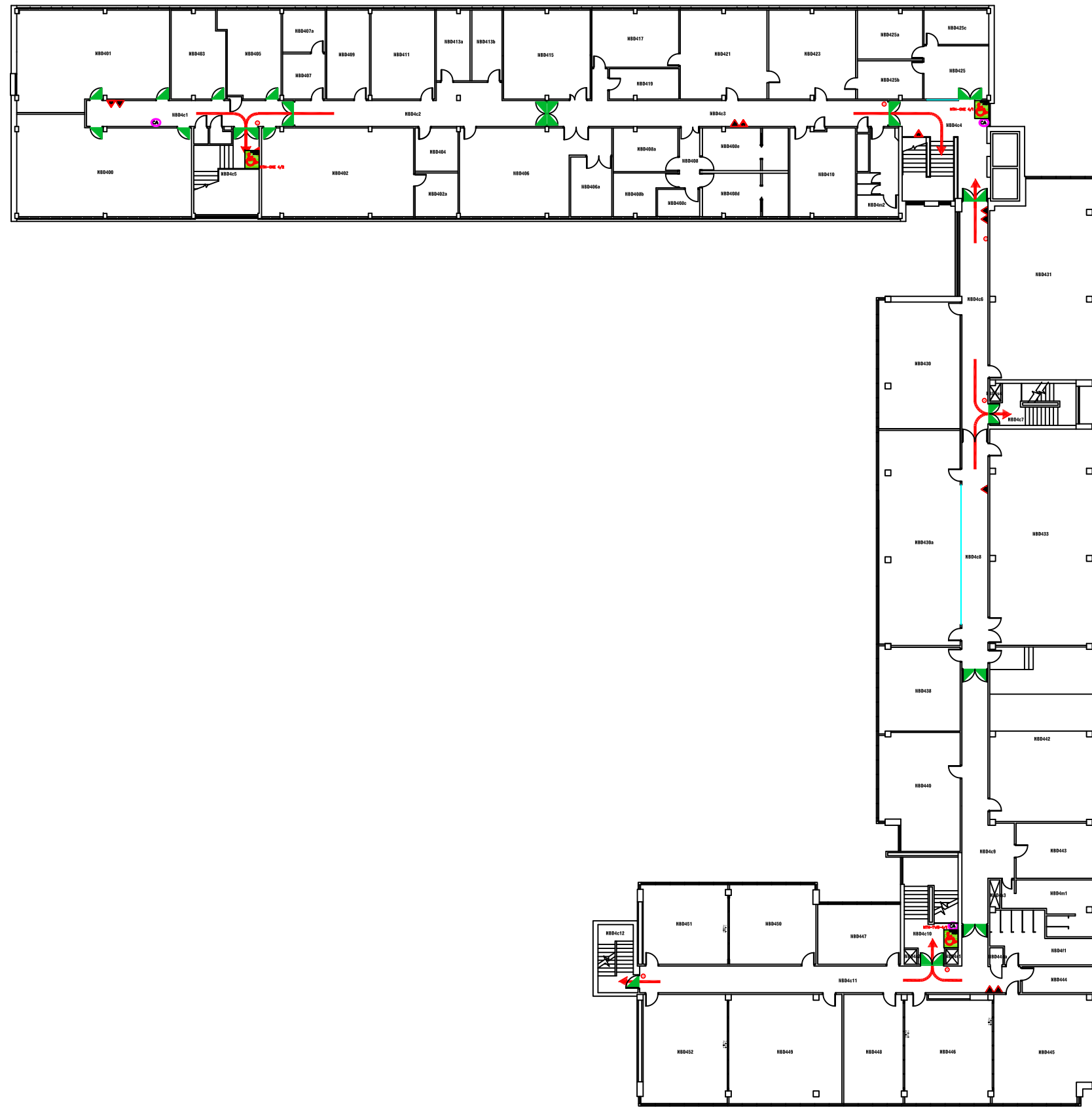
Pandon Building  
Camden Street  
Newcastle Upon Tyne  
NE1 8ST

Campus: CITY CENTRE  
Building: NORTHUMBERLAND B  
Project: THIRD FLOOR

Scale:	Date: AUG 2017
NTS	Drawn:
	Issued:

Job Reference No:

Drawing No:	Revision
-------------	----------



- FIRE EQUIPMENT**
- FIRE ALARM CALL POINT/BREAK GLASS
- FIRE EXTINGUISHERS**
- ▲ WATER EXTINGUISHER
  - ▲ CARBON DIOXIDE EXTINGUISHER
  - ▲ FOAM EXTINGUISHER
  - ▲ POWDER EXTINGUISHER
  - ▲ FIRE BLANKET
- FIRE REFUGE**
- REFUGE AREA
  - REFUGE AREA WITH EVACUATION CHAIR
  - EVACUATION CHAIR
  - CALL ASSISTANCE POINT



Campus: CITY CENTRE  
Building: NORTHUMBERLAND  
Project: FOURTH FLOOR

Scale:	Date: JUNE 2017
NTS	Drawn:
	Issued:
Job Reference No:	
Drawing No:	Revision