

FIRE EQUIPMENT

○ FIRE ALARM CALL POINT/BREAK GLASS

FIRE EXTINGUISHERS

▲ WATER EXTINGUISHER

▲ CARBON DIOXIDE EXTINGUISHER

▲ FOAM EXTINGUISHER

▲ POWDER EXTINGUISHER

▲ FIRE BLANKET

○ DRY RISER OUTLET

☒ HOSE REEL

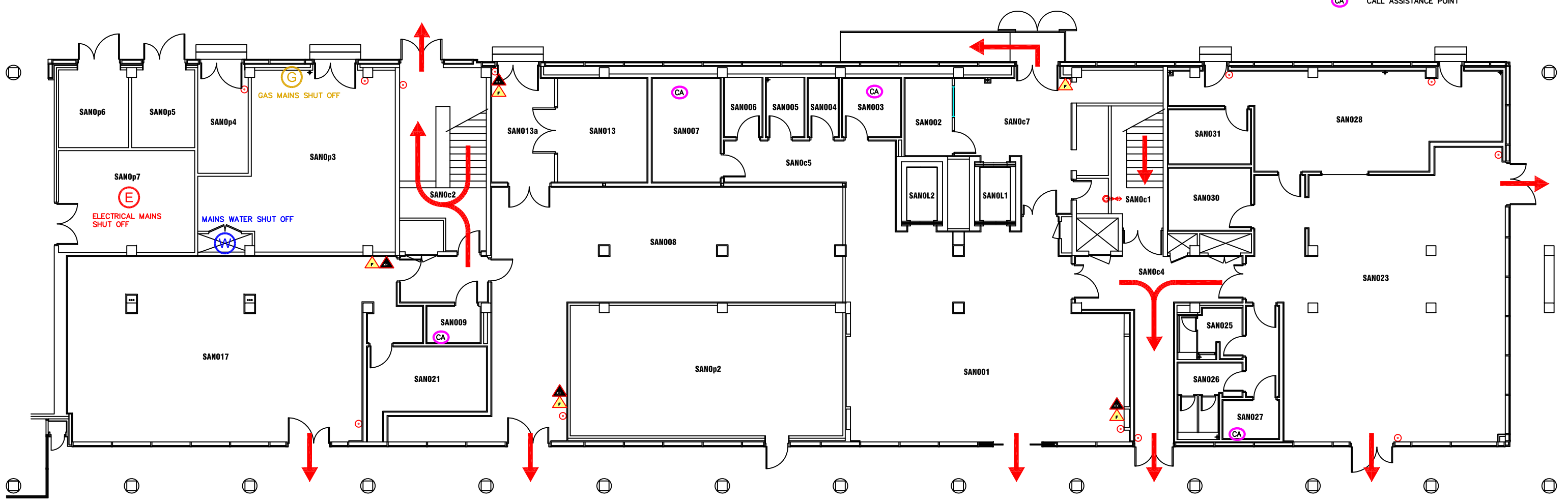
FIRE REFUGE

REFUGE AREA

REFUGE AREA WITH EVACUATION CHAIR

EVACUATION CHAIR

○ CA CALL ASSISTANCE POINT




northumbria
UNIVERSITY NEWCASTLE

Campus Services

Pandon Building
Camden Street
Newcastle Upon Tyne
NE1 8ST

Campus: CITY CENTRE
Building: SANDYFORD BUILDING
Project: GROUND FLOOR LEVEL

Scale: NTS	Date: AUG 2017
	Drawn:
	Issued:
Job Reference No:	
Drawing No:	Revision

FIRE EQUIPMENT

○ FIRE ALARM CALL POINT/BREAK GLASS

FIRE EXTINGUISHERS

▲ WATER EXTINGUISHER

▲ CARBON DIOXIDE EXTINGUISHER

▲ FOAM EXTINGUISHER

▲ POWDER EXTINGUISHER

▲ FIRE BLANKET

→ DRY RISER OUTLET

≡ HOSE REEL

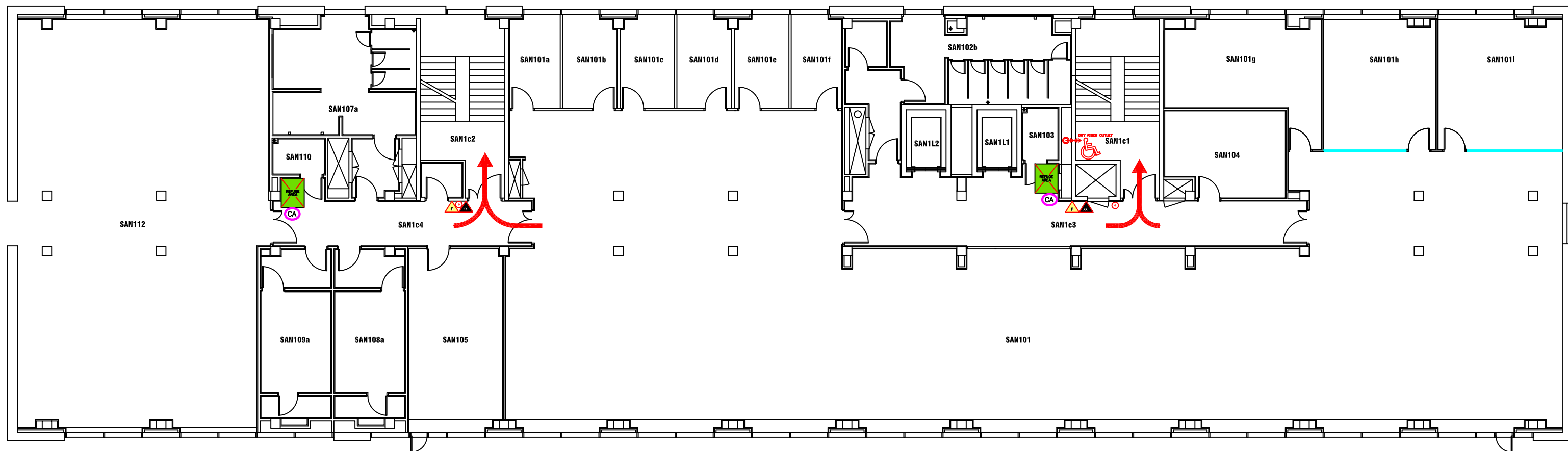
FIRE REFUGE

REFUGE AREA

REFUGE AREA WITH EVACUATION CHAIR

EVACUATION CHAIR

CA CALL ASSISTANCE POINT



Campus Services

Pandon Building
Camden Street
Newcastle Upon Tyne
NE1 8ST

Campus: CITY CENTRE
Building: SANDYFORD BUILDING
Project: FIRST FLOOR LEVEL

Scale: NTS Date: OCT 2017

Drawn:
Issued:

Job Reference No:

Drawing No: Revision

FIRE EQUIPMENT

○ FIRE ALARM CALL POINT/BREAK GLASS

FIRE EXTINGUISHERS

▲ WATER EXTINGUISHER

▲ CARBON DIOXIDE EXTINGUISHER

▲ FOAM EXTINGUISHER

▲ POWDER EXTINGUISHER

▲ FIRE BLANKET

○ DRY RISER OUTLET

○ HOSE REEL

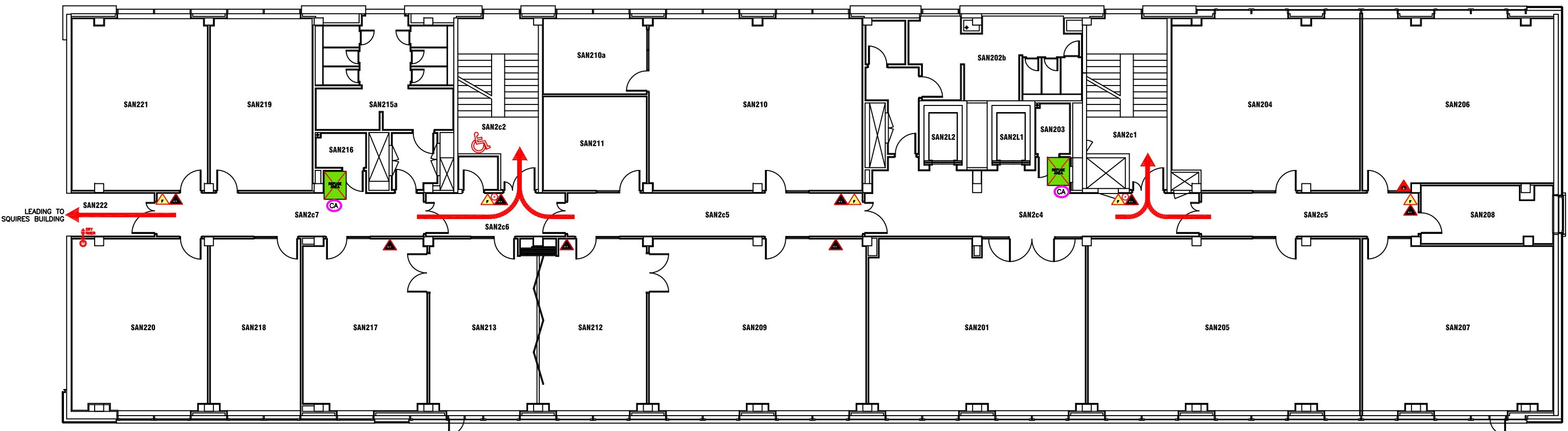
FIRE REFUGE

■ REFUGE AREA

■ REFUGE AREA WITH EVACUATION CHAIR

○ EVACUATION CHAIR

○ CALL ASSISTANCE POINT



Campus: CITY CENTRE
 Building: SANDYFORD BUILDING
 Project: SECOND FLOOR LEVEL

Scale:	Date: AUG 2017
NTS	Drawn:
	Issued:

Job Reference No:

Drawing No:	Revision
-------------	----------

FIRE EQUIPMENT

○ FIRE ALARM CALL POINT/BREAK GLASS

FIRE EXTINGUISHERS

▲ WATER EXTINGUISHER

▲ CARBON DIOXIDE EXTINGUISHER

▲ FOAM EXTINGUISHER

▲ POWDER EXTINGUISHER

▲ FIRE BLANKET

→ DRY RISER OUTLET

≡ HOSE REEL

FIRE REFUGE

☒ REFUGE AREA

☒ REFUGE AREA WITH EVACUATION CHAIR

♿ EVACUATION CHAIR

CA CALL ASSISTANCE POINT



Campus Services

Pandon Building
Camden Street
Newcastle Upon Tyne
NE1 8ST

Campus: CITY CENTRE
Building: SANDYFORD BUILDING
Project: THIRD FLOOR

Scale: Date: AUG 2017

NTS Drawn:

Issued:

Job Reference No:

Drawing No: Revision

FIRE EQUIPMENT

○ FIRE ALARM CALL POINT/BREAK GLASS

FIRE EXTINGUISHERS

▲ WATER EXTINGUISHER

▲ CARBON DIOXIDE EXTINGUISHER

▲ FOAM EXTINGUISHER

▲ POWDER EXTINGUISHER

▲ FIRE BLANKET

→ DRY RISER OUTLET

≡ HOSE REEL

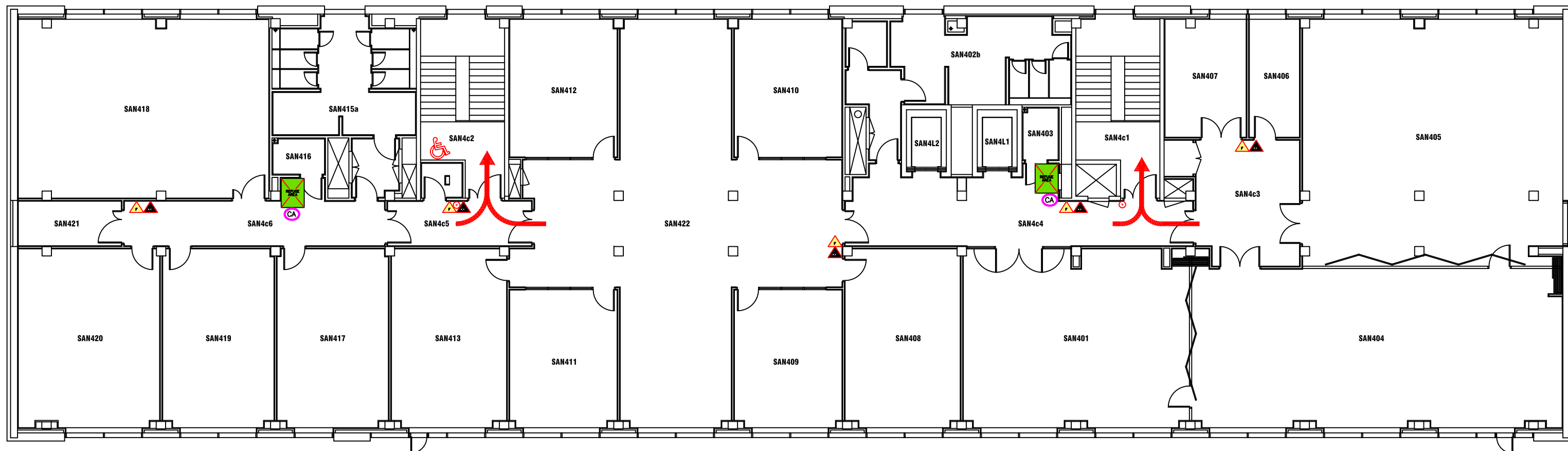
FIRE REFUGE

☒ REFUGE AREA

☒ REFUGE AREA WITH EVACUATION CHAIR

♿ EVACUATION CHAIR

CA CALL ASSISTANCE POINT



Campus Services

Pandon Building
Camden Street
Newcastle Upon Tyne
NE1 8ST

Campus: CITY CENTRE
Building: SANDYFORD BUILDING
Project: FOURTH FLOOR LEVEL

Scale:	Date: AUG 2017
NTS	Drawn:
	Issued:

Job Reference No:

Drawing No:	Revision
-------------	----------