

FIRE EQUIPMENT

○ FIRE ALARM CALL POINT/BREAK GLASS

FIRE EXTINGUISHERS

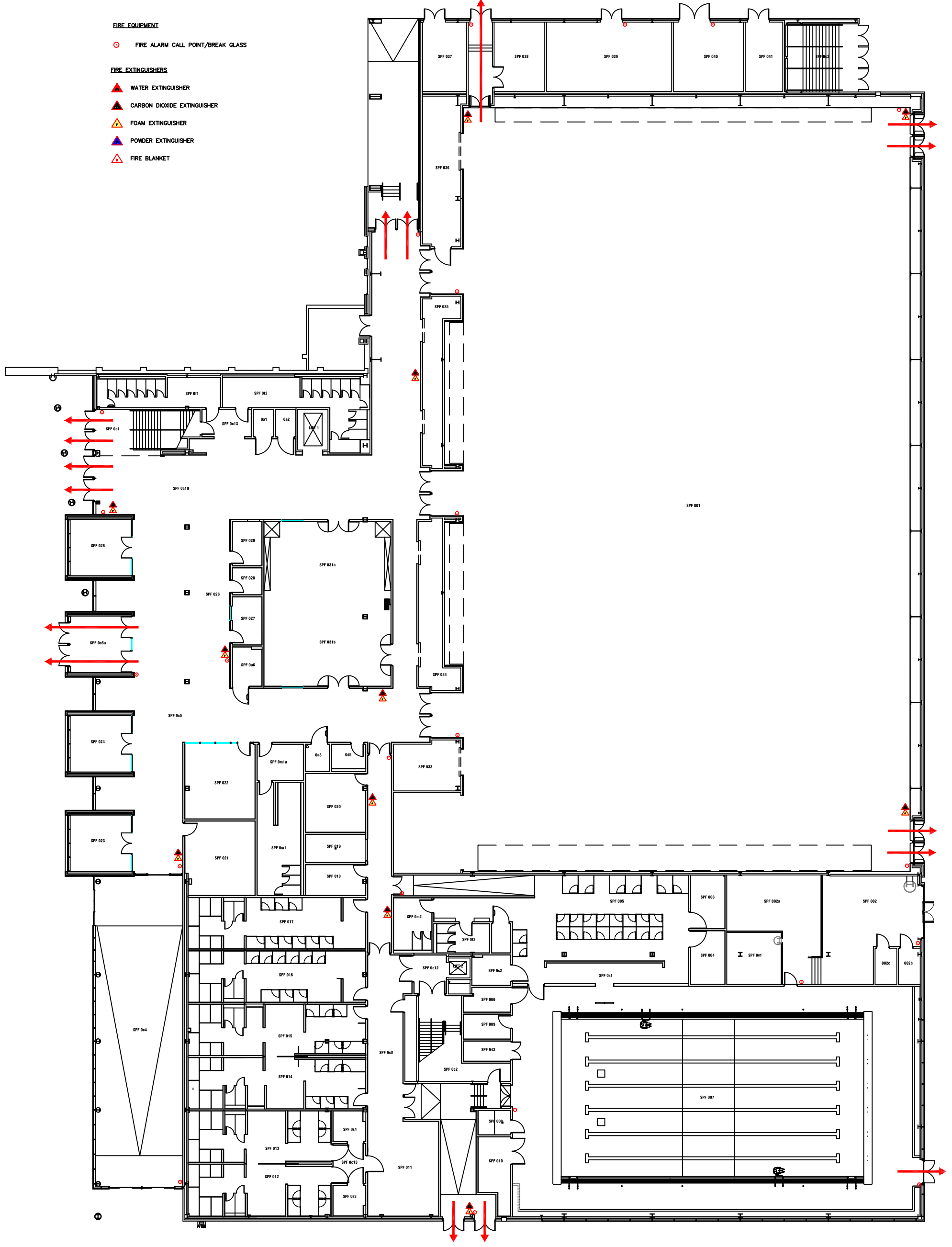
▲ WATER EXTINGUISHER

▲ CARBON DIOXIDE EXTINGUISHER

▲ FOAM EXTINGUISHER

▲ POWDER EXTINGUISHER

▲ FIRE BLANKET



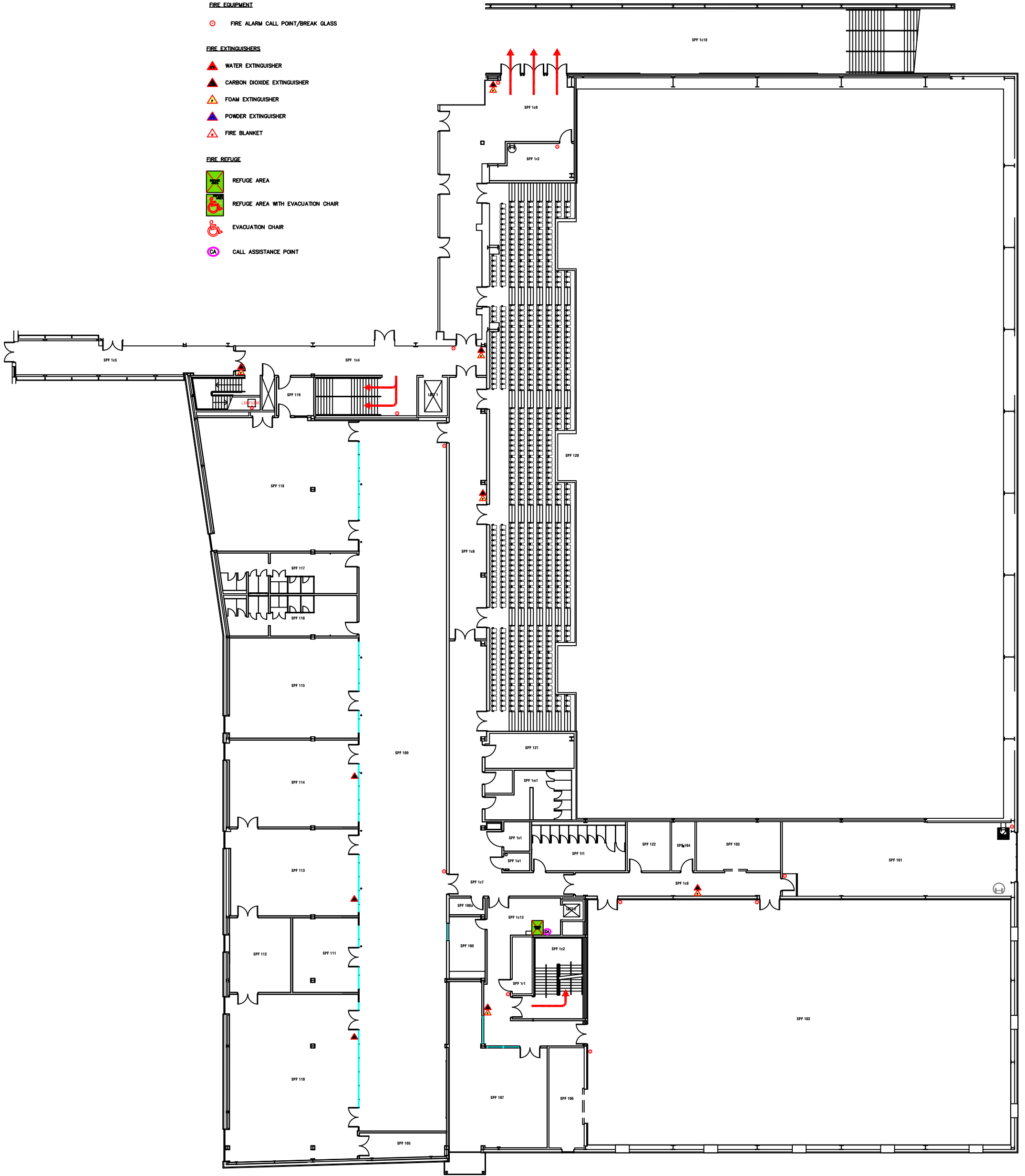
Campus: CITY CENTRE
 Building: SPORT CENTRAL
 Project: GROUND FLOOR

Scale: NTS
 Date: JUNE 2016
 Drawn:
 Issued:

Job Reference No:

Drawing No: Revision

- FIRE EQUIPMENT**
- FIRE ALARM CALL POINT/BREAK GLASS
- FIRE EXTINGUISHERS**
- ▲ WATER EXTINGUISHER
 - ▲ CARBON DIOXIDE EXTINGUISHER
 - ▲ FOAM EXTINGUISHER
 - ▲ POWDER EXTINGUISHER
 - ▲ FIRE BLANKET
- FIRE REFUGE**
- REFUGUE AREA
 - REFUGUE AREA WITH EVACUATION CHAIR
 - EVACUATION CHAIR
 - CALL ASSISTANCE POINT



Campus: CITY CENTRE
Building: SPORT CENTRAL
Project: FIRST FLOOR

Scale:	Date: JUNE 2017
NTS	Drawn:
	Issued:
Job Reference No:	
Drawing No:	Revision

FIRE EQUIPMENT

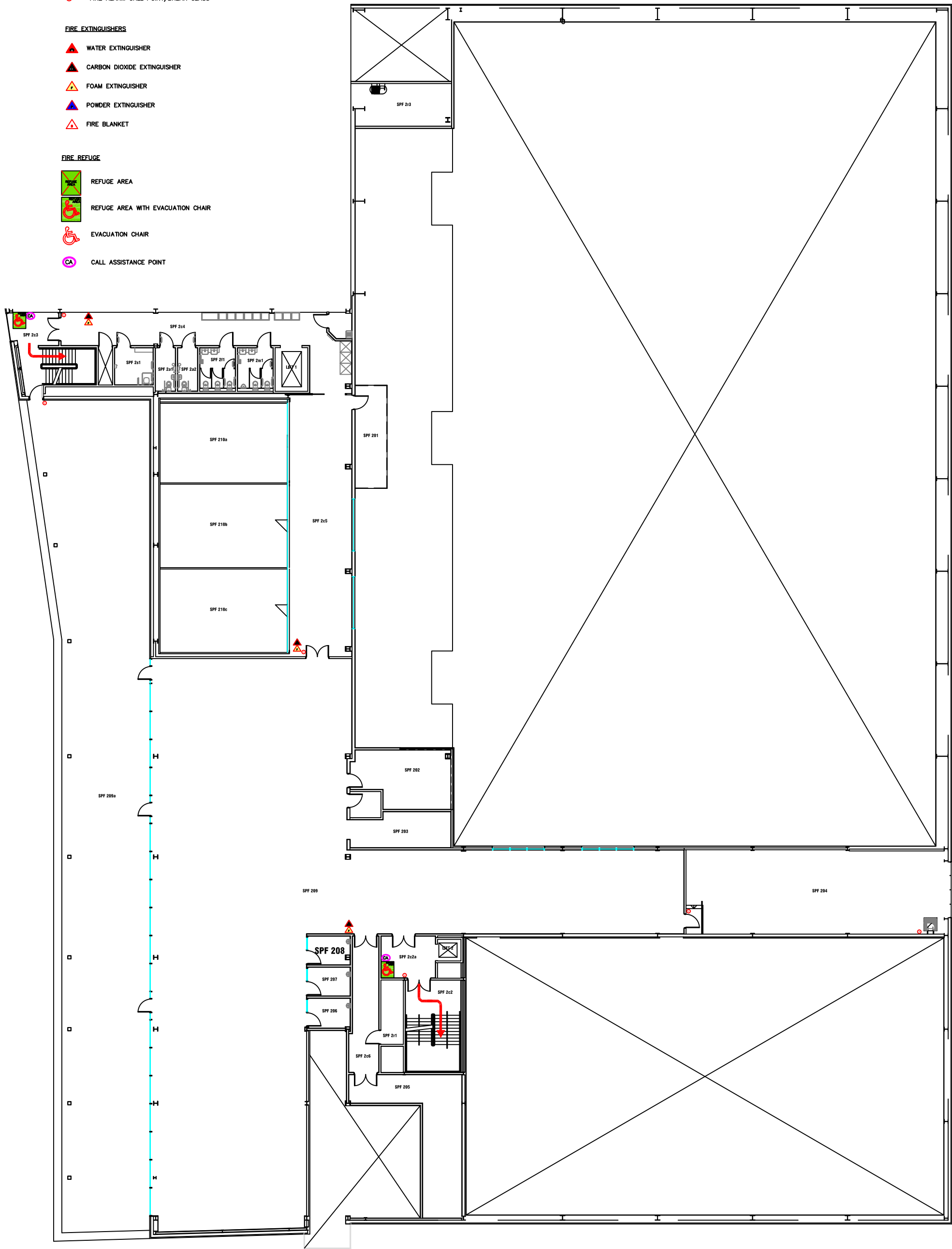
○ FIRE ALARM CALL POINT/BREAK GLASS

FIRE EXTINGUISHERS

- ▲ WATER EXTINGUISHER
- ▲ CARBON DIOXIDE EXTINGUISHER
- ▲ FOAM EXTINGUISHER
- ▲ POWDER EXTINGUISHER
- ▲ FIRE BLANKET

FIRE REFUGE

- REFUGE AREA
- REFUGE AREA WITH EVACUATION CHAIR
- EVACUATION CHAIR
- CALL ASSISTANCE POINT



Campus Services

Pandon Building
Camden Street
Newcastle Upon Tyne
NE1 8ST

Campus: CITY CENTRE
Building: SPORT CENTRAL
Project: SECOND FLOOR

Scale:	Date: JUNE 2017
NTS	Drawn:
	Issued:

Job Reference No:

Drawing No:	Revision
-------------	----------

FIRE EQUIPMENT

○ FIRE ALARM CALL POINT/BREAK GLASS

FIRE EXTINGUISHERS

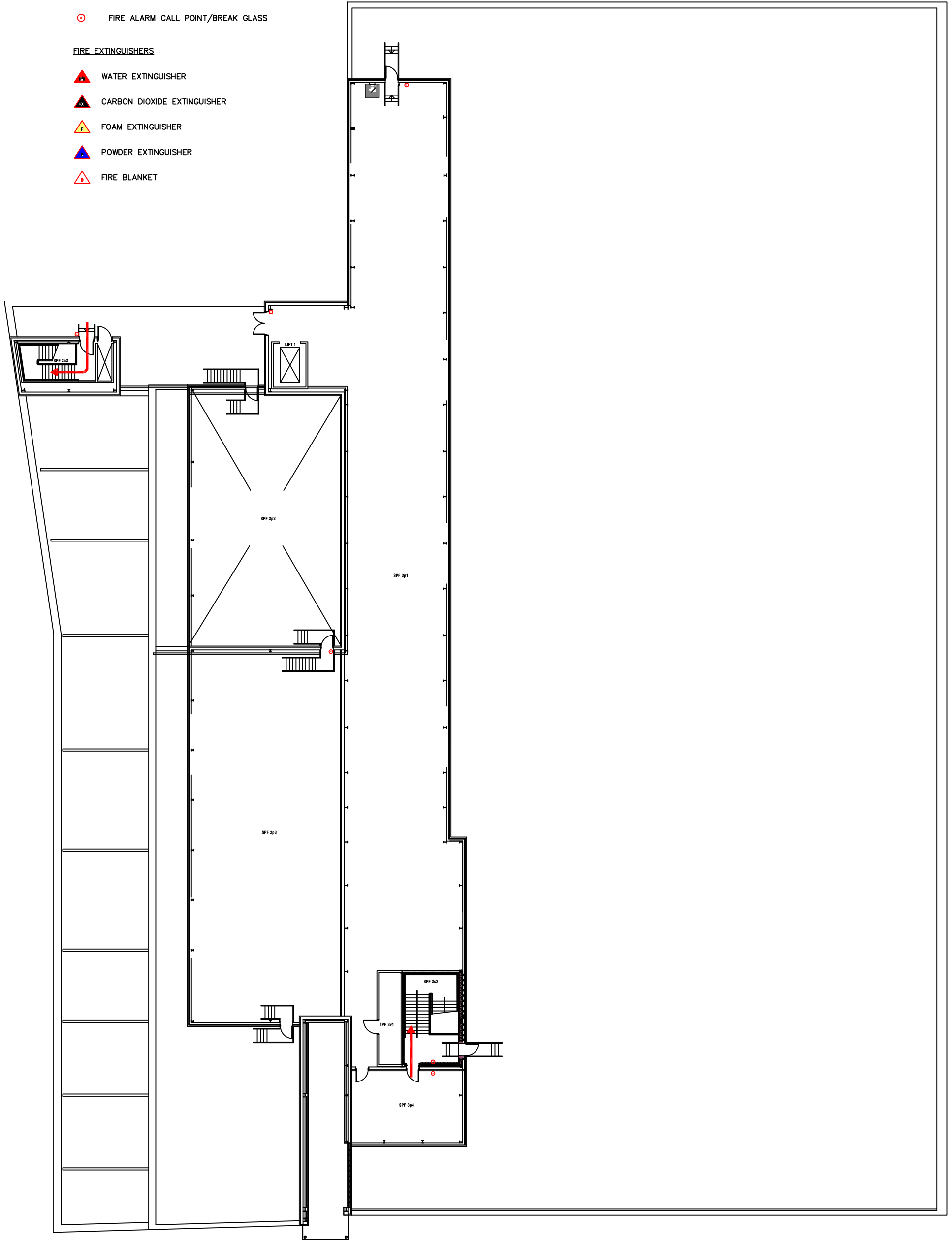
▲ WATER EXTINGUISHER

▲ CARBON DIOXIDE EXTINGUISHER

▲ FOAM EXTINGUISHER

▲ POWDER EXTINGUISHER

▲ FIRE BLANKET



Campus Services

Pandon Building
Camden Street
Newcastle Upon Tyne
NE1 8ST

Campus: CITY CENTRE
Building: SPORT CENTRAL

Project: THIRD FLOOR / ROOF

Scale:

NTS

Date: APR 2015

Drawn:

Issued:

Job Reference No:

Drawing No:

Revision