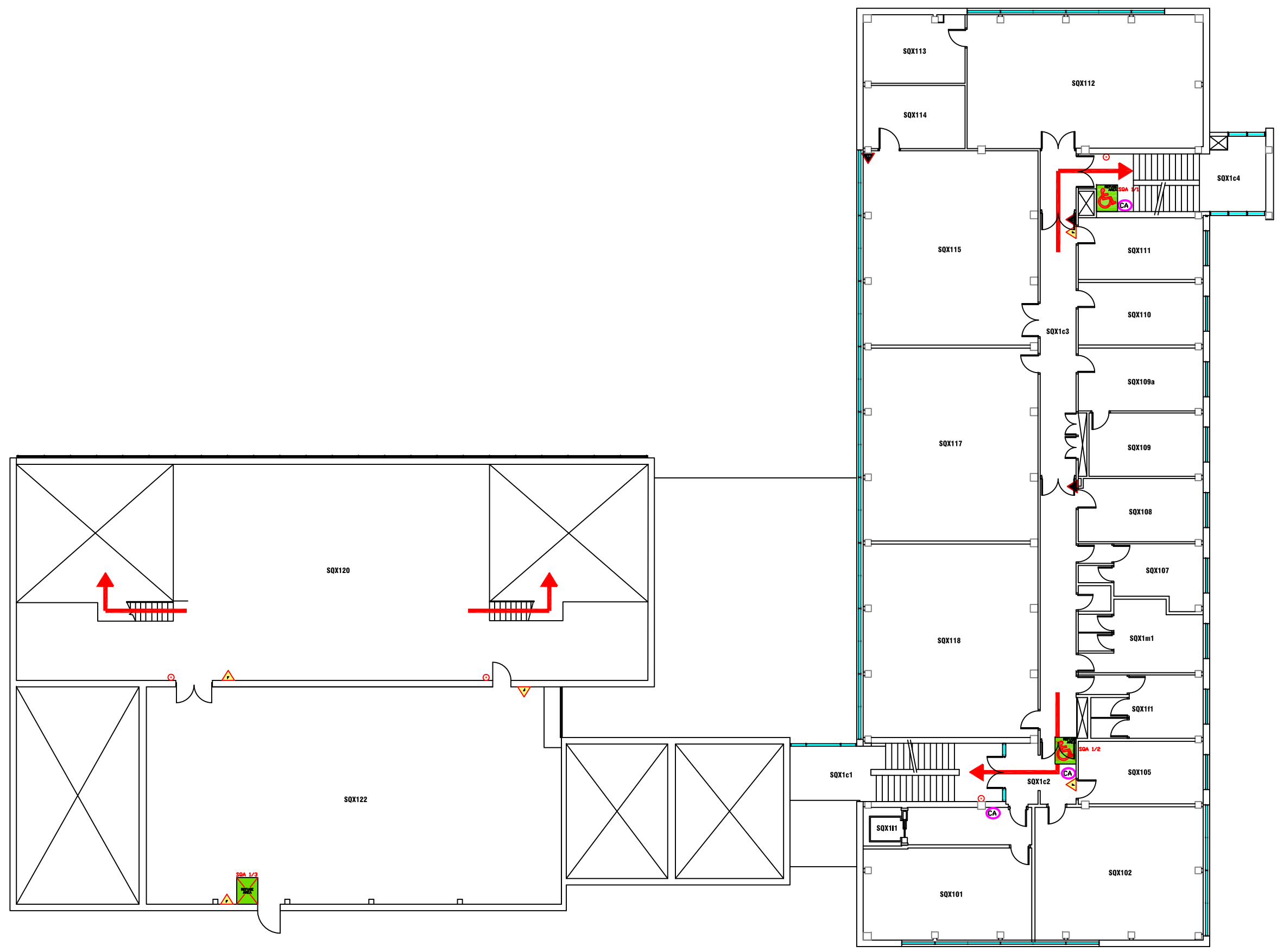


- FIRE EQUIPMENT**
- FIRE ALARM CALL POINT/BREAK GLASS
- FIRE EXTINGUISHERS**
- ▲ WATER EXTINGUISHER
 - ▲ CARBON DIOXIDE EXTINGUISHER
 - ▲ FOAM EXTINGUISHER
 - ▲ POWDER EXTINGUISHER
 - ▲ FIRE BLANKET
- G GAS SHUT OFF VALVE
- W WATER SHUT OFF TAP
- E ELECTRIC SHUT OFF SWITCH



Campus: CITY CENTRE
 Building: SQUIRES ANNEXE
 Project: GROUND FLOOR

Scale:	Date: OCT 2017
NTS	Drawn:
	Issued:
Job Reference No:	
Drawing No:	Revision

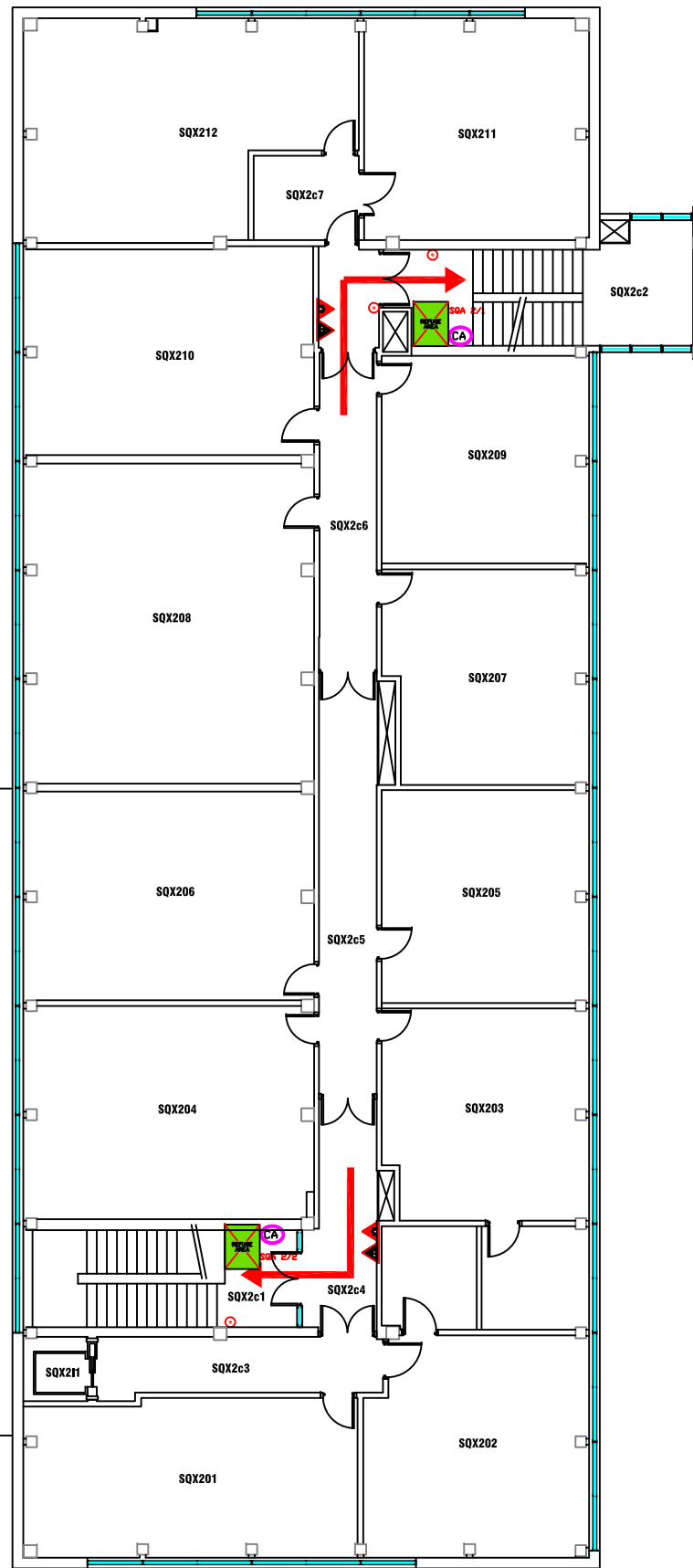


- FIRE EQUIPMENT**
- FIRE ALARM CALL POINT/BREAK GLASS
- FIRE EXTINGUISHERS**
- ▲ WATER EXTINGUISHER
 - ▲ CARBON DIOXIDE EXTINGUISHER
 - ▲ FOAM EXTINGUISHER
 - ▲ POWDER EXTINGUISHER
 - ▲ FIRE BLANKET
- FIRE REFUGE**
- REFUGE AREA
 - REFUGE AREA WITH EVACUATION CHAIR
 - EVACUATION CHAIR
 - CALL ASSISTANCE POINT



Campus: CITY CENTRE
 Building: SQUIRES ANNEXE
 Project: FIRST FLOOR

Scale:	Date: SEPT 2017
NTS	Drawn:
	Issued:
Job Reference No:	
Drawing No:	Revision



FIRE EQUIPMENT

○ FIRE ALARM CALL POINT/BREAK GLASS

FIRE EXTINGUISHERS

- ▲ WATER EXTINGUISHER
- ▲ CARBON DIOXIDE EXTINGUISHER
- ▲ FOAM EXTINGUISHER
- ▲ POWDER EXTINGUISHER
- ▲ FIRE BLANKET

FIRE REFUGE

- REFUGE AREA
- REFUGE AREA WITH EVACUATION CHAIR
- EVACUATION CHAIR
- CALL ASSISTANCE POINT



Campus Services

Pandon Building
Camden Street
Newcastle Upon Tyne
NE1 8ST

Campus: CITY CENTRE
Building: SQUIRES ANNEXE
Project: SECOND FLOOR

Scale: NTS	Date: SEPT 2017
	Drawn:
	Issued:

Job Reference No:

Drawing No:	Revision
-------------	----------