

- FIRE EQUIPMENT**
- FIRE ALARM CALL POINT/BREAK GLASS
- FIRE EXTINGUISHERS**
- ▲ WATER EXTINGUISHER
 - ▲ CARBON DIOXIDE EXTINGUISHER
 - ▲ FOAM EXTINGUISHER
 - ▲ POWDER EXTINGUISHER
 - ▲ FIRE BLANKET
- GAS SHUT OFF VALVE
- WATER SHUT OFF TAP
- ELECTRIC SHUT OFF SWITCH

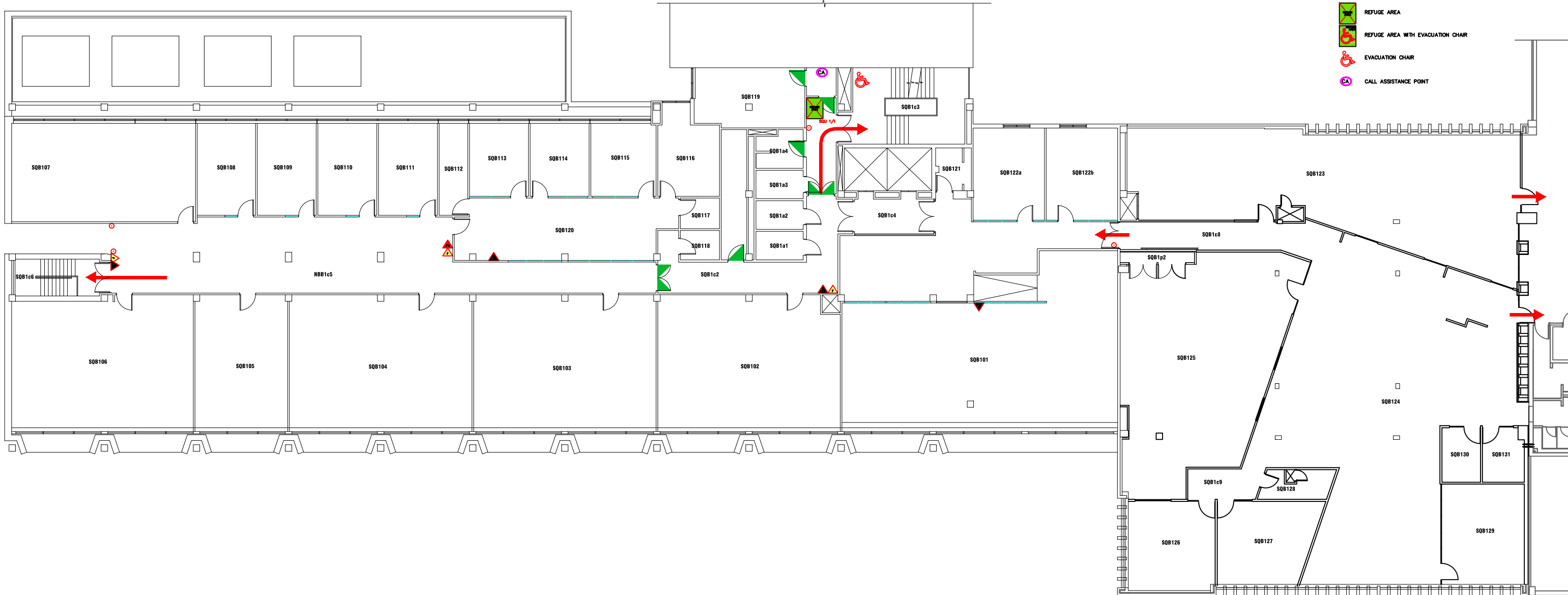
northumbria
UNIVERSITY **NEWCASTLE**

Campus Services

Pandon Building
Camden Street
Newcastle Upon Tyne
NE1 8ST

Campus: CITY CENTRE
Building: SQUIRES BUILDING
Project: GROUND FLOOR

Scale:	Date: SEPT 2017
NTS	Drawn:
	Issued:
Job Reference No:	
Drawing No:	Revision



- FIRE EQUIPMENT**
- FIRE ALARM CALL POINT/BREAK GLASS
- FIRE EXTINGUISHERS**
- ▲ WATER EXTINGUISHER
 - ▲ CARBON DIOXIDE EXTINGUISHER
 - ▲ FOAM EXTINGUISHER
 - ▲ POWDER EXTINGUISHER
 - ▲ FIRE BLANKET
- FIRE REFUGE**
- REFUGE AREA
 - REFUGE AREA WITH EVACUATION CHAIR
 - ♿ EVACUATION CHAIR
 - CA CALL ASSISTANCE POINT



Campus Services

Pandon Building
Camden Street
Newcastle Upon Tyne
NE1 8ST

Campus: CITY CENTRE
Building: SQUIRES BUILDING
Project: FIRST FLOOR

Scale:	Date: OCT 2017
NTS	Drawn:
	Issued:

Job Reference No:

Drawing No:	Revision
-------------	----------

FIRE EQUIPMENT

○ FIRE ALARM CALL POINT/BREAK GLASS

FIRE EXTINGUISHERS

▲ WATER EXTINGUISHER

▲ CARBON DIOXIDE EXTINGUISHER

▲ FOAM EXTINGUISHER

▲ POWDER EXTINGUISHER

▲ FIRE BLANKET

FIRE REFUGE

REFUGE AREA

REFUGE AREA WITH EVACUATION CHAIR

EVACUATION CHAIR

CALL ASSISTANCE POINT



Campus Services

Pandon Building
Camden Street
Newcastle Upon Tyne
NE1 8ST

Campus: CITY CENTRE
Building: SQUIRES BUILDING
Project: SECOND FLOOR

Scale: NTS Date: SEPT 2017

Drawn:

Issued:

Job Reference No:

Drawing No:

Revision

FIRE EQUIPMENT

○ FIRE ALARM CALL POINT/BREAK GLASS

FIRE EXTINGUISHERS

▲ WATER EXTINGUISHER

▲ CARBON DIOXIDE EXTINGUISHER

▲ FOAM EXTINGUISHER

▲ POWDER EXTINGUISHER

▲ FIRE BLANKET

FIRE REFUGE

REFUGE AREA

REFUGE AREA WITH EVACUATION CHAIR

EVACUATION CHAIR

CALL ASSISTANCE POINT



Campus: CITY CENTRE
 Building: SQUIRES BUILDING
 Project: THIRD FLOOR

Scale:	Date: SEPT 2017
NTS	Drawn:
	Issued:
Job Reference No:	
Drawing No:	Revision

FIRE EQUIPMENT

○ FIRE ALARM CALL POINT/BREAK GLASS

FIRE EXTINGUISHERS

▲ WATER EXTINGUISHER

▲ CARBON DIOXIDE EXTINGUISHER

▲ FOAM EXTINGUISHER

▲ POWDER EXTINGUISHER

▲ FIRE BLANKET

FIRE REFUGE

REFUGE AREA

REFUGE AREA WITH EVACUATION CHAIR

EVACUATION CHAIR

CALL ASSISTANCE POINT




northumbria
UNIVERSITY NEWCASTLE

Campus Services

Pandon Building
Camden Street
Newcastle Upon Tyne
NE1 8ST

Campus: CITY CENTRE
Building: SQUIRES BUILDING
Project: FOURTH FLOOR

Scale:	Date: FEB 2017
NTS	Drawn:
	Issued:
Job Reference No:	
Drawing No:	Revision



FIRE EQUIPMENT

- FIRE ALARM CALL POINT/BREAK GLASS

FIRE EXTINGUISHERS

- WATER EXTINGUISHER
- CARBON DIOXIDE EXTINGUISHER
- FOAM EXTINGUISHER
- POWDER EXTINGUISHER
- FIRE BLANKET

FIRE REFUGE

- REFUGE AREA
- REFUGE AREA WITH EVACUATION CHAIR
- EVACUATION CHAIR
- CALL ASSISTANCE POINT

northumbria
UNIVERSITY **NEWCASTLE**

Campus Services

Pandon Building
Camden Street
Newcastle Upon Tyne
NE1 8ST

Campus: CITY CENTRE
Building: SQUIRES BUILDING
Project: FIFTH FLOOR

Scale: NTS	Date: SEPT 2017
	Drawn:
	Issued:
Job Reference No:	
Drawing No:	Revision