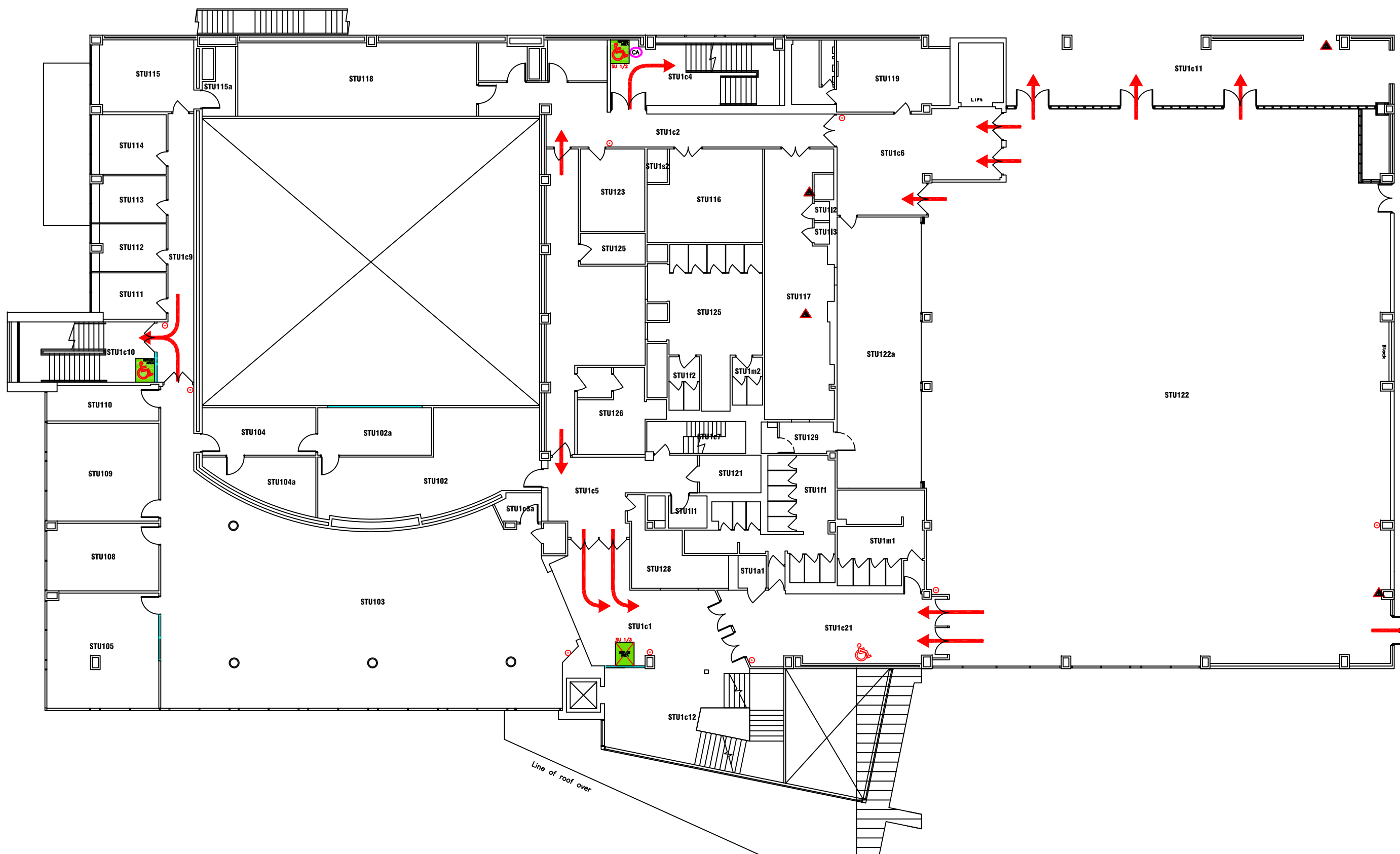


- FIRE EQUIPMENT**
- FIRE ALARM CALL POINT/BREAK GLASS
- FIRE EXTINGUISHERS**
- ▲ WATER EXTINGUISHER
 - ▲ CARBON DIOXIDE EXTINGUISHER
 - ▲ FOAM EXTINGUISHER
 - ▲ POWDER EXTINGUISHER
 - ▲ FIRE BLANKET
- Ⓞ GAS SHUT OFF VALVE
- Ⓜ WATER SHUT OFF TAP
- ⓔ ELECTRIC SHUT OFF SWITCH



Campus: CITY CENTRE
 Building: STUDENT UNION
 Project: GROUND FLOOR

Scale: NTS	Date: SEPT 2017
	Drawn:
	Issued:
Job Reference No:	
Drawing No:	Revision



- FIRE EQUIPMENT**
- FIRE ALARM CALL POINT/BREAK GLASS
- FIRE EXTINGUISHERS**
- ▲ WATER EXTINGUISHER
 - ▲ CARBON DIOXIDE EXTINGUISHER
 - ▲ FOAM EXTINGUISHER
 - ▲ POWDER EXTINGUISHER
 - ▲ FIRE BLANKET
- FIRE REFUGE**
- REFUGE AREA
 - REFUGE AREA WITH EVACUATION CHAIR
 - ♿ EVACUATION CHAIR
 - CA CALL ASSISTANCE POINT

Line of roof over

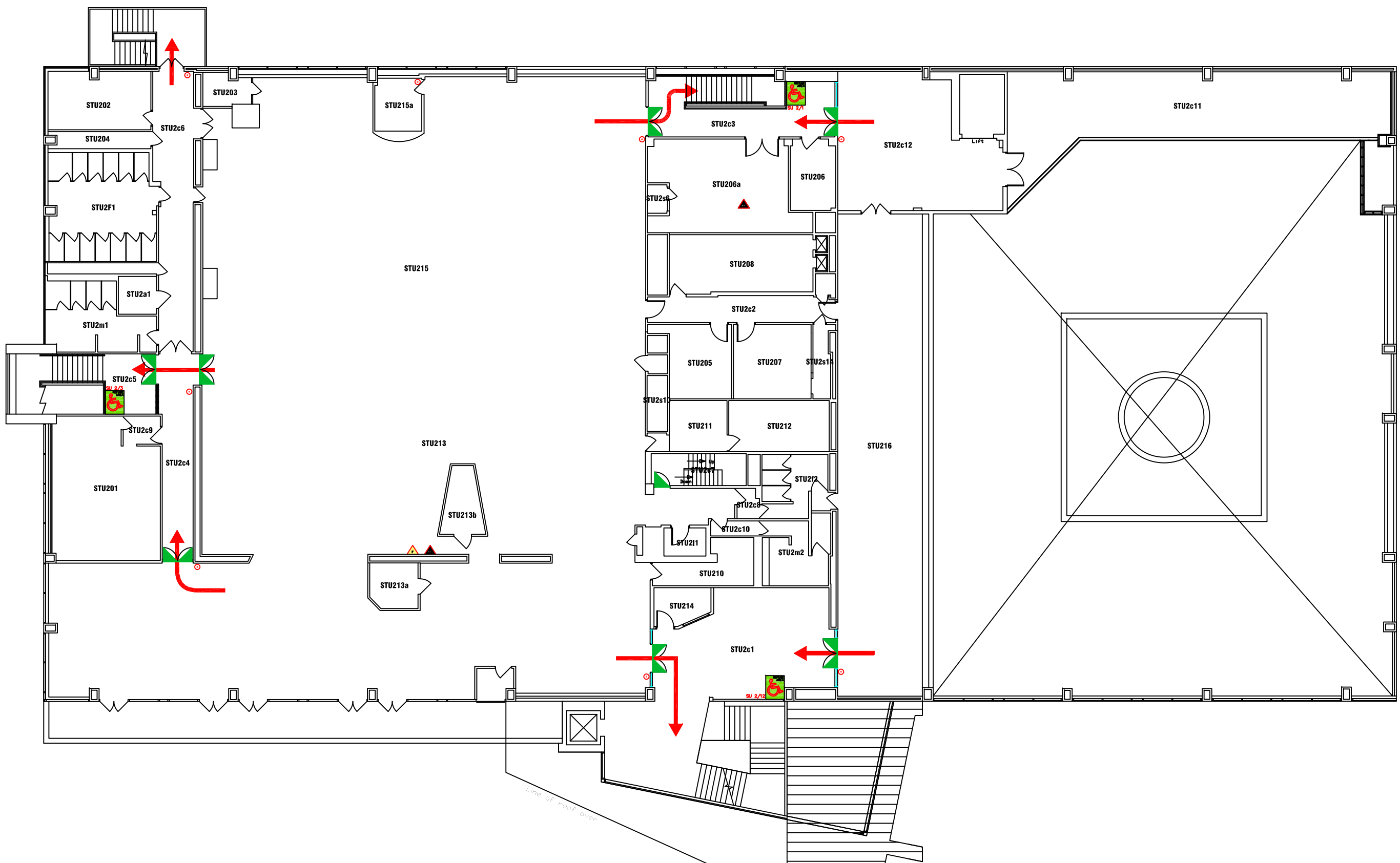
northumbria
UNIVERSITY NEWCASTLE

Campus Services

Pandon Building
Camden Street
Newcastle Upon Tyne
NE1 8ST

Campus: CITY CENTRE
Building: STUDENT UNION
Project: FIRST FLOOR

Scale: NTS	Date: SEPT 2017
	Drawn:
	Issued:
Job Reference No:	
Drawing No:	Revision



- FIRE EQUIPMENT**
- FIRE ALARM CALL POINT/BREAK GLASS
- FIRE EXTINGUISHERS**
- ▲ WATER EXTINGUISHER
 - ▲ CARBON DIOXIDE EXTINGUISHER
 - ▲ FOAM EXTINGUISHER
 - ▲ POWDER EXTINGUISHER
 - ▲ FIRE BLANKET
- FIRE REFUGE**
- REFUGE AREA
 - REFUGE AREA WITH EVACUATION CHAIR
 - ♿ EVACUATION CHAIR
 - CALL ASSISTANCE POINT



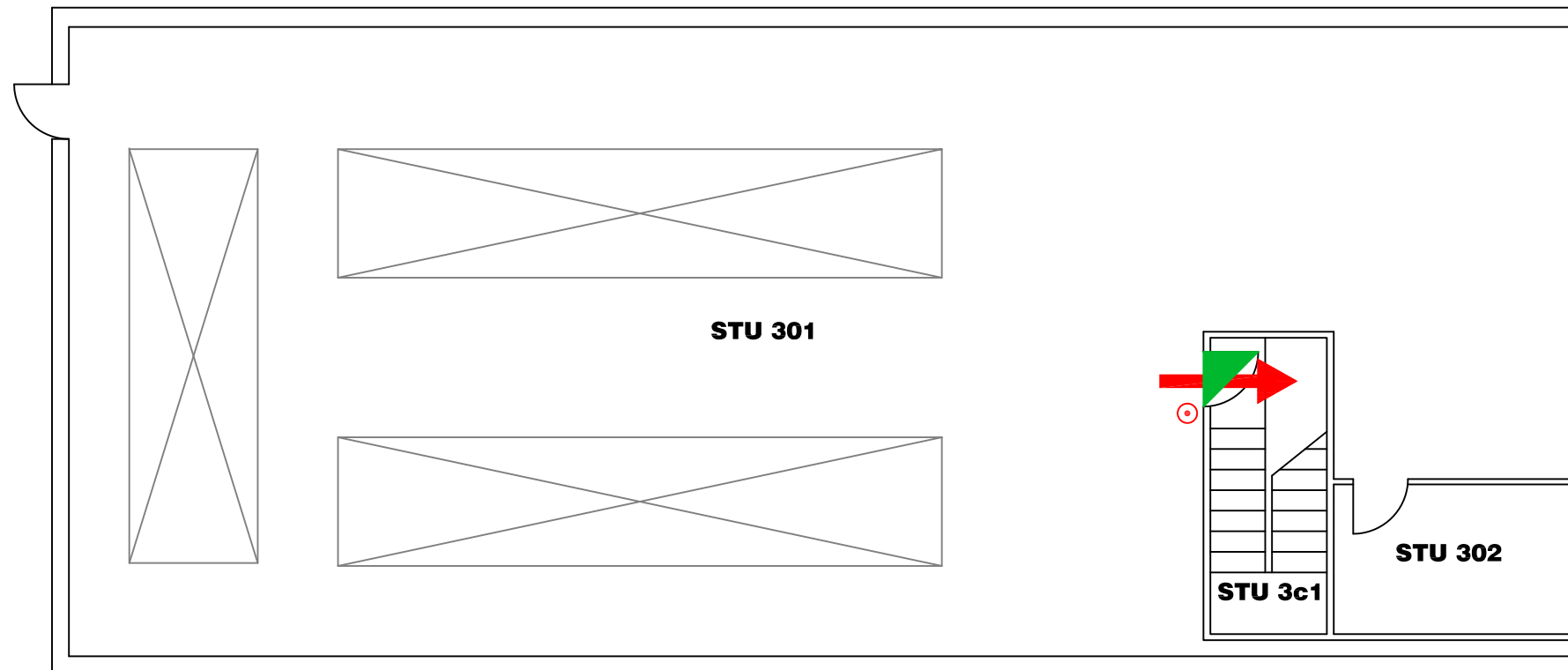
northumbria
UNIVERSITY NEWCASTLE

Campus Services

Pandon Building
Camden Street
Newcastle Upon Tyne
NE1 8ST

Campus: CITY CENTRE
Building: STUDENT UNION
Project: SECOND FLOOR

Scale: NTS	Date: SEPT 2017
	Drawn:
	Issued:
Job Reference No:	
Drawing No:	Revision



FIRE EQUIPMENT

⊙ FIRE ALARM CALL POINT/BREAK GLASS



Campus Services

Pandon Building
Camden Street
Newcastle Upon Tyne
NE1 8ST

Campus: CITY CENTRE
Building: STUDENT UNION

Project: THIRD FLOOR
PLANTROOM

Scale: NTS Date: APR 2015

Drawn:

Issued:

Job Reference No:

Drawing No:

Revision