

- FIRE EQUIPMENT**
- FIRE ALARM CALL POINT/BREAK GLASS
- FIRE EXTINGUISHERS**
- ▲ WATER EXTINGUISHER
  - ▲ CARBON DIOXIDE EXTINGUISHER
  - ▲ FOAM EXTINGUISHER
  - ▲ POWDER EXTINGUISHER
  - ▲ FIRE BLANKET
- GAS SHUT OFF VALVE
- WATER SHUT OFF TAP
- ELECTRIC SHUT OFF SWITCH

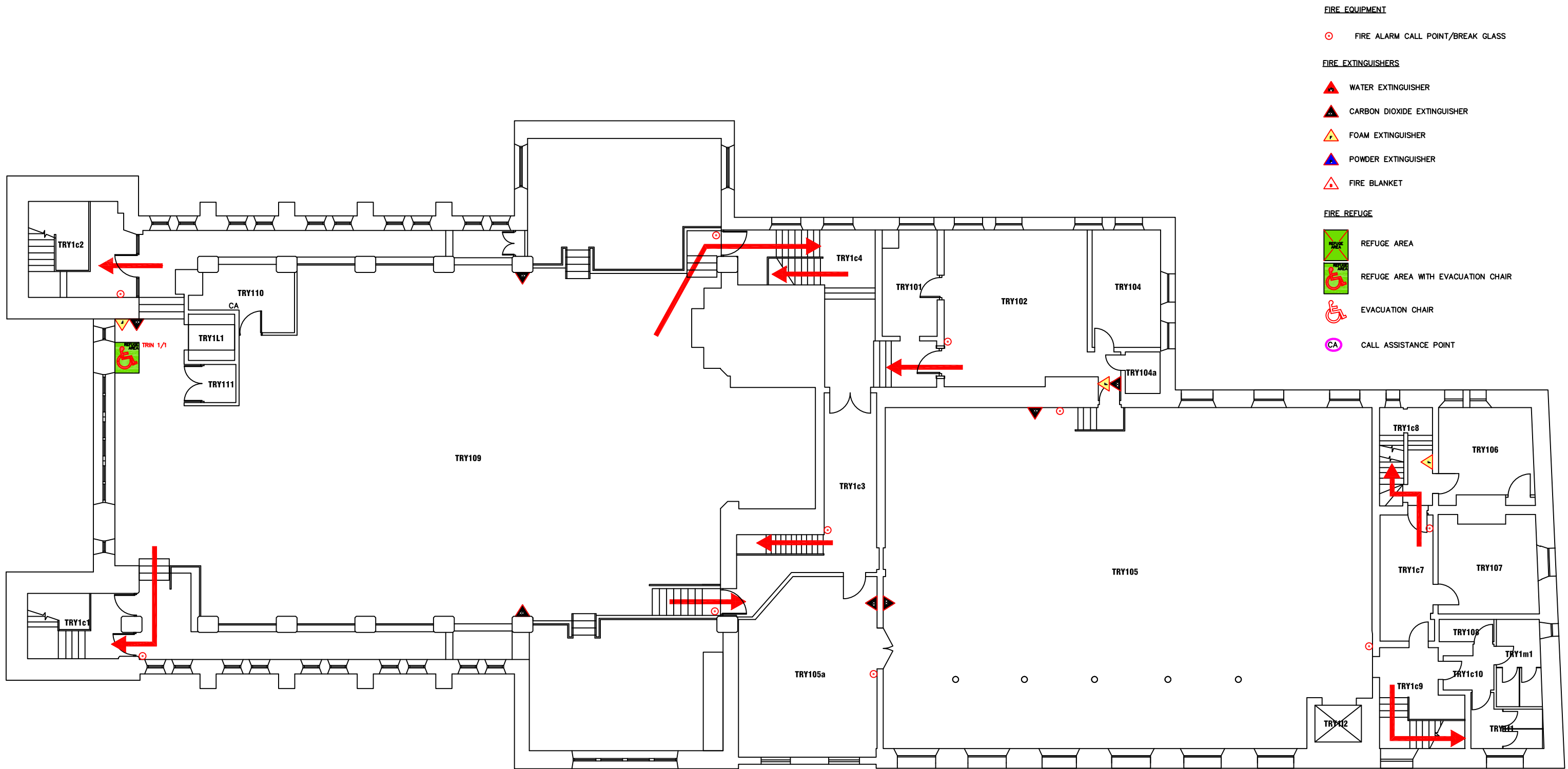


Campus: CITY CENTRE  
 Building: TRINITY BUILDING  
 Project: GROUND FLOOR

|        |                |
|--------|----------------|
| Scale: | Date: AUG 2017 |
| NTS    | Drawn:         |
|        | Issued:        |

Job Reference No:

|             |          |
|-------------|----------|
| Drawing No: | Revision |
|-------------|----------|



- FIRE EQUIPMENT**
- FIRE ALARM CALL POINT/BREAK GLASS
- FIRE EXTINGUISHERS**
- WATER EXTINGUISHER
  - CARBON DIOXIDE EXTINGUISHER
  - FOAM EXTINGUISHER
  - POWDER EXTINGUISHER
  - FIRE BLANKET
- FIRE REFUGE**
- REFUGE AREA
  - REFUGE AREA WITH EVACUATION CHAIR
  - EVACUATION CHAIR
  - CALL ASSISTANCE POINT

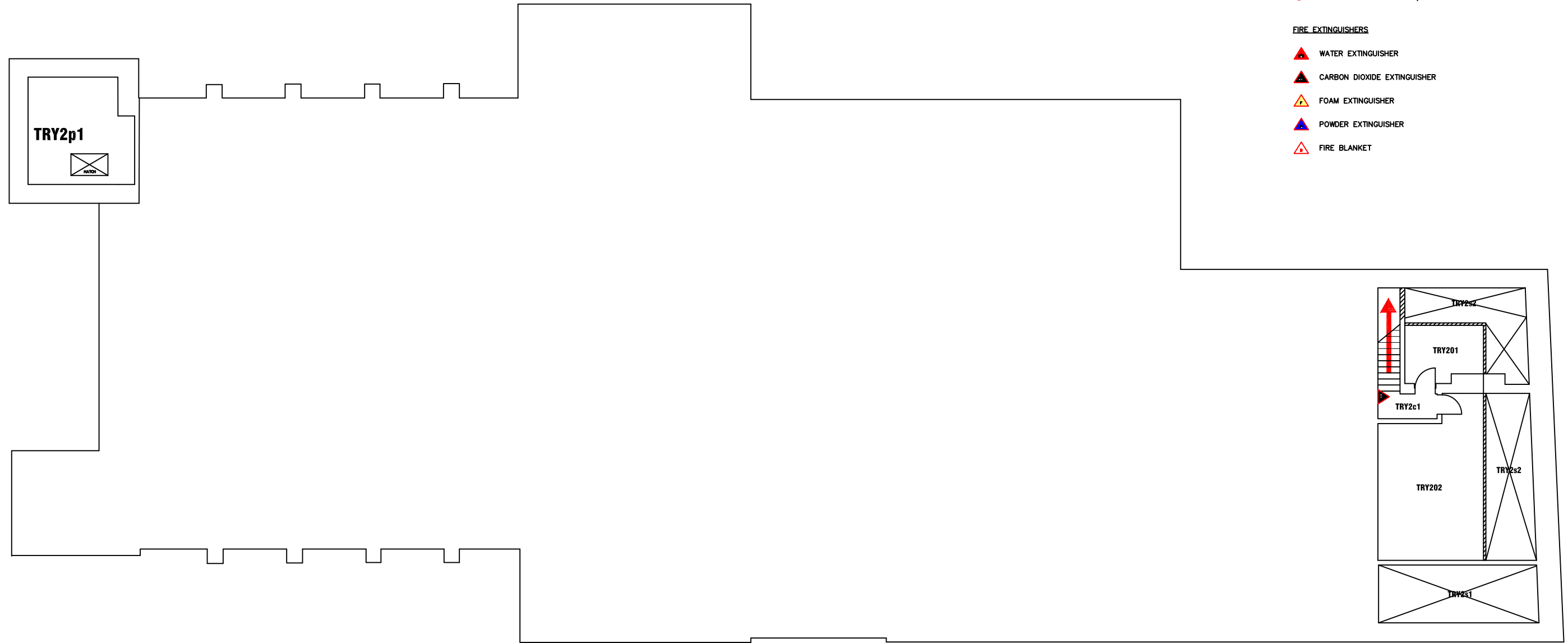
**northumbria**  
UNIVERSITY NEWCASTLE

**Campus Services**

Pandon Building  
Camden Street  
Newcastle Upon Tyne  
NE1 8ST

Campus: CITY CENTRE  
Building: TRINITY BUILDING  
Project: FIRST FLOOR

|                   |                |
|-------------------|----------------|
| Scale:            | Date: JAN 2017 |
| NTS               | Drawn:         |
|                   | Issued:        |
| Job Reference No: |                |
| Drawing No:       | Revision       |



- FIRE EQUIPMENT**
- FIRE ALARM CALL POINT/BREAK GLASS
- FIRE EXTINGUISHERS**
- ▲ WATER EXTINGUISHER
  - ▲ CARBON DIOXIDE EXTINGUISHER
  - ▲ FOAM EXTINGUISHER
  - ▲ POWDER EXTINGUISHER
  - ▲ FIRE BLANKET



Campus: CITY CENTRE  
 Building: TRINITY BUILDING  
 Project: SECOND FLOOR

|                   |                |
|-------------------|----------------|
| Scale:            | Date: FEB 2016 |
| NTS               | Drawn:         |
|                   | Issued:        |
| Job Reference No: |                |
| Drawing No:       | Revision       |