

- FIRE EQUIPMENT**
- FIRE ALARM CALL POINT/BREAK GLASS
- FIRE EXTINGUISHERS**
- ▲ WATER EXTINGUISHER
 - ▲ CARBON DIOXIDE EXTINGUISHER
 - ▲ FOAM EXTINGUISHER
 - ▲ POWDER EXTINGUISHER
 - ▲ FIRE BLANKET



Campus Services

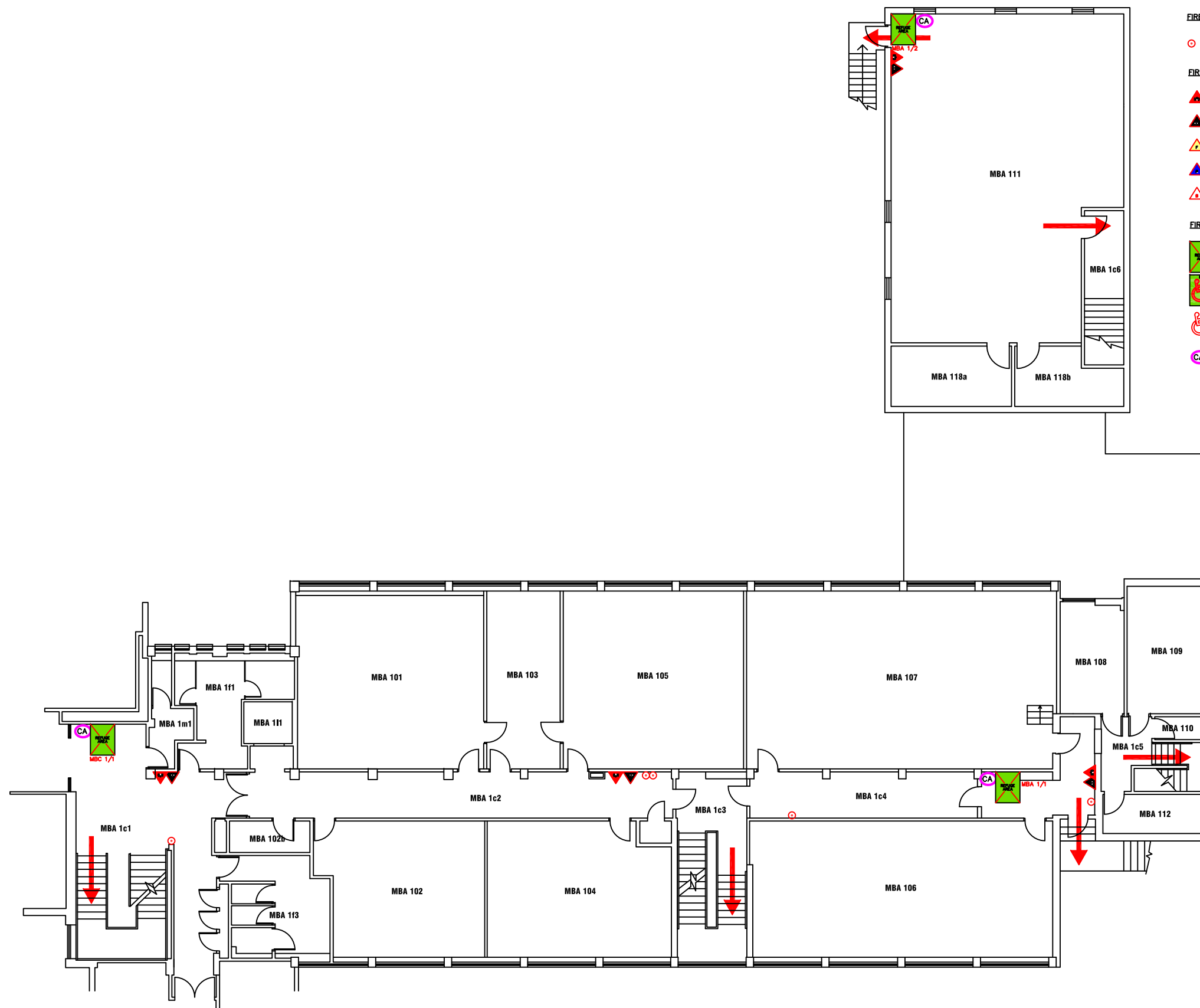
Pandon Building
Camden Street
Newcastle Upon Tyne
NE1 8ST

Campus: COACH LANE
Building: MAIN BUILDING BLOCK A
Project: GROUND FLOOR

Scale:	Date: SEPT 2017
NTS	Drawn:
	Issued:

Job Reference No:

Drawing No:	Revision
-------------	----------



- FIRE EQUIPMENT**
- FIRE ALARM CALL POINT/BREAK GLASS
- FIRE EXTINGUISHERS**
- WATER EXTINGUISHER
 - CARBON DIOXIDE EXTINGUISHER
 - FOAM EXTINGUISHER
 - POWDER EXTINGUISHER
 - FIRE BLANKET
- FIRE REFUGE**
- REFUGE AREA
 - REFUGE AREA WITH EVACUATION CHAIR
 - EVACUATION CHAIR
 - CALL ASSISTANCE POINT




Campus: COACH LANE
 Building: MAIN BUILDING BLOCK A
 Project: FIRST FLOOR

Scale:	Date: AUG 2017
NTS	Drawn:
	Issued:
Job Reference No:	
Drawing No:	Revision

FIRE EQUIPMENT

 FIRE ALARM CALL POINT/BREAK GLASS

FIRE EXTINGUISHERS

 WATER EXTINGUISHER

 CARBON DIOXIDE EXTINGUISHER


 FOAM EXTINGUISHER

 POWDER EXTINGUISHER

 FIRE BLANKET

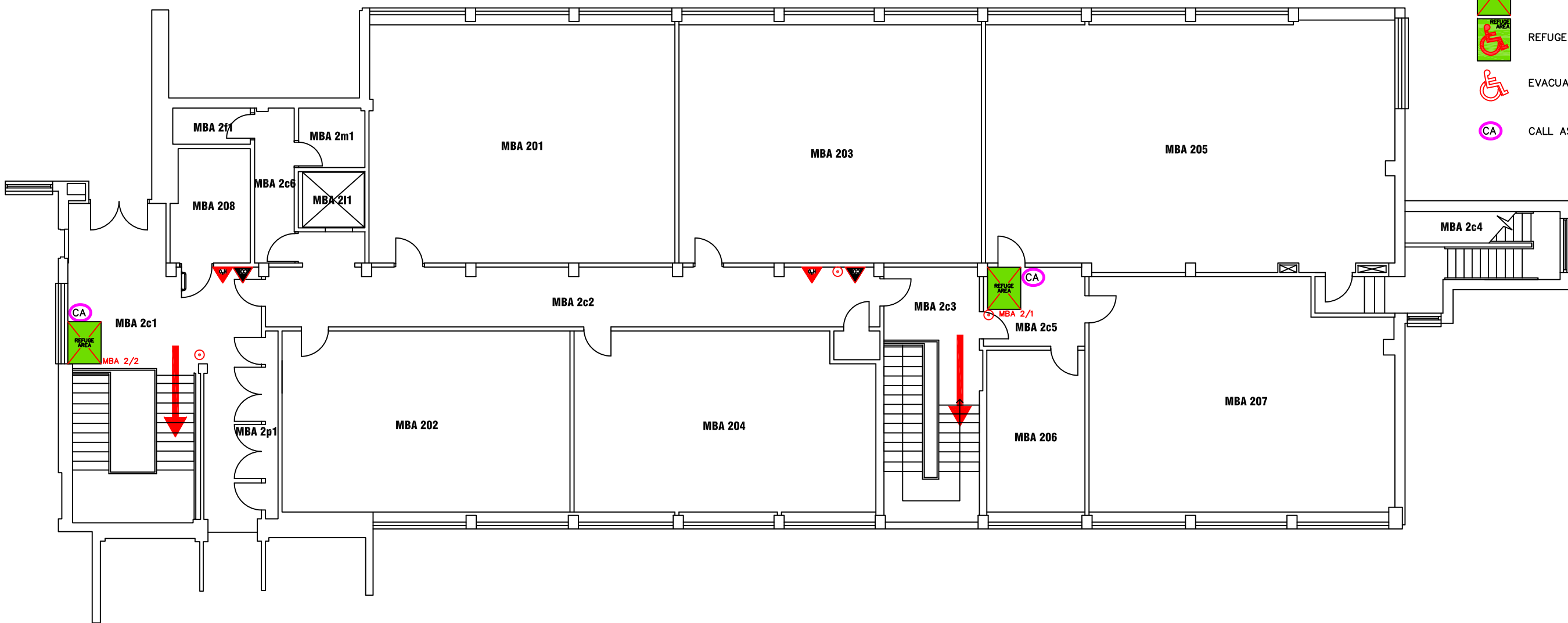
FIRE REFUGE

 REFUGE AREA

 REFUGE AREA WITH EVACUATION CHAIR

 EVACUATION CHAIR

 CALL ASSISTANCE POINT



Campus: COACH LANE		Scale:	Date: AUG 2017
Building: MAIN BUILDING BLOCK A		NTS	Drawn:
Project: SECOND FLOOR			Issued:
Job Reference No:			
Drawing No:		Revision	