

- FIRE EQUIPMENT**
- FIRE ALARM CALL POINT/BREAK GLASS
- FIRE EXTINGUISHERS**
- ▲ WATER EXTINGUISHER
  - ▲ CARBON DIOXIDE EXTINGUISHER
  - ▲ FOAM EXTINGUISHER
  - ▲ POWDER EXTINGUISHER
  - ▲ FIRE BLANKET



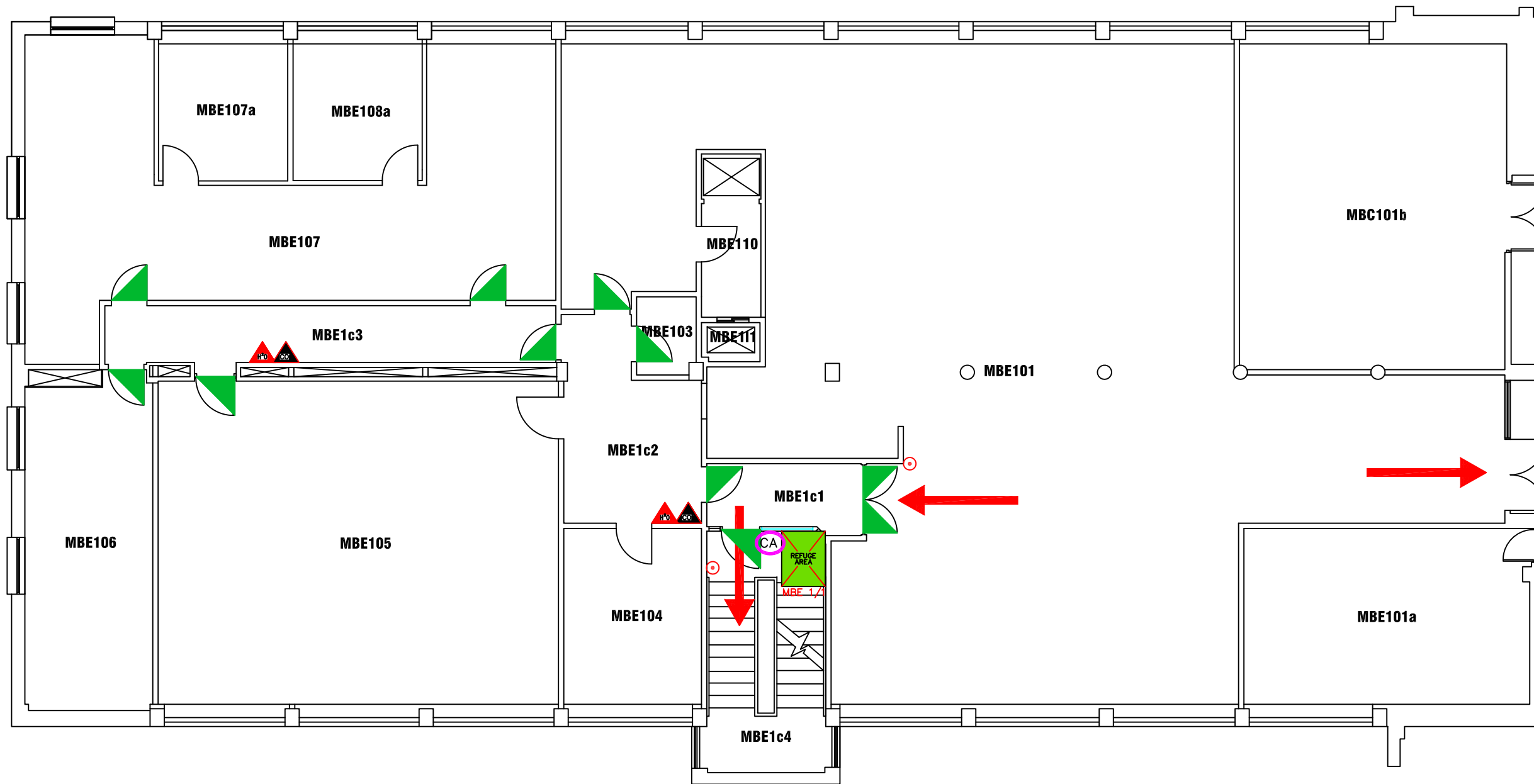
**northumbria**  
UNIVERSITY **NEWCASTLE**

**Campus Services**

Pandon Building  
Camden Street  
Newcastle Upon Tyne  
NE1 8ST

Campus: COACH LANE  
Building: MAIN BUILDING BLOCK E  
Project: GROUND FLOOR

Scale: NTS	Date: SEPT 2017
	Drawn:
	Issued:
Job Reference No:	
Drawing No:	Revision



**FIRE EQUIPMENT**

○ FIRE ALARM CALL POINT/BREAK GLASS

**FIRE EXTINGUISHERS**

- WATER EXTINGUISHER
- CARBON DIOXIDE EXTINGUISHER
- FOAM EXTINGUISHER
- POWDER EXTINGUISHER
- FIRE BLANKET

**FIRE REFUGE**

- REFUGE AREA
- REFUGE AREA WITH EVACUATION CHAIR
- EVACUATION CHAIR
- CALL ASSISTANCE POINT



**Campus Services**

Pandon Building  
Camden Street  
Newcastle Upon Tyne  
NE1 8ST

Campus: COACH LANE  
Building: MAIN BUILDING BLOCK E  
Project: FIRST FLOOR

Scale: NTS Date: SEPT 2017

Drawn:

Issued:

Job Reference No:

Drawing No:

Revision



**FIRE EQUIPMENT**

○ FIRE ALARM CALL POINT/BREAK GLASS

**FIRE EXTINGUISHERS**

- WATER EXTINGUISHER
- CARBON DIOXIDE EXTINGUISHER
- FOAM EXTINGUISHER
- POWDER EXTINGUISHER
- FIRE BLANKET

**FIRE REFUGE**

- REFUGE AREA
- REFUGE AREA WITH EVACUATION CHAIR
- EVACUATION CHAIR
- CALL ASSISTANCE POINT



**Campus Services**

Pandon Building  
Camden Street  
Newcastle Upon Tyne  
NE1 8ST

Campus: COACH LANE  
Building: MAIN BUILDING BLOCK E  
Project: SECOND FLOOR

Scale: NTS Date: JUNE 2017

Drawn:  
Issued:

Job Reference No:

Drawing No: Revision