










- FIRE EQUIPMENT**
-  FIRE ALARM CALL POINT/BREAK GLASS
- FIRE EXTINGUISHERS**
-  WATER EXTINGUISHER
 -  CARBON DIOXIDE EXTINGUISHER
 -  FOAM EXTINGUISHER
 -  POWDER EXTINGUISHER
 -  FIRE BLANKET
-  GAS SHUT OFF VALVE
-  WATER SHUT OFF TAP
-  ELECTRIC SHUT OFF SWITCH

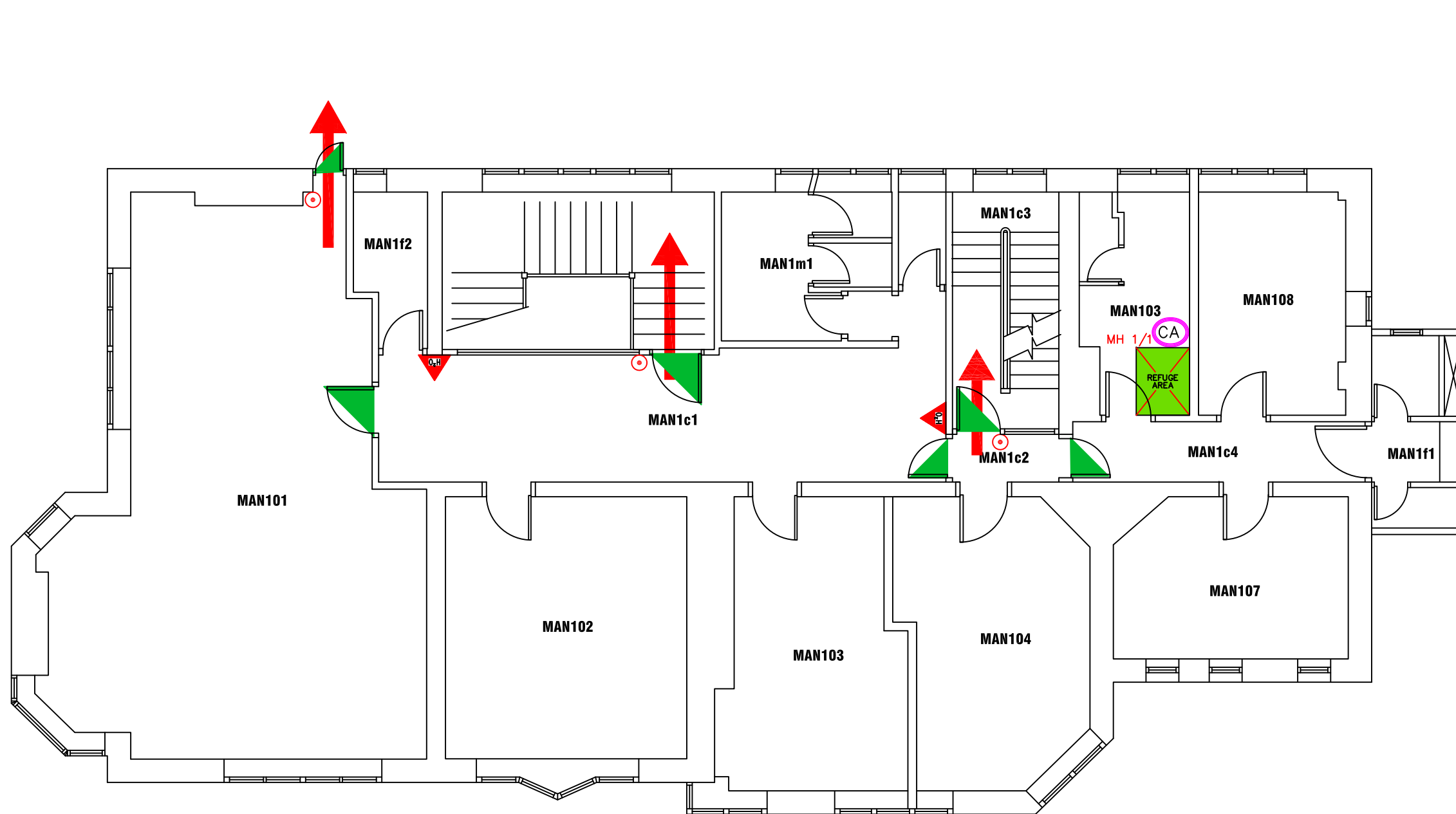


Northumbria University Newcastle

Campus Services

Pandon Building
Camden Street
Newcastle Upon Tyne
NE1 8ST


Campus: COACH LANE		Scale:	Date: JULY 2017
Building: MANOR HOUSE		NTS	Drawn:
Project: GROUND FLOOR			Issued:
Job Reference No:			
Drawing No:			Revision



FIRE EQUIPMENT

 FIRE ALARM CALL POINT/BREAK GLASS

FIRE EXTINGUISHERS

 WATER EXTINGUISHER

 CARBON DIOXIDE EXTINGUISHER

 FOAM EXTINGUISHER

 POWDER EXTINGUISHER


 FIRE BLANKET

FIRE REFUGE

 REFUGE AREA

 REFUGE AREA WITH EVACUATION CHAIR

 EVACUATION CHAIR

 CALL ASSISTANCE POINT



Campus Services

Pandon Building
Camden Street
Newcastle Upon Tyne
NE1 8ST

Campus: COACH LANE
Building: MANOR HOUSE

Project: FIRST FLOOR

Scale: Date: JULY 2017

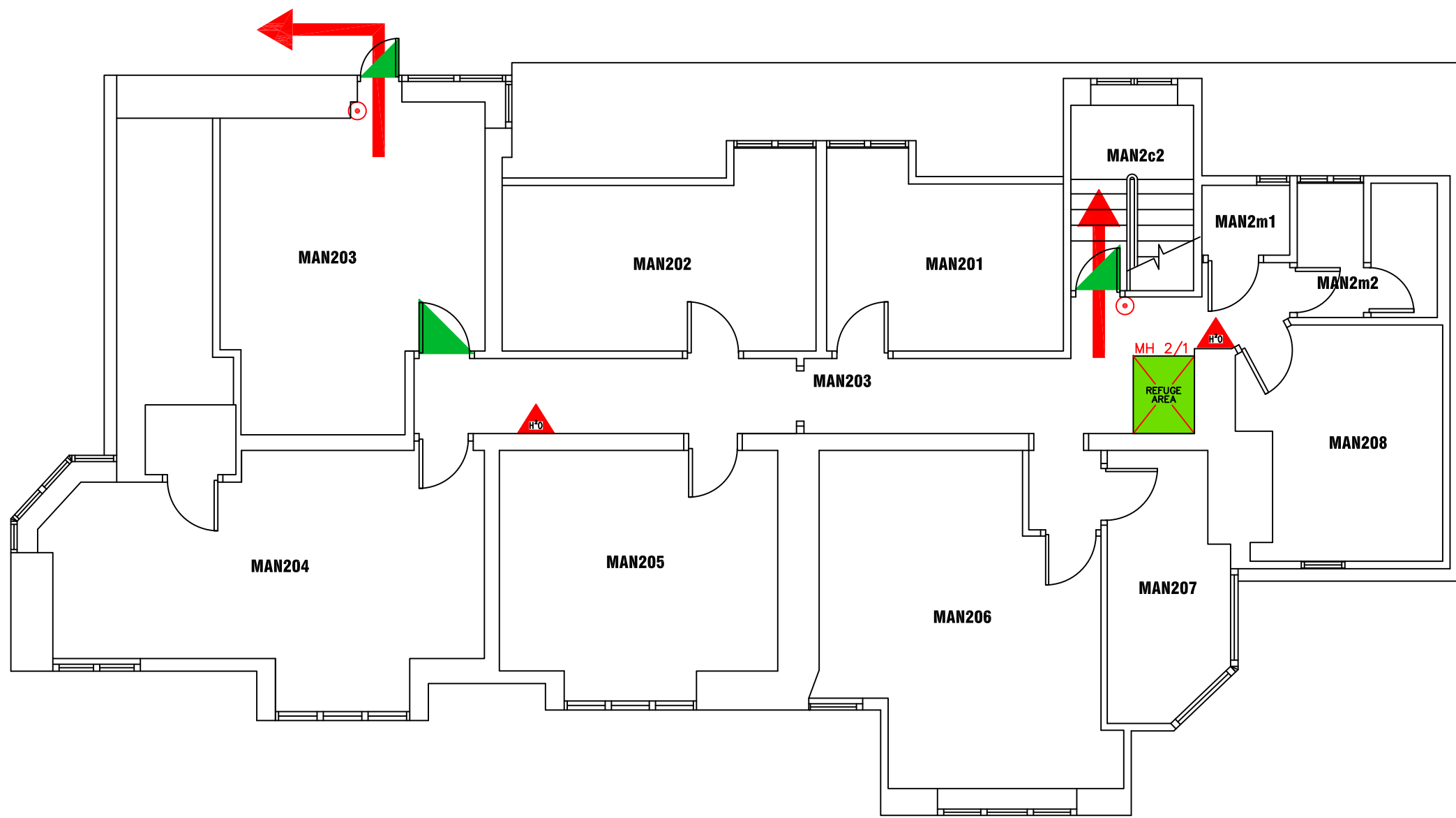
NTS Drawn:

Issued:

Job Reference No:

Drawing No:

Revision




FIRE EQUIPMENT

 FIRE ALARM CALL POINT/BREAK GLASS

FIRE EXTINGUISHERS

 WATER EXTINGUISHER

 CARBON DIOXIDE EXTINGUISHER


 FOAM EXTINGUISHER

 POWDER EXTINGUISHER

 FIRE BLANKET

FIRE REFUGE

 REFUGE AREA

 REFUGE AREA WITH EVACUATION CHAIR

 EVACUATION CHAIR

 CALL ASSISTANCE POINT



Campus Services

Pandon Building
Camden Street
Newcastle Upon Tyne
NE1 8ST

Campus: COACH LANE
Building: MANOR HOUSE

Project: SECOND FLOOR

Scale: NTS Date: JULY 2017

Drawn:

Issued:

Job Reference No:

Drawing No:

Revision