

**FIRE EQUIPMENT**

○ FIRE ALARM CALL POINT/BREAK GLASS

**FIRE REFUGE**

 REFUGE AREA

 REFUGE AREA WITH EVACUATION CHAIR

 EVACUATION CHAIR

○ CA CALL ASSISTANCE POINT



**Campus Services**

Pandon Building  
Camden Street  
Newcastle Upon Tyne  
NE1 8ST

Campus: SATELLITE  
Building: HIGH BRIDGE  
Project: GROUND FLOOR

Scale: NTS Date: FEB 2017

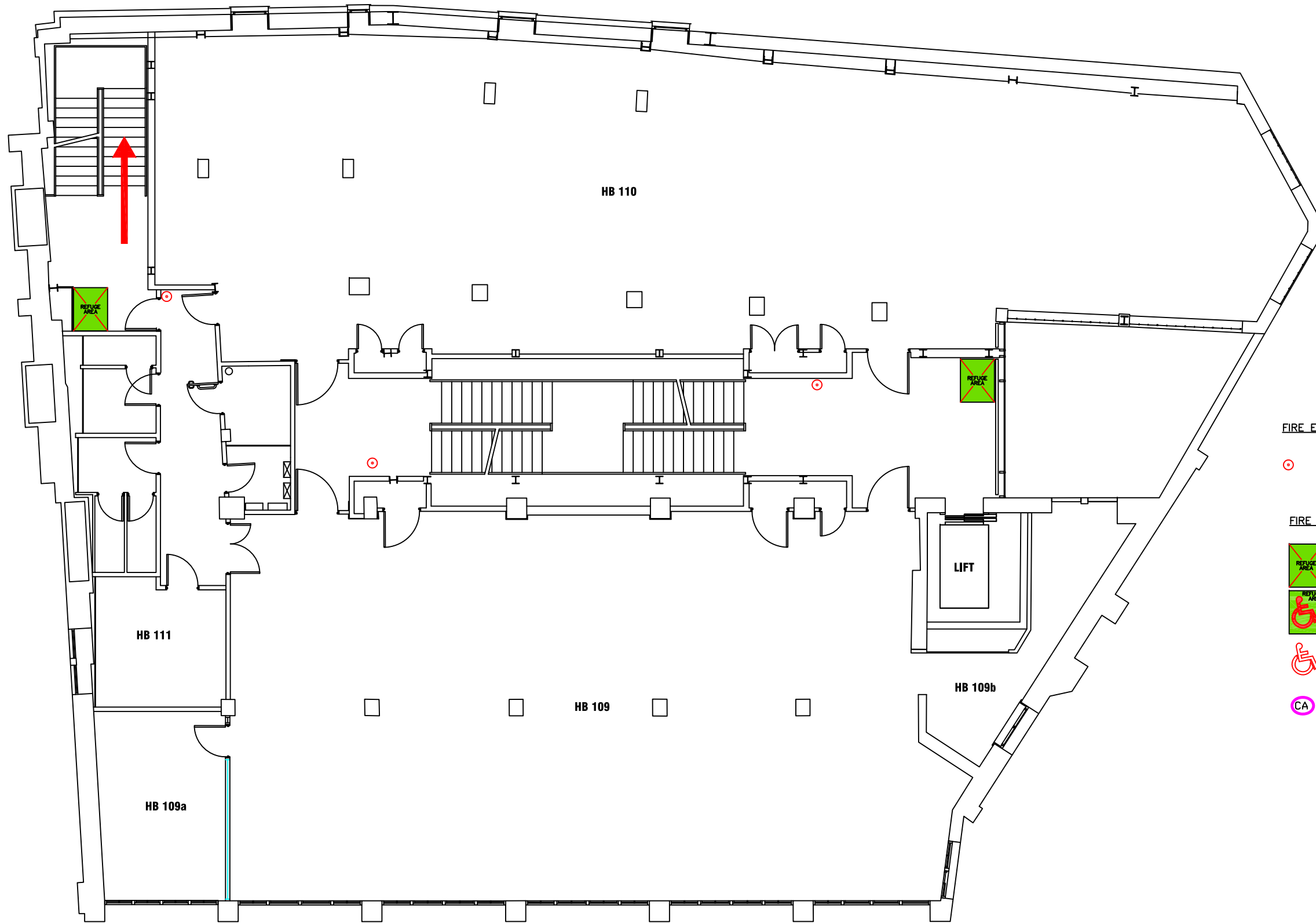
Drawn:

Issued:

Job Reference No:

Drawing No:

Revision




**FIRE EQUIPMENT**


 FIRE ALARM CALL POINT/BREAK GLASS

**FIRE REFUGE**

 REFUGE AREA

 REFUGE AREA WITH EVACUATION CHAIR

 EVACUATION CHAIR

 CALL ASSISTANCE POINT



**Campus Services**

Pandon Building  
Camden Street  
Newcastle Upon Tyne  
NE1 8ST

Campus: SATELLITE

Building: HIGH BRIDGE

Project: FIRST FLOOR

Scale:

NTS

Date: FEB 2017

Drawn:

Issued:

Job Reference No:

Drawing No:

Revision



- FIRE EQUIPMENT**
- FIRE ALARM CALL POINT/BREAK GLASS
- FIRE REFUGE**
- REFUGE AREA
  - REFUGE AREA WITH EVACUATION CHAIR
  - EVACUATION CHAIR
  - CALL ASSISTANCE POINT



Campus: SATELLITE  
 Building: HIGH BRIDGE  
 Project: THIRD FLOOR

Scale: NTS	Date: FEB 2017
	Drawn:
	Issued:
Job Reference No:	
Drawing No:	Revision