

**FIRE EQUIPMENT**

⊙ FIRE ALARM CALL POINT/BREAK GLASS

**FIRE EXTINGUISHERS**

▲ WATER EXTINGUISHER

▲ CARBON DIOXIDE EXTINGUISHER

▲ FOAM EXTINGUISHER

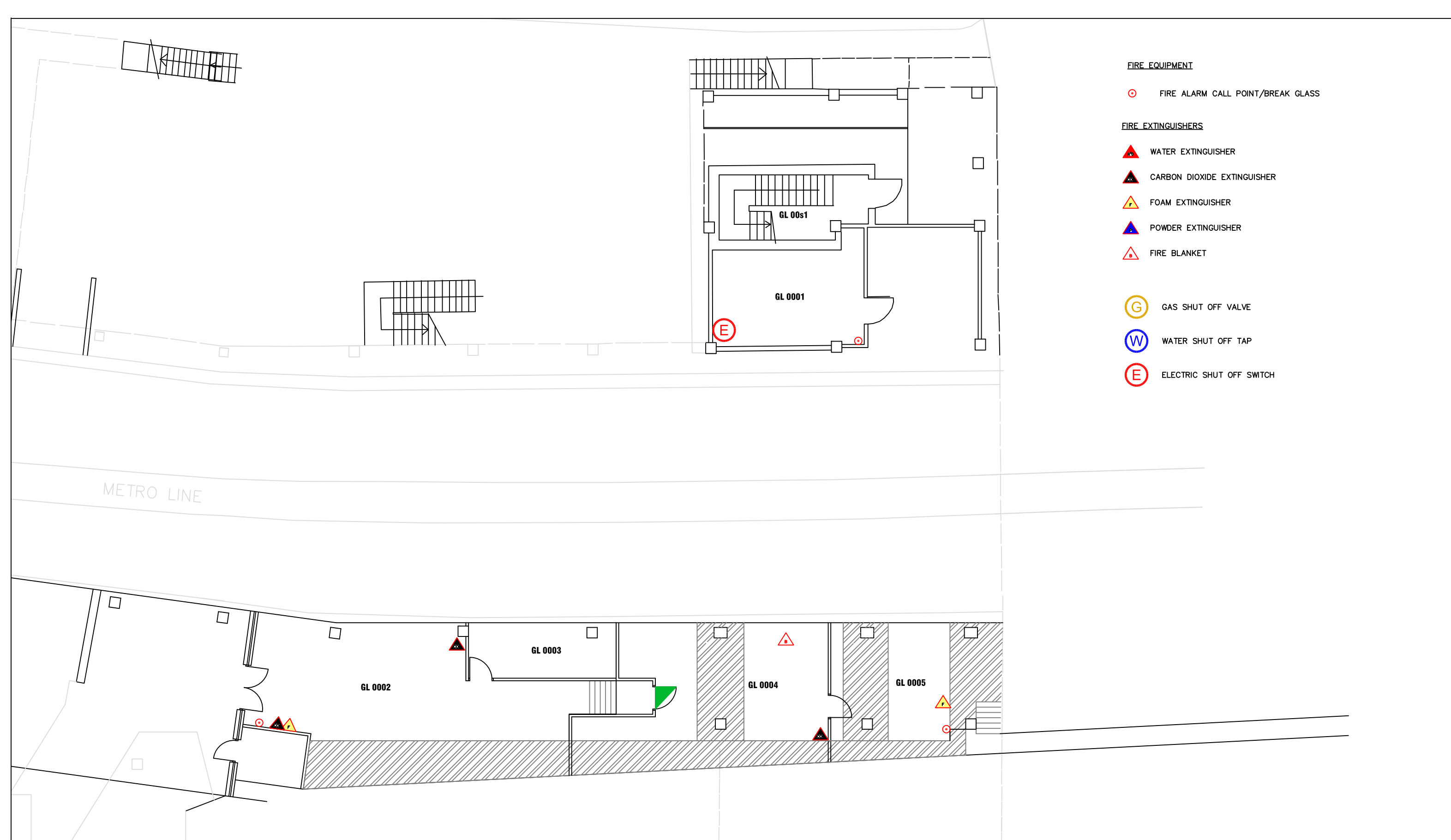
▲ POWDER EXTINGUISHER

▲ FIRE BLANKET

Ⓞ GAS SHUT OFF VALVE

Ⓜ WATER SHUT OFF TAP

ⓔ ELECTRIC SHUT OFF SWITCH



**Campus Services**

Pandon Building  
Camden Street  
Newcastle Upon Tyne  
NE1 8ST

Campus: CITY CENTRE

Building: GLENAMARA

Project: BASEMENT LEVEL

Scale:

NTS

Date: MAY 2015

Drawn:

Issued:

Job Reference No:

Drawing No:

Revision