

FIRE EQUIPMENT

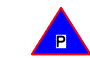
 FIRE ALARM CALL POINT/BREAK GLASS

FIRE EXTINGUISHERS


 WATER EXTINGUISHER

 CARBON DIOXIDE EXTINGUISHER

 FOAM EXTINGUISHER

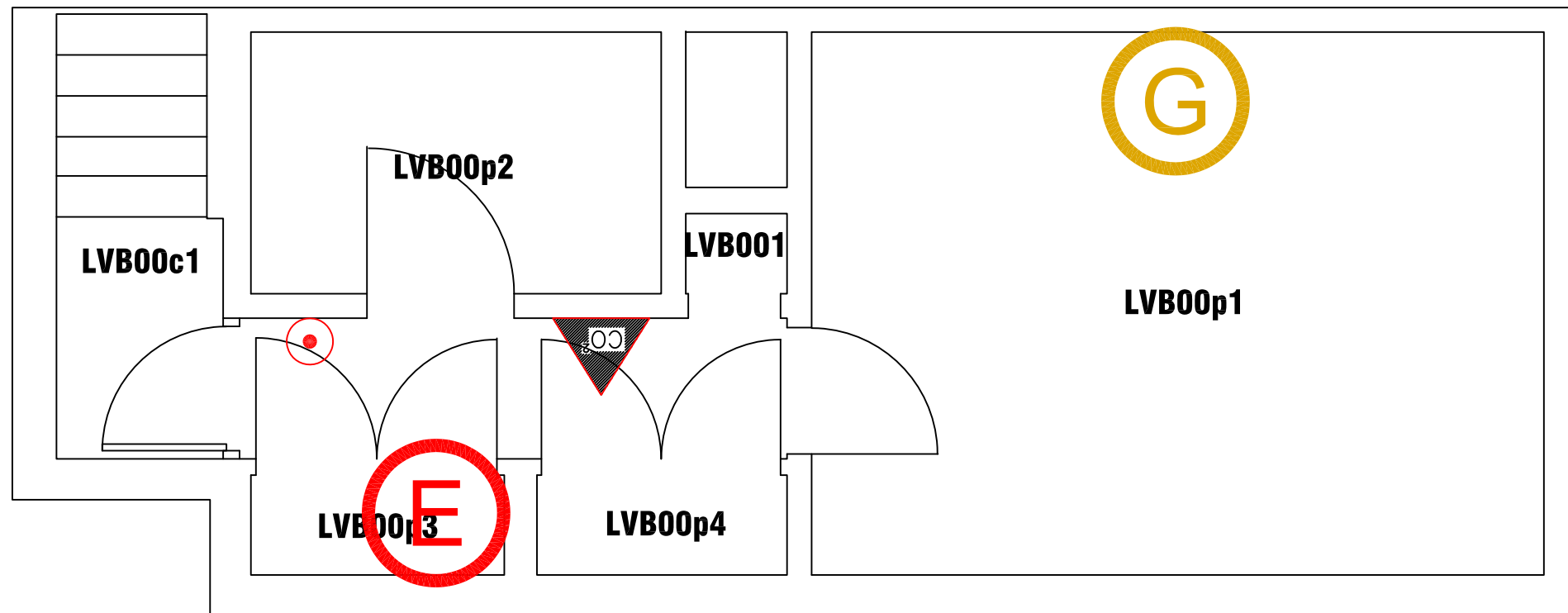
 POWDER EXTINGUISHER

 FIRE BLANKET

 GAS SHUT OFF VALVE

 WATER SHUT OFF TAP

 ELECTRIC SHUT OFF SWITCH



Campus Services

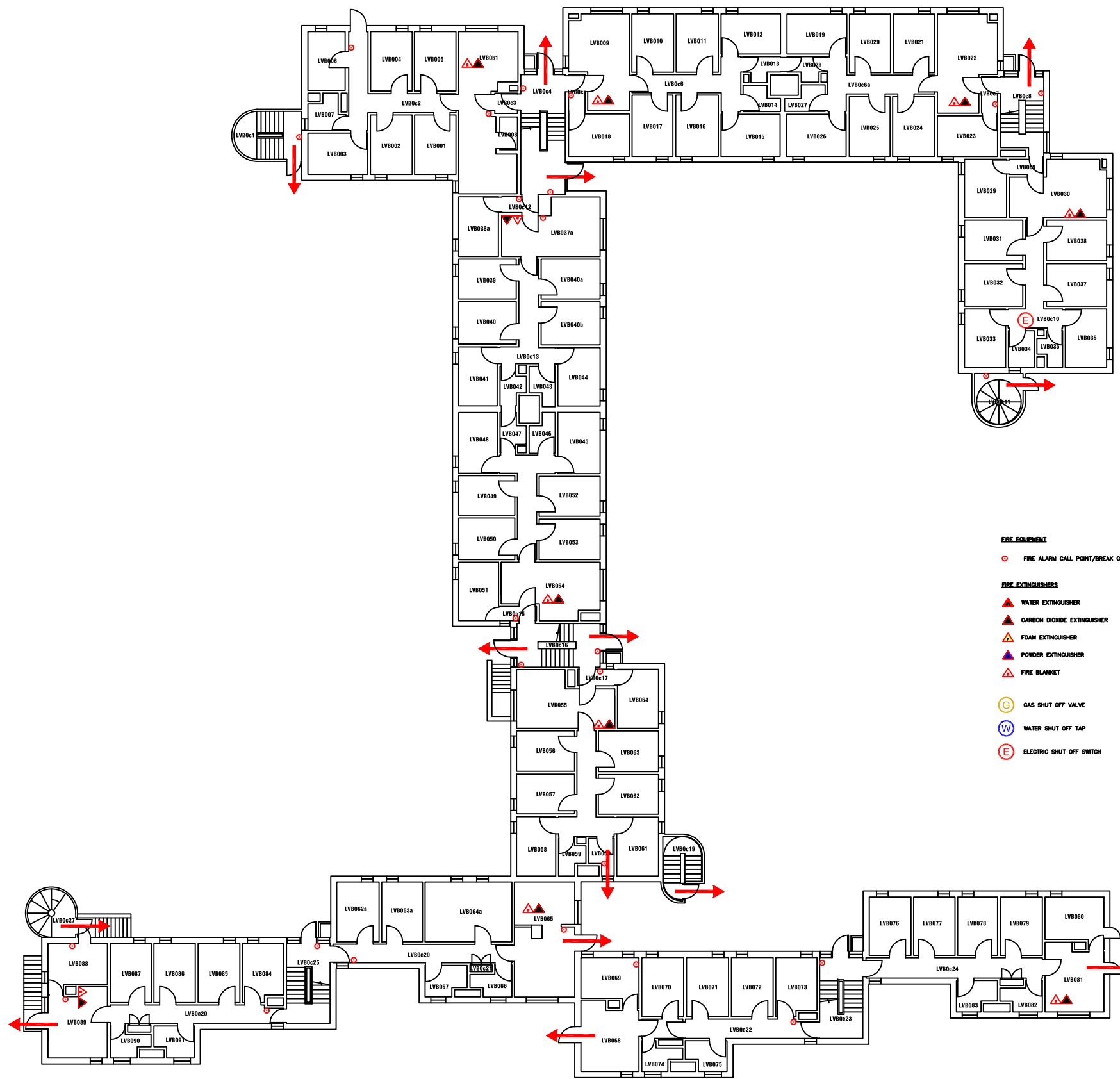
Pandon Building
Camden Street
Newcastle Upon Tyne
NE1 8ST

Campus: CITY CENTRE
Building: LOVAINE FLATS B
Project: BASEMENT LEVEL

Scale:	Date: MAR 2017
NTS	Drawn:
	Issued:

Job Reference No:

Drawing No:	Revision
-------------	----------

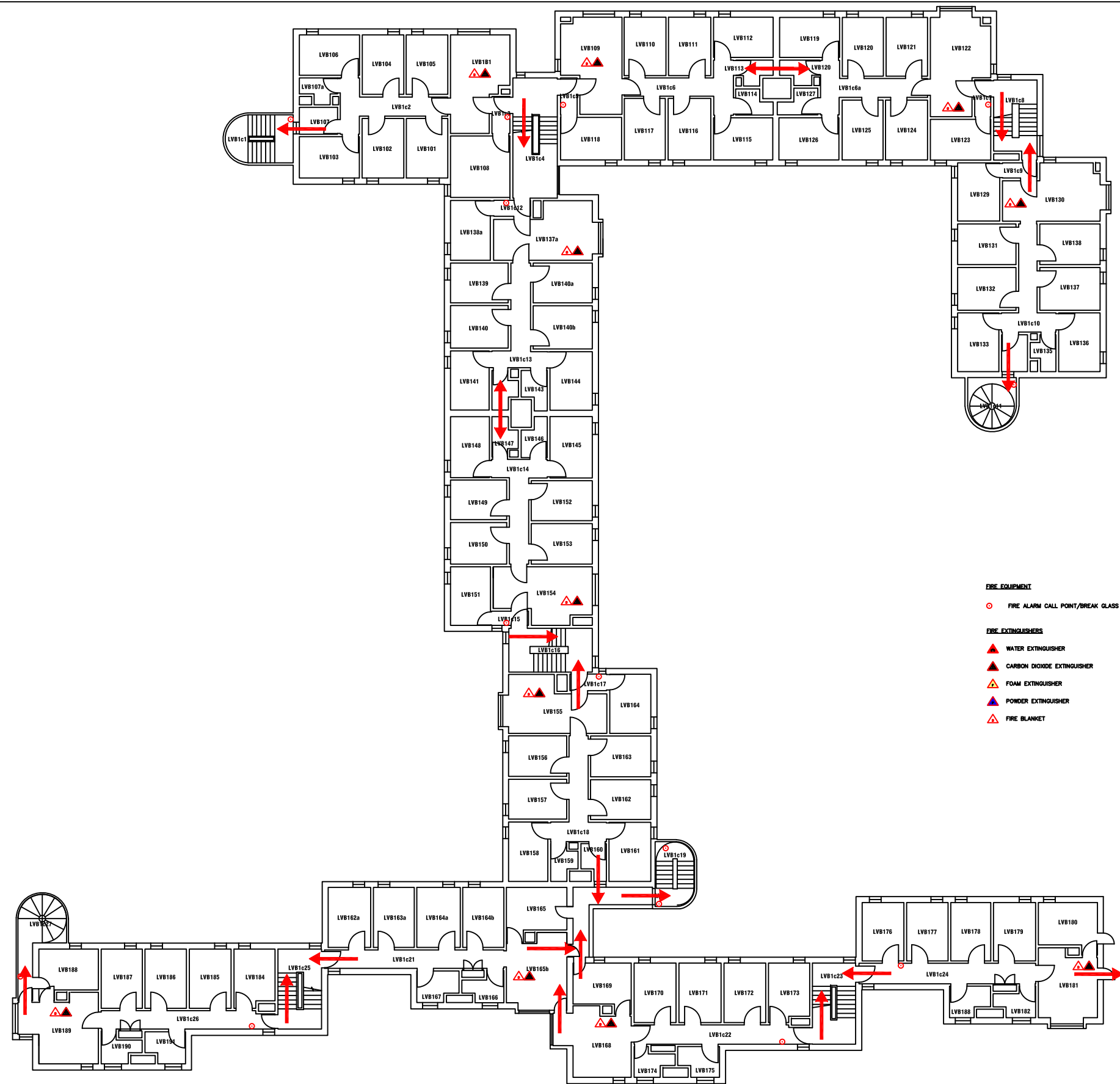


- FIRE EQUIPMENT**
- FIRE ALARM CALL POINT/BREAK GLASS
- FIRE EXTINGUISHERS**
- ▲ WATER EXTINGUISHER
 - ▲ CARBON DIOXIDE EXTINGUISHER
 - ▲ FOAM EXTINGUISHER
 - ▲ POWDER EXTINGUISHER
 - ▲ FIRE BLANKET
- ⊖ GAS SHUT OFF VALVE
 - ⊖ WATER SHUT OFF TAP
 - ⊖ ELECTRIC SHUT OFF SWITCH



Campus: CITY CENTRE
 Building: LOVAINE FLATS B
 Project: GROUND FLOOR

Scale: NTS	Date: MAR 2017
	Drawn:
	Issued:
Job Reference No:	
Drawing No:	Revision



- FIRE EQUIPMENT**
- FIRE ALARM CALL POINT/BREAK GLASS
- FIRE EXTINGUISHERS**
- ▲ WATER EXTINGUISHER
 - ▲ CARBON DIOXIDE EXTINGUISHER
 - ▲ FOAM EXTINGUISHER
 - ▲ POWDER EXTINGUISHER
 - ▲ FIRE BLANKET



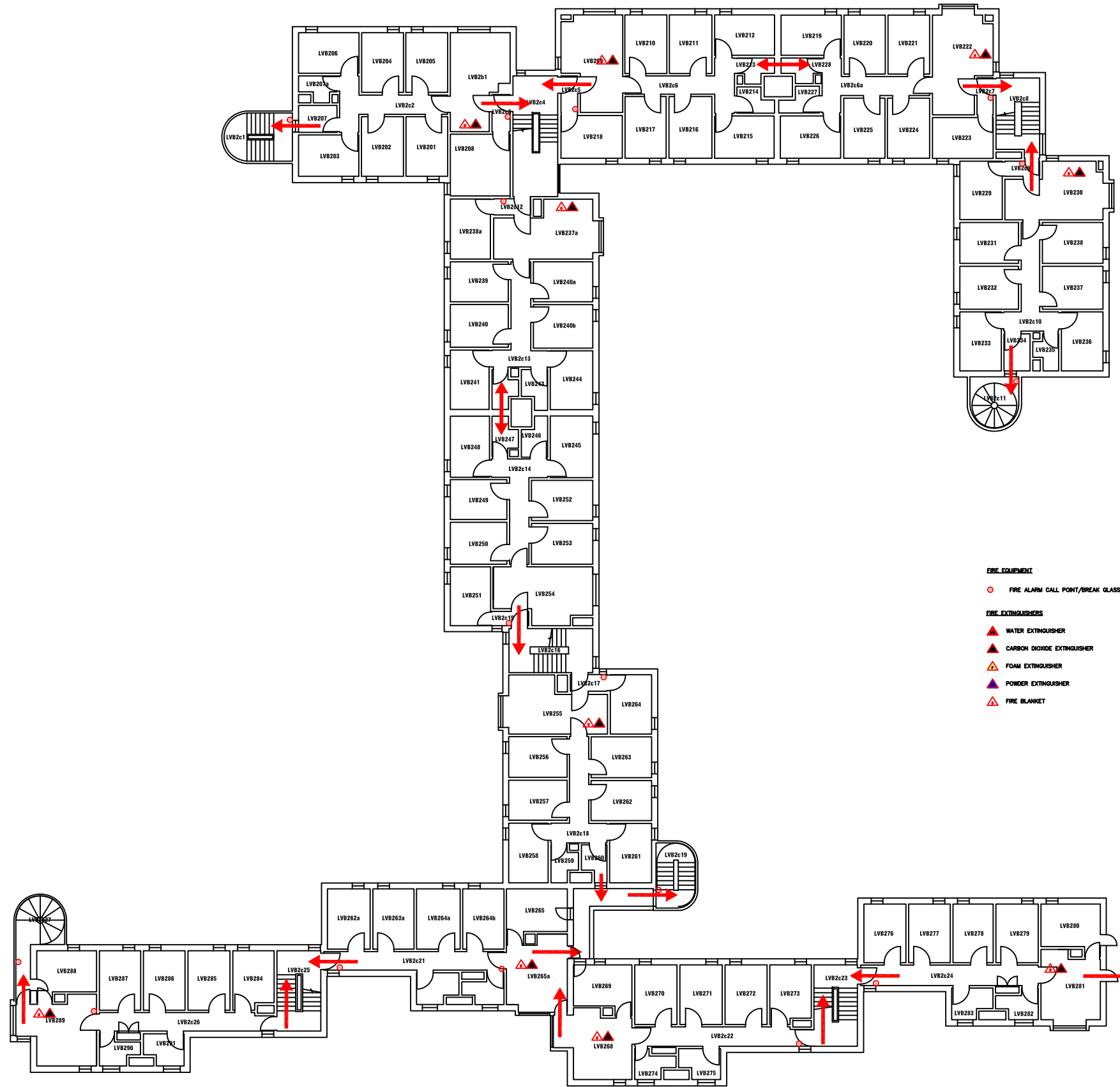
Pandon Building
Camden Street
Newcastle Upon Tyne
NE1 8ST

Campus: CITY CENTRE
Building: LOVAINE FLATS B
Project: FIRST FLOOR

Scale: NTS	Date: MAR 2017
	Drawn:
	Issued:

Job Reference No:

Drawing No:	Revision
-------------	----------



Campus Services

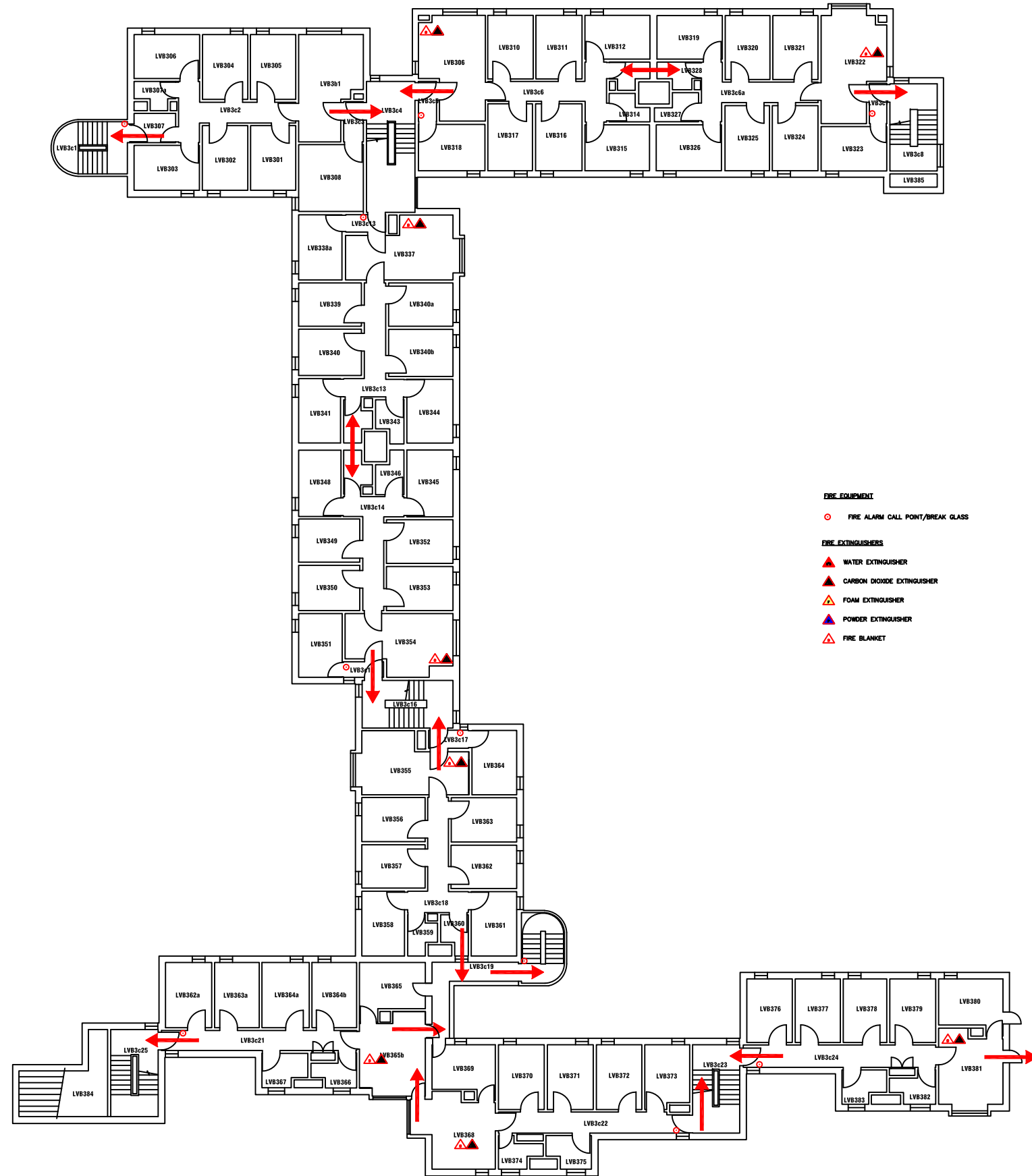
Pandon Building
Camden Street
Newcastle Upon Tyne
NE1 8ST

Campus: CITY CENTRE
Building: LOVAINE FLATS B
Project: SECOND FLOOR

Scale: NTS	Date: MAR 2017
	Drawn:
	Issued:

Job Reference No:

Drawing No:	Revision
-------------	----------



Campus: CITY CENTRE
Building: LOVAINE FLATS B
Project: THIRD FLOOR

Scale: NTS	Date: MAR 2017
	Drawn:
	Issued:

Job Reference No:

Drawing No:	Revision
-------------	----------