

**FIRE EQUIPMENT**

○ FIRE ALARM CALL POINT/BREAK GLASS

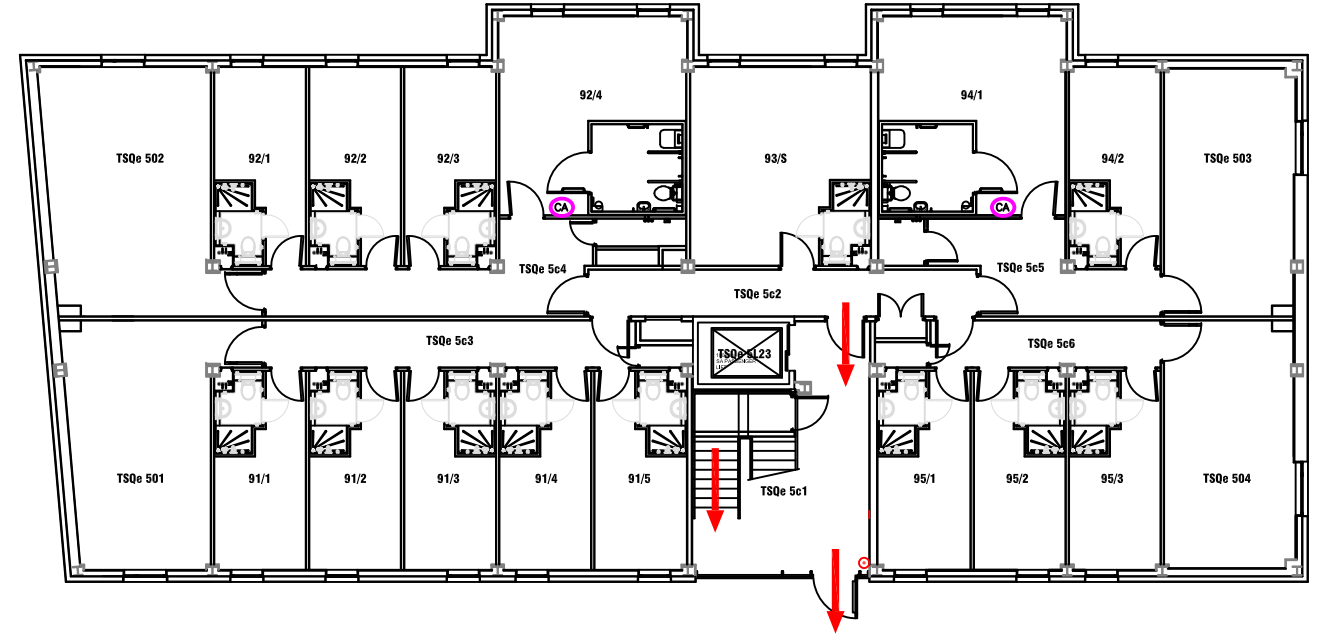
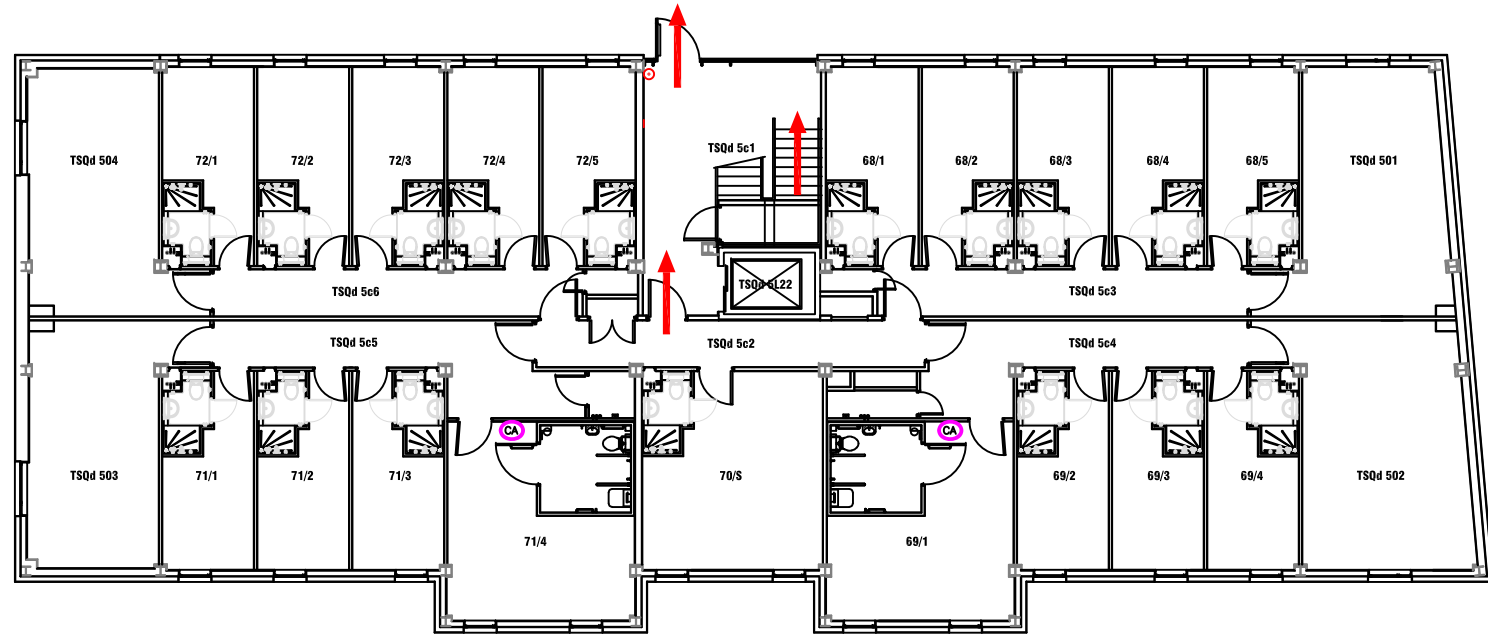
**FIRE REFUGE**

REFUGE AREA

REFUGE AREA WITH EVACUATION CHAIR

EVACUATION CHAIR

CA CALL ASSISTANCE POINT



**Campus Services**

Pandon Building  
Camden Street  
Newcastle Upon Tyne  
NE1 8ST

Campus: SATELLITE  
Building: TRINITY SQUARE

Project: BLOCK D & E  
LEVEL 5

Scale:

NTS

Date: AUG 2015

Drawn:

Issued:

Job Reference No:

Drawing No:

Revision