

- FIRE EQUIPMENT**
- FIRE ALARM CALL POINT/BREAK GLASS
  - FIRE ALARM CONTROL PANEL
  - ◻ FIRE ALARM INTERFACE PANEL
  - UNSWITCHED FUSE SPUR
  - JUNCTION BOX
  - △ FIRE ALARM SOUNDER
  - FIRE ALARM BELL
  - ◻ VISUAL WARNING DEVICE
- FIRE EXTINGUISHERS**
- △ WATER EXTINGUISHER
  - △ CARBON DIOXIDE EXTINGUISHER
  - △ FOAM EXTINGUISHER
  - △ POWDER EXTINGUISHER
  - △ FIRE BLANKET
- FIRE SIGNAGE**
- ◻ FIRE EXIT SIGN
  - ◻ FIRE EXIT DIRECTIONAL SIGN
  - ◻ DOUBLE SIDED FIRE EXIT SIGN
  - ◻ FIRE ACTION NOTICE
  - ◻ ILLUMINATED FIRE EXIT SIGN

DATE	DESCRIPTION	REV
		-
<b style="font-size: 1.2em;">Northumbria University</b> NEWCASTLE		
Campus Services Pandon Building Camden Street Newcastle upon Tyne NE1 8ST		
<b>Campus:</b> CITY CENTRE <b>Building:</b> SPORT CENTRAL <b>Title:</b> GROUND FLOOR LEVEL		
Scale:	Date:	MAR 2019
NTS	Drawn:	
	Issued:	
Project No:		
Drawing No:	Rev:	



- FIRE EQUIPMENT**
- FIRE ALARM CALL POINT/BREAK GLASS
  - FIRE ALARM CONTROL PANEL
  - FIRE ALARM INTERFACE PANEL
  - ▲ UNSWITCHED FUSE SPUR
  - JUNCTION BOX
  - ▲ FIRE ALARM SOUNDER
  - ▲ FIRE ALARM BELL
  - ▲ VISUAL WARNING DEVICE
- FIRE EXTINGUISHERS**
- ▲ WATER EXTINGUISHER
  - ▲ CARBON DIOXIDE EXTINGUISHER
  - ▲ FOAM EXTINGUISHER
  - ▲ POWDER EXTINGUISHER
  - ▲ FIRE BLANKET
- FIRE STORAGE**
- FIRE EXIT SIGN
  - FIRE EXIT DIRECTIONAL SIGN
  - DOUBLE SIDED FIRE EXIT SIGN
  - FIRE ACTION NOTICE
  - ILLUMINATED FIRE EXIT SIGN
- FIRE REFUGE**
- REFUGE AREA
  - REFUGE AREA WITH EVACUATION CHAIR
  - EVACUATION CHAIR
  - CALL ASSISTANCE POINT

DATE	DESCRIPTION	REV
		-



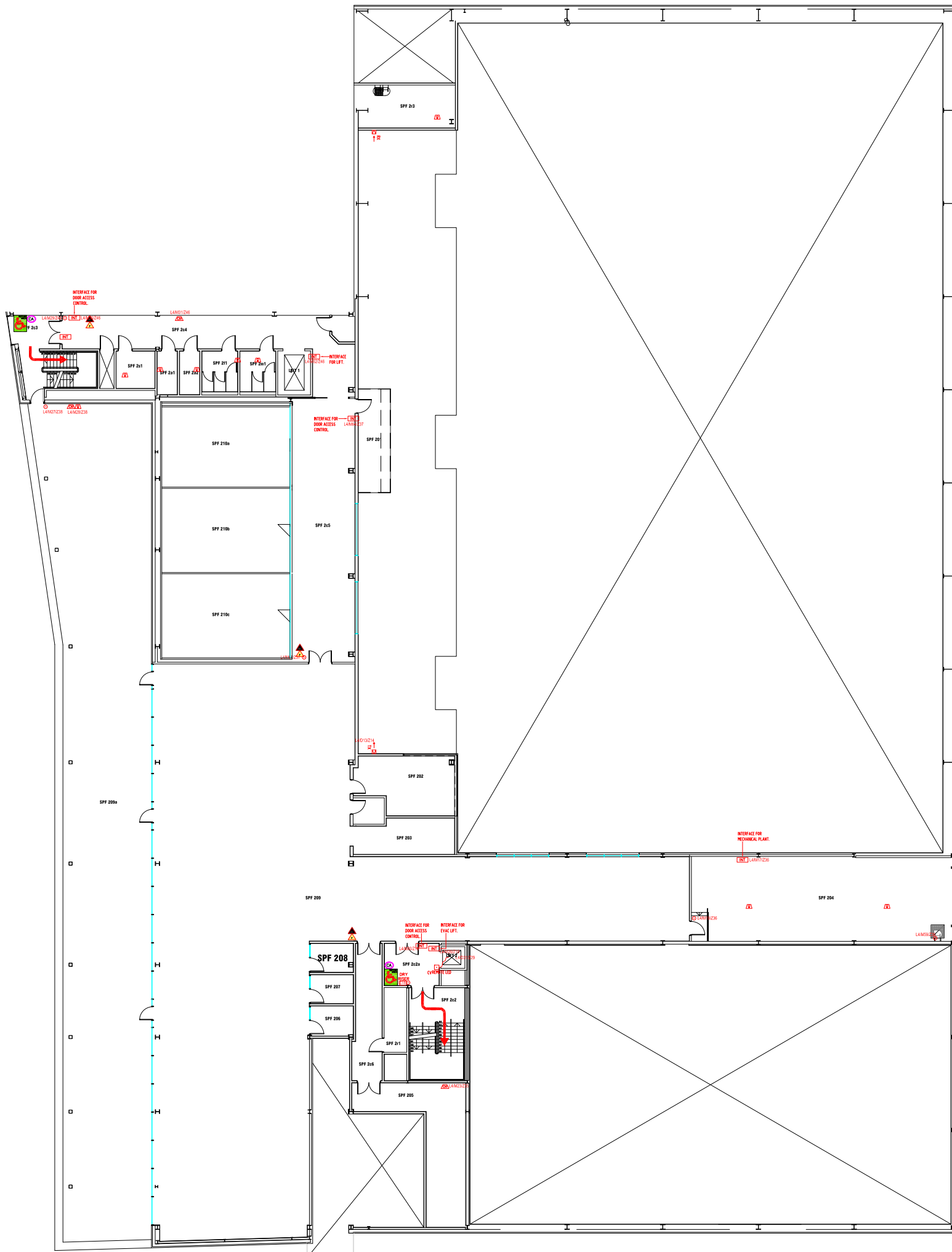
Campus Services  
 Pandon Building  
 Camden Street  
 Newcastle upon Tyne  
 NE1 8ST

Campus: CITY CENTRE  
 Building: SPORT CENTRAL  
 Title: FIRST FLOOR LEVEL

Scale:	Date: JULY 2019
NTS	Drawn:
	Issued:

Project No:

Drawing No:	Rev:
-------------	------



- FIRE EQUIPMENT**
- FIRE ALARM CALL POINT/BREAK GLASS
  - FIRE ALARM CONTROL PANEL
  - FIRE ALARM INTERFACE PANEL
  - UNSWITCHED FUSE SPUR
  - JUNCTION BOX
  - FIRE ALARM SOUNDER
  - FIRE ALARM BELL
  - VISUAL WARNING DEVICE
- FIRE EXTINGUISHERS**
- WATER EXTINGUISHER
  - CARBON DIOXIDE EXTINGUISHER
  - FOAM EXTINGUISHER
  - POWDER EXTINGUISHER
  - FIRE BLANKET
- FIRE SIGNAGE**
- FIRE EXIT SIGN
  - FIRE EXIT DIRECTIONAL SIGN
  - DOUBLE SIDED FIRE EXIT SIGN
  - FIRE ACTION NOTICE
  - ILLUMINATED FIRE EXIT SIGN
- FIRE REFUGE**
- REFUGE AREA
  - REFUGE AREA WITH EVACUATION CHAIR
  - EVACUATION CHAIR
  - CALL ASSISTANCE POINT

DATE	DESCRIPTION	REV
		-



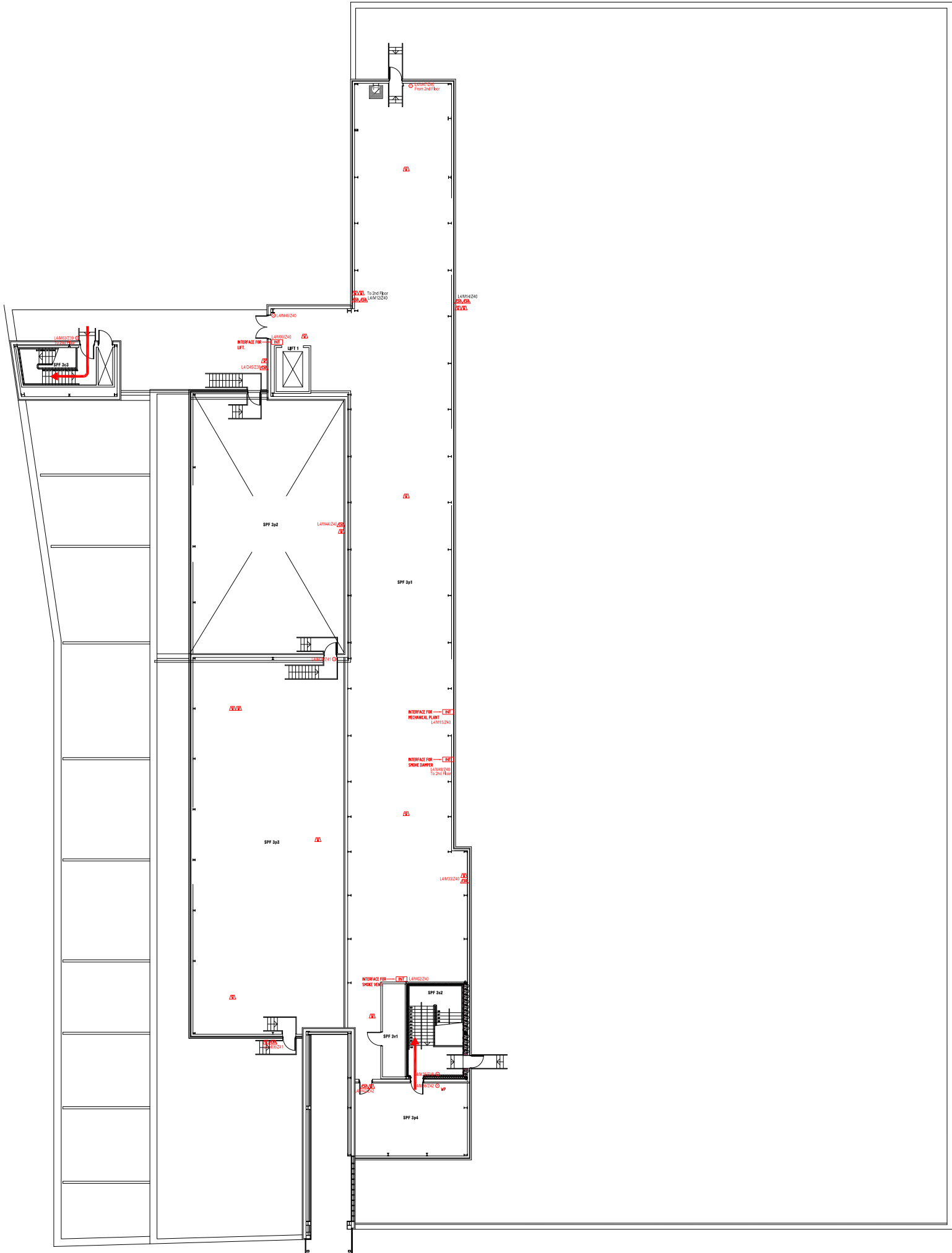
Campus Services  
 Pandon Building  
 Camden Street  
 Newcastle upon Tyne  
 NE1 8ST

Campus: CITY CENTRE  
 Building: SPORT CENTRAL  
 Title: SECOND FLOOR LAYOUT

Scale:	Date: JULY 2019
NTS	Drawn:
	Issued:

Project No:

Drawing No:	Rev:
-------------	------



- FIRE EQUIPMENT**
- FIRE ALARM CALL POINT/BREAK GLASS
  - FIRE ALARM CONTROL PANEL
  - FIRE ALARM INTERFACE PANEL
  - ▲ UNWITTED FUSE SPUR
  - JUNCTION BOX
  - FIRE ALARM SOUNDER
  - FIRE ALARM BELL
  - VISUAL WARNING DEVICE
- FIRE EXTINGUISHERS**
- ▲ WATER EXTINGUISHER
  - ▲ CARBON DIOXIDE EXTINGUISHER
  - ▲ FOM EXTINGUISHER
  - ▲ POWDER EXTINGUISHER
  - ▲ FIRE BLANKET
- FIRE SIGNAGE**
- FIRE EXIT SIGN
  - FIRE EXIT DIRECTIONAL SIGN
  - DOUBLE SIDED FIRE EXIT SIGN
  - FIRE ACTION NOTICE
  - ILLUMINATED FIRE EXIT SIGN

DATE	DESCRIPTION	REV



**Northumbria University**  
NEWCASTLE

Campus Services  
Pandon Building  
Camden Street  
Newcastle upon Tyne  
NE1 8ST

Campus: CITY CENTRE  
Building: SPORT CENTRAL  
Title: THIRD FLOOR LEVEL

Scale:	Date: JAN 2019
NTS	Drawn:
	Issued:

Project No:

Drawing No: Rev: