


- FIRE EQUIPMENT**
- FIRE ALARM CALL POINT/BREAK GLASS
  - FIRE ALARM CONTROL PANEL
  - FIRE ALARM INTERFACE PANEL
  - UNSWITCHED FUSE SPUR
  - JUNCTION BOX
  - FIRE ALARM SOUNDER
  - FIRE ALARM BELL
  - VISUAL WARNING DEVICE
- FIRE EXTINGUISHERS**
- WATER EXTINGUISHER
  - CARBON DIOXIDE EXTINGUISHER
  - FOAM EXTINGUISHER
  - POWDER EXTINGUISHER
  - FIRE BLANKET
- FIRE SIGNAGE**
- FIRE EXIT SIGN
  - FIRE EXIT DIRECTIONAL SIGN
  - DOUBLE SIDED FIRE EXIT SIGN
  - FIRE ACTION NOTICE
  - ILLUMINATED FIRE EXIT SIGN

DATE	DESCRIPTION	REV
		-



**Northumbria University**  
NEWCASTLE

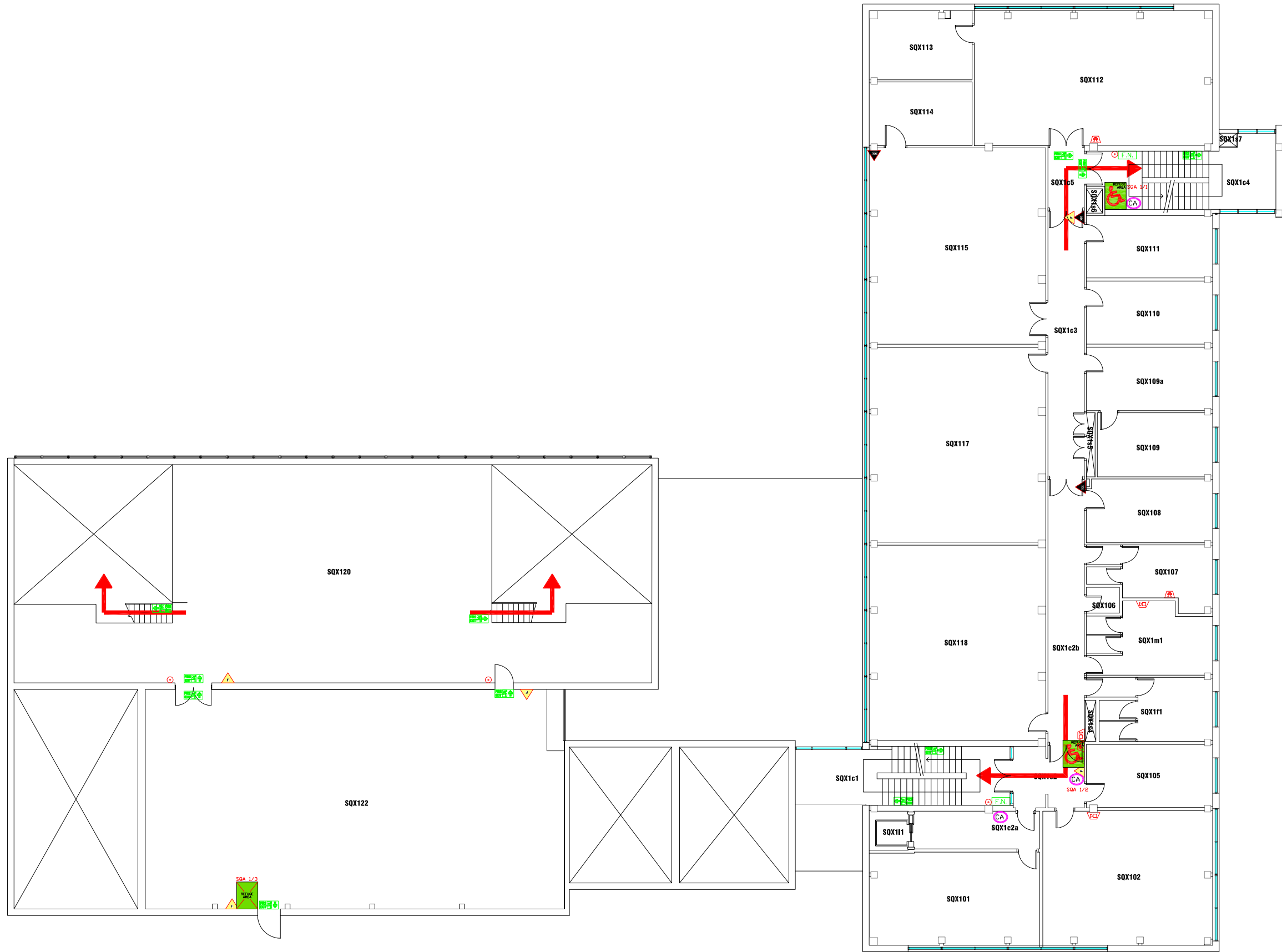
Campus Services  
 Pandon Building  
 Camden Street  
 Newcastle upon Tyne  
 NE1 8ST

Campus: CITY CENTRE  
 Building: SQUIRES ANNEXE  
 Title: GROUND FLOOR LEVEL

Scale:	Date: JULY 2019
NTS	Drawn:
	Issued:

Project No:

Drawing No:	Rev:
-------------	------



- FIRE EQUIPMENT**
- FIRE ALARM CALL POINT/BREAK GLASS
  - FIRE ALARM CONTROL PANEL
  - FIRE ALARM INTERFACE PANEL
  - UNSWITCHED FUSE SPUR
  - JUNCTION BOX
  - FIRE ALARM SOUNDER
  - FIRE ALARM BELL
  - VISUAL WARNING DEVICE
- FIRE EXTINGUISHERS**
- WATER EXTINGUISHER
  - CARBON DIOXIDE EXTINGUISHER
  - FOAM EXTINGUISHER
  - POWDER EXTINGUISHER
  - FIRE BLANKET
- FIRE SIGNAGE**
- FIRE EXIT SIGN
  - FIRE EXIT DIRECTIONAL SIGN
  - DOUBLE SIDED FIRE EXIT SIGN
  - FIRE ACTION NOTICE
  - ILLUMINATED FIRE EXIT SIGN
- FIRE REFUGE**
- REFUGE AREA
  - REFUGE AREA WITH EVACUATION CHAIR
  - EVACUATION CHAIR
  - CALL ASSISTANCE POINT

DATE	DESCRIPTION	REV



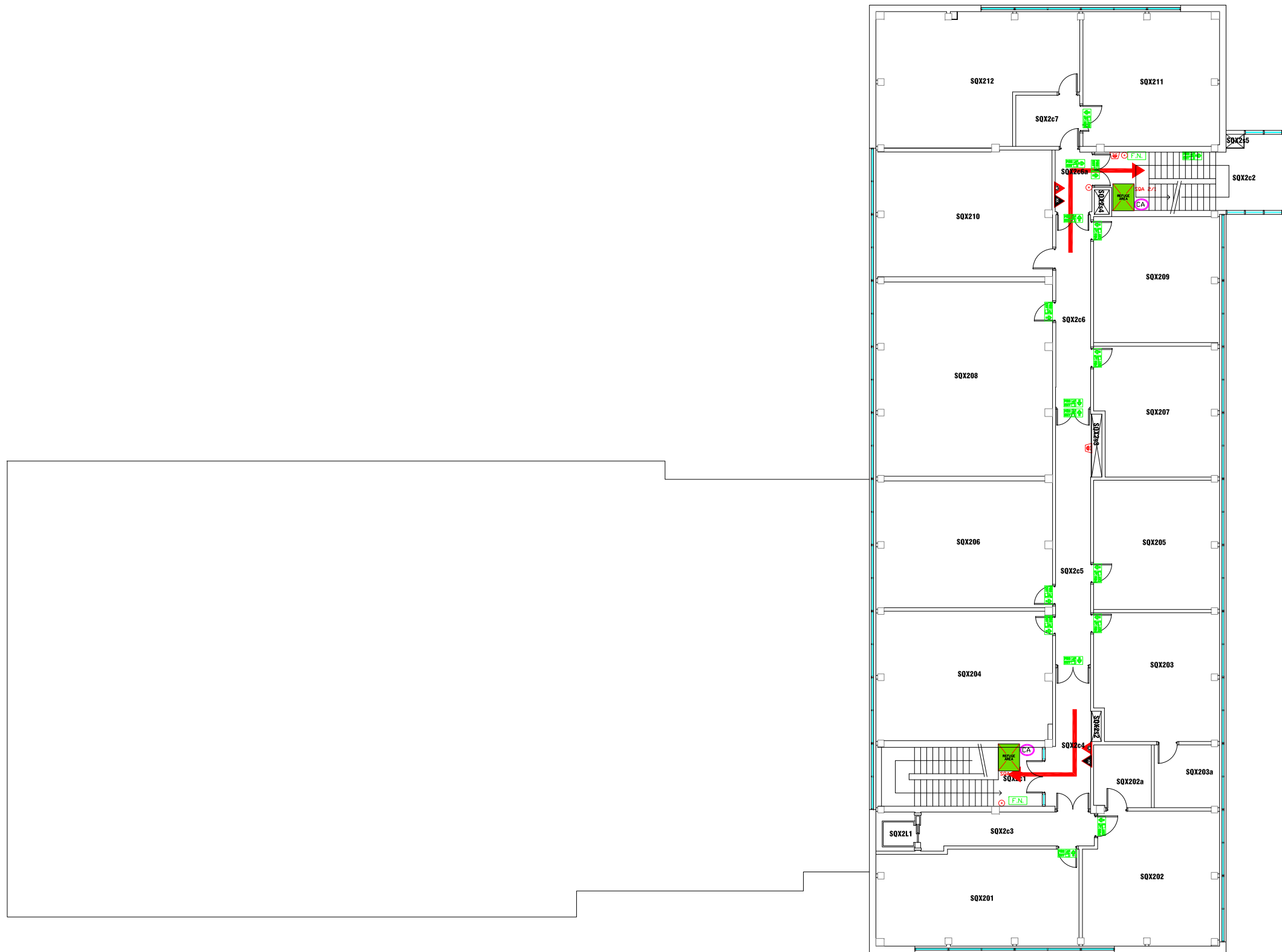
Campus Services  
 Pandon Building  
 Camden Street  
 Newcastle upon Tyne  
 NE1 8ST

Campus: CITY CENTRE  
 Building: SQUIRES ANNEXE  
 Title: FIRST FLOOR LEVEL

Scale:	Date: JULY 2019
NTS	Drawn:
	Issued:

Project No:

Drawing No:	Rev:
-------------	------



- FIRE EQUIPMENT**
- FIRE ALARM CALL POINT/BREAK GLASS
  - FIRE ALARM CONTROL PANEL
  - FIRE ALARM INTERFACE PANEL
  - UNSWITCHED FUSE SPUR
  - JUNCTION BOX
  - FIRE ALARM SOUNDER
  - FIRE ALARM BELL
  - VISUAL WARNING DEVICE
- FIRE EXTINGUISHERS**
- WATER EXTINGUISHER
  - CARBON DIOXIDE EXTINGUISHER
  - FOAM EXTINGUISHER
  - POWDER EXTINGUISHER
  - FIRE BLANKET
- FIRE SIGNAGE**
- FIRE EXIT SIGN
  - FIRE EXIT DIRECTIONAL SIGN
  - DOUBLE SIDED FIRE EXIT SIGN
  - FIRE ACTION NOTICE
  - ILLUMINATED FIRE EXIT SIGN
- FIRE REFUGE**
- REFUGE AREA
  - REFUGE AREA WITH EVACUATION CHAIR
  - EVACUATION CHAIR
  - CALL ASSISTANCE POINT

DATE	DESCRIPTION	REV
---	--	--



Campus Services  
Pandon Building  
Camden Street  
Newcastle upon Tyne  
NE1 8ST

Campus: CITY CENTRE  
Building: SQUIRES ANNEXE  
Title: SECOND FLOOR LEVEL

Scale:	Date: JULY 2019
NTS	Drawn:
	Issued:

Project No:

Drawing No: Rev: