

- FIRE EQUIPMENT**
- FIRE ALARM CALL POINT/BREAK GLASS
 - [FACP] FIRE ALARM CONTROL PANEL
 - [INT] FIRE ALARM INTERFACE PANEL
 - ▲ UNSWITCHED FUSE SPUR
 - [JB] JUNCTION BOX
 - [SND] FIRE ALARM SOUNDER
 - [BELL] FIRE ALARM BELL
 - [VWD] VISUAL WARNING DEVICE
 - FIRE EXTINGUISHERS**
 - ▲ WATER EXTINGUISHER
 - ▲ CARBON DIOXIDE EXTINGUISHER
 - ▲ FOAM EXTINGUISHER
 - ▲ POWDER EXTINGUISHER
 - ▲ FIRE BLANKET
 - FIRE SIGNAGE**
 - [EXIT] FIRE EXIT SIGN
 - [EXITD] FIRE EXIT DIRECTIONAL SIGN
 - [EXITDS] DOUBLE SIDED FIRE EXIT SIGN
 - [FAN] FIRE ACTION NOTICE
 - [EXITIL] ILLUMINATED FIRE EXIT SIGN

DATE	DESCRIPTION	REV
---	---	---



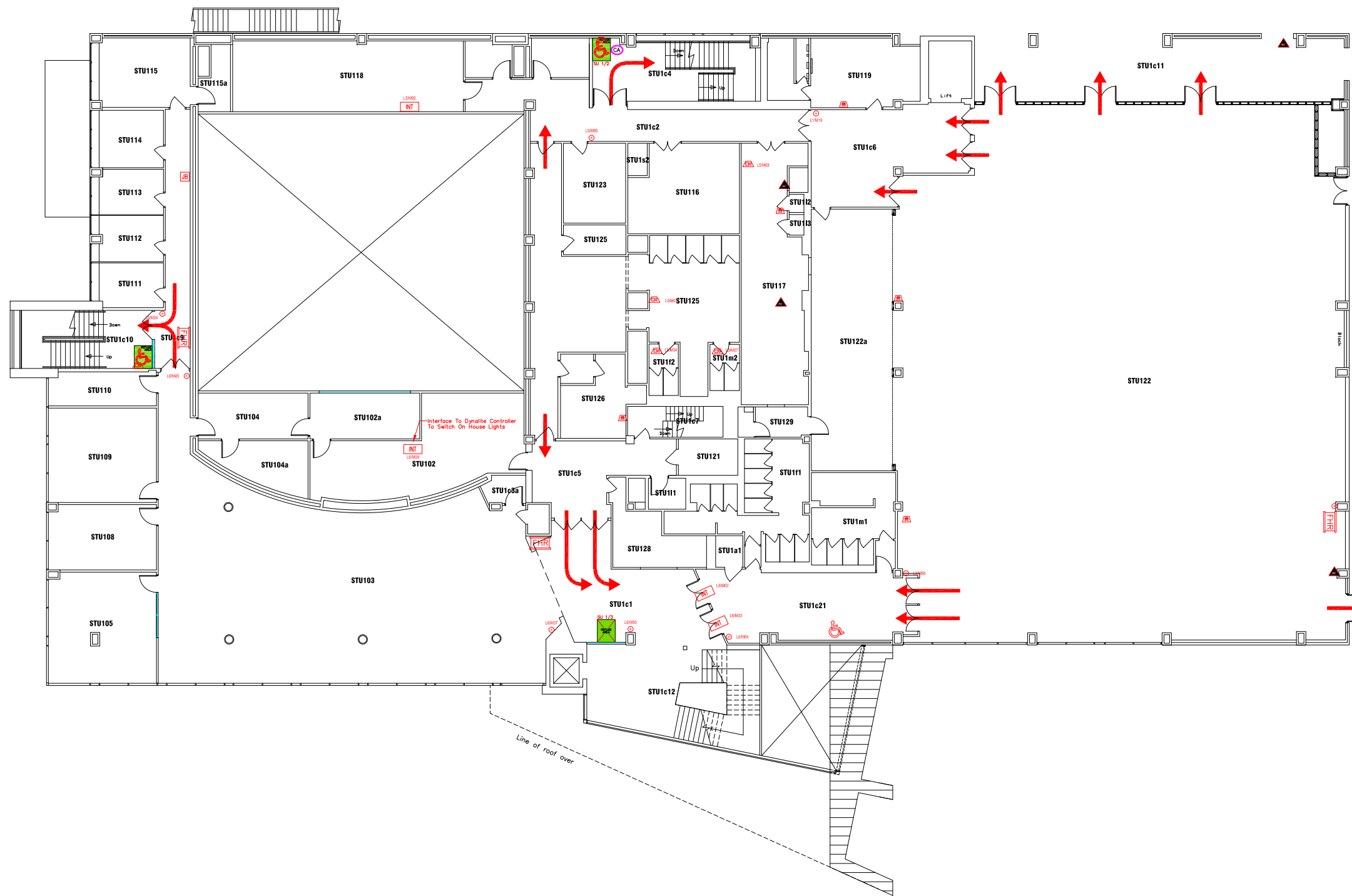
Campus Services
 Pandon Building
 Camden Street
 Newcastle upon Tyne
 NE1 8ST

Campus: CITY CENTRE
 Building: STUDENT UNION
 Title: GROUND FLOOR LEVEL

Scale:	Date: JULY 2019
NTS	Drawn:
	Issued:

Project No:

Drawing No:	Rev:
-------------	------



- FIRE EQUIPMENT**
- FIRE ALARM CALL POINT/BREAK GLASS
 - FIRE ALARM CONTROL PANEL
 - FIRE ALARM INTERFACE PANEL
 - UNSWITCHED FUSE SPUR
 - JUNCTION BOX
 - FIRE ALARM SOUNDER
 - FIRE ALARM BELL
 - VISUAL WARNING DEVICE
- FIRE EXTINGUISHERS**
- WATER EXTINGUISHER
 - CARBON DIOXIDE EXTINGUISHER
 - FOAM EXTINGUISHER
 - POWDER EXTINGUISHER
 - FIRE BLANKET
- FIRE SIGNAGE**
- FIRE EXIT SIGN
 - FIRE EXIT DIRECTIONAL SIGN
 - DOUBLE SIDED FIRE EXIT SIGN
 - FIRE ACTION NOTICE
 - ILLUMINATED FIRE EXIT SIGN
- FIRE REFUGE**
- REFUGE AREA
 - REFUGE AREA WITH EVACUATION CHAIR
 - EVACUATION CHAIR
 - CALL ASSISTANCE POINT

DATE	DESCRIPTION	REV
---	---	---



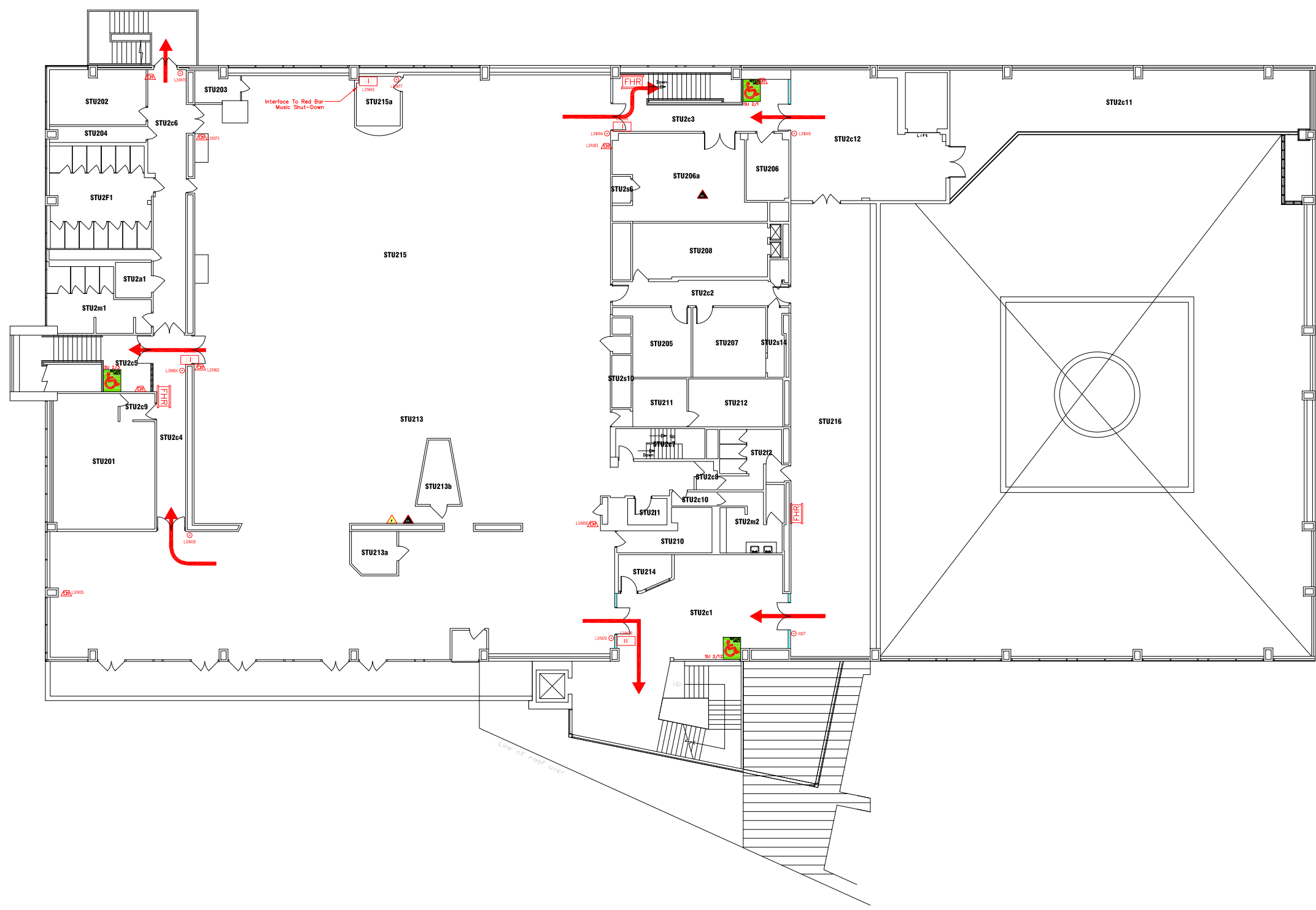
Campus Services
 Pandon Building
 Camden Street
 Newcastle upon Tyne
 NE1 8ST

Campus: CITY CENTRE
 Building: STUDENT UNION
 Title: FIRST FLOOR LEVEL

Scale:	Date: JULY 2019
NTS	Drawn:
	Issued:

Project No:

Drawing No:	Rev:
-------------	------



- FIRE EQUIPMENT**
- FIRE ALARM CALL POINT/BREAK GLASS
 - FIRE ALARM CONTROL PANEL
 - FIRE ALARM INTERFACE PANEL
 - UNSWITCHED FUSE SPUR
 - JUNCTION BOX
 - FIRE ALARM SOUNDER
 - FIRE ALARM BELL
 - VISUAL WARNING DEVICE
- FIRE EXTINGUISHERS**
- WATER EXTINGUISHER
 - CARBON DIOXIDE EXTINGUISHER
 - FOAM EXTINGUISHER
 - POWDER EXTINGUISHER
 - FIRE BLANKET
- FIRE SIGNAGE**
- FIRE EXIT SIGN
 - FIRE EXIT DIRECTIONAL SIGN
 - DOUBLE SIDED FIRE EXIT SIGN
 - FIRE ACTION NOTICE
 - ILLUMINATED FIRE EXIT SIGN
- FIRE REFUGE**
- REFUGE AREA
 - REFUGE AREA WITH EVACUATION CHAIR
 - EVACUATION CHAIR
 - CALL ASSISTANCE POINT

DATE	DESCRIPTION	REV
---	--	--



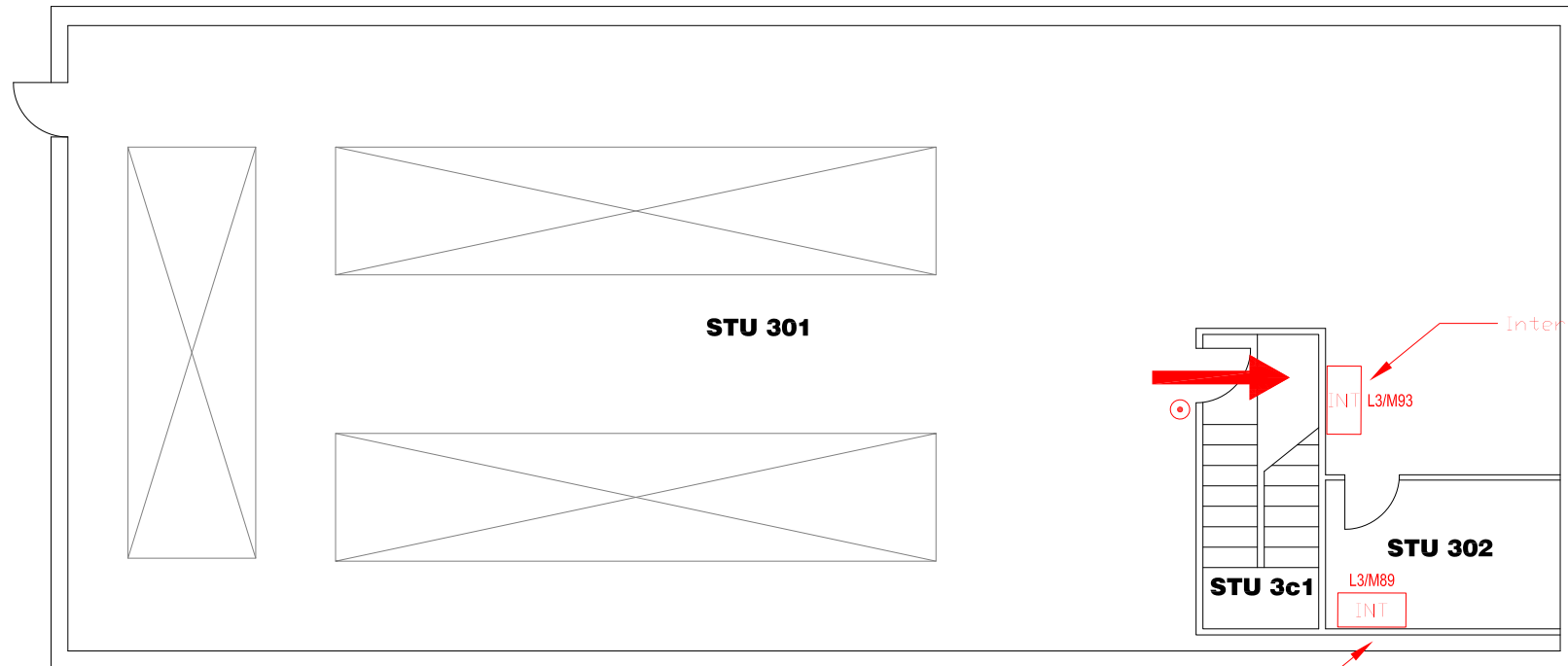
Campus Services
Pandon Building
Camden Street
Newcastle upon Tyne
NE1 8ST

Campus: CITY CENTRE
Building: STUDENT UNION
Title: SECOND FLOOR LEVEL









Scale:	Date: FEB 2018
NTS	Drawn:
	Issued:

Project No:

Drawing No:	Rev:
-------------	------



FIRE EQUIPMENT

-  FIRE ALARM CALL POINT/BREAK GLASS
-  FIRE ALARM CONTROL PANEL
-  FIRE ALARM INTERFACE PANEL
-  UNSWITCHED FUSE SPUR
-  JUNCTION BOX
-  FIRE ALARM SOUNDER
-  FIRE ALARM BELL
-  VISUAL WARNING DEVICE

DATE	DESCRIPTION	REV
---	--	--



Campus Services
 Pandon Building
 Camden Street
 Newcastle upon Tyne
 NE1 8ST

Campus: CITY CENTRE
 Building: STUDENT UNION
 Title: THIRD FLOOR LEVEL

Scale:	Date: FEB 2018
NTS	Drawn:
	Issued:

Project No:

Drawing No: Rev: