

# Panopto: Downloading Panopto at home.



**Northumbria  
University**  
NEWCASTLE

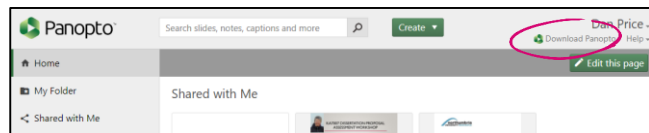
This guide is designed to inform you of how to download Panopto on your personal PC. Panopto recorder is pre-installed on university classroom PC's.

## Download the software

Navigate to [northumbria.hosted.panopto.com](http://northumbria.hosted.panopto.com). If you are not already signed into the Blackboard eLearning Portal, you will be prompted to enter your Northumbria ID and password.

You are taken to the Panopto portal Home page:

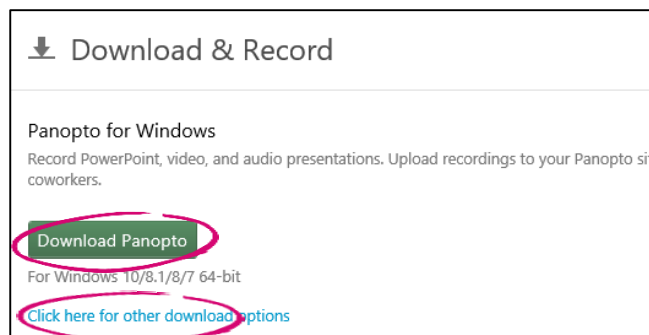
- 1 From the top-right hand corner of the screen, click **Download Panopto**.



- 2 The Download & Record window appears. Panopto will detect the operating system you are using and present you with the option to Download Panopto. If the correct version isn't listed, click the **Click here for other download options** link below.

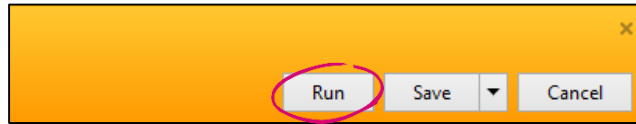
To begin the download, click **Download Panopto**.

**Note:** Panopto recorder is available for PC (Windows) and Apple Mac computers. This guide details the process of installing on a Windows PC.



## Installing the software

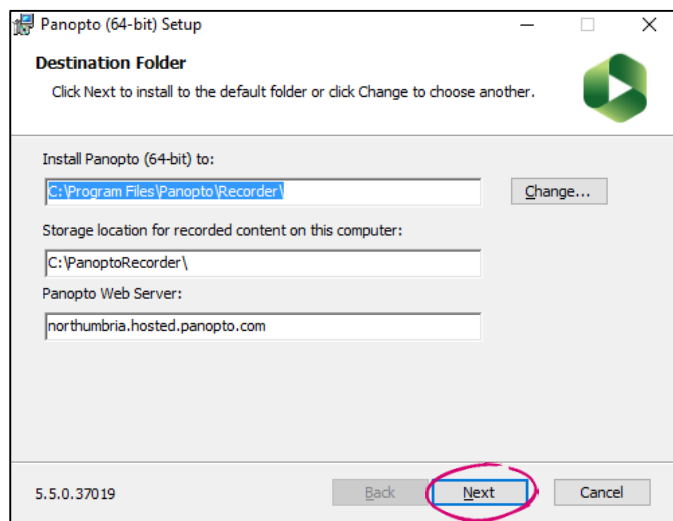
**3** Once the download begins, you will be prompted to **Run** or **Save** the Panopto recorder software. The prompt will vary depending on the web browser you are using. The screenshot below shows the prompt in Internet Explorer:



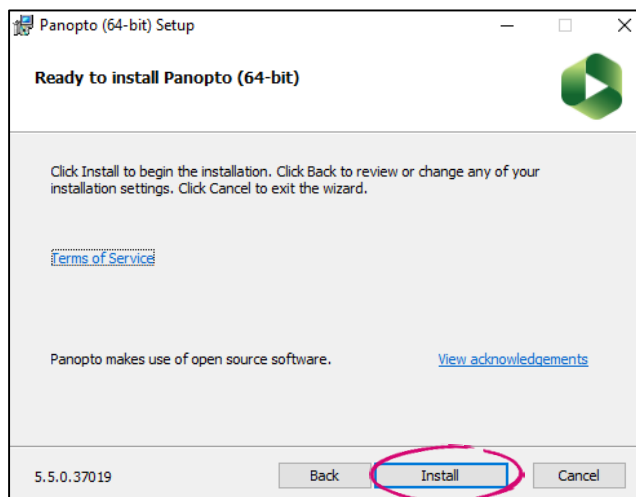
**4** You're presented with a setup window:

If required, you can change the install and storage locations, or leave them as default. Ensure the Panopto Web Server field is entered as Northumbria.hosted.panopto.com

To continue, click **Next**

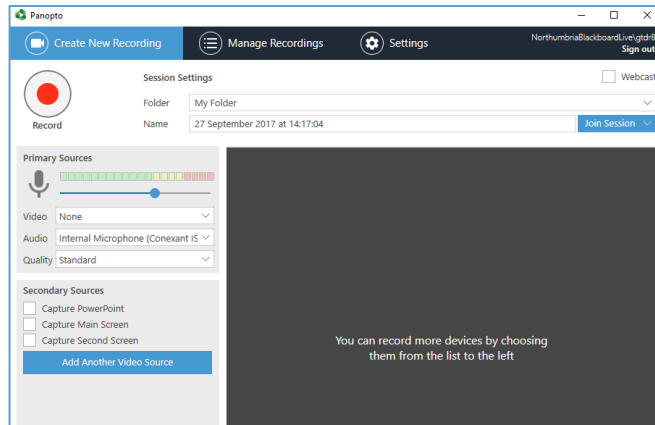


**5** You are prompted to accept the Terms of Service. If you agree, click **Install**




6 Once the installation is complete, Panopto recorder will open. If prompted to sign in, select the option for eLP Live. Sign in with your university credentials.

Panopto is now installed on your own computer and can be used in the usual manner. You will have access to the same folders as when you're on campus.



### IT Support - open 24 hours, 365 days a year

Email [it.help@northumbria.ac.uk](mailto:it.help@northumbria.ac.uk)  
Phone 0191 227 4242  
Chat [northumbria.ac.uk/itchat](http://northumbria.ac.uk/itchat)  
 [twitter.com/NorthumbriaIT](https://twitter.com/NorthumbriaIT)