

- FIRE EQUIPMENT**
- FIRE ALARM CALL POINT/BREAK GLASS
  - FIRE ALARM CONTROL PANEL
  - FIRE ALARM INTERFACE PANEL
  - △ UNSWITCHED FUSE SPUR
  - JUNCTION BOX
  - △ FIRE ALARM SOUNDER
  - △ FIRE ALARM BELL
  - △ VISUAL WARNING DEVICE
  - FIRE EXTINGUISHERS**
  - ▲ WATER EXTINGUISHER
  - ▲ CARBON DIOXIDE EXTINGUISHER
  - ▲ FOAM EXTINGUISHER
  - ▲ POWDER EXTINGUISHER
  - ▲ FIRE BLANKET

DATE	DESCRIPTION	REV
28.03.18	Alterations Ask4Help	-
		-
		-



Campus Services  
 Pandon Building  
 Camden Street  
 Newcastle upon Tyne  
 NE1 8ST

Campus: CITY CENTRE  
 Building: CITY CAMPUS EAST 1 (CCE1)  
 Title: FACULTY OF BUSINESS & LAW  
 BUILDING  
 GROUND FLOOR LEVEL

Scale:	Date: OCTOBER 2018
NTS	Drawn:
	Issued:

Project No:

Drawing No: Rev:





- FIRE EQUIPMENT**
- FIRE ALARM CALL POINT/BREAK GLASS
  - FIRE ALARM CONTROL PANEL
  - FIRE ALARM INTERFACE PANEL
  - ▲ UNSWITCHED FUSE SPUR
  - JUNCTION BOX
  - ▲ FIRE ALARM SOUNDER
  - ▲ FIRE ALARM BELL
  - ▲ VISUAL WARNING DEVICE
- FIRE EXTINGUISHERS**
- ▲ WATER EXTINGUISHER
  - ▲ CARBON DIOXIDE EXTINGUISHER
  - ▲ FOAM EXTINGUISHER
  - ▲ POWDER EXTINGUISHER
  - ▲ FIRE BLANKET
- FIRE REFUGE**
- REFUGE AREA
  - REFUGE AREA WITH EVACUATION CHAIR
  - EVACUATION CHAIR
  - CALL ASSISTANCE POINT

DATE	DESCRIPTION	REV
		-
		-



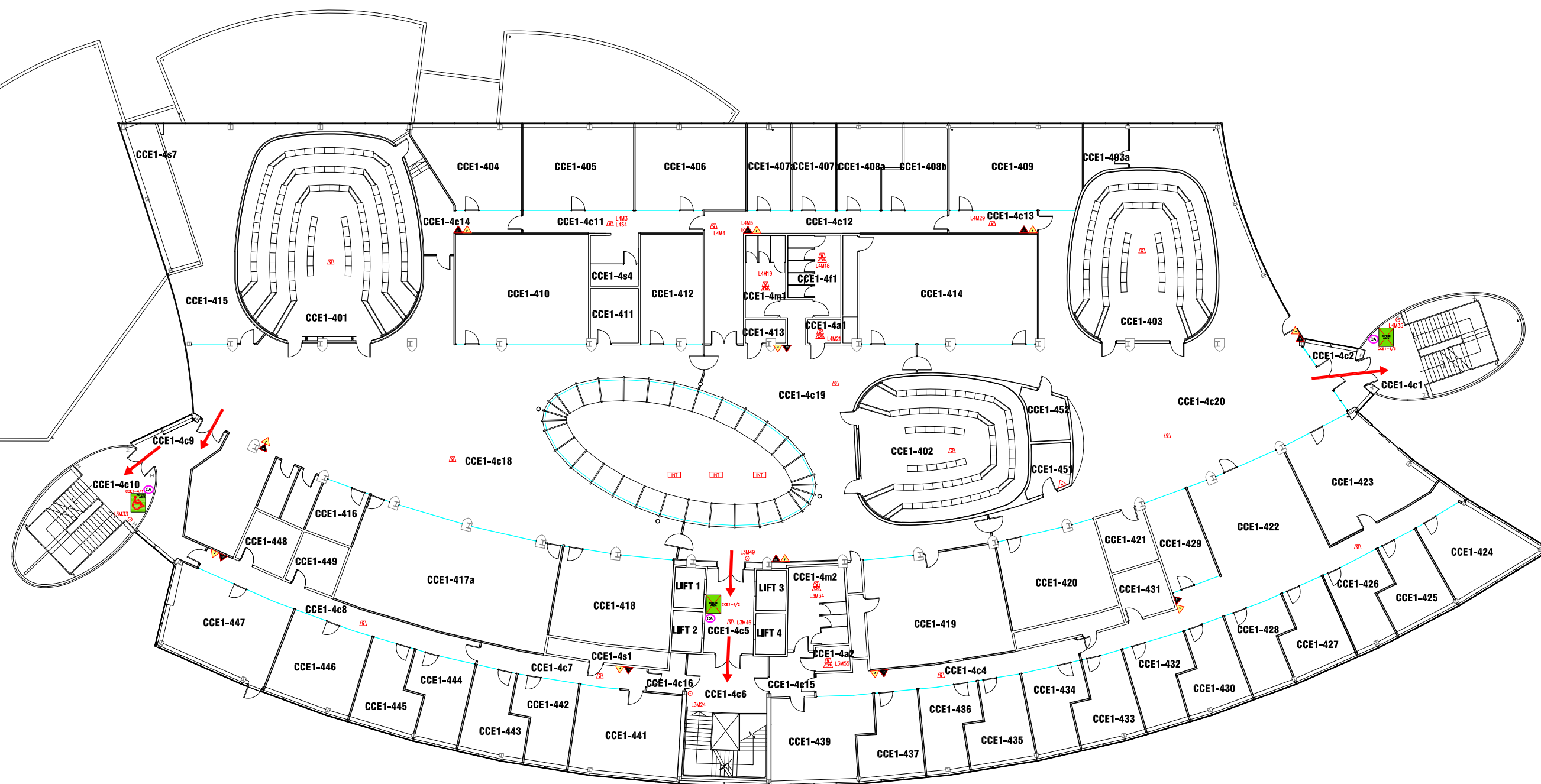
Campus Services  
Pandon Building  
Camden Street  
Newcastle upon Tyne  
NE1 8ST

Campus: CITY CENTRE  
Building: CITY CAMPUS EAST 1 (CCE1)  
Title: FACULTY OF BUSINESS & LAW BUILDING  
SECOND FLOOR LEVEL

Scale:	Date: OCTOBER 2018
NTS	Drawn:
	Issued:

Project No:

Drawing No:	Rev:
-------------	------



- FIRE EQUIPMENT**
- FIRE ALARM CALL POINT/BREAK GLASS
  - FIRE ALARM CONTROL PANEL
  - FIRE ALARM INTERFACE PANEL
  - UNSWITCHED FUSE SPUR
  - JUNCTION BOX
  - FIRE ALARM SOUNDER
  - FIRE ALARM BELL
  - VISUAL WARNING DEVICE
- FIRE EXTINGUISHERS**
- WATER EXTINGUISHER
  - CARBON DIOXIDE EXTINGUISHER
  - FOAM EXTINGUISHER
  - POWDER EXTINGUISHER
  - FIRE BLANKET
- FIRE REFUGE**
- REFUGE AREA
  - REFUGE AREA WITH EVACUATION CHAIR
  - EVACUATION CHAIR
  - CALL ASSISTANCE POINT

DATE	DESCRIPTION	REV
		-
		-



Campus Services  
Pandon Building  
Camden Street  
Newcastle upon Tyne  
NE1 8ST

Campus: CITY CENTRE  
Building: CITY CAMPUS EAST 1 (CCE1)  
Title: FACULTY OF BUSINESS & LAW  
BUILDING  
FOURTH FLOOR LEVEL

Scale:	Date: OCTOBER 2018
NTS	Drawn:
	Issued:

Project No:

Drawing No: Rev:



- FIRE EQUIPMENT**
- FIRE ALARM CALL POINT/BREAK GLASS
  - FIRE ALARM CONTROL PANEL
  - FIRE ALARM INTERFACE PANEL
  - UNSWITCHED FUSE SPUR
  - JUNCTION BOX
  - FIRE ALARM SOUNDER
  - FIRE ALARM BELL
  - VISUAL WARNING DEVICE
  - FIRE EXTINGUISHERS**
  - WATER EXTINGUISHER
  - CARBON DIOXIDE EXTINGUISHER
  - FOAM EXTINGUISHER
  - POWDER EXTINGUISHER
  - FIRE BLANKET
  - FIRE REFUGE**
  - REFUGE AREA
  - REFUGE AREA WITH EVACUATION CHAIR
  - EVACUATION CHAIR
  - CALL ASSISTANCE POINT

DATE	DESCRIPTION	REV



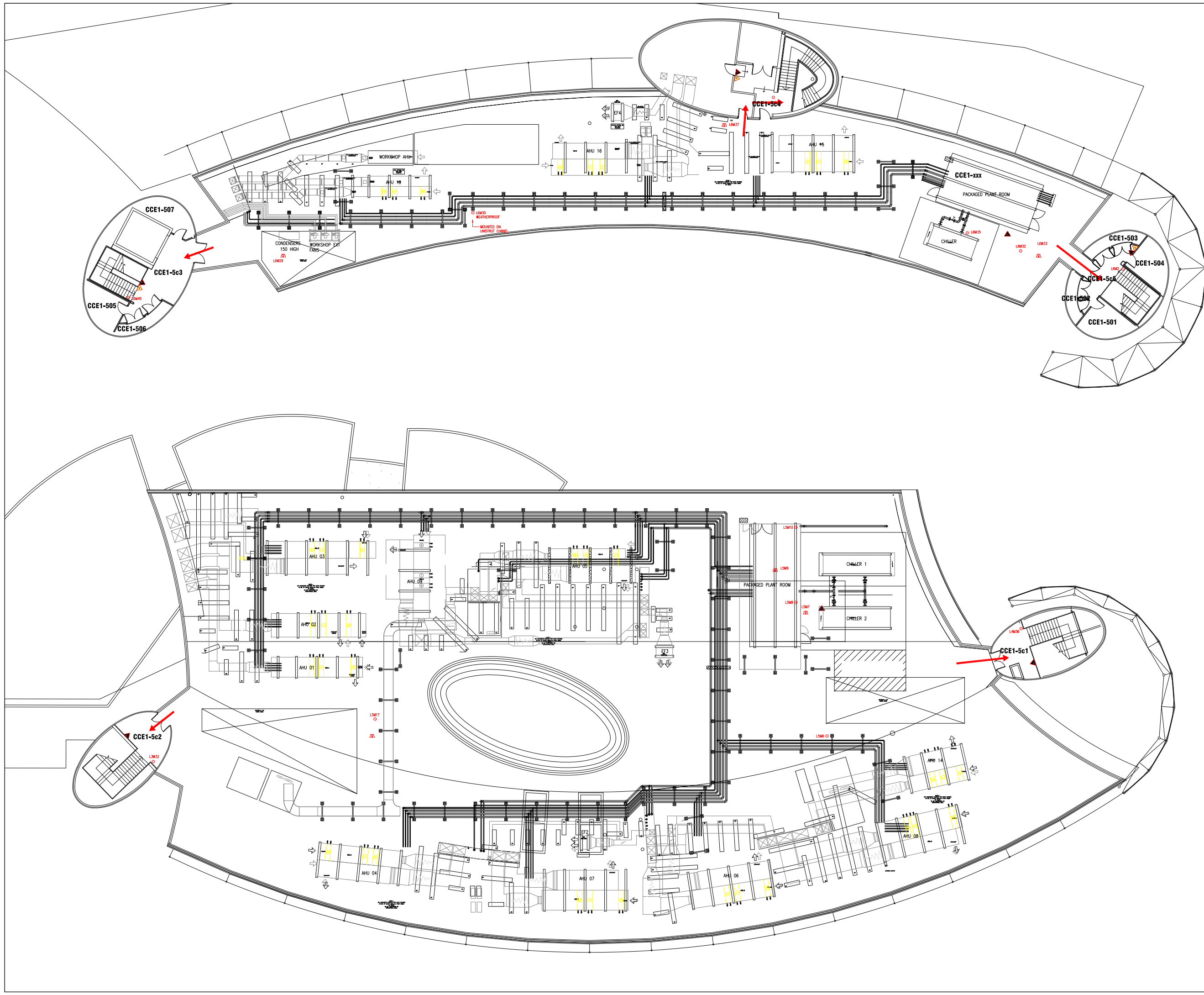
Campus Services  
 Pandon Building  
 Camden Street  
 Newcastle upon Tyne  
 NE1 8ST

Campus: CITY CENTRE  
 Building: CITY CAMPUS EAST 1 (CCE1)  
 Title: FACULTY OF BUSINESS & LAW  
 BUILDING  
 THIRD FLOOR LEVEL

Scale:	Date: OCTOBER 2018
NTS	Drawn:
	Issued:

Project No:

Drawing No:	Rev:
-------------	------



- FIRE EQUIPMENT**
- FIRE ALARM CALL POINT/BREAK GLASS
  - FIRE ALARM CONTROL PANEL
  - FIRE ALARM INTERFACE PANEL
  - ▲ UNSWITCHED FUSE SPUR
  - JUNCTION BOX
  - ▲ FIRE ALARM SOUNDER
  - ▲ FIRE ALARM BELL
  - ▲ VISUAL WARNING DEVICE
- FIRE EXTINGUISHERS**
- ▲ WATER EXTINGUISHER
  - ▲ CARBON DIOXIDE EXTINGUISHER
  - ▲ FOAM EXTINGUISHER
  - ▲ POWDER EXTINGUISHER
  - ▲ FIRE BLANKET

DATE	DESCRIPTION	REV
23.03.18	Fire Damper Tags Added	-



Campus Services  
 Pandon Building  
 Camden Street  
 Newcastle upon Tyne  
 NE1 8ST

Campus: CITY CENTRE  
 Building: CITY CAMPUS EAST 1 & 2  
 Title: ROOF LAYOUT

Scale:	Date: MAR 2018
NTS	Drawn:
	Issued:

Project No:	
Drawing No:	Rev: