

- FIRE EQUIPMENT**
- FIRE ALARM CALL POINT/BREAK GLASS
 - FIRE ALARM CONTROL PANEL
 - FIRE ALARM INTERFACE PANEL
 - UNSWITCHED FUSE SPUR
 - JUNCTION BOX
 - FIRE ALARM SOUNDER
 - FIRE ALARM BELL
 - VISUAL WARNING DEVICE
- FIRE EXTINGUISHERS**
- WATER EXTINGUISHER
 - CARBON DIOXIDE EXTINGUISHER
 - FOAM EXTINGUISHER
 - POWDER EXTINGUISHER
 - FIRE BLANKET
- FIRE SIGNAGE**
- FIRE EXIT SIGN
 - FIRE EXIT DIRECTIONAL SIGN
 - DOUBLE SIDED FIRE EXIT SIGN
 - FIRE ACTION NOTICE
 - ILLUMINATED FIRE EXIT SIGN
- FIRE REFUGE**
- REFUGE AREA
 - REFUGE AREA WITH EVACUATION CHAIR
 - EVACUATION CHAIR
 - CALL ASSISTANCE POINT

DATE	DESCRIPTION	REV
		-



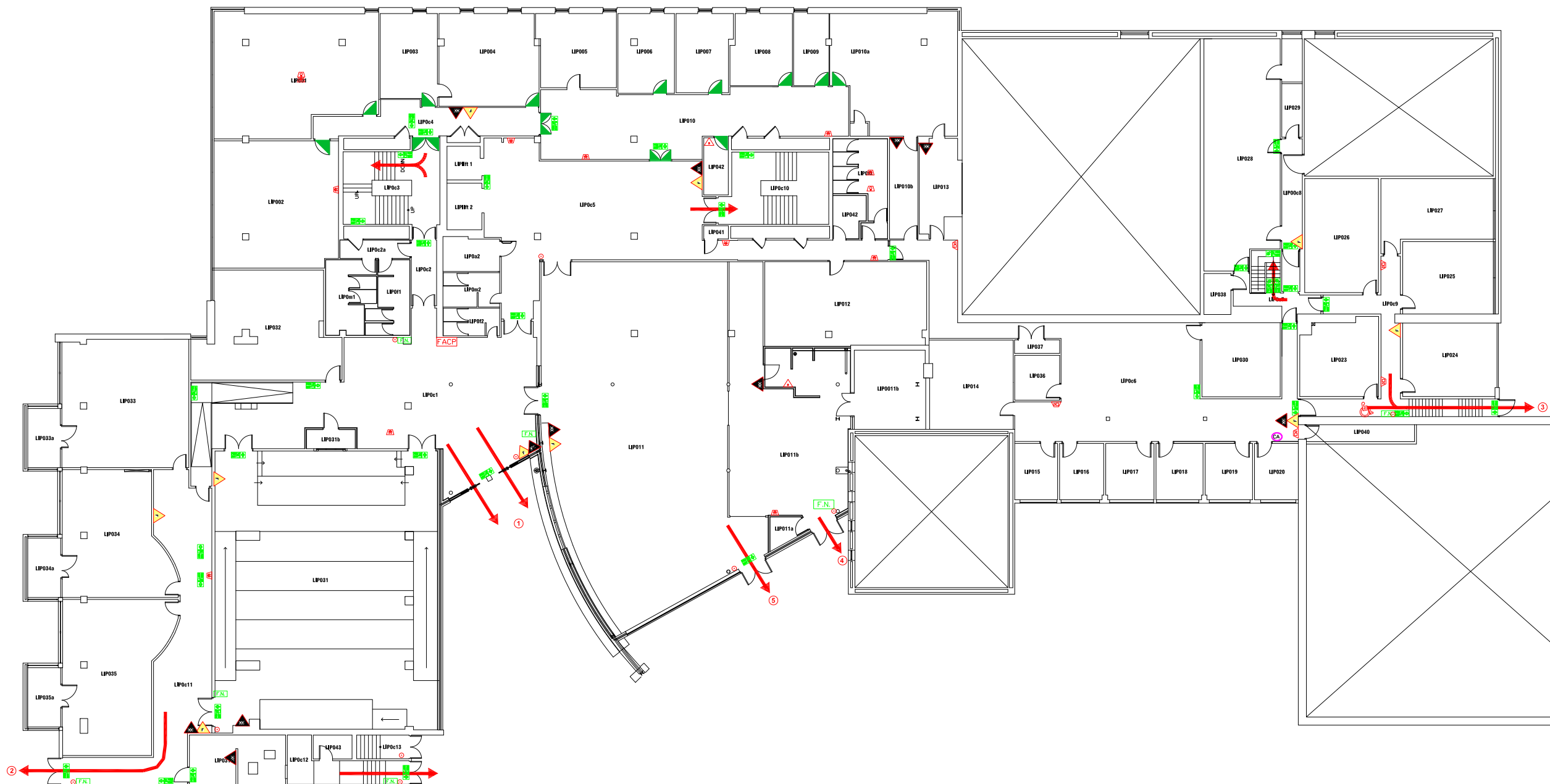
Campus Services
 Pandon Building
 Camden Street
 Newcastle upon Tyne
 NE1 8ST

Campus: CITY CENTRE
 Building: LIPMAN
 Title: BASEMENT LEVEL

Scale:	Date: JULY 2019
NTS	Drawn:
	Issued:

Project No:

Drawing No:	Rev:
-------------	------



- FIRE EQUIPMENT**
- FIRE ALARM CALL POINT/BREAK GLASS
 - ▭ FIRE ALARM CONTROL PANEL
 - ▭ FIRE ALARM INTERFACE PANEL
 - ▲ UNSWITCHED FUSE SPUR
 - ▭ JUNCTION BOX
 - ▲ FIRE ALARM SOUNDER
 - ▲ FIRE ALARM BELL
 - ▲ VISUAL WARNING DEVICE
- FIRE EXTINGUISHERS**
- ▲ WATER EXTINGUISHER
 - ▲ CARBON DIOXIDE EXTINGUISHER
 - ▲ FOAM EXTINGUISHER
 - ▲ POWDER EXTINGUISHER
 - ▲ FIRE BLANKET
- FIRE SIGNAGE**
- ▭ FIRE EXIT SIGN
 - ▭ FIRE EXIT DIRECTIONAL SIGN
 - ▭ DOUBLE SIDED FIRE EXIT SIGN
 - ▭ FIRE ACTION NOTICE
 - ▭ ILLUMINATED FIRE EXIT SIGN
- FIRE REFUGE**
- ▭ REFUGE AREA
 - ▭ REFUGE AREA WITH EVACUATION CHAIR
 - ♿ EVACUATION CHAIR
 - Ⓜ CALL ASSISTANCE POINT

DATE	DESCRIPTION	REV
		-
		-
		-



Campus Services
 Pandon Building
 Camden Street
 Newcastle upon Tyne
 NE1 8ST

Campus: CITY CENTRE
 Building: LIPMAN
 Title: GROUND FLOOR LEVEL

Scale:	Date: JULY 2019
NTS	Drawn:
	Issued:

Project No:	
Drawing No:	Rev:



- FIRE EQUIPMENT**
- FIRE ALARM CALL POINT/BREAK GLASS
 - FIRE ALARM CONTROL PANEL
 - FIRE ALARM INTERFACE PANEL
 - UNSWITCHED FUSE SPUR
 - JUNCTION BOX
 - FIRE ALARM SOUNDER
 - FIRE ALARM BELL
 - VISUAL WARNING DEVICE
- FIRE EXTINGUISHERS**
- WATER EXTINGUISHER
 - CARBON DIOXIDE EXTINGUISHER
 - FOAM EXTINGUISHER
 - POWDER EXTINGUISHER
 - FIRE BLANKET
- FIRE SIGNAGE**
- FIRE EXIT SIGN
 - FIRE EXIT DIRECTIONAL SIGN
 - DOUBLE SIDED FIRE EXIT SIGN
 - FIRE ACTION NOTICE
 - ILLUMINATED FIRE EXIT SIGN
- FIRE REFUGE**
- REFUGE AREA
 - REFUGE AREA WITH EVACUATION CHAIR
 - EVACUATION CHAIR
 - CALL ASSISTANCE POINT

DATE	DESCRIPTION	REV
		-
		-
		-



Campus Services
 Pandon Building
 Camden Street
 Newcastle upon Tyne
 NE1 8ST

Campus: CITY CENTRE
 Building: LIPMAN
 Title: FIRST FLOOR LEVEL

Scale:	Date: JULY 2019
NTS	Drawn:
	Issued:

Project No:

Drawing No:	Rev:
-------------	------



- FIRE EQUIPMENT**
- FIRE ALARM CALL POINT/BREAK GLASS
 - FIRE ALARM CONTROL PANEL
 - FIRE ALARM INTERFACE PANEL
 - UNSWITCHED FUSE SPUR
 - JUNCTION BOX
 - FIRE ALARM SOUNDER
 - FIRE ALARM BELL
 - VISUAL WARNING DEVICE
- FIRE EXTINGUISHERS**
- WATER EXTINGUISHER
 - CARBON DIOXIDE EXTINGUISHER
 - FOAM EXTINGUISHER
 - POWDER EXTINGUISHER
 - FIRE BLANKET
- FIRE SIGNAGE**
- FIRE EXIT SIGN
 - FIRE EXIT DIRECTIONAL SIGN
 - DOUBLE SIDED FIRE EXIT SIGN
 - FIRE ACTION NOTICE
 - ILLUMINATED FIRE EXIT SIGN
- FIRE REFUGE**
- REFUGE AREA
 - REFUGE AREA WITH EVACUATION CHAIR
 - EVACUATION CHAIR
 - CALL ASSISTANCE POINT

DATE	DESCRIPTION	REV
		-
		-



Campus Services
 Pandon Building
 Camden Street
 Newcastle upon Tyne
 NE1 8ST

Campus: CITY CENTRE
 Building: LIPMAN
 Title: SECOND FLOOR LEVEL

Scale:	Date: JULY 2019
NTS	Drawn:
	Issued:

Project No:

Drawing No:	Rev:
-------------	------



- FIRE EQUIPMENT**
- FIRE ALARM CALL POINT/BREAK GLASS
 - FIRE ALARM CONTROL PANEL
 - FIRE ALARM INTERFACE PANEL
 - UNSWITCHED FUSE SPUR
 - JUNCTION BOX
 - FIRE ALARM SOUNDER
 - FIRE ALARM BELL
 - VISUAL WARNING DEVICE
- FIRE EXTINGUISHERS**
- WATER EXTINGUISHER
 - CARBON DIOXIDE EXTINGUISHER
 - FOAM EXTINGUISHER
 - POWDER EXTINGUISHER
 - FIRE BLANKET
- FIRE SIGNAGE**
- FIRE EXIT SIGN
 - FIRE EXIT DIRECTIONAL SIGN
 - DOUBLE SIDED FIRE EXIT SIGN
 - FIRE ACTION NOTICE
 - ILLUMINATED FIRE EXIT SIGN
- FIRE REFUGE**
- REFUGE AREA
 - REFUGE AREA WITH EVACUATION CHAIR
 - EVACUATION CHAIR
 - CALL ASSISTANCE POINT

DATE	DESCRIPTION	REV
		-
		-



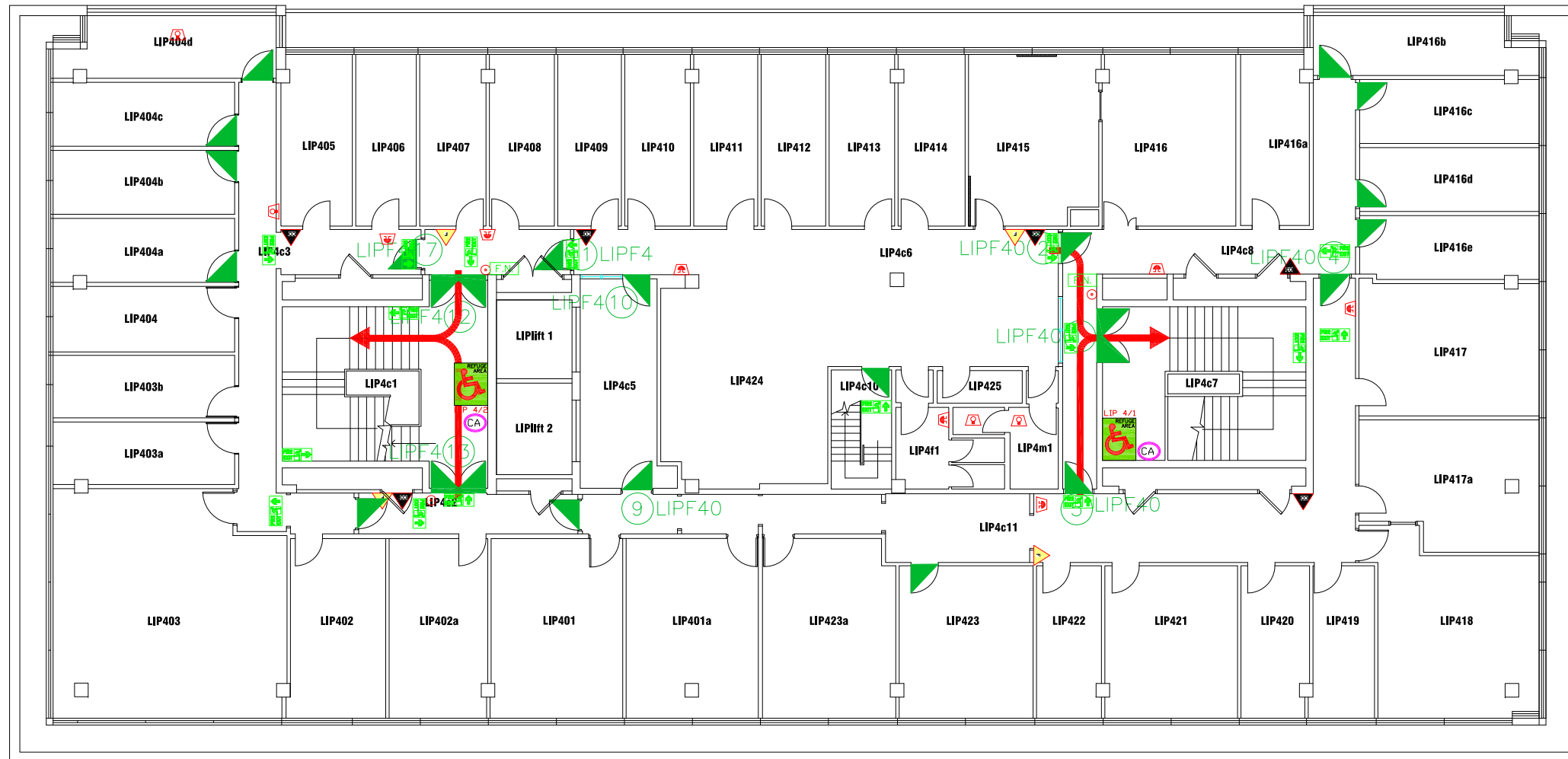
Campus Services
 Pandon Building
 Camden Street
 Newcastle upon Tyne
 NE1 8ST

Campus: CITY CENTRE
 Building: LIPMAN
 Title: THIRD FLOOR LEVEL

Scale:	Date: JULY 2019
NTS	Drawn:
	Issued:

Project No:

Drawing No:	Rev:
-------------	------



- FIRE EQUIPMENT**
- FIRE ALARM CALL POINT/BREAK GLASS
 - FIRE ALARM CONTROL PANEL
 - FIRE ALARM INTERFACE PANEL
 - UNSWITCHED FUSE SPUR
 - JUNCTION BOX
 - FIRE ALARM SOUNDER
 - FIRE ALARM BELL
 - VISUAL WARNING DEVICE
- FIRE EXTINGUISHERS**
- WATER EXTINGUISHER
 - CARBON DIOXIDE EXTINGUISHER
 - FOAM EXTINGUISHER
 - POWDER EXTINGUISHER
 - FIRE BLANKET
- FIRE SIGNAGE**
- FIRE EXIT SIGN
 - FIRE EXIT DIRECTIONAL SIGN
 - DOUBLE SIDED FIRE EXIT SIGN
 - FIRE ACTION NOTICE
 - ILLUMINATED FIRE EXIT SIGN

- FIRE REFUGE**
- REFUGE AREA
 - REFUGE AREA WITH EVACUATION CHAIR
 - EVACUATION CHAIR
 - CALL ASSISTANCE POINT

DATE	DESCRIPTION	REV
		-
		-



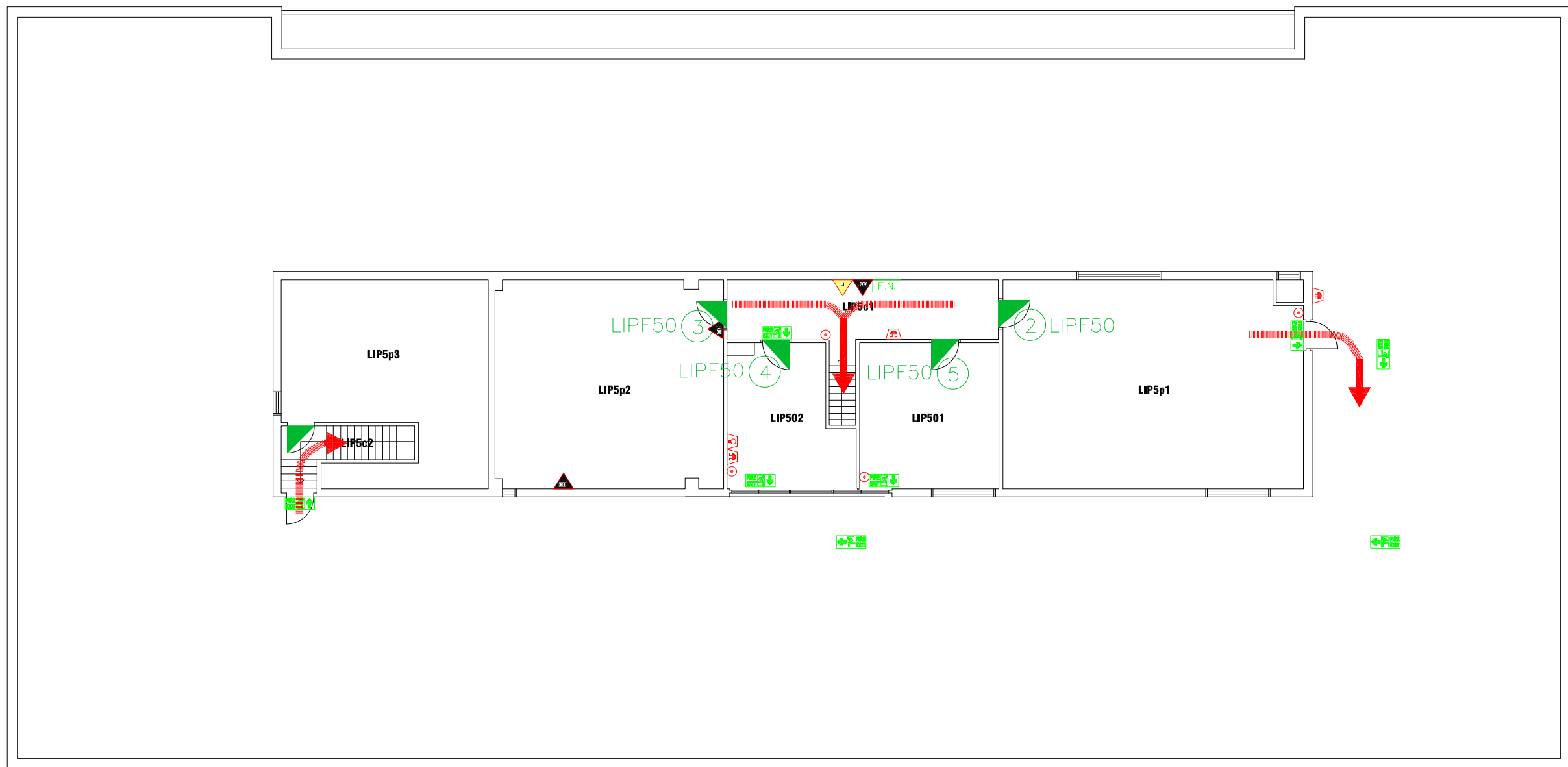
Campus Services
 Pandon Building
 Camden Street
 Newcastle upon Tyne
 NE1 8ST

Campus: CITY CENTRE
 Building: LIPMAN
 Title: FOURTH FLOOR LEVEL









Scale:	Date: JULY 2019
NTS	Drawn:
	Issued:

Project No:






Drawing No:	Rev:
-------------	------








FIRE EQUIPMENT

-  FIRE ALARM CALL POINT/BREAK GLASS
-  FIRE ALARM CONTROL PANEL
-  FIRE ALARM INTERFACE PANEL
-  UNSWITCHED FUSE SPUR
-  JUNCTION BOX
-  FIRE ALARM SOUNDER
-  FIRE ALARM BELL
-  VISUAL WARNING DEVICE

FIRE EXTINGUISHERS

-  WATER EXTINGUISHER
-  CARBON DIOXIDE EXTINGUISHER
-  FOAM EXTINGUISHER
-  POWDER EXTINGUISHER
-  FIRE BLANKET

FIRE SIGNAGE

-  FIRE EXIT SIGN
-  FIRE EXIT DIRECTIONAL SIGN
-  DOUBLE SIDED FIRE EXIT SIGN
-  FIRE ACTION NOTICE
-  ILLUMINATED FIRE EXIT SIGN

DATE	DESCRIPTION	REV
		-



Campus Services
 Pandon Building
 Camden Street
 Newcastle upon Tyne
 NE1 8ST

Campus: CITY CENTRE
 Building: LIPMAN
 Title: FIFTH FLOOR LEVEL

Scale:	Date: JULY 2019
NTS	Drawn:
	Issued:

Project No:

Drawing No: Rev: