



















FIRE EQUIPMENT

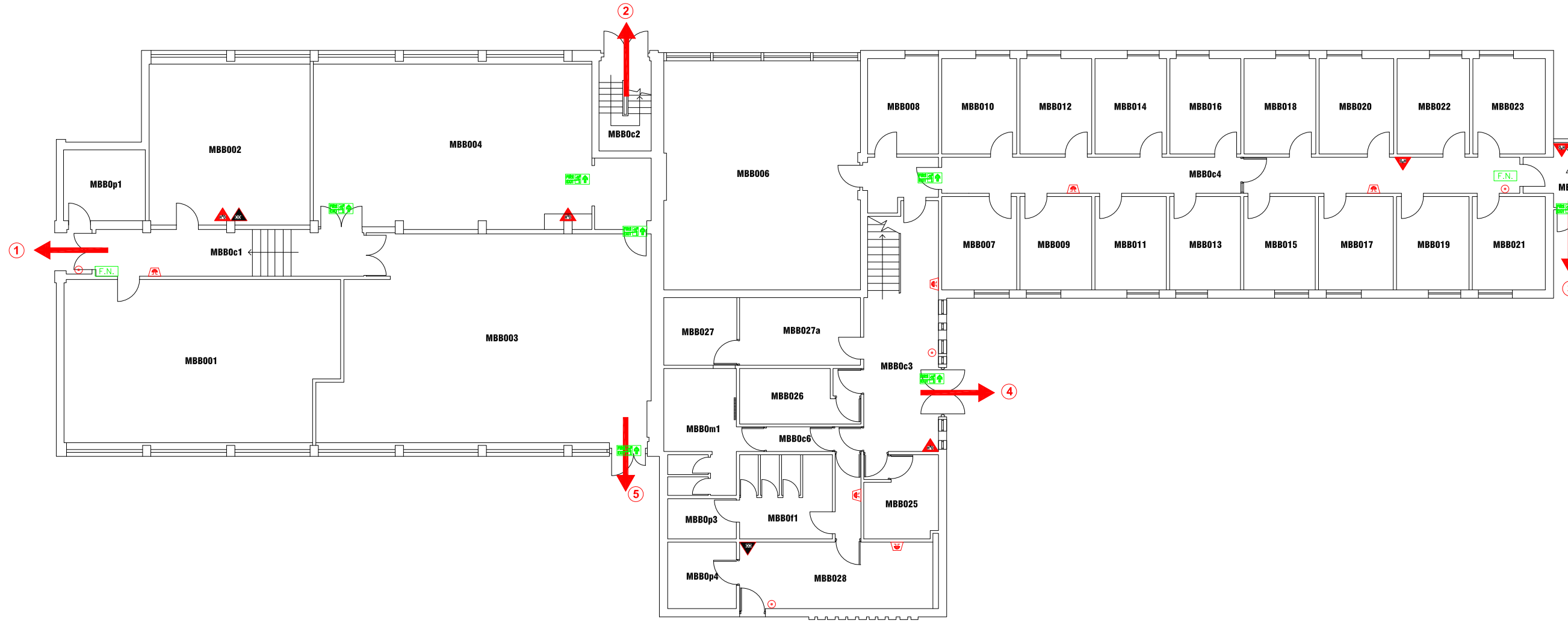
-  FIRE ALARM CALL POINT/BREAK GLASS
-  FIRE ALARM CONTROL PANEL
-  FIRE ALARM INTERFACE PANEL
-  UNSWITCHED FUSE SPUR
-  JUNCTION BOX
-  FIRE ALARM SOUNDER
-  FIRE ALARM BELL
-  VISUAL WARNING DEVICE

FIRE EXTINGUISHERS

-  WATER EXTINGUISHER
-  CARBON DIOXIDE EXTINGUISHER
-  FOAM EXTINGUISHER
-  POWDER EXTINGUISHER
-  FIRE BLANKET

FIRE SIGNAGE

-  FIRE EXIT SIGN
-  FIRE EXIT DIRECTIONAL SIGN
-  DOUBLE SIDED FIRE EXIT SIGN
-  FIRE ACTION NOTICE
-  ILLUMINATED FIRE EXIT SIGN



DATE	DESCRIPTION	REV
---	--	--



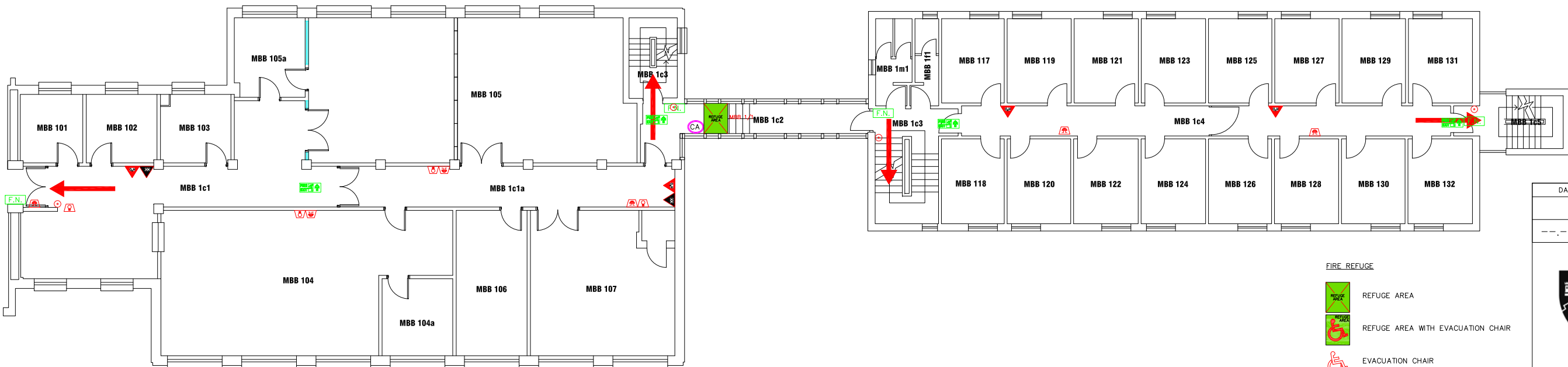
Campus Services
 Pandon Building
 Camden Street
 Newcastle upon Tyne
 NE1 8ST

Campus: COACH LANE
 Building: MAIN BUILDING BLOCK B
 Title: GROUND FLOOR LEVEL

Scale:	Date: JULY 2019
NTS	Drawn:
	Issued:

Project No:

Drawing No:	Rev:
-------------	------



- FIRE EQUIPMENT**
- FIRE ALARM CALL POINT/BREAK GLASS
 - FIRE ALARM CONTROL PANEL
 - FIRE ALARM INTERFACE PANEL
 - UNSWITCHED FUSE SPUR
 - JUNCTION BOX
 - FIRE ALARM SOUNDER
 - FIRE ALARM BELL
 - VISUAL WARNING DEVICE
- FIRE EXTINGUISHERS**
- WATER EXTINGUISHER
 - CARBON DIOXIDE EXTINGUISHER
 - FOAM EXTINGUISHER
 - POWDER EXTINGUISHER
 - FIRE BLANKET
- FIRE SIGNAGE**
- FIRE EXIT SIGN
 - FIRE EXIT DIRECTIONAL SIGN
 - DOUBLE SIDED FIRE EXIT SIGN
 - FIRE ACTION NOTICE
 - ILLUMINATED FIRE EXIT SIGN

- FIRE REFUGE**
- REFUGE AREA
 - REFUGE AREA WITH EVACUATION CHAIR
 - EVACUATION CHAIR
 - CALL ASSISTANCE POINT

DATE	DESCRIPTION	REV
---	---	---



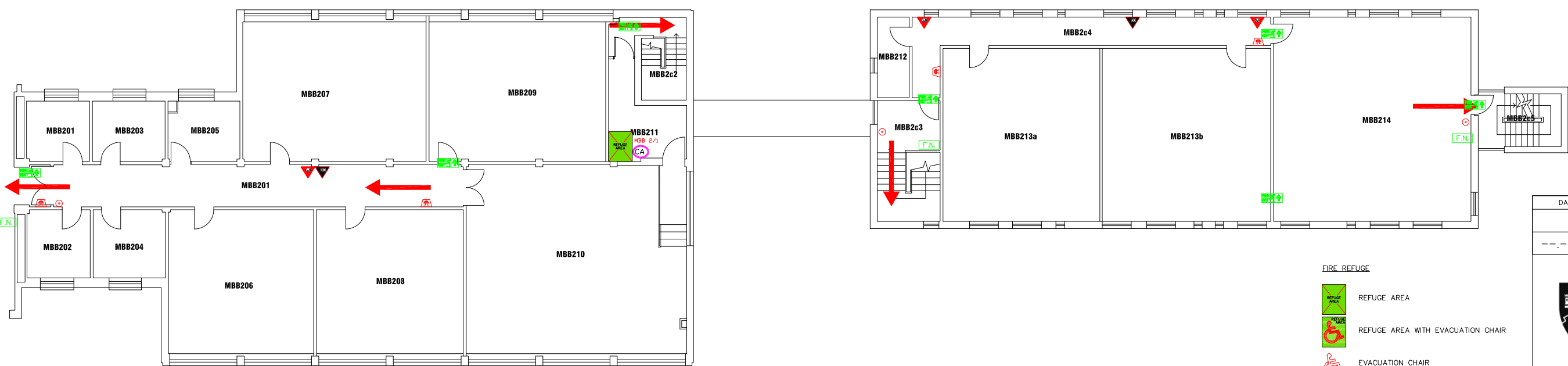
Campus Services
 Pandon Building
 Camden Street
 Newcastle upon Tyne
 NE1 8ST

Campus: COACH LANE
 Building: MAIN BUILDING BLOCK B
 Title: FIRST FLOOR LEVEL

Scale:	Date: JULY 2019
NTS	Drawn:
	Issued:

Project No:

Drawing No:	Rev:
-------------	------



- FIRE EQUIPMENT**
- FIRE ALARM CALL POINT/BREAK GLASS
 - FIRE ALARM CONTROL PANEL
 - FIRE ALARM INTERFACE PANEL
 - UNSWITCHED FUSE SPUR
 - JUNCTION BOX
 - FIRE ALARM SOUNDER
 - FIRE ALARM BELL
 - VISUAL WARNING DEVICE
- FIRE EXTINGUISHERS**
- WATER EXTINGUISHER
 - CARBON DIOXIDE EXTINGUISHER
 - FOAM EXTINGUISHER
 - POWDER EXTINGUISHER
 - FIRE BLANKET
- FIRE SIGNAGE**
- FIRE EXIT SIGN
 - FIRE EXIT DIRECTIONAL SIGN
 - DOUBLE SIDED FIRE EXIT SIGN
 - FIRE ACTION NOTICE
 - ILLUMINATED FIRE EXIT SIGN

- FIRE REFUGE**
- REFUGE AREA
 - REFUGE AREA WITH EVACUATION CHAIR
 - EVACUATION CHAIR
 - CALL ASSISTANCE POINT

DATE	DESCRIPTION	REV
---	---	---



Campus Services
 Pandon Building
 Camden Street
 Newcastle upon Tyne
 NE1 8ST

Campus: COACH LANE
 Building: MAIN BUILDING BLOCK B
 Title: SECOND FLOOR LEVEL

Scale:	Date: JULY 2019
NTS	Drawn:
	Issued:

Project No:

Drawing No:	Rev:
-------------	------