

DATE	DESCRIPTION	REV
---	-	-



Northumbria University
NEWCASTLE

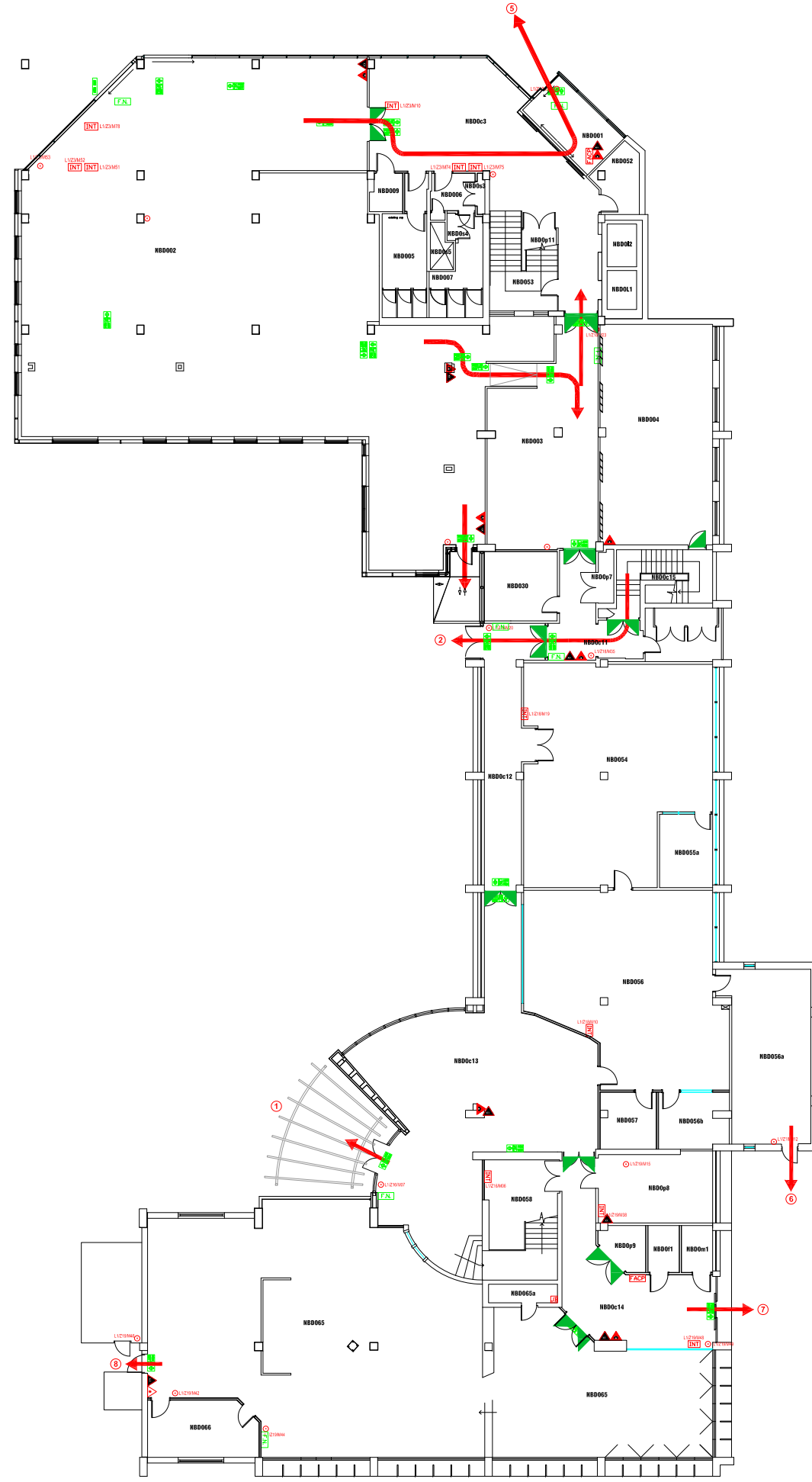
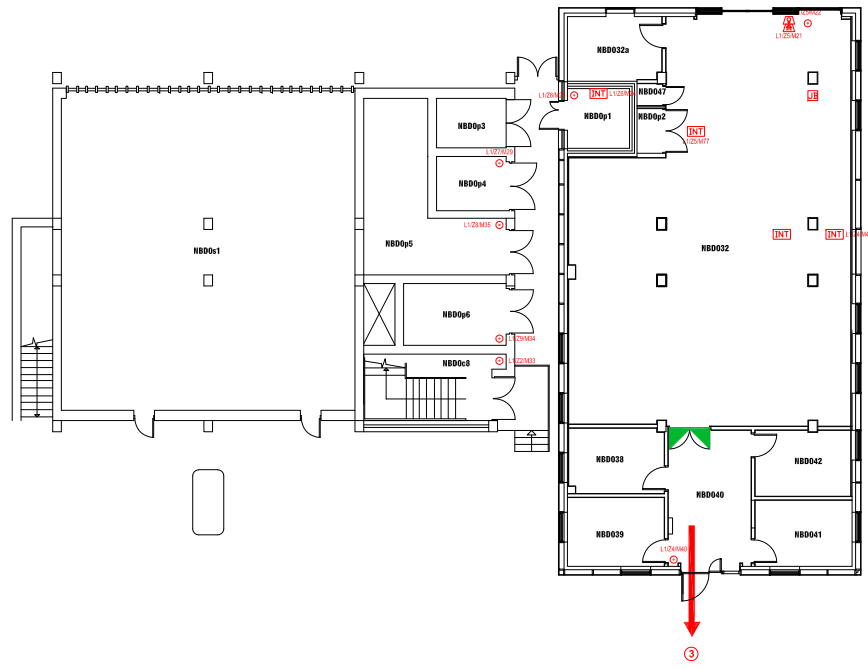
Campus Services
Pandon Building
Camden Street
Newcastle upon Tyne
NE1 8ST

Campus: CITY CENTRE
Building: NORTHUMBERLAND
Title: BASEMENT LEVEL


Scale:	Date: APRIL 2019
NTS	Drawn:
	Issued:

Project No:

Drawing No: Rev:



- FIRE EXTINGUISHERS
 - ▲ WATER EXTINGUISHER
 - ▲ CARBON DIOXIDE EXTINGUISHER
 - ▲ FOAM EXTINGUISHER
 - ▲ POWDER EXTINGUISHER
 - ▲ FIRE BLANKET
- FIRE EQUIPMENT
 - FIRE ALARM CALL POINT/BREAK GLASS
 - FCP FIRE ALARM CONTROL PANEL
 - INT FIRE ALARM INTERFACE PANEL
 - ▲ UNSWITCHED FUSE SPUR
 - JB JUNCTION BOX
 - ▲ FIRE ALARM SOUNDER
 - ▲ FIRE ALARM BELL
 - ▲ VISUAL WARNING DEVICE
- FIRE SIGNAGE
 - ES FIRE EXIT SIGN
 - ESD FIRE EXIT DIRECTIONAL SIGN
 - ESDS DOUBLE SIDED FIRE EXIT SIGN
 - FN FIRE ACTION NOTICE
 - ESL ILLUMINATED FIRE EXIT SIGN

DATE	DESCRIPTION	REV
		-
 Northumbria University NEWCASTLE		
Campus Services Pandon Building Camden Street Newcastle upon Tyne NE1 8ST		
Campus: CITY CENTRE Building: NORTHUMBERLAND Title: GROUND FLOOR LEVEL		
Scale:	Date: APRIL 2019	
NTS	Drawn:	
	Issued:	
Project No:		
Drawing No:		Rev:



- FIRE EQUIPMENT**
- FIRE ALARM CALL POINT/BREAK GLASS
 - FIRE ALARM CONTROL PANEL
 - FIRE ALARM INTERFACE PANEL
 - UNSWITCHED FUSE SPUR
 - JUNCTION BOX
 - FIRE ALARM SOUNDER
 - FIRE ALARM BELL
 - VISUAL WARNING DEVICE
- FIRE EXTINGUISHERS**
- WATER EXTINGUISHER
 - CARBON DIOXIDE EXTINGUISHER
 - FOAM EXTINGUISHER
 - POWDER EXTINGUISHER
 - FIRE BLANKET
- FIRE SIGNAGE**
- FIRE EXIT SIGN
 - FIRE EXIT DIRECTIONAL SIGN
 - DOUBLE SIDED FIRE EXIT SIGN
 - FIRE ACTION NOTICE
 - ILLUMINATED FIRE EXIT SIGN
- FIRE REFUGE**
- REFUGE AREA
 - REFUGE AREA WITH EVACUATION CHAIR
 - EVACUATION CHAIR
 - CALL ASSISTANCE POINT

DATE	DESCRIPTION	REV
---	--	--



Campus Services
 Pandon Building
 Camden Street
 Newcastle upon Tyne
 NE1 8ST

Campus: CITY CENTRE
 Building: NORTHUMBERLAND
 Title: FIRST FLOOR LEVEL

Scale:	Date: JULY 2019
NTS	Drawn:
	Issued:

Project No:

Drawing No:	Rev:
-------------	------



- FIRE EQUIPMENT**
- FIRE ALARM CALL POINT/BREAK GLASS
 - FIRE ALARM CONTROL PANEL
 - FIRE ALARM INTERFACE PANEL
 - ▲ UNSWITCHED FUSE SPUR
 - JUNCTION BOX
 - ▲ FIRE ALARM SOUNDER
 - ▲ FIRE ALARM BELL
 - ▲ VISUAL WARNING DEVICE
- FIRE EXTINGUISHERS**
- ▲ WATER EXTINGUISHER
 - ▲ CARBON DIOXIDE EXTINGUISHER
 - ▲ FOAM EXTINGUISHER
 - ▲ POWDER EXTINGUISHER
 - ▲ FIRE BLANKET
 - ▲ FIRE SIGNAGE
 - FIRE EXIT SIGN
 - FIRE EXIT DIRECTIONAL SIGN
 - DOUBLE SIDED FIRE EXIT SIGN
 - FIRE ACTION NOTICE
 - ILLUMINATED FIRE EXIT SIGN
- FIRE REFUGE**
- REFUGE AREA
 - REFUGE AREA WITH EVACUATION CHAIR
 - EVACUATION CHAIR
 - CALL ASSISTANCE POINT

DATE	DESCRIPTION	REV
		-



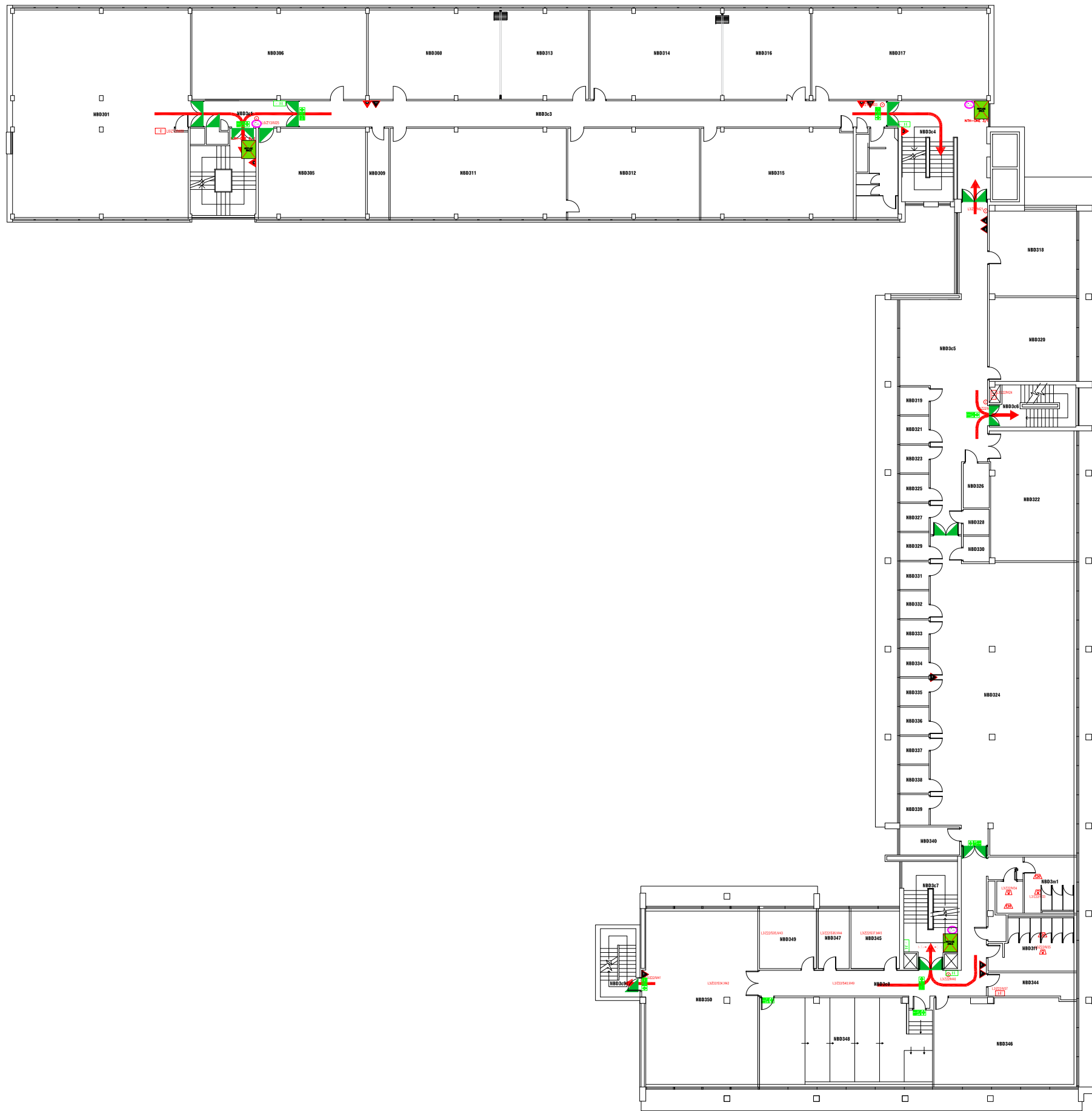
Campus Services
Pandon Building
Camden Street
Newcastle upon Tyne
NE1 8ST

Campus: CITY CENTRE
Building: NORTHUMBERLAND
Title: SECOND FLOOR LEVEL

Scale:	Date: JULY 2019
NTS	Drawn:
	Issued:

Project No:

Drawing No:	Rev:
-------------	------



- FIRE EQUIPMENT**
- FIRE ALARM CALL POINT/BREAK GLASS
 - FIRE ALARM CONTROL PANEL
 - FIRE ALARM INTERFACE PANEL
 - ▲ UNSWITCHED FUSE SPUR
 - JUNCTION BOX
 - ▲ FIRE ALARM SOUNDER
 - ▲ FIRE ALARM BELL
 - ▲ VISUAL WARNING DEVICE
- FIRE EXTINGUISHERS**
- ▲ WATER EXTINGUISHER
 - ▲ CARBON DIOXIDE EXTINGUISHER
 - ▲ FOAM EXTINGUISHER
 - ▲ POWDER EXTINGUISHER
 - ▲ FIRE BLANKET
- FIRE SIGNAGE**
- FIRE EXT SIGN
 - FIRE EXT DIRECTIONAL SIGN
 - DOUBLE SIDED FIRE EXT SIGN
 - FIRE ACTION NOTICE
 - ILLUMINATED FIRE EXT SIGN
- FIRE REFUGE**
- REFUGE AREA
 - REFUGE AREA WITH EVACUATION CHAIR
 - EVACUATION CHAIR
 - CALL ASSISTANCE POINT

DATE	DESCRIPTION	REV
---	--	--



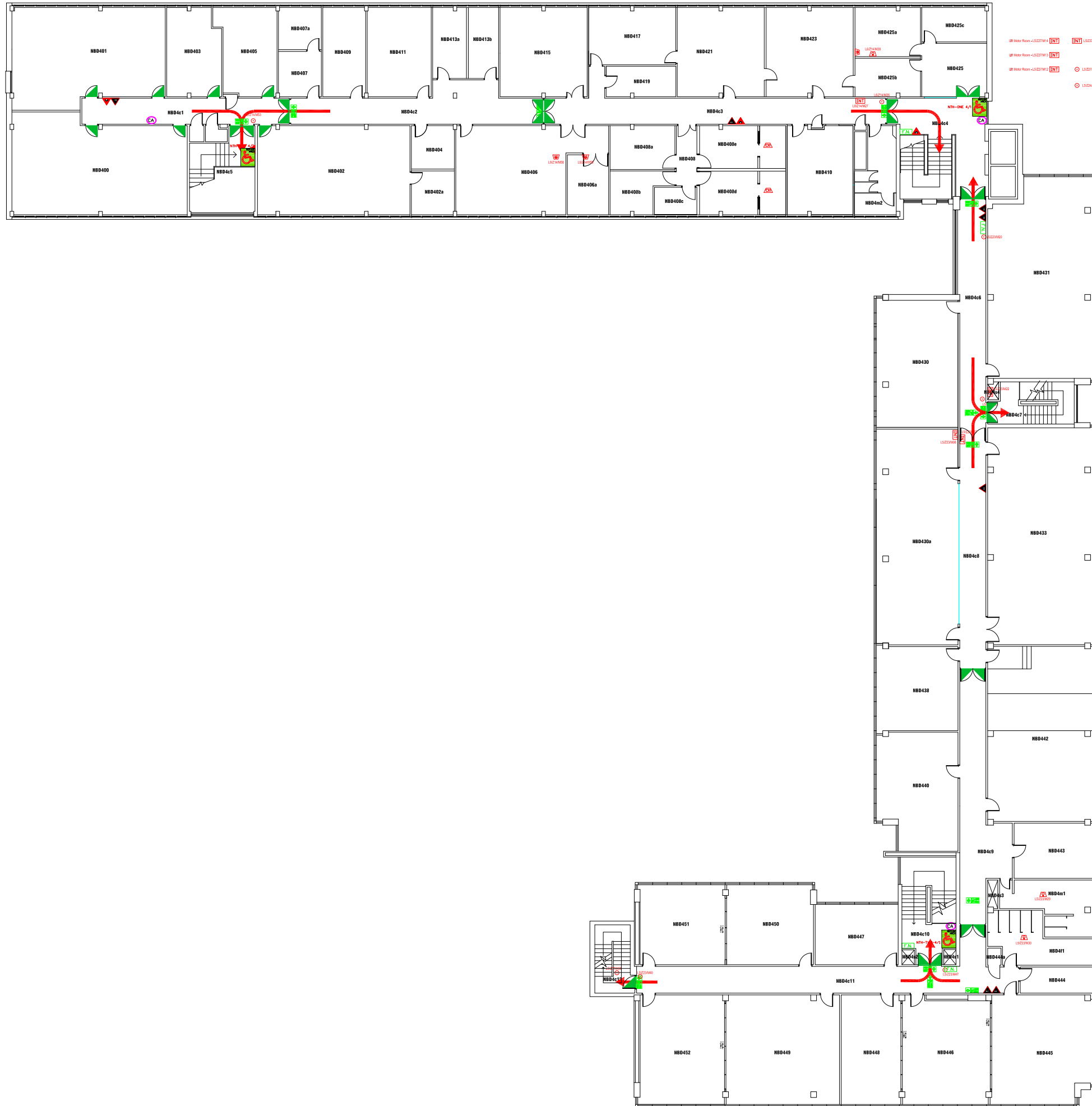
Campus Services
 Pandon Building
 Camden Street
 Newcastle upon Tyne
 NE1 8ST

Campus: CITY CENTRE
 Building: NORTHUMBERLAND
 Title: THIRD FLOOR LEVEL

Scale:	Date: JULY 2019
NTS	Drawn:
	Issued:

Project No:

Drawing No:	Rev:
-------------	------



- FIRE EQUIPMENT**
- FIRE ALARM CALL POINT/BREAK GLASS
 - FCP FIRE ALARM CONTROL PANEL
 - INTI FIRE ALARM INTERFACE PANEL
 - ▲ UNSWITCHED FUSE SPUR
 - JB JUNCTION BOX
 - SA FIRE ALARM SOUNDER
 - BA FIRE ALARM BELL
 - VD VISUAL WARNING DEVICE
- FIRE SIGNAGE**
- ESD FIRE EXIT SIGN
 - ESD+D FIRE EXIT DIRECTIONAL SIGN
 - ESD+D+D DOUBLE SIDED FIRE EXIT SIGN
 - FXN FIRE ACTION NOTICE
 - ESD+D+D+D ILLUMINATED FIRE EXIT SIGN
- FIRE EXTINGUISHERS**
- ▲ WATER EXTINGUISHER
 - ▲ CARBON DIOXIDE EXTINGUISHER
 - ▲ FOAM EXTINGUISHER
 - ▲ POWDER EXTINGUISHER
 - ▲ FIRE BLANKET
- FIRE REFUGE**
- REFUGED REFUGE AREA
 - REFUGED+EVAC REFUGE AREA WITH EVACUATION CHAIR
 - EVACUATION CHAIR
 - CALL ASSISTANCE POINT

DATE	DESCRIPTION	REV
---	---	---



Campus Services
 Pandon Building
 Camden Street
 Newcastle upon Tyne
 NE1 8ST

Campus: CITY CENTRE
 Building: NORTHUMBERLAND
 Title: FOURTH FLOOR LEVEL

Scale: NTS	Date: JULY 2019
	Drawn:
	Issued:

Project No:

Drawing No:	Rev:
-------------	------