

- FIRE EQUIPMENT**
- FIRE ALARM CALL POINT/BREAK GLASS
 - FIRE ALARM CONTROL PANEL
 - FIRE ALARM INTERFACE PANEL
 - ▲ UNSWITCHED FUSE SPUR
 - JUNCTION BOX
 - ▲ FIRE ALARM SOUNDER
 - ▲ FIRE ALARM BELL
 - ▲ VISUAL WARNING DEVICE
 - FIRE EXTINGUISHERS**
 - ▲ WATER EXTINGUISHER
 - ▲ CARBON DIOXIDE EXTINGUISHER
 - ▲ FOAM EXTINGUISHER
 - ▲ POWDER EXTINGUISHER
 - ▲ FIRE BLANKET
 - FIRE SIGNAGE**
 - FIRE EXIT SIGN
 - FIRE EXIT DIRECTIONAL SIGN
 - DOUBLE SIDED FIRE EXIT SIGN
 - FIRE ACTION NOTICE
 - ILLUMINATED FIRE EXIT SIGN

| DATE | DESCRIPTION | REV |
|------|-------------|-----|
| | | |
| | | |
| | | |
| | | |
| | | |



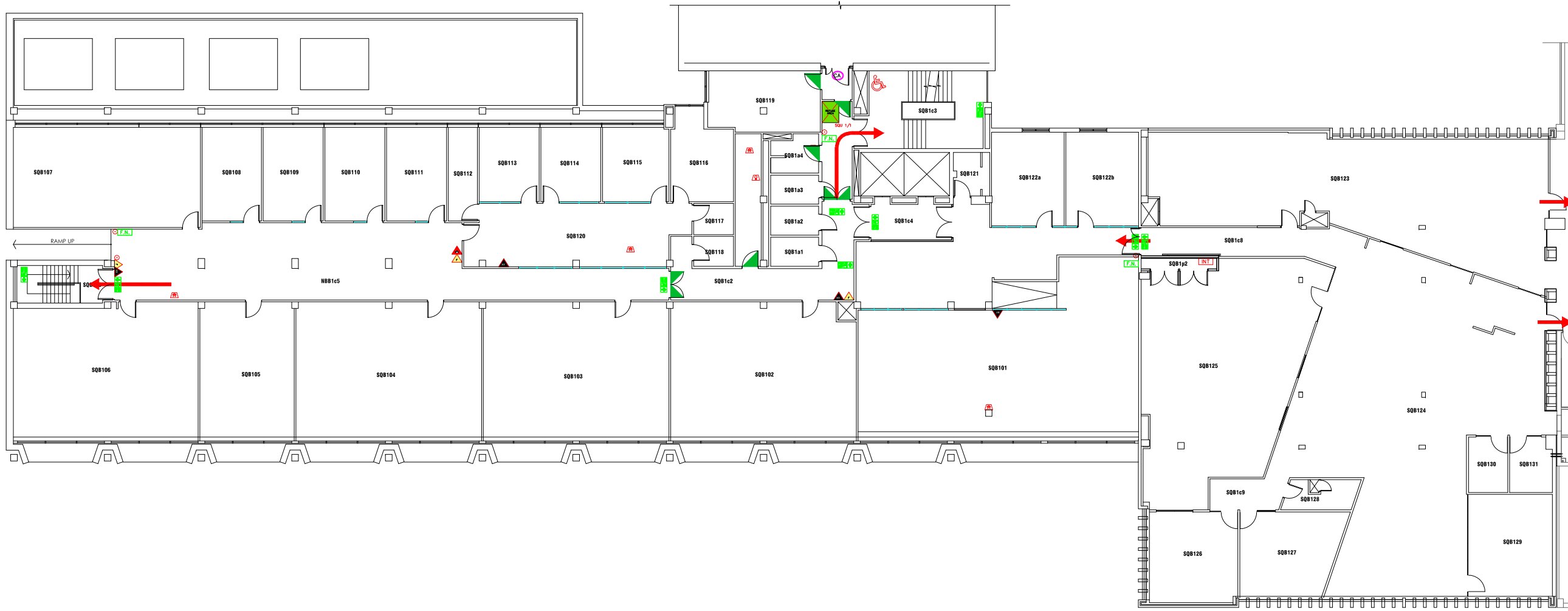
Campus Services
 Pandon Building
 Camden Street
 Newcastle upon Tyne
 NE1 8ST

Campus: CITY CENTRE
Building: SQUIRES BUILDING
Title: GROUND FLOOR LEVEL

| | |
|-------------------|----------------|
| Scale: NTS | Date: MAY 2019 |
| | Drawn: |
| | Issued: |

Project No:

| | |
|--------------------|-------------|
| Drawing No: | Rev: |
|--------------------|-------------|



- FIRE EQUIPMENT**
- FIRE ALARM CALL POINT/BREAK GLASS
 - FACP FIRE ALARM CONTROL PANEL
 - FIPI FIRE ALARM INTERFACE PANEL
 - ▲ UNSWITCHED FUSE SPUR
 - J JUNCTION BOX
 - S FIRE ALARM SOUNDER
 - B FIRE ALARM BELL
 - V VISUAL WARNING DEVICE
- FIRE EXTINGUISHERS**
- ▲ WATER EXTINGUISHER
 - ▲ CARBON DIOXIDE EXTINGUISHER
 - ▲ FOAM EXTINGUISHER
 - ▲ POWDER EXTINGUISHER
 - ▲ FIRE BLANKET
- FIRE SIGNAGE**
- EXIT FIRE EXIT SIGN
 - EXIT FIRE EXIT DIRECTIONAL SIGN
 - EXIT DOUBLE SIDED FIRE EXIT SIGN
 - FAN FIRE ACTION NOTICE
 - EXIT ILLUMINATED FIRE EXIT SIGN
- FIRE REFUGE**
- R REFUGE AREA
 - R REFUGE AREA WITH EVACUATION CHAIR
 - ♿ EVACUATION CHAIR
 - A CALL ASSISTANCE POINT

| DATE | DESCRIPTION | REV |
|------|-------------|-----|
| | | |
| | | |
| | | |



Campus Services
 Pandon Building
 Camden Street
 Newcastle upon Tyne
 NE1 8ST



















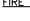



Campus: CITY CENTRE
 Building: SQUIRES BUILDING
 Title: FIRST FLOOR LEVEL

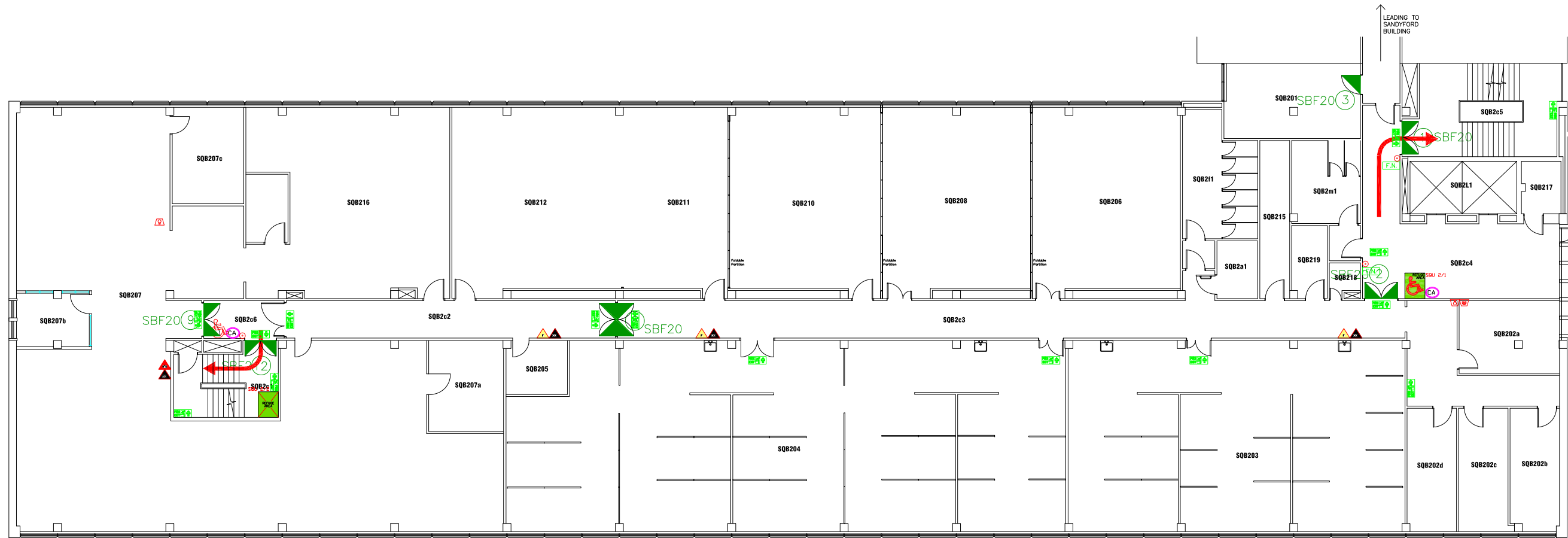
Scale: NTS
 Date: JULY 2019
 Drawn:
 Issued:

Project No:

Drawing No: Rev:

FIRE EQUIPMENT

-  FIRE ALARM CALL POINT/BREAK GLASS
-  FIRE ALARM CONTROL PANEL
-  FIRE ALARM INTERFACE PANEL
-  UNSWITCHED FUSE SPUR
-  JUNCTION BOX
-  FIRE ALARM SOUNDER
-  FIRE ALARM BELL
-  VISUAL WARNING DEVICE
- FIRE EXTINGUISHERS**
-  WATER EXTINGUISHER
-  CARBON DIOXIDE EXTINGUISHER
-  FOAM EXTINGUISHER
-  POWDER EXTINGUISHER
-  FIRE BLANKET
- FIRE SIGNAGE**
-  FIRE EXIT SIGN
-  FIRE EXIT DIRECTIONAL SIGN
-  DOUBLE SIDED FIRE EXIT SIGN
-  FIRE ACTION NOTICE
-  ILLUMINATED FIRE EXIT SIGN
- FIRE REFUGE**
-  REFUGE AREA
-  REFUGE AREA WITH EVACUATION CHAIR
-  EVACUATION CHAIR
-  CALL ASSISTANCE POINT



| DATE | DESCRIPTION | REV |
|------|-------------|-----|
| | | - |
| | | - |
| | | - |

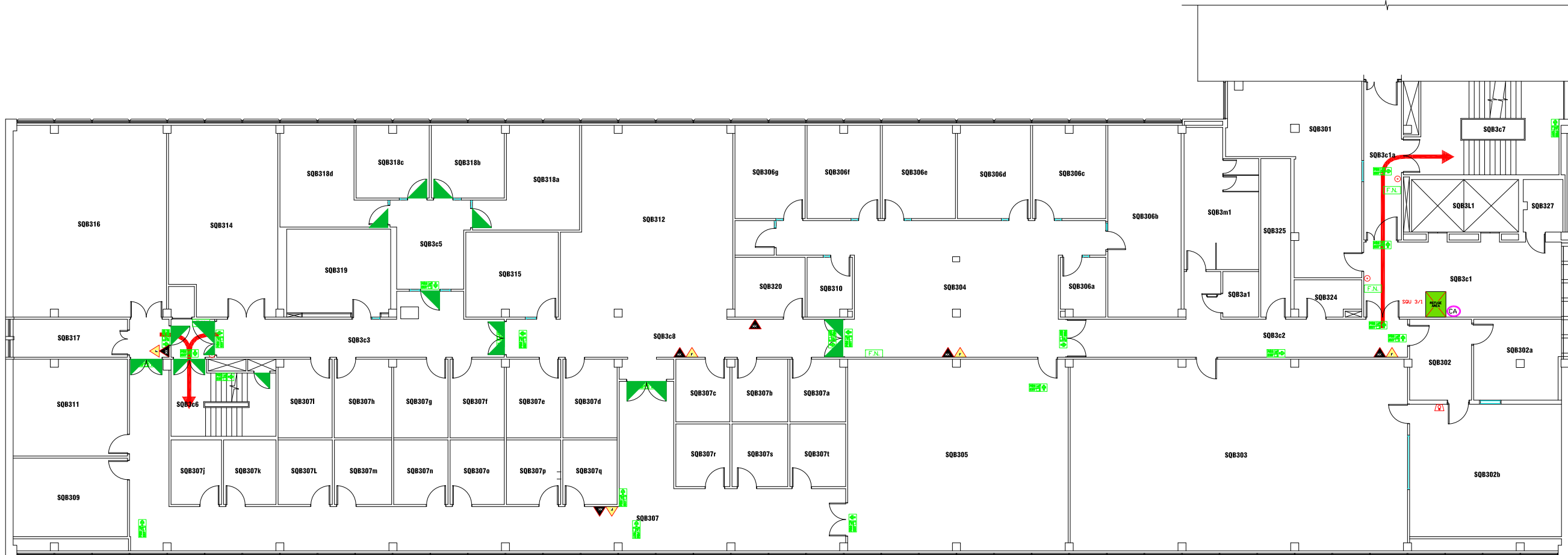


Campus Services
Pandon Building
Camden Street
Newcastle upon Tyne
NE1 8ST

Campus: CITY CENTRE
Building: SQUIRES BUILDING
Title: SECOND FLOOR LEVEL

| | |
|--------|-----------------|
| Scale: | Date: JULY 2019 |
| NTS | Drawn: |
| | Issued: |

| | |
|-------------|------|
| Project No: | |
| Drawing No: | Rev: |



- FIRE EQUIPMENT**
- FIRE ALARM CALL POINT/BREAK GLASS
 - FIRE ALARM CONTROL PANEL
 - FIRE ALARM INTERFACE PANEL
 - UNSWITCHED FUSE SPUR
 - JUNCTION BOX
 - FIRE ALARM SOUNDER
 - FIRE ALARM BELL
 - VISUAL WARNING DEVICE
- FIRE EXTINGUISHERS**
- WATER EXTINGUISHER
 - CARBON DIOXIDE EXTINGUISHER
 - FOAM EXTINGUISHER
 - POWDER EXTINGUISHER
 - FIRE BLANKET
- FIRE SIGNAGE**
- FIRE EXIT SIGN
 - FIRE EXIT DIRECTIONAL SIGN
 - DOUBLE SIDED FIRE EXIT SIGN
 - FIRE ACTION NOTICE
 - ILLUMINATED FIRE EXIT SIGN
- FIRE REFUGE**
- REFUGE AREA
 - REFUGE AREA WITH EVACUATION CHAIR
 - EVACUATION CHAIR
 - CALL ASSISTANCE POINT

| DATE | DESCRIPTION | REV |
|------|-------------|-----|
| | | - |
| | | - |
| | | - |
| | | - |



Campus Services
 Pandon Building
 Camden Street
 Newcastle upon Tyne
 NE1 8ST

Campus: CITY CENTRE
 Building: SQUIRES BUILDING
 Title: THIRD FLOOR LEVEL

| | |
|--------|-----------------|
| Scale: | Date: JULY 2019 |
| NTS | Drawn: |
| | Issued: |

Project No:

| | |
|-------------|------|
| Drawing No: | Rev: |
|-------------|------|



- FIRE EQUIPMENT**
- FIRE ALARM CALL POINT/BREAK GLASS
 - FIRE ALARM CONTROL PANEL
 - FIRE ALARM INTERFACE PANEL
 - UNSWITCHED FUSE SPUR
 - JUNCTION BOX
 - FIRE ALARM SOUNDER
 - FIRE ALARM BELL
 - VISUAL WARNING DEVICE
- FIRE EXTINGUISHERS**
- WATER EXTINGUISHER
 - CARBON DIOXIDE EXTINGUISHER
 - FOAM EXTINGUISHER
 - POWDER EXTINGUISHER
 - FIRE BLANKET
- FIRE SIGNAGE**
- FIRE EXIT SIGN
 - FIRE EXIT DIRECTIONAL SIGN
 - DOUBLE SIDED FIRE EXIT SIGN
 - FIRE ACTION NOTICE
 - ILLUMINATED FIRE EXIT SIGN
- FIRE REFUGE**
- REFUGE AREA
 - REFUGE AREA WITH EVACUATION CHAIR
 - EVACUATION CHAIR
 - CALL ASSISTANCE POINT

| DATE | DESCRIPTION | REV |
|------|-------------|-----|
| | | - |
| | | - |
| | | - |
| | | - |
| | | - |



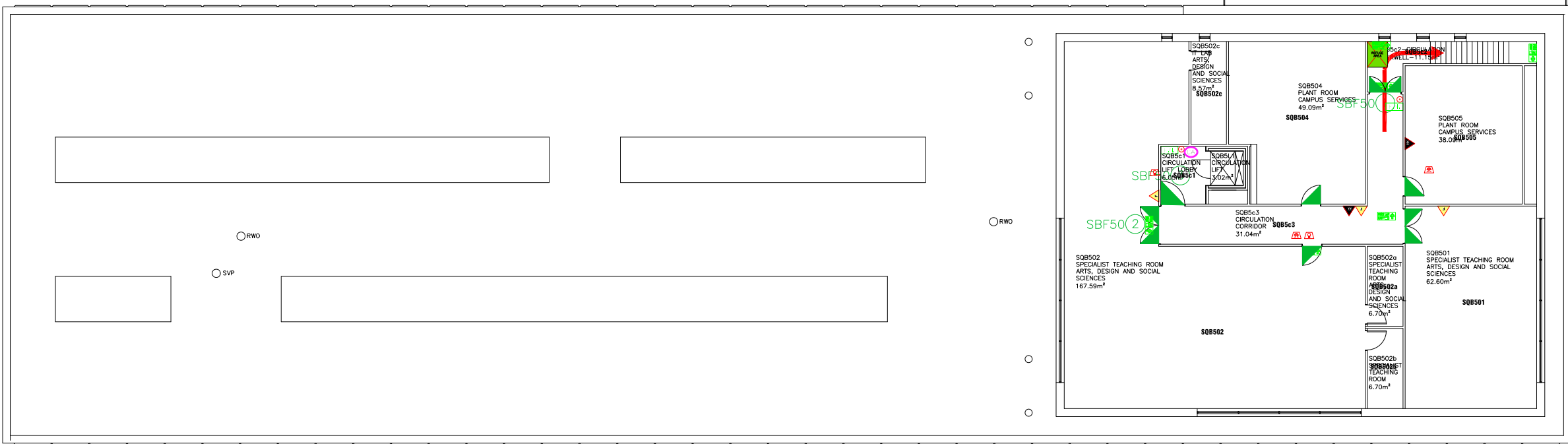
Northumbria University
NEWCASTLE

Campus Services
Pandon Building
Camden Street
Newcastle upon Tyne
NE1 8ST

Campus: CITY CENTRE
Building: SQUIRES BUILDING
Title: FOURTH FLOOR LEVEL

Scale: NTS
Date: JULY 2019
Drawn:
Issued:

Project No:
Drawing No: Rev:



SQUIRES BUILDING
FIFTH FLOOR PLAN
407.57m²

- FIRE EQUIPMENT**
- FIRE ALARM CALL POINT/BREAK GLASS
 - FIRE ALARM CONTROL PANEL
 - FIRE ALARM INTERFACE PANEL
 - UNSWITCHED FUSE SPUR
 - JUNCTION BOX
 - FIRE ALARM SOUNDER
 - FIRE ALARM BELL
 - VISUAL WARNING DEVICE
- FIRE EXTINGUISHERS**
- WATER EXTINGUISHER
 - CARBON DIOXIDE EXTINGUISHER
 - FOAM EXTINGUISHER
 - POWDER EXTINGUISHER
 - FIRE BLANKET
- FIRE SIGNAGE**
- FIRE EXIT SIGN
 - FIRE EXIT DIRECTIONAL SIGN
 - DOUBLE SIDED FIRE EXIT SIGN
 - FIRE ACTION NOTICE
 - ILLUMINATED FIRE EXIT SIGN
- FIRE REFUGE**
- REFUGE AREA
 - REFUGE AREA WITH EVACUATION CHAIR
 - EVACUATION CHAIR
 - CALL ASSISTANCE POINT

| DATE | DESCRIPTION | REV |
|------|-------------|-----|
| | | - |
| | | - |
| | | - |
| | | - |



Campus Services
Pandon Building
Camden Street
Newcastle upon Tyne
NE1 8ST

Campus: CITY CENTRE
Building: SQUIRES BUILDING
Title: FIFTH FLOOR LEVEL

| | |
|--------|-----------------|
| Scale: | Date: JULY 2019 |
| NTS | Drawn: |
| | Issued: |

Project No:

| | |
|-------------|------|
| Drawing No: | Rev: |
|-------------|------|