



- FIRE EQUIPMENT**
- FIRE ALARM CALL POINT/BREAK GLASS
 - FIRE ALARM CONTROL PANEL
 - FIRE ALARM INTERFACE PANEL
 - UNSWITCHED FUSE SPUR
 - JUNCTION BOX
 - FIRE ALARM SOUNDER
 - FIRE ALARM BELL
 - VISUAL WARNING DEVICE
- FIRE EXTINGUISHERS**
- WATER EXTINGUISHER
 - CARBON DIOXIDE EXTINGUISHER
 - FOAM EXTINGUISHER
 - POWDER EXTINGUISHER
 - FIRE BLANKET
- FIRE SIGNAGE**
- FIRE EXIT SIGN
 - FIRE EXIT DIRECTIONAL SIGN
 - DOUBLE SIDED FIRE EXIT SIGN
 - FIRE ACTION NOTICE
 - ILLUMINATED FIRE EXIT SIGN

DATE	DESCRIPTION	REV
---	---	---



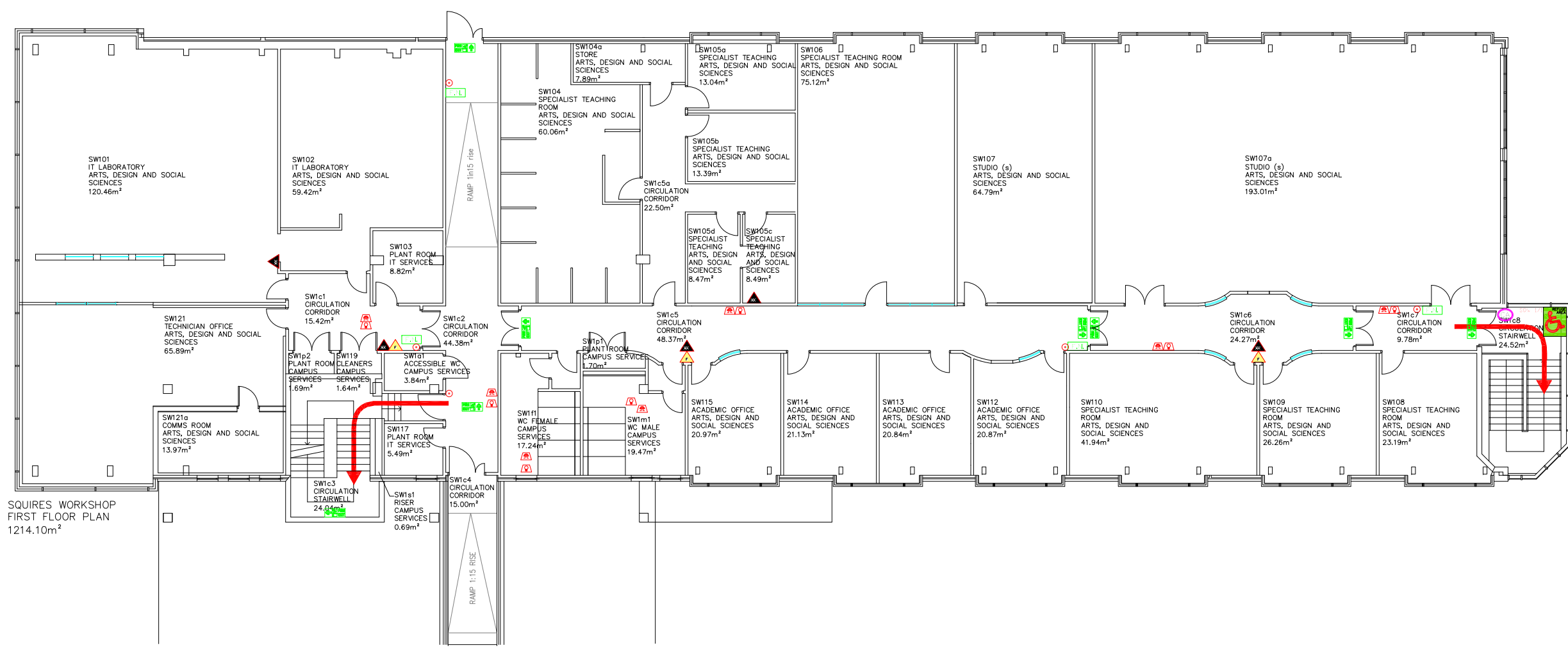
Campus Services
 Pandon Building
 Camden Street
 Newcastle upon Tyne
 NE1 8ST

Campus: CITY CENTRE
 Building: SQUIRES WORKSHOP
 Title: GROUND FLOOR LEVEL

Scale:	Date: FEB 2018
NTS	Drawn:
	Issued:

Project No:

Drawing No:	Rev:
-------------	------



SQUIRES WORKSHOP
FIRST FLOOR PLAN
1214.10m²

- FIRE EQUIPMENT**
- FIRE ALARM CALL POINT/BREAK GLASS
 - FIRE ALARM CONTROL PANEL
 - FIRE ALARM INTERFACE PANEL
 - UNSWITCHED FUSE SPUR
 - JUNCTION BOX
 - FIRE ALARM SOUNDER
 - FIRE ALARM BELL
 - VISUAL WARNING DEVICE
- FIRE EXTINGUISHERS**
- WATER EXTINGUISHER
 - CARBON DIOXIDE EXTINGUISHER
 - FOAM EXTINGUISHER
 - POWDER EXTINGUISHER
 - FIRE BLANKET
- FIRE SIGNAGE**
- FIRE EXIT SIGN
 - FIRE EXIT DIRECTIONAL SIGN
 - DOUBLE SIDED FIRE EXIT SIGN
 - FIRE ACTION NOTICE
 - ILLUMINATED FIRE EXIT SIGN
- FIRE REFUGE**
- REFUGE AREA
 - REFUGE AREA WITH EVACUATION CHAIR
 - EVACUATION CHAIR
 - CALL ASSISTANCE POINT

DATE	DESCRIPTION	REV
29.03.18	Room Alterations	-



Campus Services
Pandon Building
Camden Street
Newcastle upon Tyne
NE1 8ST

Campus: CITY CENTRE
Building: SQUIRES WORKSHOP
Title: FIRST FLOOR LEVEL

Scale:	Date: SEPT 2018
NTS	Drawn:
	Issued:

Project No:

Drawing No:	Rev:
-------------	------