

- FIRE EQUIPMENT**
- FIRE ALARM CALL POINT/BREAK GLASS
 - EMERGENCY DOOR RELEASE
- FIRE EXTINGUISHERS**
- ▲ WATER EXTINGUISHER
 - ▲ CARBON DIOXIDE EXTINGUISHER
 - ▲ FOAM EXTINGUISHER
 - ▲ POWDER EXTINGUISHER
 - ▲ FIRE BLANKET
- FIRE SIGNAGE**
- FIRE EXIT SIGN
 - FIRE EXIT DIRECTIONAL SIGN
 - DOUBLE SIDED FIRE EXIT SIGN
 - FIRE ACTION NOTICE
 - ILLUMINATED FIRE EXIT SIGN
- FIRE REFUGE**
- REFUGE AREA
 - REFUGE AREA WITH EVACUATION CHAIR
 - EVACUATION CHAIR
 - CALL ASSISTANCE POINT

Northumbria University
NEWCASTLE

Campus Services
Parrison Building
Candler Street
Newcastle upon Tyne
NE1 8ST

Campus: CITY CENTRE
Building: SUTHERLAND BUILDING
Title: LOWER GROUND FLOOR

Scale: 1:125@A1	Date: JAN 2019
Project No:	Drawn: Issued:
Drawing No:	Rev:



- FIRE EQUIPMENT**
- FIRE ALARM CALL POINT/BREAK GLASS
 - FIRE ALARM CONTROL PANEL
 - EMERGENCY DOOR RELEASE
- FIRE SIGNAGE**
- FIRE EXIT SIGN
 - FIRE EXIT DIRECTIONAL SIGN
 - DOUBLE SIDED FIRE EXIT SIGN
 - FIRE ACTION NOTICE
 - ILLUMINATED FIRE EXIT SIGN
- FIRE REFUGE**
- REFUGE AREA
 - REFUGE AREA WITH EVACUATION CHAIR
 - EVACUATION CHAIR
 - CALL ASSISTANCE POINT

DATE	DESCRIPTION	REV
---	---	---



Campus Services
 Pandon Building
 Camden Street
 Newcastle upon Tyne
 NE1 8ST

Campus: CITY CENTRE
 Building: SUTHERLAND BUILDING
 Title: UPPER GROUND FLOOR

Scale:	Date: APRIL 2019
NTS	Drawn:
	Issued:

Project No:

Drawing No:	Rev:
-------------	------



- FIRE EQUIPMENT**
- FIRE ALARM CALL POINT/BREAK GLASS
 - FIRE ALARM CONTROL PANEL
- FIRE EXTINGUISHERS**
- WATER EXTINGUISHER
 - CARBON DIOXIDE EXTINGUISHER
 - FOAM EXTINGUISHER
 - POWDER EXTINGUISHER
 - FIRE BLANKET
- FIRE SIGNAGE**
- FIRE EXIT SIGN
 - FIRE EXIT DIRECTIONAL SIGN
 - DOUBLE SIDED FIRE EXIT SIGN
 - FIRE ACTION NOTICE
 - ILLUMINATED FIRE EXIT SIGN
- FIRE REFUGE**
- REFUGE AREA
 - REFUGE AREA WITH EVACUATION CHAIR
 - EVACUATION CHAIR
 - CALL ASSISTANCE POINT

DATE	DESCRIPTION	REV
---	--	--



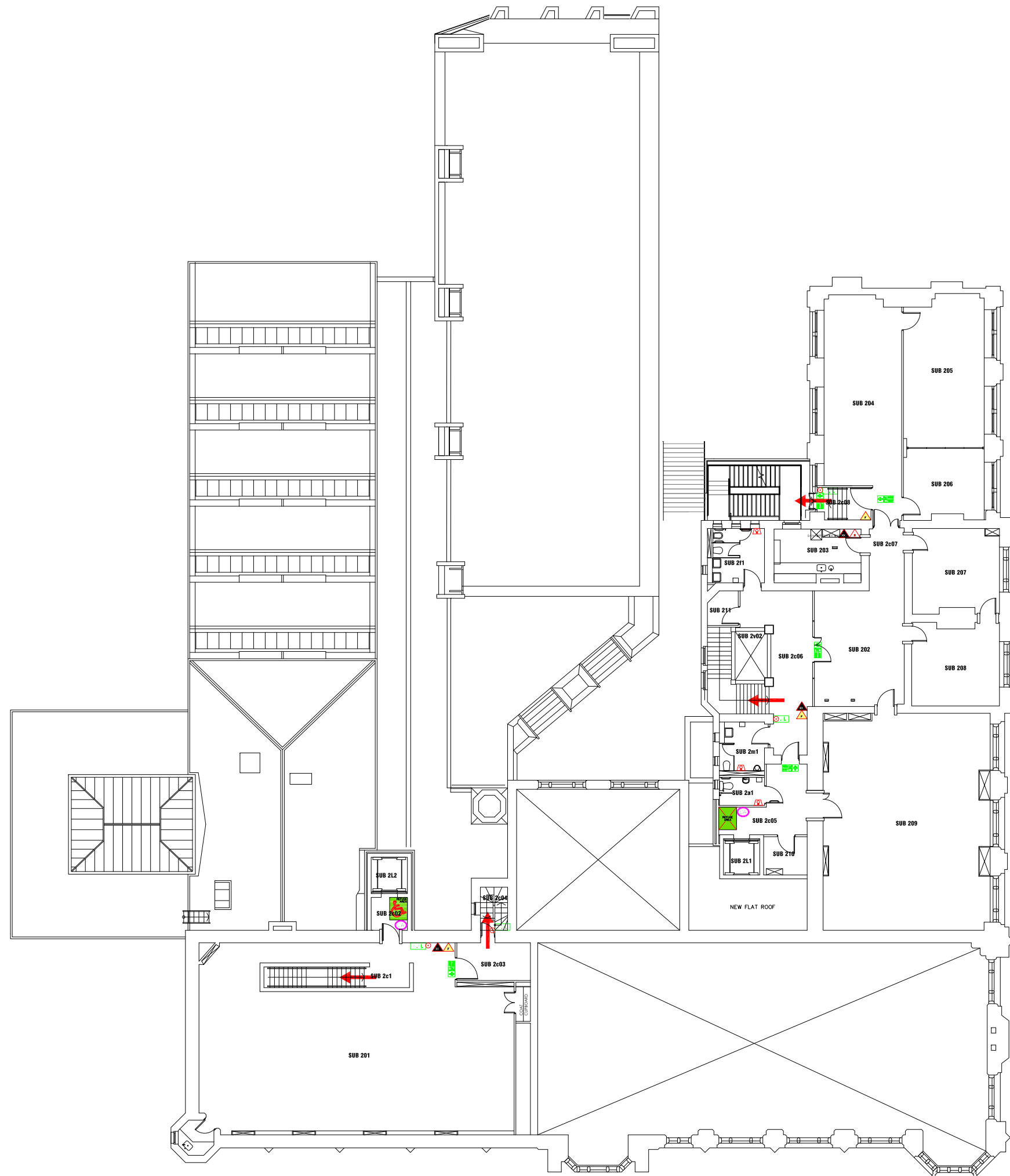
Campus Services
 Pandon Building
 Camden Street
 Newcastle upon Tyne
 NE1 8ST

Campus: CITY CENTRE
 Building: SUTHERLAND BUILDING
 Title: FIRST FLOOR LEVEL

Scale:	Date: APRIL 2019
NTS	Drawn:
	Issued:

Project No:

Drawing No:	Rev:
-------------	------



- FIRE EQUIPMENT**
- FIRE ALARM CALL POINT/BREAK GLASS
 - FIRE ALARM CONTROL PANEL
 - VISUAL WARNING DEVICE
- FIRE EXTINGUISHERS**
- WATER EXTINGUISHER
 - CARBON DIOXIDE EXTINGUISHER
 - FOAM EXTINGUISHER
 - POWDER EXTINGUISHER
 - FIRE BLANKET
- FIRE SIGNAGE**
- FIRE EXIT SIGN
 - FIRE EXIT DIRECTIONAL SIGN
 - DOUBLE SIDED FIRE EXIT SIGN
 - FIRE ACTION NOTICE
 - ILLUMINATED FIRE EXIT SIGN
- FIRE REFUGE**
- REFUGE AREA
 - REFUGE AREA WITH EVACUATION CHAIR
 - EVACUATION CHAIR
 - CALL ASSISTANCE POINT

DATE	DESCRIPTION	REV
---	--	--



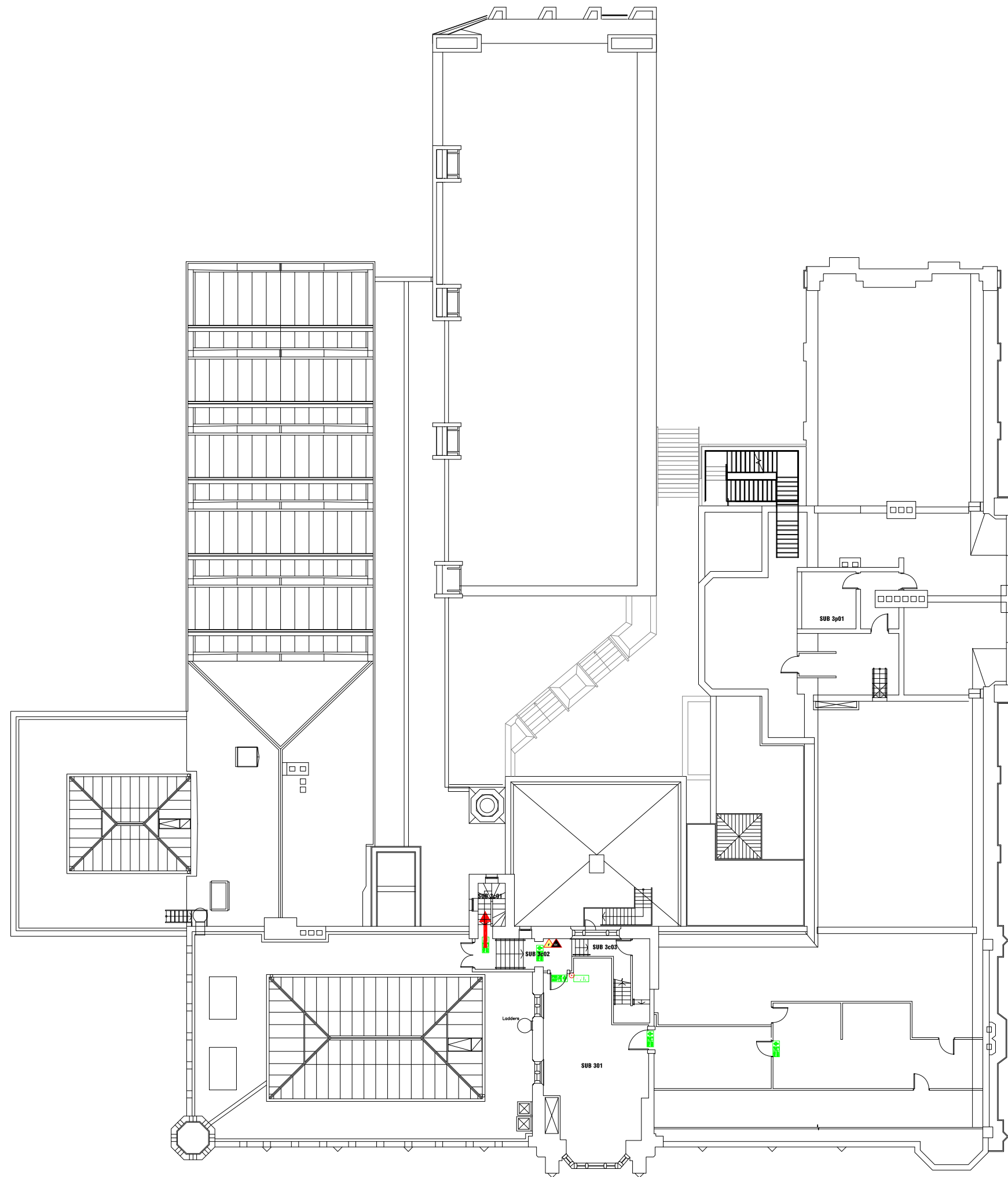
Campus Services
 Pandon Building
 Camden Street
 Newcastle upon Tyne
 NE1 8ST






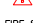





Campus: CITY CENTRE
 Building: SUTHERLAND BUILDING
 Title: SECOND FLOOR LEVEL

Scale:	Date: APRIL 2019
NTS	Drawn:
	Issued:

Project No:

Drawing No:	Rev:
-------------	------



- FIRE EQUIPMENT**
-  FIRE ALARM CALL POINT/BREAK GLASS
 - FIRE EXTINGUISHERS**
 -  WATER EXTINGUISHER
 -  CARBON DIOXIDE EXTINGUISHER
 -  FOAM EXTINGUISHER
 -  POWDER EXTINGUISHER
 -  FIRE BLANKET
 - FIRE SIGNAGE**
 -  FIRE EXIT SIGN
 -  FIRE EXIT DIRECTIONAL SIGN
 -  DOUBLE SIDED FIRE EXIT SIGN
 -  FIRE ACTION NOTICE
 -  ILLUMINATED FIRE EXIT SIGN

DATE	DESCRIPTION	REV
---	--	--



Northumbria University
NEWCASTLE

Campus Services
Pandon Building
Camden Street
Newcastle upon Tyne
NE1 8ST

Campus: CITY CENTRE
Building: SUTHERLAND BUILDING
Title: THIRD FLOOR LEVEL

Scale:	Date: APRIL 2019
NTS	Drawn:
	Issued:

Project No:

Drawing No: Rev: