

# Venues

at Northumbria



**Venues at Northumbria**

# DISCOVER MORE

**Summer School Residentials**

2023 / 2024

**#MakItHappen**

[northumbria.ac.uk/venues](https://northumbria.ac.uk/venues)

# Venues

at Northumbria

**MAKE IT HAPPEN**

## Your Summer School at Northumbria

Northumbria University is a modern and innovative institution that is committed to providing students with an exceptional educational experience.

With state-of-the-art facilities, world-class facilities, and diverse student-centred spaces, Northumbria University provides a stimulating and supportive learning environment for your next Summer School.



**#MakeItHappen**

[northumbria.ac.uk/venues](http://northumbria.ac.uk/venues)

# Venues

at Northumbria

**WHAT'S ON OFFER?**

## Inclusive Packages

Looking for room hire, catering and accommodation all in one price? Let us know and we'll build your 24hr rate to fit your budget. Contact us today for your bespoke quote.



## Dedicated Team

Every Summer School group will have a dedicated event manager to ensure your event runs smoothly. The team doesn't end there though, with in-house catering, facilities and tech teams, we've got a great network to create a successful Summer School.

**#MakeItHappen**

[northumbria.ac.uk/venues](http://northumbria.ac.uk/venues)

# SUMMER SCHOOL

Our Summer School package is customisable to fit your needs, dietary requirements and schedule.

Our events team and a chef will be on hand to discuss your best menu options, dining arrangements and dietary concerns during the lead up to your stay at Northumbria university

## BREAKFAST

### EXAMPLE BREAKFAST MENU

A selection of breakfast cereals

Morning Bakery Selection - a selection of croissants, pain au chocolate & mini-danish pastries

Assorted chilled yoghurts

5 item cooked breakfast - bacon, sausage, hash browns, beans and scrambled egg.

*Selection of fruit, squash, tea, coffee and water*

## LUNCH

### EXAMPLE LUNCH MENU

Cajun chicken or mixed bean burrito served with mixed salad and corn slaw

*Selection of fruit, squash, tea, coffee and water*

## EVENING MEAL

### EXAMPLE EVENING MEAL MENU

Lebanese chickpea and aubergine stew/falafel, houmous and mint yoghurt served with tabbouleh, pickled red cabbage and spiced fries

Fresh cream profiteroles with toffee sauce, ice cream or fresh fruit

*Salad bar, squash, tea, coffee and water*

# Venues

at Northumbria

## ACCOMMODATION

We have a wide range of accommodation available, perfect for delegates of all ages. Whether you're looking for contained, on-site accommodation for U18s or more luxurious en-suite cluster flats with views across Newcastle, we've got the perfect place for your delegates to get a home away from home.



# Venues

at Northumbria

**NEW BRIDGE STREET**

## Summer Accommodation

New Bridge Street Student Accommodation is located within a two-minute walk of the Universities Business and Law School and five-minute walk into Newcastle City Centre.

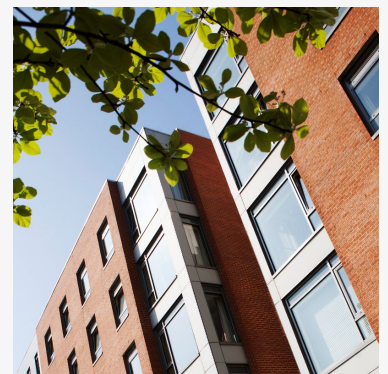
Each flat in New Bridge Street has between four to seven en-suite bedrooms with each flat sharing an open plan kitchen/living area - Please be aware that although your guests are welcome to use this area, we do not supply any cooking/eating utensils.

All rooms in New Bridge Street accommodation have double beds designed for single occupancy, although double use can be agreed by prior agreement.

Organisers can allocate rooms based on their own preferences, whether this be mixed or single gender, however they will need to share a copy of their risk assessment with ourselves letting us know where responsible adults are going to be located.

New Bridge Street is typically staffed between 8.30am until 5.30pm. After 5.30pm, our security team will be on call 24/7 for any emergencies.

All of your guests would have access to superfast Wi-Fi throughout the building. They can also access our common room which has a table tennis and pool.



# Venues

at Northumbria



**#MakeItHappen**

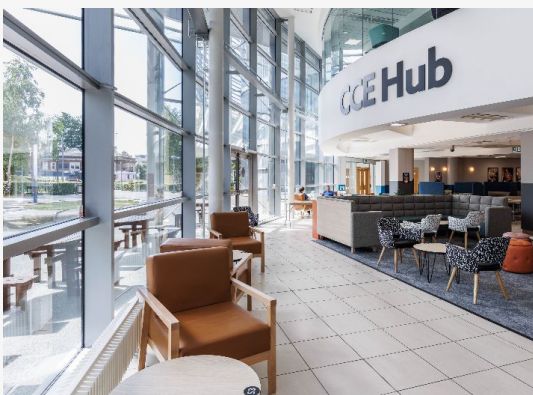
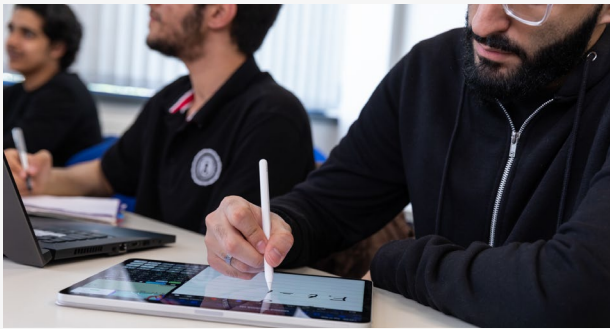
[northumbria.ac.uk/venues](http://northumbria.ac.uk/venues)

# Venues

at Northumbria

**INSPIRING SPACES**

Our state-of-the-art spaces, designed specifically with education, creativity and student engagement in mind will offer your delegates the best environment to explore and develop.



**#MakeItHappen**

[northumbria.ac.uk/venues](http://northumbria.ac.uk/venues)

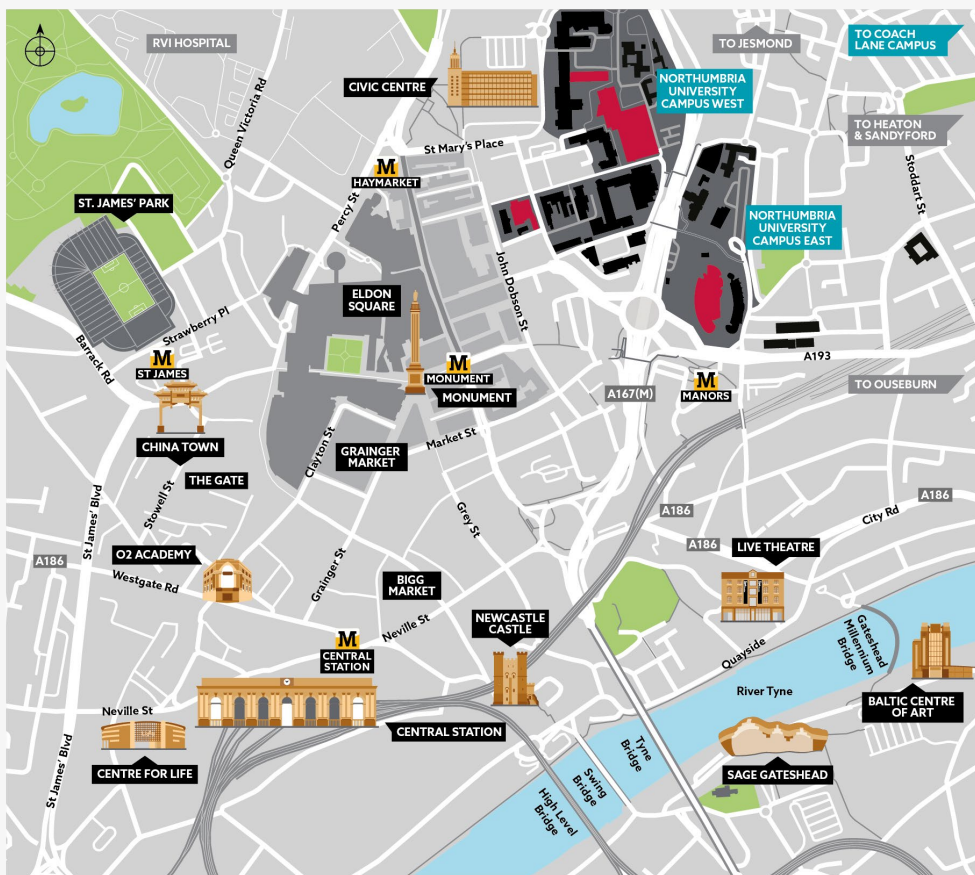


# Venues

at Northumbria

## LOCATION

Located just minutes from Newcastle's vibrant City Centre, booking your summer school with doesn't limit you to campus, explore the culture, architecture and landmarks the city by foot, electric scooter or our fantastic transport links.

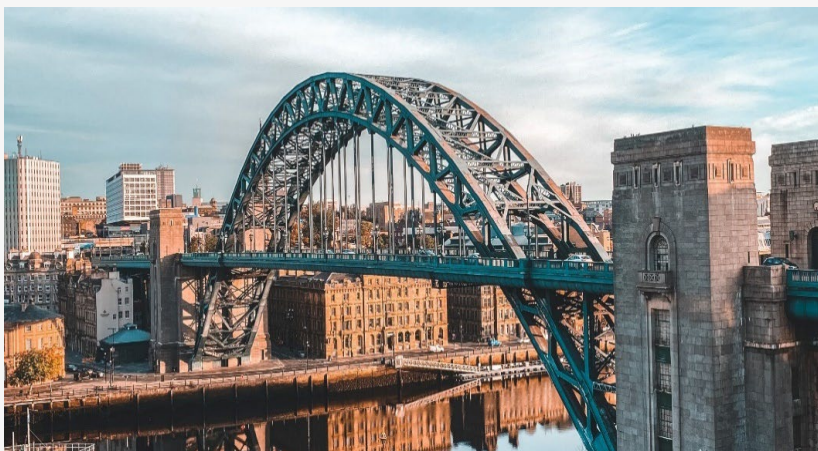
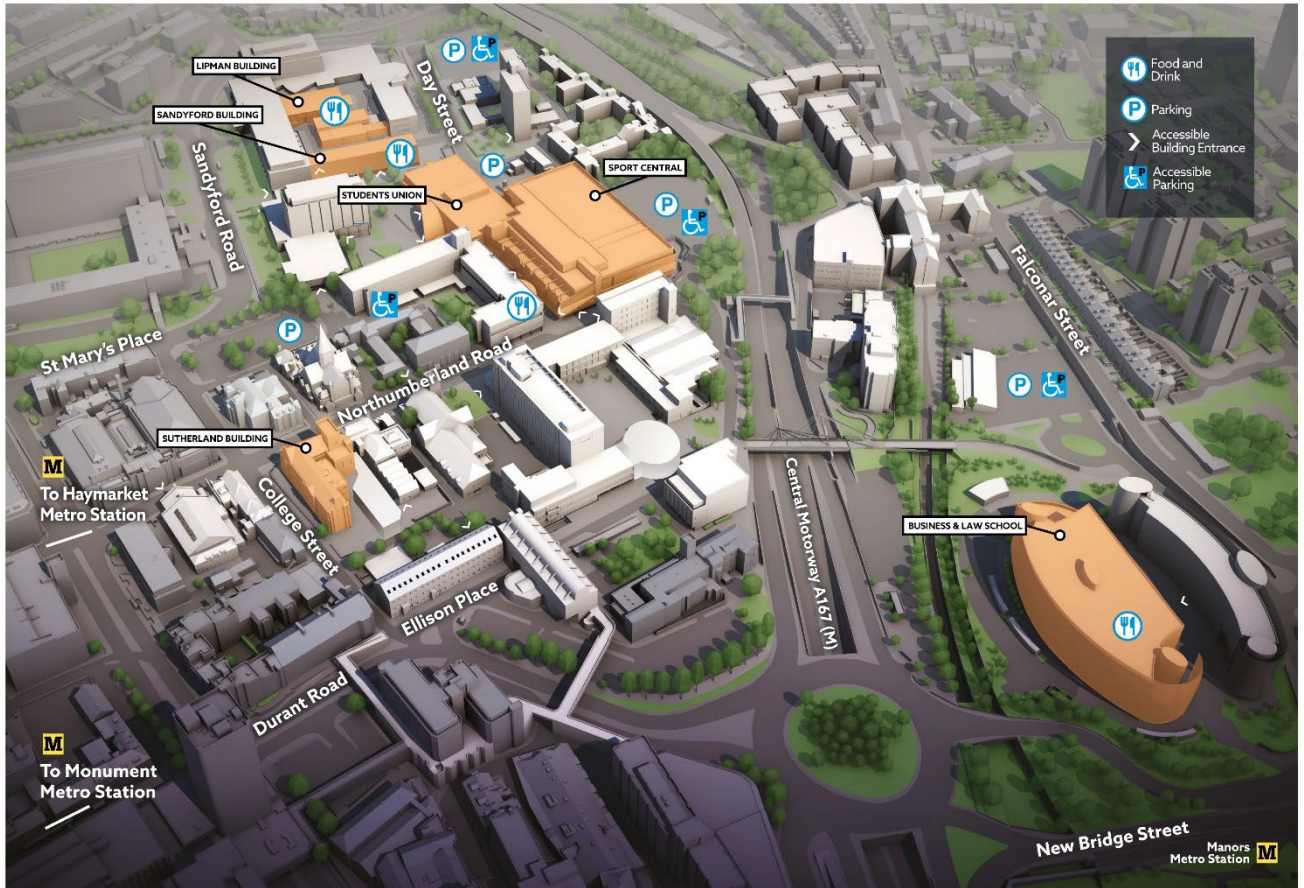


We've got great connections with businesses and organisation throughout the region to help build the best experience for your attendees.

# Venues

at Northumbria

## CAMPUS MAP



Our City Campus is a 5-to-10-minute walk from Northumberland Street in Newcastle City Centre.

To find out more, about Newcastle upon Tyne, visit: [nuworld.northumbria.ac.uk/nuworld/live/city/city-wws/city-360s/](http://nuworld.northumbria.ac.uk/nuworld/live/city/city-wws/city-360s/)

#MakeItHappen

[northumbria.ac.uk/venues](http://northumbria.ac.uk/venues)

# Venues

at Northumbria

## SPORT FACILITIES

Get active and bring your group together with access to our state-of-the-art sport facilities, located in the centre of City Campus. Whether you're looking to hire indoor courts, outdoor fields or a private session in the 25m pool, Sport Central has got it covered!



Why not speak with our team to incorporate a team building yoga class or water aerobics to give your summer school that extra edge.

**#MakeItHappen**

[northumbria.ac.uk/venues](http://northumbria.ac.uk/venues)

# Venues

at Northumbria

## LIPMAN BUILDING

Lipman Building offers a brilliant array of small flat classrooms teamed with a 170-person lecture theatre and equal capacity catering hub. On the lower ground floor, we have number of music/theatre spaces and additional teaching spaces.



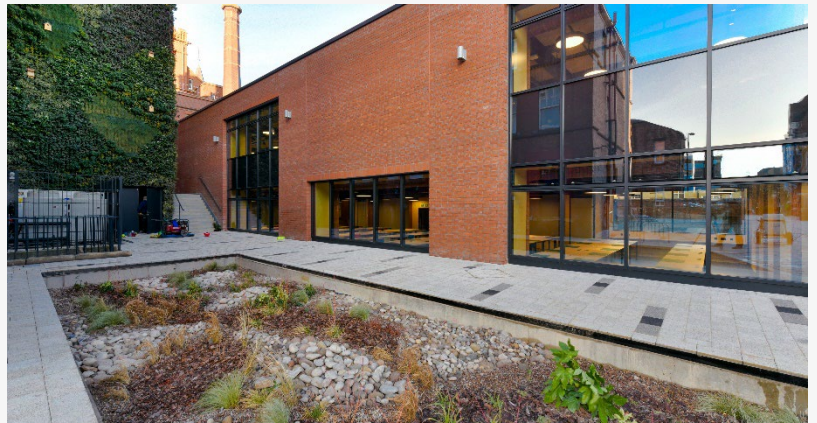
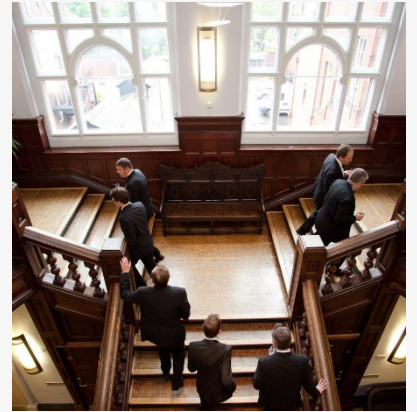
# Venues

at Northumbria

## SUTHERLAND BUILDING

Sutherland Building boasts impressive modern-meets-traditional architecture, that is both sleek and stylish.

The grand, period staircase leads to The Great hall on the first floor, boasting a 120-capacity space with excellent natural light. Accompanied with a 20-capacity board room, this a great space for a company away day, formal dinner or conference.

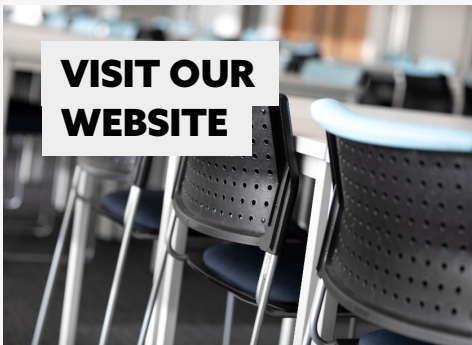


# Venues

at Northumbria

## CITY CAMPUS EAST

Our £100 million, award-winning City Campus East, offers purpose-built and versatile spaces for conferences, talks, lectures and seminars hosting up to 400 people, with sizable exhibition and catering hubs. An abundance of flat teaching spaces vary in size, offering more intimate settings for smaller group work.



### KEY FACTS

- ✓ Plenary space 400 capacity, tiered lecture theatre
- ✓ Tiered lecture theatre of 250 and 200 capacity
- ✓ Harvard lecture theatre of 60 and 100 capacity
- ✓ Large exhibition space and various breakout rooms
- ✓ 7-minute walk from Newcastle City centre
- ✓ 5-minute walk to Manors Metro



"It was a pleasure to be able to use your excellent facilities"  
*Andy Holohan, Head of Marketing – Europe, Blackboard*

#MakeItHappen

[northumbria.ac.uk/venues](http://northumbria.ac.uk/venues)

# Venues

at Northumbria

## COACH LANE CAMPUS

Coach Lane Campus, located just 15-minute drive from Newcastle City Centre hosts our Nursing, Physio and Police courses. Whilst boasting a number of great teaching spaces, Coach Lane Campus also offer great sport facilities including Grass and 3G football/rugby pitches and a sports hall.



# Venues

at Northumbria

**CONTACT DETAILS**

Venues at Northumbria, Northumbria University  
[venues@northumbria.ac.uk](mailto:venues@northumbria.ac.uk)



Venues at Northumbria



venuesnorthumbria



VenuesN



Venues at Northumbria

**#MakeltHappen**

[northumbria.ac.uk/venues](http://northumbria.ac.uk/venues)