

RESPONSIBLE VISITOR CHARTER

We take pride in pushing our events to be as eco-conscious as possible, so when visiting campus, we ask you to take into consideration the following to help us promote 'green' behaviours on campus:

Energy Consumption

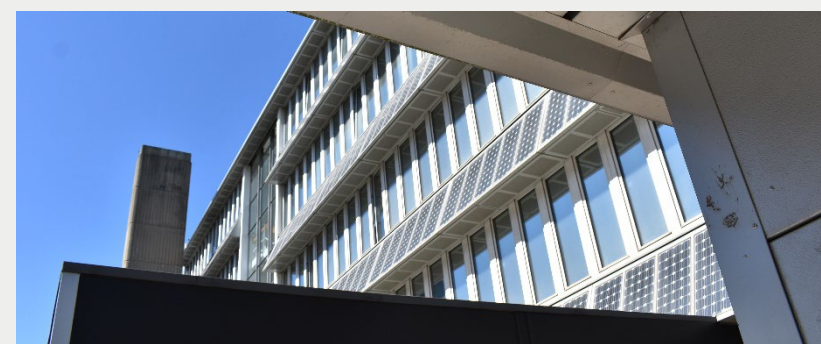
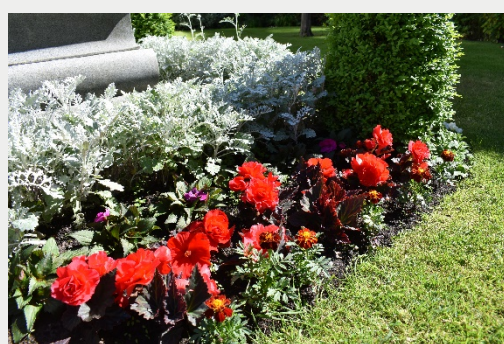
Here at Northumbria we are always striving to reduce our energy consumption, from green supplies to renewable energy on campus we are a first-class university and the top North East University for sustainability (People & Planet, 2021), so we'd really appreciate if you could ensure lights and IT equipment is turned off when not in use.

Biodiversity & Wellbeing

You might notice some beautiful green spaces on campus, we are working hard to improve the biodiversity on campus and create calming and tranquil spaces for staff, students and visitors to enjoy. We've had some great successes with urban pollinators, the Ellison Allotment and winning our Hedgehog Friendly Campus Silver certification!

Water Conservation

Water use has reduced by over 32% since 2014/15, here on campus, saving 72 million litres of water per year, equivalent to 900,000 baths, or the annual water use of 550 homes. So please make sure taps and water fountains are off when you've finished using them.



Waste

We have a zero non-hazardous waste to landfill policy and dispose of waste under the waste hierarchy. So when you're on campus please take note of the labelled bins and dispose of your waste correctly. We also hope to collaborate with companies like Event Cycle to ensure left event staging and equipment can be reused or recycled by social enterprises and charities.

Sustainable Transport

We encourage visitors to make the most of Newcastle's great local and national transport links, with travel from London in under 3 hours and Edinburgh in 1.5 hours get to North East has never been easier. We also offer visitors access to our free EV charging points on campus so those who wish to drive electric needn't worry!

Supporting Local Businesses

We want our campus visitors to make the most of their visit to NewcastleGateshead, so for more information on the brilliant attraction around the region, why not check out our blog! We also connect and collaborate with local businesses such as Doddingtons' Ice Cream and Tyne Bank Brewery, so look out for their produce across campus.

Covid-19

With ever-changing guidelines and restrictions, we make sure that the information you receive is up-to-date, so always check our website and take notice of the signage on campus to stay safe.

