

Panopto: Downloading Panopto for Home Use



Northumbria
University
NEWCASTLE

This guide is designed to inform you of how to download Panopto on your personal PC. Panopto recorder is pre-installed on university classroom PC's.

Important: Before you can use the Panopto recorder, you must login to your module and add yourself to Panopto.

Click on **View reading lists & institutional tools** then click on **Panopto – Add yourself to Panopto**.



Reading List & Tools

[View reading list & institution tools](#)



Panopto - Add Yourself to Panopto

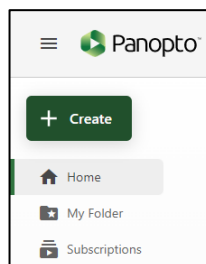
Link Panopto to Your Module

Downloading the software

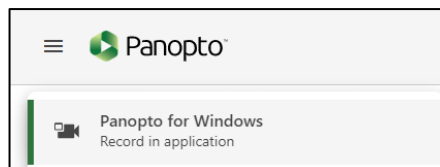
Navigate to <https://northumbria.ac.uk/panopto> - clicking the **eLP Live** button to gain access; if you are not already signed into the Blackboard eLearning Portal, you will be prompted to enter your Northumbria ID and password.

You will be directed to the Panopto portal Home page:

- 1 From the top-left hand corner of the screen, click **Create**.



- 2 Select **Panopto for Windows** from the drop down list. The Download & Record window appears.

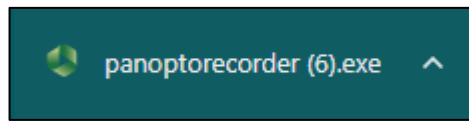
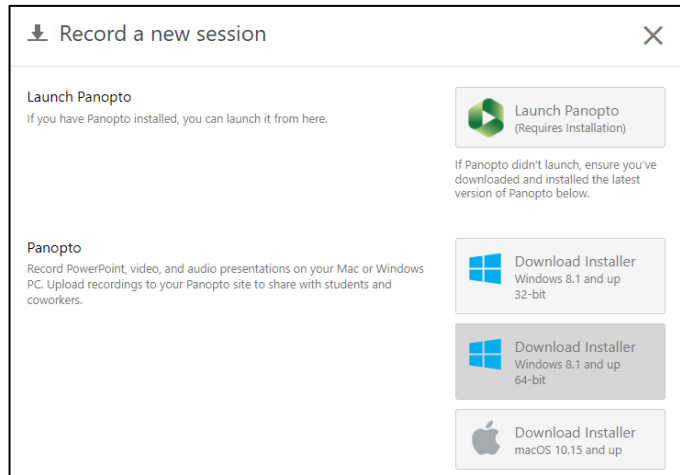


Panopto presents you with the option to Download Panopto.

Click the required **Download Installer** button for your system.

The installer will be downloaded in to your downloaded files. To begin the install click the downloaded **.exe file**

Note: Panopto recorder is available for PC (Windows) and Apple Mac computers. This guide details the process of installing on a Windows PC.

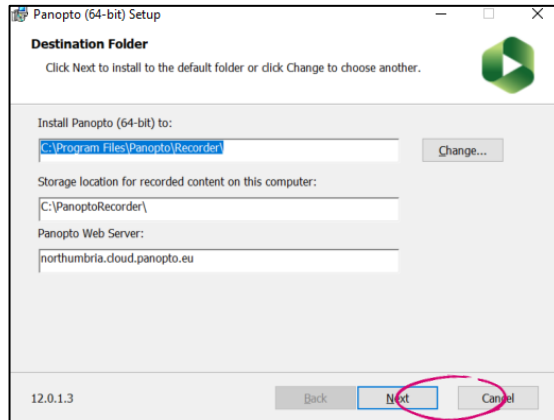


Installing the software

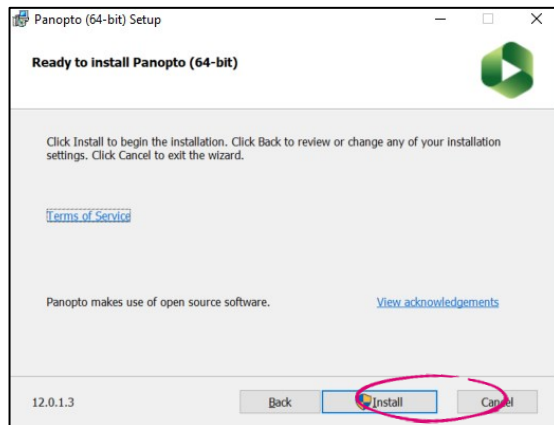
- 3 You will be presented with a setup window:

If required, you can change the install and storage locations, or leave them as default.

To continue, click **Next**

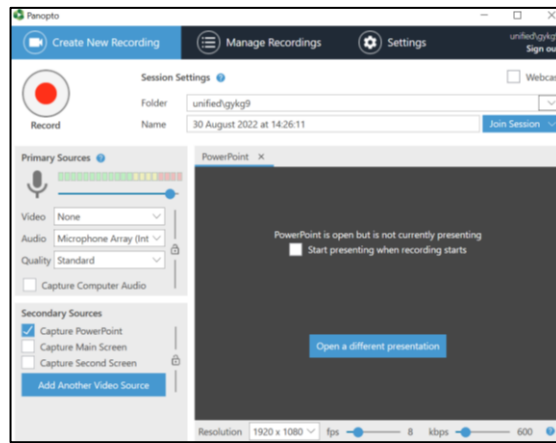


- 4 You are prompted to accept the Terms of Service. If you agree, click **Install**



- 5 Once the installation is complete, Panopto recorder will open. If prompted to sign in, select the option for **eLP Live**. Sign in with your university credentials.

Panopto is now installed on your own computer and can be used in the usual manner. You will have access to the same folders as when you are on campus.



24
HOURS

IT SUPPORT – AVAILABLE
24 HOURS, 7 DAYS A WEEK

Online northumbria.ac.uk/StudentIT

Chat northumbria.ac.uk/itchat